



**Structure ID: 12-54245 3**

**P1 HWSFBIO30**

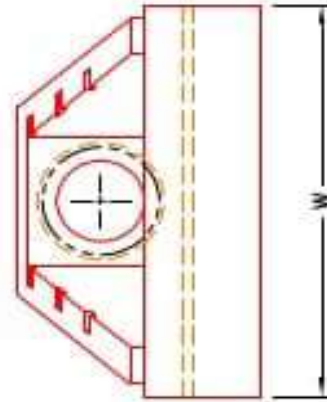
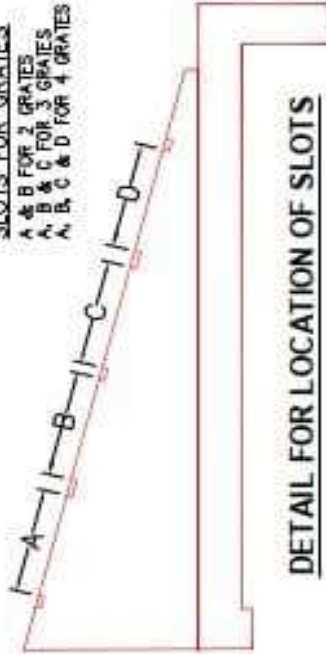
**30" - SLOPED & FLARED BOX I/O F/F**

**NOTES:**

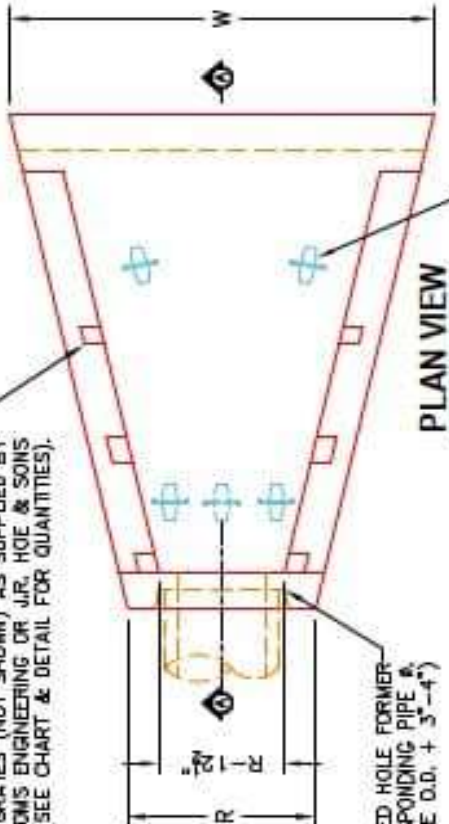
1. CONCRETE: KYTC APPROVED.
2. REINFORCING: #5 BAR @ 12" C/C E.W.-GRADE 60, (WITH 2" CONCRETE COVER MINIMUM)
3. REINFORCING BARS TO BE TACK WELDED OR TIED.
4. PIPE AND LIFTING ANCHOR POCKETS TO BE GROUTED WITH KYTC APPROVED NON-SHRINK GROUT.
5. DRAWING TO BE USED IN CONJUNCTION WITH KYTC STD. DRAWINGS ROB-105-06 & ROB-106-05 AND THE STANDARD SPECIFICATIONS FOR ROAD AND BRIDGE CONSTRUCTION.
6. 2" CHAMFER ON ALL EXPOSED EDGES.
7. PERFORMED STEPPED HOLE SIZED AS PER O.D. OF PIPE + 3"-4".

**SLOTS FOR GRATES**

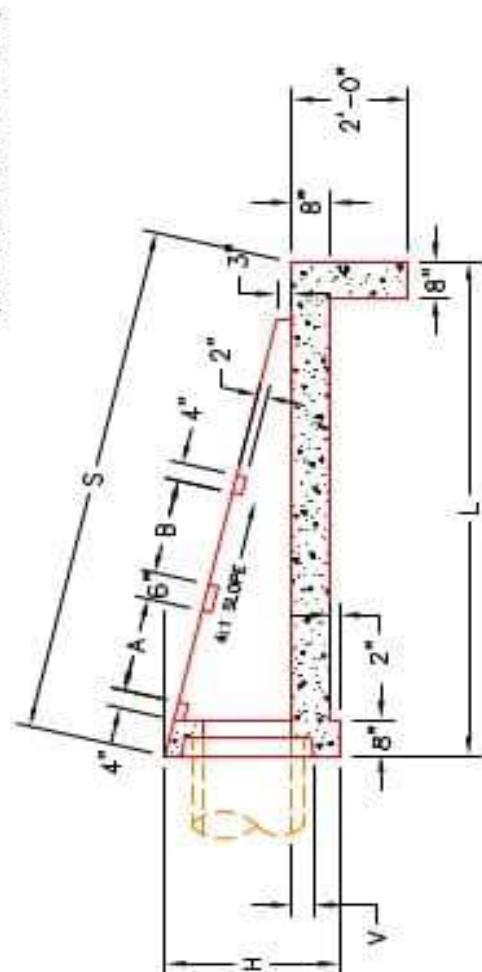
- A & B FOR 2 GRATES
- A, B & C FOR 3 GRATES
- A, B, C & D FOR 4 GRATES



SLOTS AS REQUIRED FOR STRUCTURAL STEEL GRATES (NOT SHOWN) AS SUPPLIED BY BOTTOMS ENGINEERING OR J.R. HOE & SONS (SEE CHART & DETAIL FOR QUANTITIES).



**PLAN VIEW**



**SECTION A-A**



INFRASTRUCTURE PRECAST, INC.  
 941 WEST 7TH ST., BEAVER DAM, KY. 42330  
 PHONE: (270) 363-2238, FAX: (270) 298-7424

KYTC 15" - 36" SLOPED & FLARED BOX INLET-OUTLET HEADWALL (NO SKEW)

DRAWING NO: ET-KYTC-124 DATE: 01-14-25  
 REVISION BY: J.H. ROSS, PE DRAWN BY: M. RICHARDS  
 WEB: WWW.ICASTING.COM SCALE: NTS

**DIMENSIONS**

PIPE Ø	H	L	S	R	V	W	A	B	C	D	NO. GRATES	CONCRETE YD <sup>3</sup>	LB. #4 BAR	LIFTING ANCHOR
15"	36"	100"	100"	36"	6"	37"	21"	21"	---	---	2 EA.	1.8	81	3 EA. CONAC BC418
18"	36"	100"	100"	36"	6"	37"	21"	21"	---	---	2 EA.	1.8	81	3 EA. CONAC BC418
24"	47"	138"	138"	47"	5"	107"	33"	33"	---	---	2 EA.	3.7	111	4 EA. CONAC BC418
30"	51"	154"	154"	51"	6"	127"	33"	33"	21"	---	1 EA.	3.8	148	4 EA. CONAC BC418
36"	57"	167"	167"	57"	6"	147"	33"	33"	21"	21"	2 EA.	5.1	187	4 EA. CONAC BC418