



Structure ID: 12-54245 1

P1 HWSFBIO30

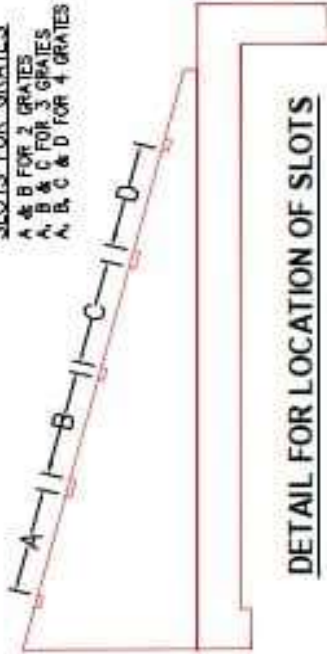
30" - SLOPED & FLARED BOX I/O F/F

NOTES:

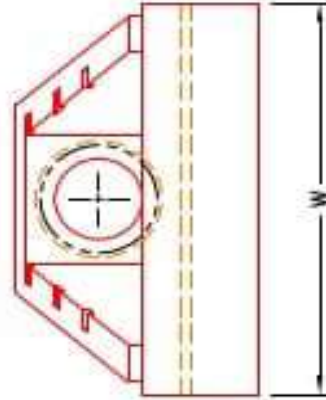
1. CONCRETE: KYTC APPROVED.
2. REINFORCING: #5 BAR @ 12" C/C E.W.-GRADE 60, (WITH 2" CONCRETE COVER MINIMUM)
3. REINFORCING BARS TO BE TACK WELDED OR TIED.
4. PIPE AND LIFTING ANCHOR POCKETS TO BE GROUTED WITH KYTC APPROVED NON-SHRINK GROUT.
5. DRAWING TO BE USED IN CONJUNCTION WITH KYTC STD. DRAWINGS ROB-105-06 & ROB-106-05 AND THE STANDARD SPECIFICATIONS FOR ROAD AND BRIDGE CONSTRUCTION.
6. 2" CHAMFER ON ALL EXPOSED EDGES.
7. PERFORMED STEPPED HOLE SIZED AS PER O.D. OF PIPE + 3"-4".

SLOTS FOR GRATES

- A & B FOR 2 GRATES
- A, B & C FOR 3 GRATES
- A, B, C & D FOR 4 GRATES

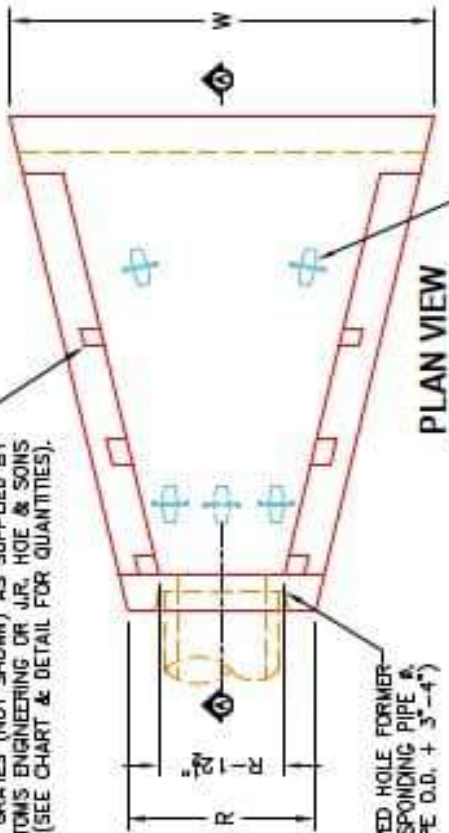


DETAIL FOR LOCATION OF SLOTS



FRONT ELEVATION

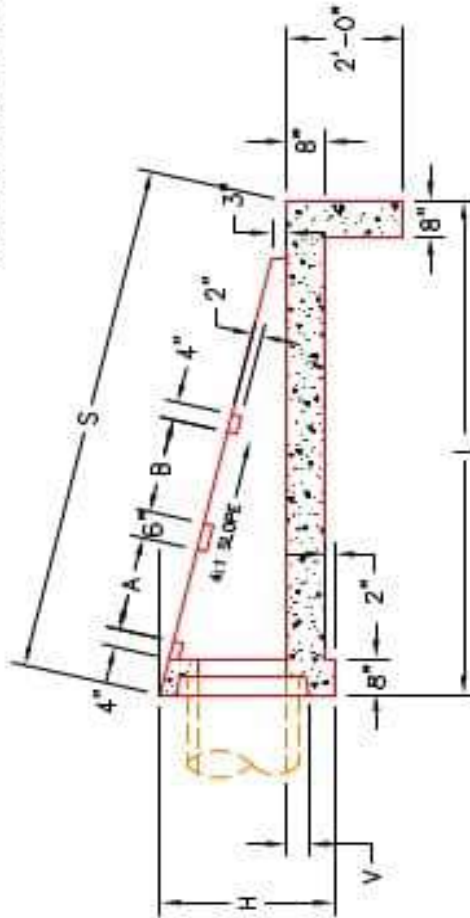
SLOTS AS REQUIRED FOR STRUCTURAL STEEL GRATES (NOT SHOWN) AS SUPPLIED BY BOTTOMS ENGINEERING OR J.R. HOE & SONS (SEE CHART & DETAIL FOR QUANTITIES).



PLAN VIEW

STEPPED HOLE FORMER FOR CORRESPONDING PIPE # (PIPE O.D. + 3"-4")

A-ANCHOR* LIFTING SYSTEM FOR PLANT & FIELD HANDLING. (SEE CHART FOR TYPE & QTY.)



SECTION A-A

DIMENSIONS

PIPE Ø	H	L	S	R	V	W	A	B	C	D	NO. GRATES	CONCRETE YD ³	LB# #4 BAR	LIFTING ANCHOR#
15"	36"	106"	106"	36"	6"	87"	21"	21"	---	---	2 EA.	1.8	81	2 EA. CONAC BC418
18"	36"	106"	106"	36"	6"	87"	21"	21"	---	---	2 EA.	1.8	81	2 EA. CONAC BC418
24"	47"	138"	138"	47"	5"	107"	33"	33"	---	---	2 EA.	3.7	111	4 EA. CONAC BC418
30"	51"	154"	154"	51"	6"	127"	33"	33"	21"	---	1 EA.	3.8	146	4 EA. CONAC BC418
36"	57"	167"	167"	57"	6"	147"	33"	33"	21"	21"	2 EA.	5.1	187	4 EA. CONAC BC418



INFRASTRUCTURE PRECAST, INC.
 901 WEST 7TH ST., BEAVER DAM, KY. 42330
 PHONE: (270) 363-2238, FAX: (270) 298-7424

KYTC 15"-36" SLOPED & FLARED BOX INLET-OUTLET HEADWALL (NO SKEW)

DRAWING NO: ET-KYTC-124 DATE: 01-14-25
 DESIGNED BY: J.H. ROSS, PE DRAWN BY: M. RICHARDS
 WEB: WWW.ICASTING.COM SCALE: NTS