



Structure ID: 11-54245 3

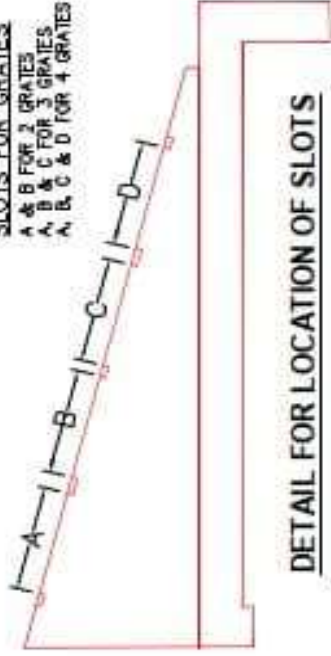
P1 HWSFBIO24

24" - SLOPED & FLARED BOX I/O F/F

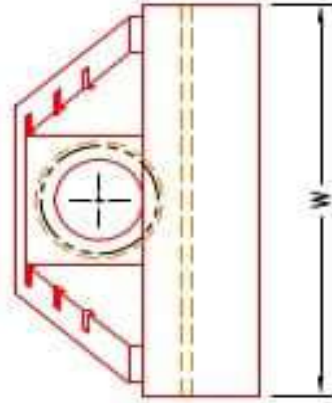
NOTES:

1. CONCRETE: KYTC APPROVED.
2. REINFORCING: #5 BAR @ 12" C/C E.W. - GRADE 60, (WITH 2" CONCRETE COVER MINIMUM)
3. REINFORCING BARS TO BE TACK WELDED OR TIED.
4. PIPE AND LIFTING ANCHOR POCKETS TO BE GROUTED WITH KYTC APPROVED NON-SHRINK GROUT.
5. DRAWING TO BE USED IN CONJUNCTION WITH KYTC STD. DRAWINGS RDB-105-08 & RDB-106-05 AND THE STANDARD SPECIFICATIONS FOR ROAD AND BRIDGE CONSTRUCTION.
6. 7" CHAMFER ON ALL EXPOSED EDGES.
7. PREFORMED STEPPED HOLE SIZED AS PER O.D. OF PIPE + 3"-4".

SLOTS FOR GRATES
 A & B FOR 2 GRATES
 A, B & C FOR 3 GRATES
 A, B, C & D FOR 4 GRATES

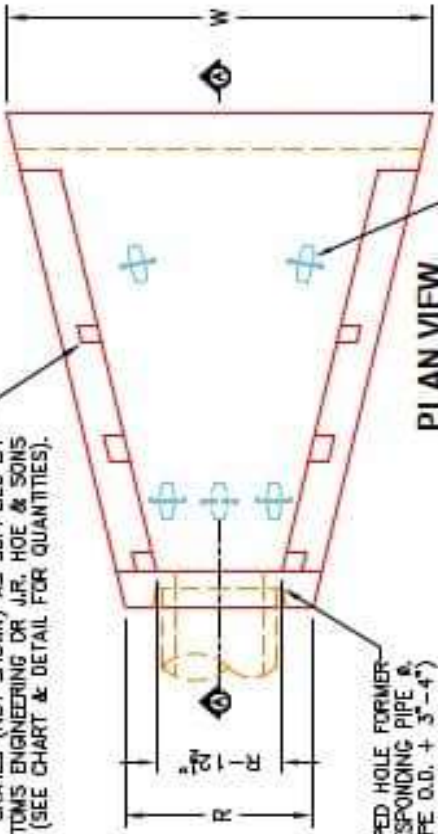


DETAIL FOR LOCATION OF SLOTS



FRONT ELEVATION

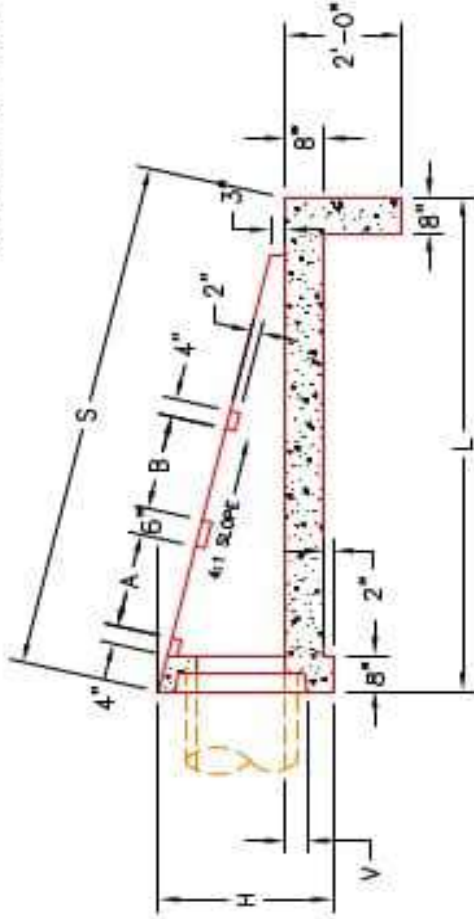
SLOTS AS REQUIRED FOR STRUCTURAL STEEL GRATES (NOT SHOWN) AS SUPPLIED BY BOTTOMS ENGINEERING OR J.R. HOE & SONS (SEE CHART & DETAIL FOR QUANTITIES).



PLAN VIEW

STEPPED HOLE FORMER FOR CORRESPONDING PIPE & (PIPE O.D. + 3"-4")

A-ANCHOR LIFTING SYSTEM FOR PLANT & FIELD HANDLING. (SEE CHART FOR TYPE & QTY.)



SECTION A-A



INFRASTRUCTURE PRECAST, INC.
 981 WEST 7TH ST., BEAVER DAM, KY, 42320
 PHONE: (270) 363-2238, FAX: (270) 298-7424

KYTC 15"-36" SLOPED & FLARED BOX INLET-OUTLET HEADWALL (NO SKEW)

DRAWING NO.: ET-KYTC-124 DATE: 01-14-25
 REVISION: BY: J.J. ROSS, PE DRAWN BY: M. RECHARGE
 WEB: WWW.IPCASTING.COM SCALE: NTS

DIMENSIONS

PIPE Ø	H	L	S	R	V	W	A	B	C	D	NO. GRATES	CONCRETE 10'	LSB. #4 BAR	LIFTING ANCHORS
15"	36"	102"	102"	36"	6"	87"	21"	21"	---	---	2 EA.	1.8	81	2 EA. DOMAC BC41B
18"	36"	102"	102"	36"	6"	87"	21"	21"	---	---	2 EA.	1.8	81	2 EA. DOMAC BC41B
24"	42"	108"	132"	42"	6"	103"	27"	27"	---	---	3 EA.	2.7	111	4 EA. DOMAC BC41B
30"	54"	138"	156"	54"	6"	127"	33"	33"	21"	---	4 EA.	3.6	144	4 EA. DOMAC BC41B
36"	66"	162"	186"	66"	6"	147"	39"	39"	21"	21"	4 EA.	4.2	168	4 EA. DOMAC BC41B