



Structure ID: 10-54245 2

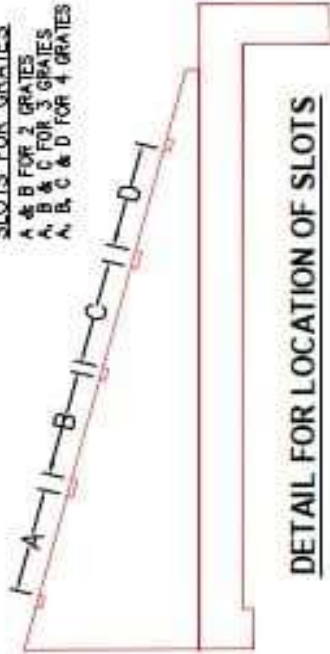
P1 HWSFBIO18

18" - SLOPED & FLARED BOX I/O F/F

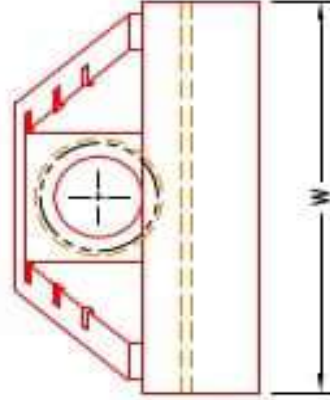
NOTES:

1. CONCRETE: KYTC APPROVED.
2. REINFORCING: #5 BAR @ 12" C/C E.W.-GRADE 60, (WITH 2" CONCRETE COVER MINIMUM)
3. REINFORCING BARS TO BE TACK WELDED OR TIED.
4. PIPE AND LIFTING ANCHOR POCKETS TO BE GROUTED WITH KYTC APPROVED NON-SHRINK GROUT.
5. DRAWING TO BE USED IN CONJUNCTION WITH KYTC STD. DRAWINGS ROB-105-06 & ROB-106-05 AND THE STANDARD SPECIFICATIONS FOR ROAD AND BRIDGE CONSTRUCTION.
6. 7" CHAMFER ON ALL EXPOSED EDGES.
7. PERFORMED STEPPED HOLE SIZED AS PER O.D. OF PIPE + 3"-4".

SLOTS FOR GRATES
 A & B FOR 2 GRATES
 A, B & C FOR 3 GRATES
 A, B, C & D FOR 4 GRATES

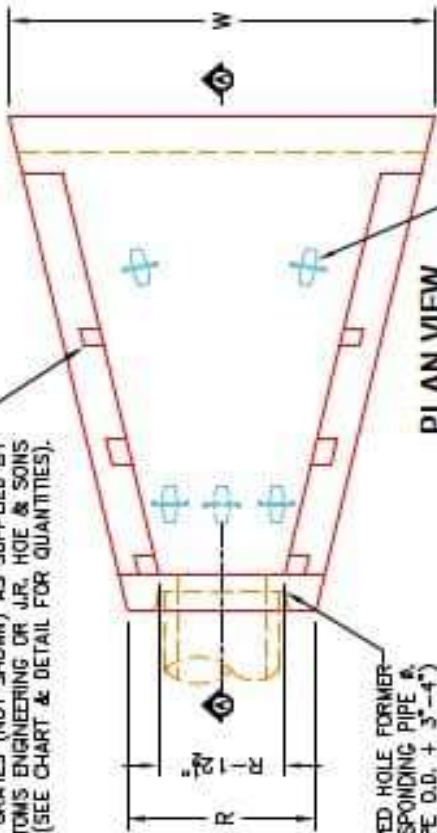


DETAIL FOR LOCATION OF SLOTS



FRONT ELEVATION

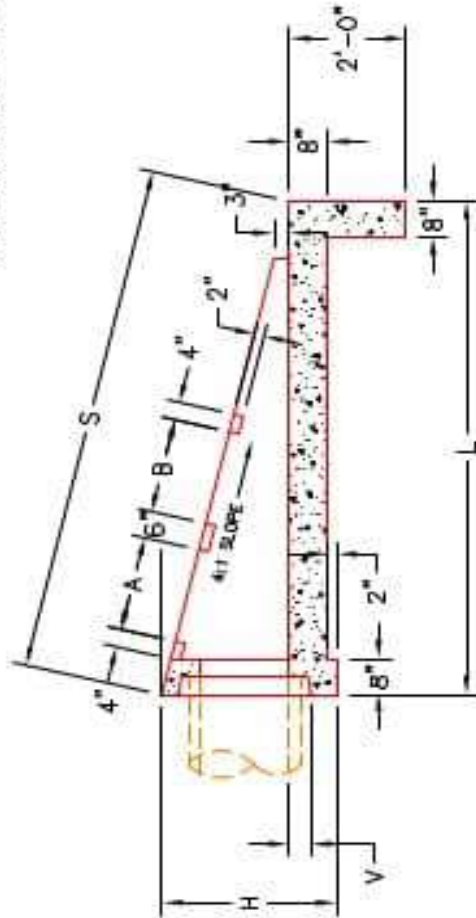
SLOTS AS REQUIRED FOR STRUCTURAL STEEL GRATES (NOT SHOWN) AS SUPPLIED BY BOTTOMS ENGINEERING OR J.R. HOE & SONS (SEE CHART & DETAIL FOR QUANTITIES).



PLAN VIEW

STEPPED HOLE FORMER FOR CORRESPONDING PIPE & (PIPE O.D. + 3"-4")

A-ANCHOR LIFTING SYSTEM FOR PLANT & FIELD HANDLING. (SEE CHART FOR TYPE & QTY.)



SECTION A-A



INFRASTRUCTURE PRECAST, INC.
 981 WEST 7TH ST. BEAVER DAM, KY. 42320
 PHONE: (270) 363-2238, FAX: (270) 298-7424

KYTC 15"-36" SLOPED & FLARED BOX INLET-OUTLET HEADWALL (NO SKEW)

DRAWING NO: ET-KYTC-124 DATE: 01-14-25
 REVIEWED BY: J.H. ROSS, PE DRAWN BY: N. RICHARDS
 WEB: WWW.ICASTPC.COM SCALE: N/A

DIMENSIONS

PIPE Ø	H	L	S	B	R	V	W	A	B	C	D	NO. GRATES	CONCRETE	REINFORCING	LIFTING ANCHORS
15"	36"	102"	102"	36"	36"	4"	37"	31"	31"	---	---	2 EA.	1.8	#1	3 EA. CONCAC BOARS
18"	36"	102"	102"	36"	36"	4"	37"	31"	31"	---	---	2 EA.	1.8	#1	3 EA. CONCAC BOARS
24"	42"	108"	132"	42"	42"	5"	107"	33"	33"	---	---	2 EA.	2.7	#1	4 EA. CONCAC BOARS
30"	48"	108"	138"	48"	48"	6"	127"	35"	35"	21"	21"	2 EA.	3.8	#1	4 EA. CONCAC BOARS
36"	54"	108"	144"	54"	54"	6"	147"	37"	37"	21"	21"	2 EA.	5.1	#1	4 EA. CONCAC BOARS