

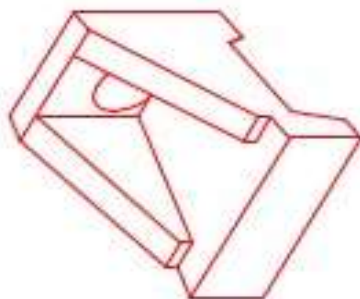


**Structure ID: ST-1**

**P1 HWSF15**

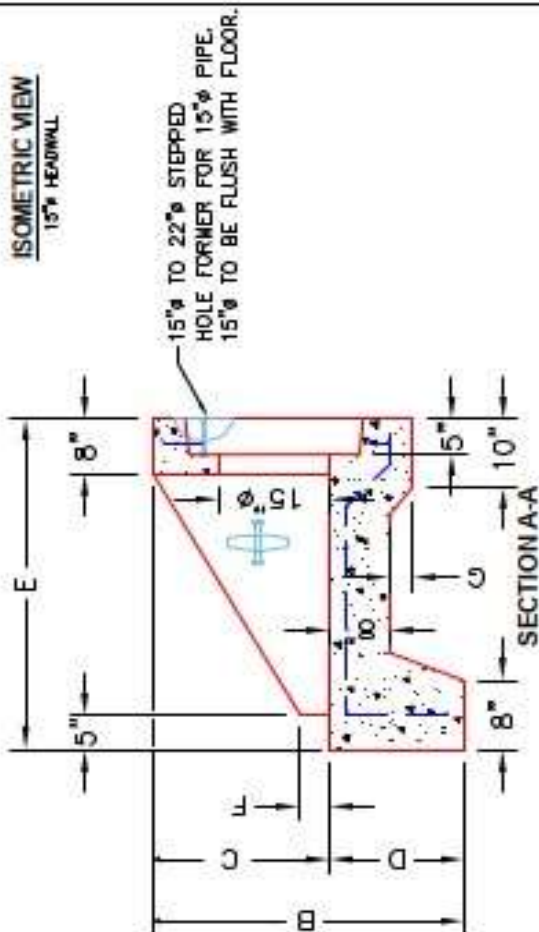
**15" - SLOPED & FLARED HEADWALL**

DIMENSIONS										
PIPE Ø	A	B	C	D	E	F	G	H	I	WEIGHT
15"	2'-8"	3'-6"	2'-0"	1'-8"	4'-0"	3"	2"	2'-0"	4'-0"	3,181 LBS.



ISOMETRIC VIEW  
15" HEADWALL

"A"-ANCHOR LIFTING SYSTEM FOR PLANT & FIELD HANDLING.



**FRONT ELEVATION**

- NOTES:**
1. CONCRETE: 4500 PSI @ 28 DAYS.
  2. REINFORCING: #4 BAR @ 12" C/C E-W-GRADE @0, (WITH 2" CONCRETE COVER MINIMUM)
  3. REINFORCING BARS TO BE TACK WELDED OR TIED.
  4. DRAWING TO BE USED IN CONJUNCTION WITH KYTC STD. DRAWING PDH-020-03 AND THE STANDARD SPECIFICATIONS FOR ROAD AND BRIDGE CONSTRUCTION.
  5. CHAMFER ON ALL EXPOSED EDGES.

**PRODUCTION WORK ORDER**

- QUALITY CONTROL CHECKLIST
- ALL DIMENSIONS CORRECT.
  - LIFTERS INSTALLED.
  - STEPPED HF CORRECT SIZE.
  - REINFORCING CORRECT.
  - DISPENSER BLOCK INSTALLED.
  - EDGES CHAMFERED.
  - ALL PATCHWORK ACCEPTABLE.



DESCRIPTION: KYTC 15" SLOPED & FLARED HEADWALL	PRODUCT I.D.: HWSF15
CUSTOMER: STOCK	PRODUCT VIEW: RIGHT SIDE UP
PROJECT: STOCK INVENTORY	PLANT: BEAVER DAM, KY.
STRUCTURE D.: N/A	WEIGHT: 3,181 LBS.
QUOTE/SALES ORDER NO: N/A	TOP SECTION JOINT: N/A
CHECK: J.H. ROSS, PE	BASE SECTION JOINT: N/A
DRAWING: N. RICHARDS	QC CHECK INITIALS:
DATE: 09/15/22	SCALE: NTS
PG. 1 of 1	