

Job Name: 25-4212 - Greentree Lane Sewer  
 Job Location: Mt. Washington, KY  
 Contractor: Citgo Waterworks

Plant: 100

12/10/2025 2:26:52 PM

Tech: J. Horsley - F

PC: C. Goff



**Structure ID: B1**

**P3 MH060TS13-48ECC**

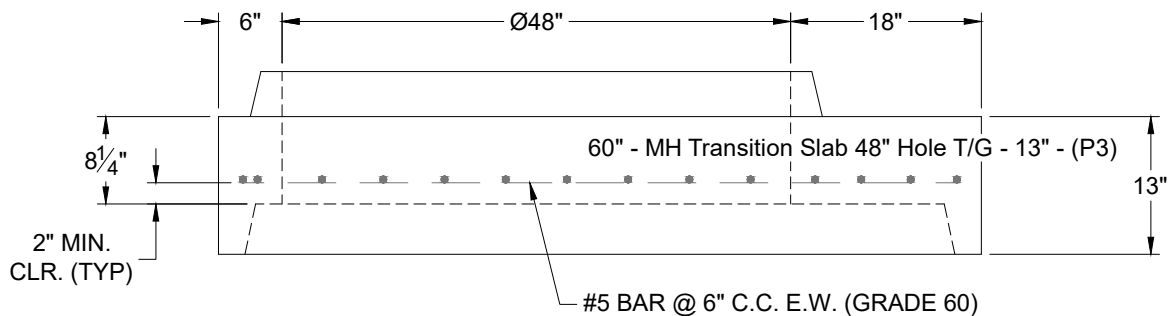
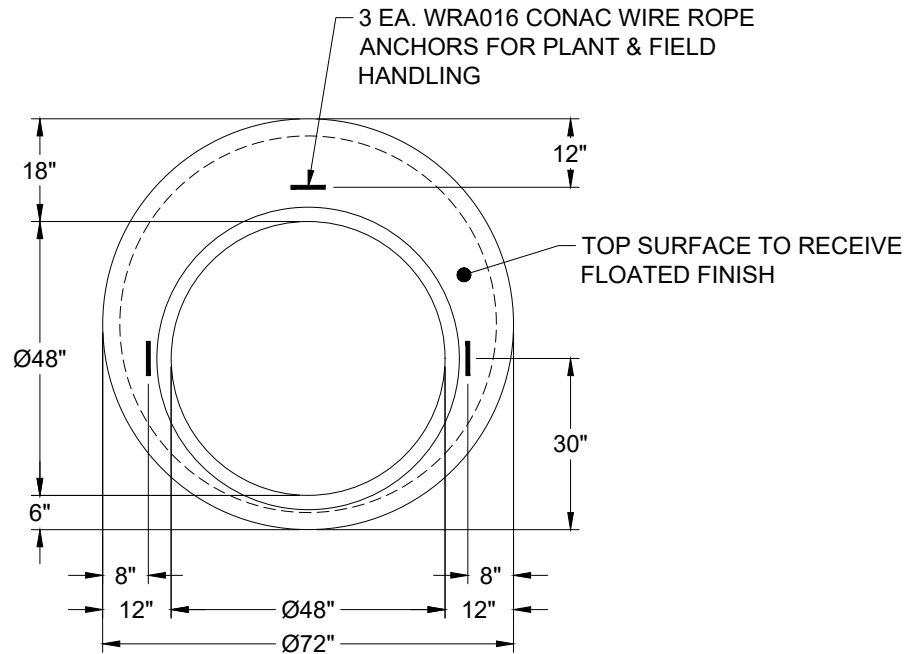
**MH Transition Slab 48" Hole T/G**

- P5) 24" - CASTING HEIGHT - 4.75"
- P4) 48" - ECC CONE w/ 24" HOLE NO STEP F/G - 24"
- P3) 60" - MH Transition Slab 48" Hole T/G - 13"
- P2) 60" - MH RISER Custom Ht T/F - 50"
- P1) 60" - P.I.P. BY OTHERS - BTM SLAB F/n - 0"
- 1) JOINT WRAP - 0.065"x6"x50' CONSEAL CS212
- 1) JOINT WRAP PRIMER - CONSEAL CS-75 (1 gal.)
- 1) SPECIAL Internal Coating - Carboline 300M
- 2) 60" - Conseal CS-102 1.00" (Double)
- 1) 48" - Conseal CS-102 1.00" (Double)
- 1) PSX - 16M NYLO
- 2) DOGHOUSE - 16"x22"
- 139.41 SqFt) Carboline Bitumastic 300M [INT]

- 0 lb
- 1550 lb
- 1928 lb
- 4778 lb
- 0 lb
- 0 lb
- 0 lb
- 0 lb
- 0 lb
- 0 lb
- 0 lb
- 0 lb
- 8 lb
- 0 lb
- 0 lb

Structure Total: 8264 lb

- Structure Notes:**
1. PER ASTM C-478 SPECIFICATIONS
  2. CONCRETE: 4,000 PSI AT 28 DAYS
  3. REINFORCEMENT: #5 BAR @ 6" C.C. E.W. (GRADE 60) - 2" MIN. REBAR CLEARANCE (TYP)
  4. NO STEPS
  5. CARBOLINE 300M INTERNAL COATING REQUIRED
  6. CASTING SUPPLIED BY OTHERS
  7. LIFTERS: 3 EA. WRA016 CONAC WIRE ROPE ANCHORS FOR PLANT & FIELD HANDLING



Coating (Int): Carboline Bitumastic 300M  
 Coating (Ext):

Seam Up: Tongue  
 Seam Dn: Groove

Wall Thickness: 6"

Height (Ext): 13"

Weight (Net): 1928 lb  
 Volume (Net): 0.49cu.yd