

Job Name: 25-4212 - Greentree Lane Sewer
Job Location: Mt. Washington, KY
Contractor: Citgo Waterworks

PC: C. Goff
 TECH: J. Horsley - F
 Plant: 100



Structure ID: **A7**
 Spec: Sanitary
 Type: SAN.MH Transition
 Size: 60"

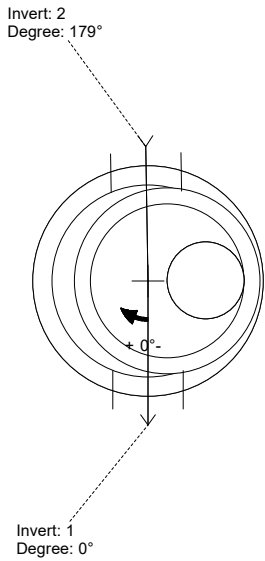
Rim: 673.2'
 Invert: 664.87'
 Rim to Invert: 8.33'

Sump: 2"
 Floor (Top): 664.703'
 Floor Height: 8"

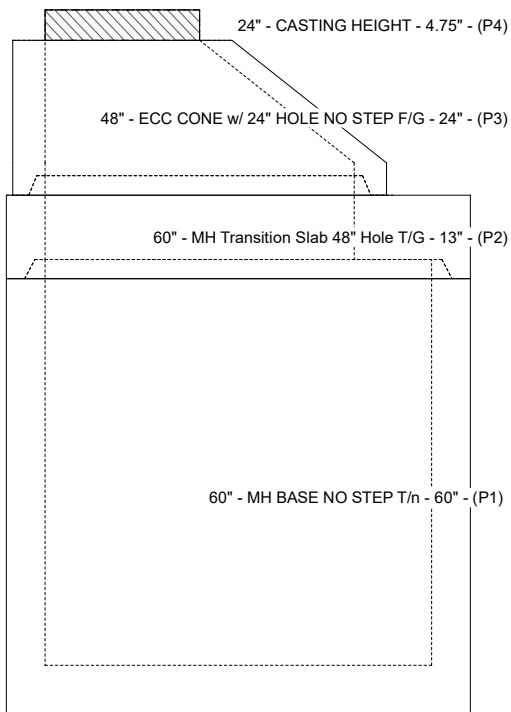
Floor (Bot): 664.037'
 Overall Height: 9.146'
 Slack: 0.21"

- Structure Notes:**
1. PER ASTM C-478 SPECIFICATIONS
 2. CONCRETE: 4,000 PSI AT 28 DAYS
 3. REINFORCEMENT: PER ASTM A615
 4. NO STEPS
 5. CARBOLINE 300M INTERNAL COATING REQUIRED
 6. INVERT CHANNEL REQUIRED
 7. CASTING SUPPLIED BY OTHERS

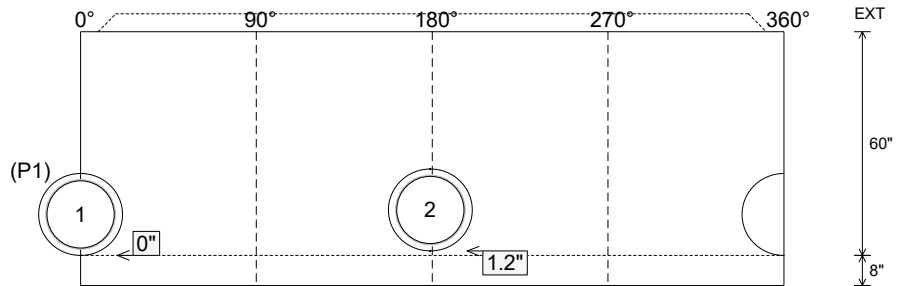
- STRUCTURE SUMMARY:**
- P4) 24" - CASTING HEIGHT - 4.75" 0 lb
 - P3) 48" - ECC CONE w/ 24" HOLE NO STEP F/G - 24" 1550 lb
 - P2) 60" - MH Transition Slab 48" Hole T/G - 13" 1928 lb
 - P1) 60" - MH BASE NO STEP T/n - 60" 8606 lb
 - 1) JOINT WRAP - 0.065"x6"x50' CONSEAL CS212 0 lb
 - 1) JOINT WRAP PRIMER - CONSEAL CS-75 (1 gal.) 0 lb
 - 1) 60" - MH INVERT CHANNEL - FULL HEIGHT 2692 lb
 - 1) SPECIAL Internal Coating - Carboline 300M 0 lb
 - 1) 60" - Conseal CS-102 1.00" (Double) 0 lb
 - 1) 48" - Conseal CS-102 1.00" (Double) 0 lb
 - 2) Kor-N-Seal2 - S206-22 13 lb
 - 152.5 SqFt) Carboline Bitumastic 300M [INT] 0 lb
- Structure Total: **14789 lb**



Position	Elev	Angle	Pipe	Pipe OD	Hole	Connector	Up (")	Ref
Rim	673.2'							
Reducer	669.703'							
Invert 1	664.87'	0°	18" PVC SDR35	18.75"	22"	Kor-N-Seal2 S206-22	0"	P1
Invert 2	664.97'	179°	18" PVC SDR35	18.75"	22"	Kor-N-Seal2 S206-22	1.2"	P1
Invert 3								
Invert 4								
Invert 5								
Invert 6								
Invert 7								
Invert 8								



Cast (Int. Dim.) - Interior Dimensions



Submittal Drawing
 12/10/2025 2:20:19 PM

SUBMITTAL
 APPROVED BY: