

Job Name: 25-4212 - Greentree Lane Sewer	Plant: 100	Tech: J. Horsley - F
Job Location: Mt. Washington, KY	12/10/2025 2:25:47 PM	PC: C. Goff
Contractor: Citgo Waterworks		



**Structure ID: A5**

**P1 MH060BA60**

**MH BASE NO STEP T/n**

P4) 24" - CASTING HEIGHT - 4.75"	0 lb
P3) 48" - ECC CONE w/ 24" HOLE NO STEP F/G - 30"	2050 lb
P2) 60" - MH Transition Slab 48" Hole T/G - 13"	1928 lb
P1) 60" - MH BASE NO STEP T/n - 60"	8606 lb
1) JOINT WRAP - 0.065"x6"x50' CONSEAL CS212	0 lb
1) JOINT WRAP PRIMER - CONSEAL CS-75 (1 gal.)	0 lb
1) 60" - MH INVERT CHANNEL - FULL HEIGHT	2692 lb
1) SPECIAL Internal Coating - Carboline 300M	0 lb
1) 60" - Conseal CS-102 1.00" (Double)	0 lb
1) 48" - Conseal CS-102 1.00" (Double)	0 lb
2) Kor-N-Seal2 - S206-22	13 lb
156.8 SqFt) Carboline Bitumastic 300M [INT]	0 lb
<b>Structure Total:</b>	<b>15289 lb</b>

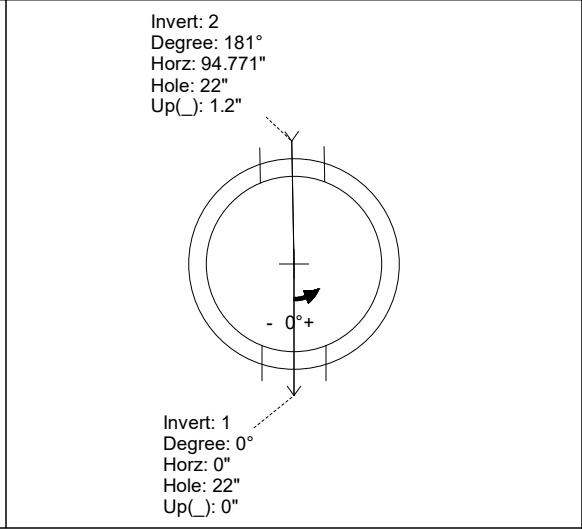
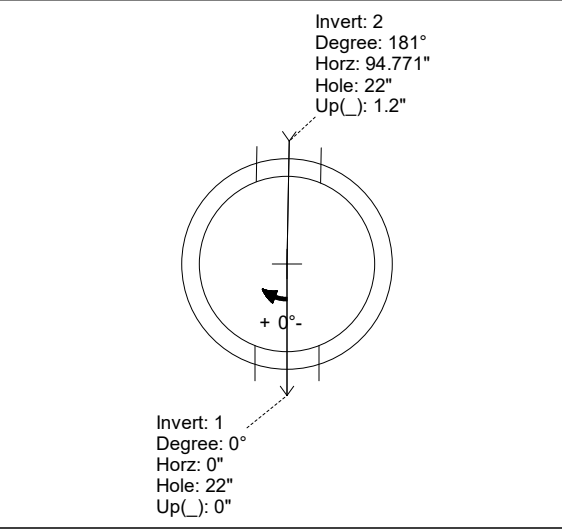
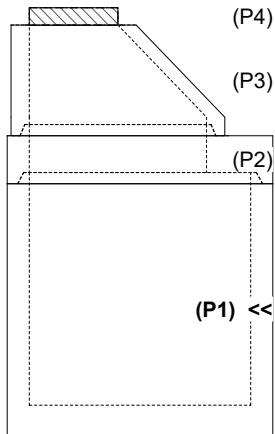
- Structure Notes:**
1. PER ASTM C-478 SPECIFICATIONS
  2. CONCRETE: 4,000 PSI AT 28 DAYS
  3. REINFORCEMENT: PER ASTM A615
  4. NO STEPS
  5. CARBOLINE 300M INTERNAL COATING REQUIRED
  6. INVERT CHANNEL REQUIRED
  7. CASTING SUPPLIED BY OTHERS

Rim: 668.08' Rim to Invert: 8.81' Slack: -0.03" Sump: 2" Step Position:

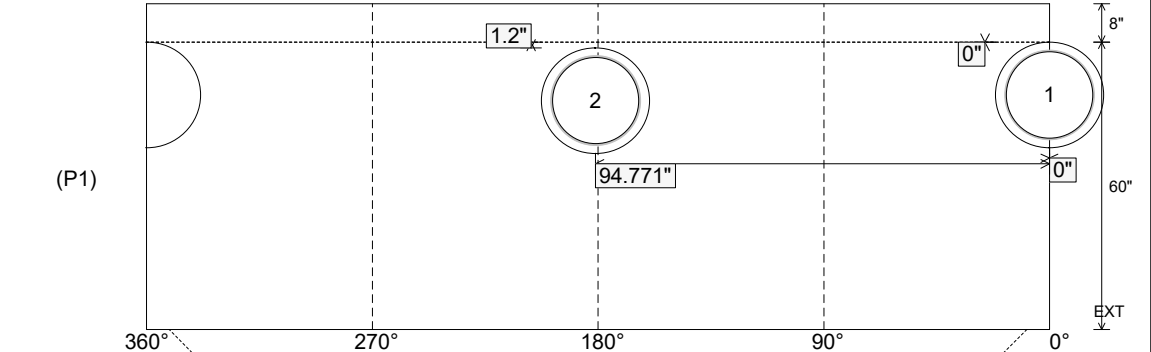
Position	Elev	Angle	Ext. (cw)	Pipe	Pipe OD	Connector	Hole	Horz Size	Up ( )	Offset
Invert 1	659.27'	0°	0"	18" PVC SDR35	18.75"	Kor-N-Seal2 S206-22	22"	22.525"	0"	0"
Invert 2	659.37'	181°	113.726"	18" PVC SDR35	18.75"	Kor-N-Seal2 S206-22	22"	22.525"	1.2"	0"
Invert 3										
Invert 4										
Invert 5										
Invert 6										
Invert 7										
Invert 8										

RIGHT-SIDE UP VIEW (int. dimensions)

UPSIDE-DOWN VIEW (int. dimensions)



INSIDE WALL DIMENSIONS



Coating (Int): Carboline Bitumastic 300M Coating (Ext):	Seam Up: Tongue Seam Dn: n/a	Wall Thickness: 6" Floor Height: 8"	Height (Int): 60" Height (Ext): 68"	Weight (Net): 8606 lb Volume (Net): 2.2cu.yd
--	---------------------------------	--	--	---

Job Name: 25-4212 - Greentree Lane Sewer	Plant: 100	Tech: J. Horsley - F	
Job Location: Mt. Washington, KY	12/10/2025 2:25:47 PM	PC: C. Goff	
Contractor: Citgo Waterworks			

**Structure ID: A5**

**P1 MH060BA60**

**MH BASE NO STEP T/n**

P4) 24" - CASTING HEIGHT - 4.75"	0 lb
P3) 48" - ECC CONE w/ 24" HOLE NO STEP F/G - 30"	2050 lb
P2) 60" - MH Transition Slab 48" Hole T/G - 13"	1928 lb
P1) 60" - MH BASE NO STEP T/n - 60"	8606 lb
1) JOINT WRAP - 0.065"x6"x50' CONSEAL CS212	0 lb
1) JOINT WRAP PRIMER - CONSEAL CS-75 (1 gal.)	0 lb
1) 60" - MH INVERT CHANNEL - FULL HEIGHT	2692 lb
1) SPECIAL Internal Coating - Carboline 300M	0 lb
1) 60" - Conseal CS-102 1.00" (Double)	0 lb
1) 48" - Conseal CS-102 1.00" (Double)	0 lb
2) Kor-N-Seal2 - S206-22	13 lb
156.8 SqFt) Carboline Bitumastic 300M [INT]	0 lb
Structure Total:	15289 lb

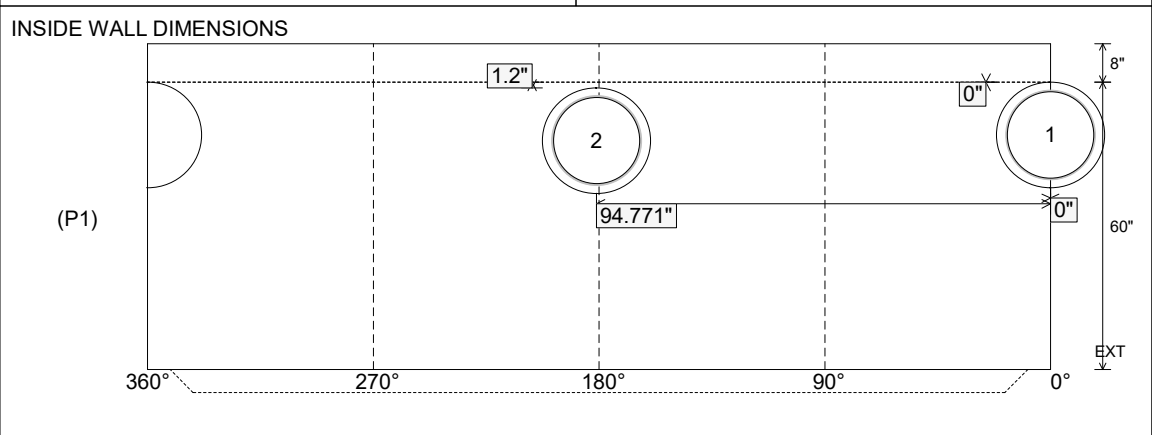
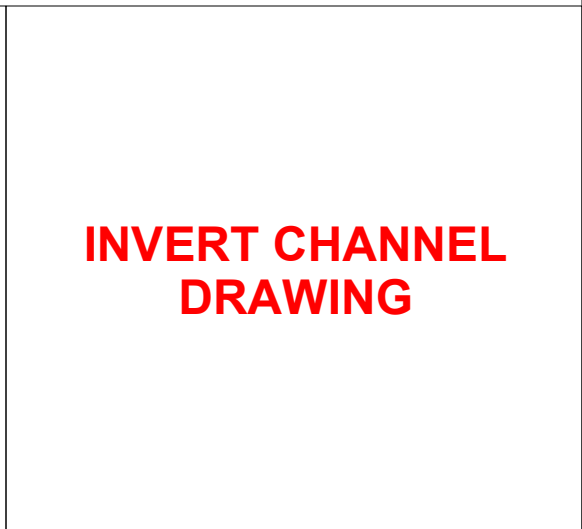
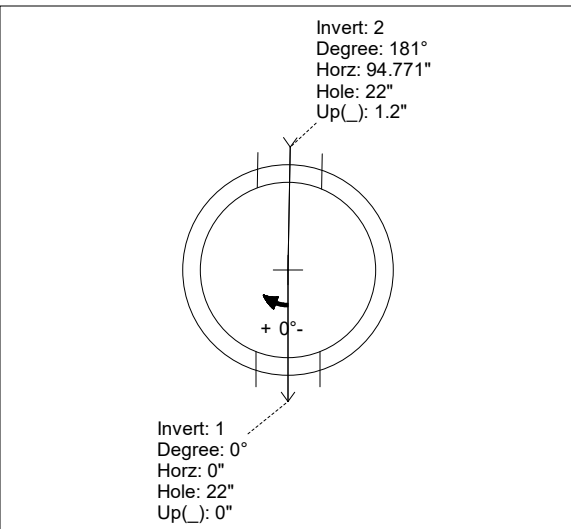
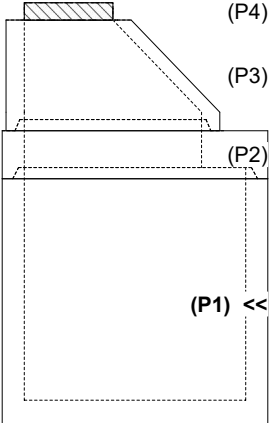
**Structure Notes:**

- PER ASTM C-478 SPECIFICATIONS
- CONCRETE: 4,000 PSI AT 28 DAYS
- REINFORCEMENT: PER ASTM A615
- NO STEPS
- CARBOLINE 300M INTERNAL COATING REQUIRED
- INVERT CHANNEL REQUIRED
- CASTING SUPPLIED BY OTHERS

Rim: 668.08'    Rim to Invert: 8.81'    Slack: -0.03"    Sump: 2"    Step Position:

Position	Elev	Angle	Ext. (cw)	Pipe	Pipe OD	Connector	Hole	Horz Size	Up (↓)	Offset
Invert 1	659.27'	0°	0"	18" PVC SDR35	18.75"	Kor-N-Seal2 S206-22	22"	22.525"	0"	0"
Invert 2	659.37'	181°	113.726"	18" PVC SDR35	18.75"	Kor-N-Seal2 S206-22	22"	22.525"	1.2"	0"
Invert 3										
Invert 4										
Invert 5										
Invert 6										
Invert 7										
Invert 8										

**RIGHT-SIDE UP VIEW (int. dimensions)      UPSIDE-DOWN VIEW (int. dimenions)**



Coating (Int): Carboline Bitumastic 300M Coating (Ext):	Seam Up: Tongue Seam Dn: n/a	Wall Thickness: 6" Floor Height: 8"	Height (Int): 60" Height (Ext): 68"	Weight (Net): 8606 lb Volume (Net): 2.2cu.yd
--	---------------------------------	--	--	---