

Job Name: 25-4212 - Greentree Lane Sewer  
 Job Location: Mt. Washington, KY  
 Contractor: Citgo Waterworks

Plant: 100

Tech: J. Horsley - F

12/10/2025 2:25:46 PM

PC: C. Goff



**Structure ID: A4**

**P1 MH060BA42**

**MH BASE w/DROP NO STEPS T/n**

- P5) 24" - CASTING HEIGHT - 4.75"
- P4) 48" - ECC CONE w/ 24" HOLE NO STEP F/G - 30"
- P3) 60" - MH Transition Slab 48" Hole T/G - 13"
- P2) 60" - MH RISER w/DROP Custom Ht T/G - 48"
- P1) 60" - MH BASE w/DROP NO STEPS T/n - 42"
- 1) JOINT WRAP - 0.065"x6"x50' CONSEAL CS212
- 1) JOINT WRAP PRIMER - CONSEAL CS-75 (1 gal.)
- 1) 60" - MH INVERT CHANNEL - FULL HEIGHT
- 1) SPECIAL Internal Coating - Carboline 300M
- 1) SECONDARY POUR - Add Drop to Base
- 1) SECONDARY POUR - Add Drop to Riser
- 2) 60" - Conseal CS-102 1.00" (Double)
- 1) 48" - Conseal CS-102 1.00" (Double)
- 2) Kor-N-Seal2 - S206-22
- 1) Drop Tee - 12" PVC
- 1) Drop Elbow - 12" PVC

- Structure Notes:**
1. PER ASTM C-478 SPECIFICATIONS
  2. CONCRETE: 4,000 PSI AT 28 DAYS
  3. REINFORCEMENT: PER ASTM A615
  4. NO STEPS
  5. CARBOLINE 300M INTERNAL COATING REQUIRED
  6. INVERT CHANNEL REQUIRED
  7. CASTING SUPPLIED BY OTHERS
  8. EXTERNAL DROP AT INVERTS 3 & 4 SUPPLIED BY ICAST

**FIRST POUR (BASE): 6,665 LBS**  
**SECOND POUR (DROP): 2,150 LBS**

196.07 SqFt) Carboline Bitumastic 300M [INT]

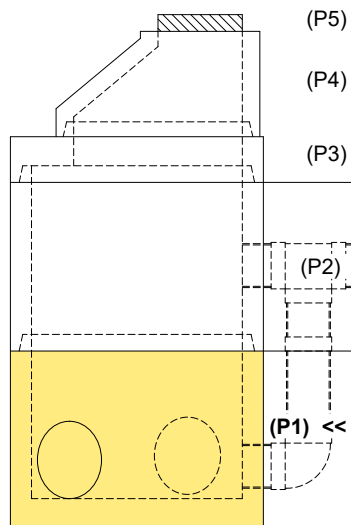
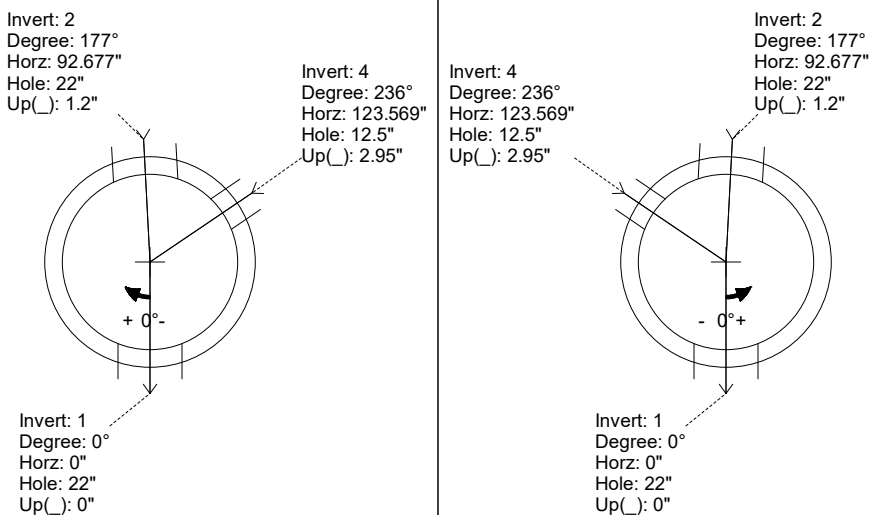
Structure Total: 22511 lb

Rim: 669.83' Rim to Invert: 11.36' Slack: 0.57" Sump: 2" Step Position:

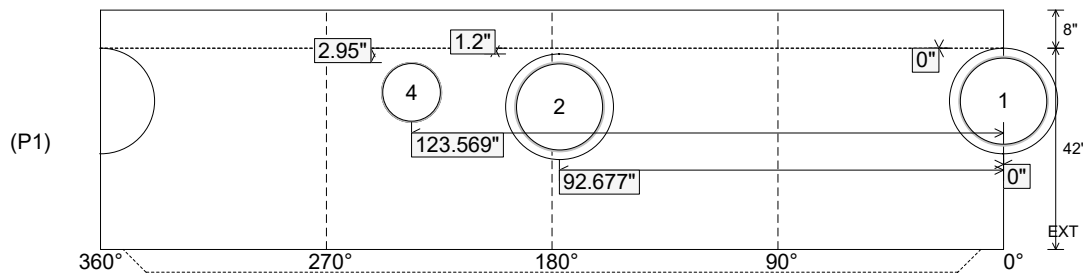
Position	Elev	Angle	Ext. (cw)	Pipe	Pipe OD	Connector	Hole	Horz Size	Up (")	Offset
Invert 1	658.47'	0°	0"	18" PVC SDR35	18.75"	Kor-N-Seal2 S206-22	22"	22.525"	0"	0"
Invert 2	658.57'	177°	111.212"	18" PVC SDR35	18.75"	Kor-N-Seal2 S206-22	22"	22.525"	1.2"	0"
Invert 3										
Invert 4	658.57'	236°	148.283"	12" PVC SDR35	12.5"	Drop Elbow 12" PVC	12.5"	12.592"	2.95"	0"
Invert 5										
Invert 6										
Invert 7										
Invert 8										

RIGHT-SIDE UP VIEW (int. dimensions)

UPSIDE-DOWN VIEW (int. dimensions)



INSIDE WALL DIMENSIONS



Coating (Int): Carboline Bitumastic 300M  
 Coating (Ext):

Seam Up: Tongue  
 Seam Dn: n/a

Wall Thickness: 6"  
 Floor Height: 8"

Height (Int): 42"  
 Height (Ext): 50"

Weight (Net): 6665 lb  
 Volume (Net): 1.7cu.yd

Job Name: 25-4212 - Greentree Lane Sewer  
 Job Location: Mt. Washington, KY  
 Contractor: Citgo Waterworks

Plant: 100  
 12/10/2025 2:25:46 PM

Tech: J. Horsley - F  
 PC: C. Goff



**Structure ID: A4**

**P1 MH060BA42**

**MH BASE w/DROP NO STEPS T/n**

- P5) 24" - CASTING HEIGHT - 4.75"
- P4) 48" - ECC CONE w/ 24" HOLE NO STEP F/G - 30"
- P3) 60" - MH Transition Slab 48" Hole T/G - 13"
- P2) 60" - MH RISER w/DROP Custom Ht T/n - 48"
- P1) 60" - MH BASE w/DROP NO STEPS T/n - 42"
- 1) JOINT WRAP - 0.065"x6"x50' CONSEAL CS212
- 1) JOINT WRAP PRIMER - CONSEAL CS-75 (1 gal.)
- 1) 60" - MH INVERT CHANNEL - FULL HEIGHT
- 1) SPECIAL Internal Coating - Carboline 300M
- 1) SECONDARY POUR - Add Drop to Base
- 1) SECONDARY POUR - Add Drop to Riser
- 2) 60" - Conseal CS-102 1.00" (Double)
- 1) 48" - Conseal CS-102 1.00" (Double)
- 2) Kor-N-Seal2 - S206-22
- 1) Drop Tee - 12" PVC
- 1) Drop Elbow - 12" PVC

0 lb  
 2050 lb  
 1928 lb  
 4949 lb  
 6665 lb  
 0 lb  
 0 lb  
 2692 lb  
 0 lb  
 2150 lb  
 2064 lb  
 0 lb  
 0 lb  
 13 lb  
 0 lb  
 0 lb  
 0 lb

- Structure Notes:**
1. PER ASTM C-478 SPECIFICATIONS
  2. CONCRETE: 4,000 PSI AT 28 DAYS
  3. REINFORCEMENT: PER ASTM A615
  4. NO STEPS
  5. CARBOLINE 300M INTERNAL COATING REQUIRED
  6. INVERT CHANNEL REQUIRED
  7. CASTING SUPPLIED BY OTHERS
  8. EXTERNAL DROP AT INVERTS 3 & 4 SUPPLIED BY ICAST
  9. ADD 12" SDR 35 DROP & ELBOW AT INVERT 4

Structure Total: 22511 lb

**FIRST POUR (BASE): 6,665 LBS**

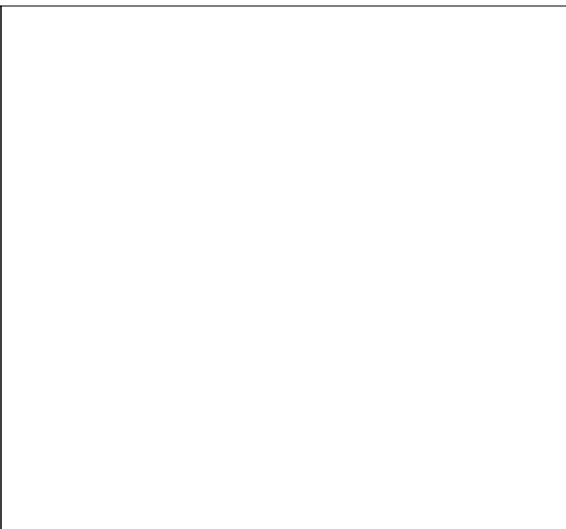
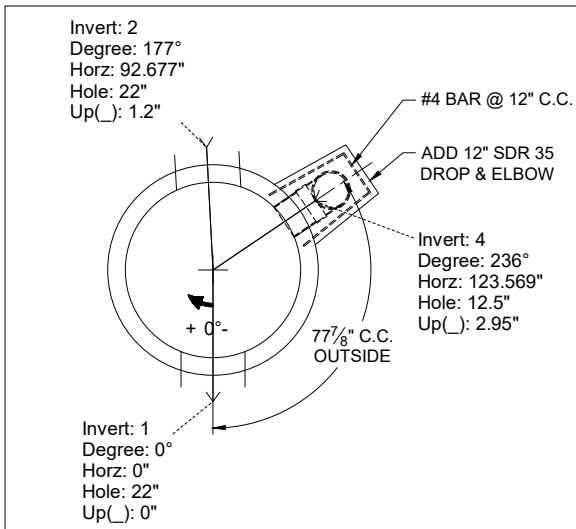
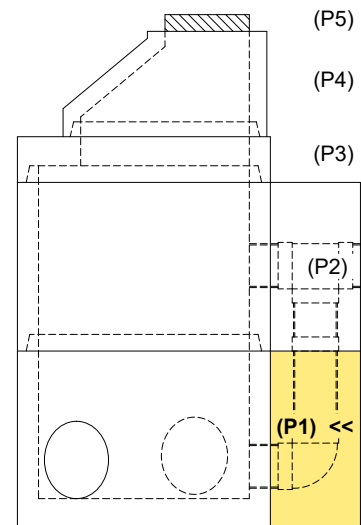
**SECOND POUR (DROP): 2,150 LBS**

Rim: 669.83' Rim to Invert: 11.36' Slack: 0.57" Sump: 2" Step Position:

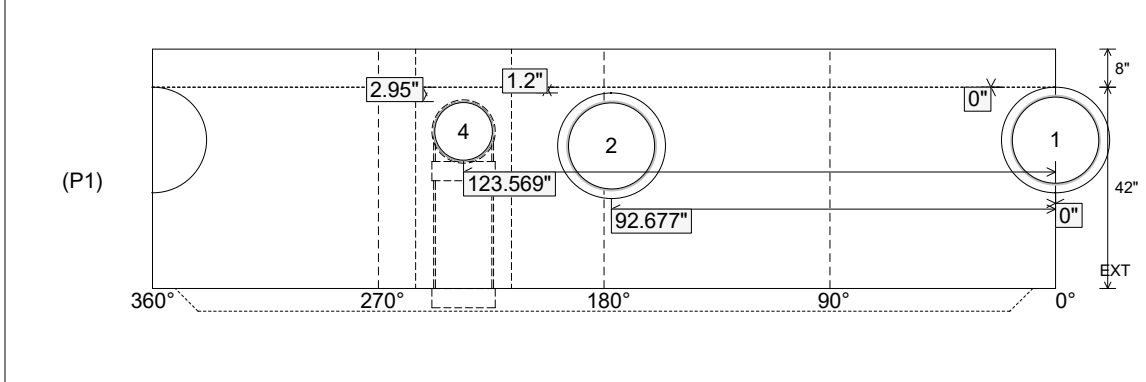
Position	Elev	Angle	Ext. (cw)	Pipe	Pipe OD	Connector	Hole	Horz Size	Up ( )	Offset
Invert 1	658.47'	0°	0"	18" PVC SDR35	18.75"	Kor-N-Seal2 S206-22	22"	22.525"	0"	0"
Invert 2	658.57'	177°	111.212"	18" PVC SDR35	18.75"	Kor-N-Seal2 S206-22	22"	22.525"	1.2"	0"
Invert 3										
Invert 4	658.57'	236°	148.283"	12" PVC SDR35	12.5"	Drop Elbow 12" PVC	12.5"	12.592"	2.95"	0"
Invert 5										
Invert 6										
Invert 7										
Invert 8										

RIGHT-SIDE UP VIEW (int. dimensions)

UPSIDE-DOWN VIEW (int. dimensions)



INSIDE WALL DIMENSIONS



Coating (Int): Carboline Bitumastic 300M Coating (Ext):	Seam Up: Tongue Seam Dn: n/a	Wall Thickness: 6" Floor Height: 8"	Height (Int): 42" Height (Ext): 50"	Weight (Net): 6665 lb Volume (Net): 1.7cu.yd
--	---------------------------------	--	--	---

Job Name: 25-4212 - Greentree Lane Sewer  
 Job Location: Mt. Washington, KY  
 Contractor: Citgo Waterworks

Plant: 100

Tech: J. Horsley - F

12/10/2025 2:25:46 PM

PC: C. Goff



**Structure ID: A4**

**P1 MH060BA42**

**MH BASE w/DROP NO STEPS T/n**

P5)	24" - CASTING HEIGHT - 4.75"	0 lb
P4)	48" - ECC CONE w/ 24" HOLE NO STEP F/G - 30"	2050 lb
P3)	60" - MH Transition Slab 48" Hole T/G - 13"	1928 lb
P2)	60" - MH RISER w/DROP Custom Ht T/G - 48"	4949 lb
P1)	60" - MH BASE w/DROP NO STEPS T/n - 42"	6665 lb
1)	JOINT WRAP - 0.065"x6"x50' CONSEAL CS212	0 lb
1)	JOINT WRAP PRIMER - CONSEAL CS-75 (1 gal.)	0 lb
1)	60" - MH INVERT CHANNEL - FULL HEIGHT	2692 lb
1)	SPECIAL Internal Coating - Carboline 300M	0 lb
1)	SECONDARY POUR - Add Drop to Base	2150 lb
1)	SECONDARY POUR - Add Drop to Riser	2064 lb
2)	60" - Conseal CS-102 1.00" (Double)	0 lb
1)	48" - Conseal CS-102 1.00" (Double)	0 lb
2)	Kor-N-Seal2 - S206-22	13 lb
1)	Drop Tee - 12" PVC	0 lb
1)	Drop Elbow - 12" PVC	0 lb
	196.07 SqFt) Carboline Bitumastic 300M [INT]	0 lb
	Structure Total:	22511 lb

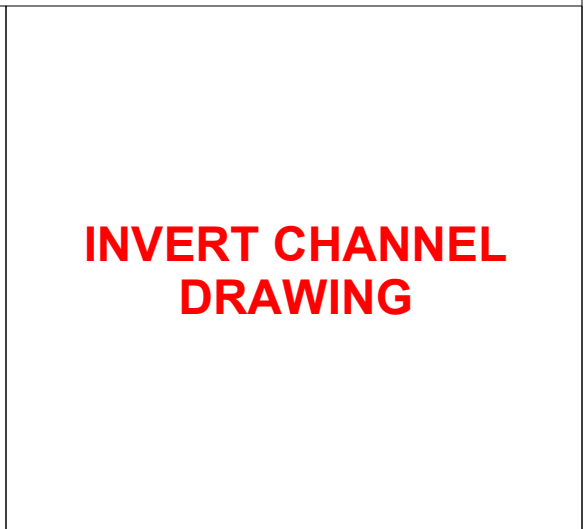
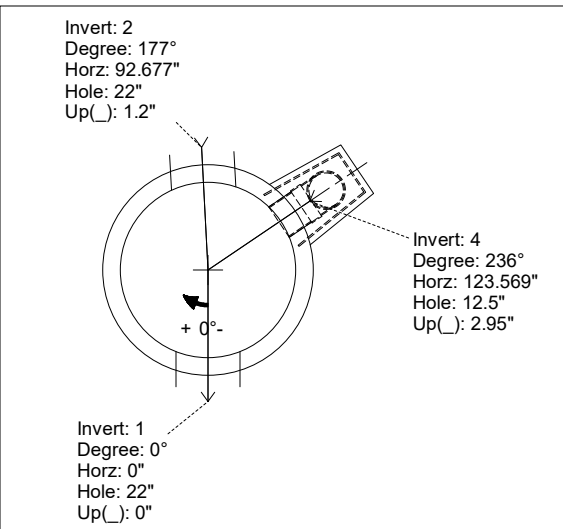
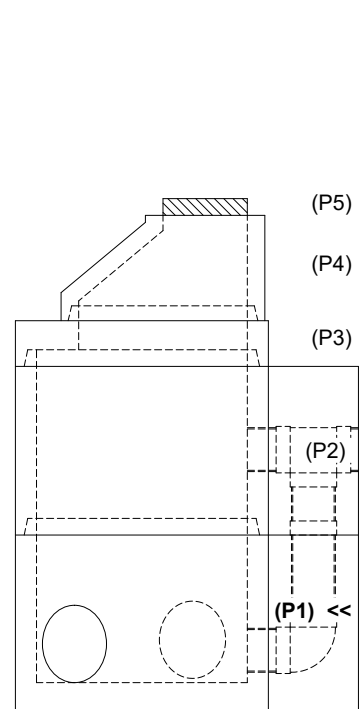
- Structure Notes:**
- PER ASTM C-478 SPECIFICATIONS
  - CONCRETE: 4,000 PSI AT 28 DAYS
  - REINFORCEMENT: PER ASTM A615
  - NO STEPS
  - CARBOLINE 300M INTERNAL COATING REQUIRED
  - INVERT CHANNEL REQUIRED
  - CASTING SUPPLIED BY OTHERS
  - EXTERNAL DROP AT INVERTS 3 & 4 SUPPLIED BY ICAST

Rim: 669.83' Rim to Invert: 11.36' Slack: 0.57" Sump: 2" Step Position:

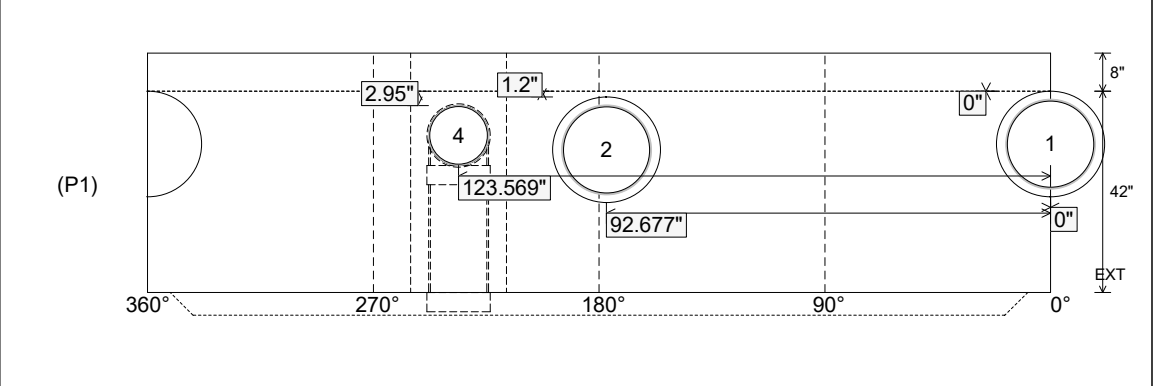
Position	Elev	Angle	Ext. (cw)	Pipe	Pipe OD	Connector	Hole	Horz Size	Up ( _ )	Offset
Invert 1	658.47'	0°	0"	18" PVC SDR35	18.75"	Kor-N-Seal2 S206-22	22"	22.525"	0"	0"
Invert 2	658.57'	177°	111.212"	18" PVC SDR35	18.75"	Kor-N-Seal2 S206-22	22"	22.525"	1.2"	0"
Invert 3										
Invert 4	658.57'	236°	148.283"	12" PVC SDR35	12.5"	Drop Elbow 12" PVC	12.5"	12.592"	2.95"	0"
Invert 5										
Invert 6										
Invert 7										
Invert 8										

RIGHT-SIDE UP VIEW (int. dimensions)

UPSIDE-DOWN VIEW (int. dimensions)



INSIDE WALL DIMENSIONS



Coating (Int): Carboline Bitumastic 300M Coating (Ext):	Seam Up: Tongue Seam Dn: n/a	Wall Thickness: 6" Floor Height: 8"	Height (Int): 42" Height (Ext): 50"	Weight (Net): 6665 lb Volume (Net): 1.7cu.yd
--	---------------------------------	--	--	---