

Job Name: 25-4212 - Greentree Lane Sewer
 Job Location: Mt. Washington, KY
 Contractor: Citgo Waterworks

Plant: 100

Tech: J. Horsley - F

12/10/2025 2:25:54 PM

PC: C. Goff



Structure ID: A11

P1 MH060BA48

MH BASE NO STEP T/n

- P4) 24" - CASTING HEIGHT - 4.75"
- P3) 48" - ECC CONE w/ 24" HOLE NO STEP F/G - 24"
- P2) 60" - MH Transition Slab 48" Hole T/G - 13"
- P1) 60" - MH BASE NO STEP T/n - 48"
- 1) JOINT WRAP - 0.065"x6"x50' CONSEAL CS212
- 1) JOINT WRAP PRIMER - CONSEAL CS-75 (1 gal.)
- 1) 60" - MH INVERT CHANNEL - FULL HEIGHT
- 1) SPECIAL Internal Coating - Carboline 300M
- 1) 60" - Conseal CS-102 1.00" (Double)
- 1) 48" - Conseal CS-102 1.00" (Double)
- 1) Kor-N-Seal2 - S206-22
- 1) PSX - 12-06 NYLO
- 1) PSX - 14M DD
- 136.79 SqFt) Carboline Bitumastic 300M [INT]

- 0 lb
- 1550 lb
- 1928 lb
- 7413 lb
- 0 lb
- 0 lb
- 2692 lb
- 0 lb
- 0 lb
- 0 lb
- 6 lb
- 8 lb
- 8 lb
- 0 lb

- Structure Notes:**
1. PER ASTM C-478 SPECIFICATIONS
 2. CONCRETE: 4,000 PSI AT 28 DAYS
 3. REINFORCEMENT: PER ASTM A615
 4. NO STEPS
 5. CARBOLINE 300M INTERNAL COATING REQUIRED
 6. INVERT CHANNEL REQUIRED
 7. CASTING SUPPLIED BY OTHERS

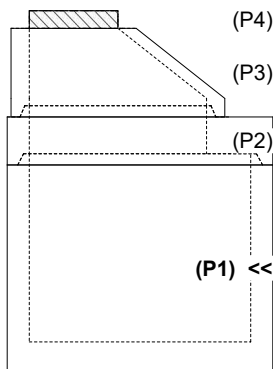
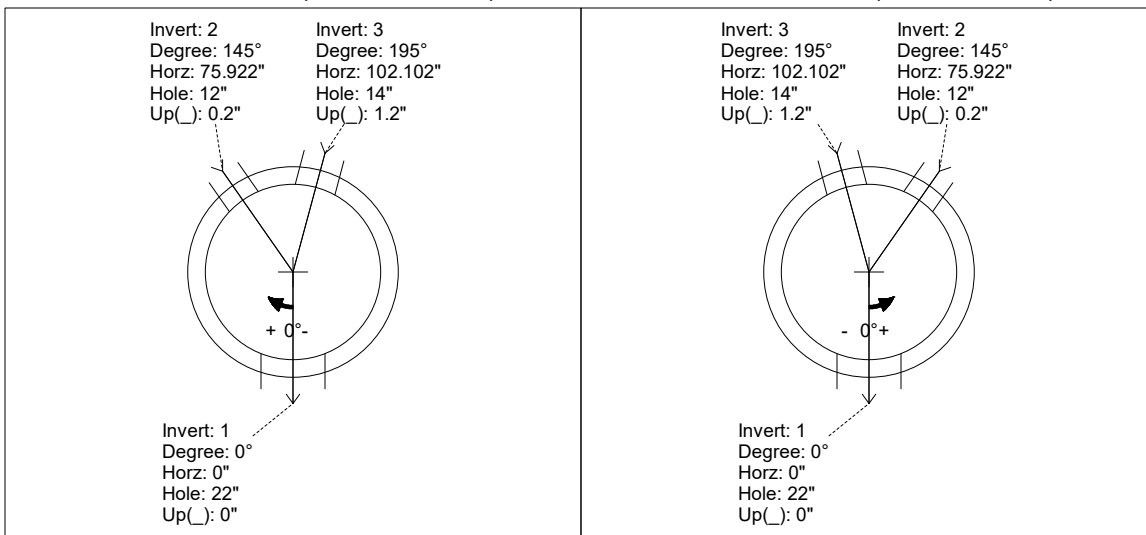
Structure Total: 13605 lb

Rim: 696.33' Rim to Invert: 7.39' Slack: 0.93" Sump: 2" Step Position:

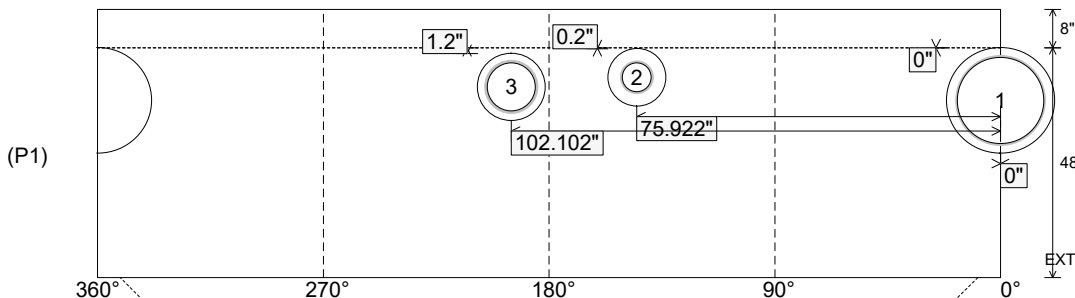
Position	Elev	Angle	Ext. (cw)	Pipe	Pipe OD	Connector	Hole	Horz Size	Up ()	Offset
Invert 1	688.94'	0°	0"	18" PVC SDR35	18.75"	Kor-N-Seal2 S206-22	22"	22.525"	0"	0"
Invert 2	689.04'	145°	91.106"	6" DI	6.875"	PSX 12-06 NYLO	12"	12.081"	0.2"	0"
Invert 3	689.04'	195°	122.522"	10" DI	11.1"	PSX 14M DD	14"	14.13"	1.2"	0"
Invert 4										
Invert 5										
Invert 6										
Invert 7										
Invert 8										

RIGHT-SIDE UP VIEW (int. dimensions)

UPSIDE-DOWN VIEW (int. dimensions)



INSIDE WALL DIMENSIONS



Coating (Int): Carboline Bitumastic 300M
 Coating (Ext):

Seam Up: Tongue
 Seam Dn: n/a

Wall Thickness: 6"
 Floor Height: 8"

Height (Int): 48"
 Height (Ext): 56"

Weight (Net): 7413 lb
 Volume (Net): 1.89cu.yd

Structure ID: A11

P1 MH060BA48

MH BASE NO STEP T/n

P4) 24" - CASTING HEIGHT - 4.75" P3) 48" - ECC CONE w/ 24" HOLE NO STEP F/G - 24" P2) 60" - MH Transition Slab 48" Hole T/G - 13" P1) 60" - MH BASE NO STEP T/n - 48" 1) JOINT WRAP - 0.065"x6"x50' CONSEAL CS212 1) JOINT WRAP PRIMER - CONSEAL CS-75 (1 gal.) 1) 60" - MH INVERT CHANNEL - FULL HEIGHT 1) SPECIAL Internal Coating - Carboline 300M 1) 60" - Conseal CS-102 1.00" (Double) 1) 48" - Conseal CS-102 1.00" (Double) 1) Kor-N-Seal2 - S206-22 1) PSX - 12-06 NYLO 1) PSX - 14M DD 136.79 SqFt) Carboline Bitumastic 300M [INT]	<table style="width:100%; border-collapse: collapse;"> <tr><td style="text-align: right;">0 lb</td><td style="text-align: left;">1550 lb</td></tr> <tr><td style="text-align: right;">1550 lb</td><td style="text-align: left;">1928 lb</td></tr> <tr><td style="text-align: right;">1928 lb</td><td style="text-align: left;">7413 lb</td></tr> <tr><td style="text-align: right;">7413 lb</td><td style="text-align: left;">0 lb</td></tr> <tr><td style="text-align: right;">0 lb</td><td style="text-align: left;">0 lb</td></tr> <tr><td style="text-align: right;">0 lb</td><td style="text-align: left;">2692 lb</td></tr> <tr><td style="text-align: right;">2692 lb</td><td style="text-align: left;">0 lb</td></tr> <tr><td style="text-align: right;">0 lb</td><td style="text-align: left;">0 lb</td></tr> <tr><td style="text-align: right;">0 lb</td><td style="text-align: left;">0 lb</td></tr> <tr><td style="text-align: right;">0 lb</td><td style="text-align: left;">6 lb</td></tr> <tr><td style="text-align: right;">6 lb</td><td style="text-align: left;">8 lb</td></tr> <tr><td style="text-align: right;">8 lb</td><td style="text-align: left;">8 lb</td></tr> <tr><td style="text-align: right;">8 lb</td><td style="text-align: left;">0 lb</td></tr> <tr><td style="text-align: right;">0 lb</td><td style="text-align: left;">-----</td></tr> <tr><td style="text-align: right;">Structure Total:</td><td style="text-align: left;">13605 lb</td></tr> </table>	0 lb	1550 lb	1550 lb	1928 lb	1928 lb	7413 lb	7413 lb	0 lb	0 lb	0 lb	0 lb	2692 lb	2692 lb	0 lb	0 lb	0 lb	0 lb	0 lb	0 lb	6 lb	6 lb	8 lb	8 lb	8 lb	8 lb	0 lb	0 lb	-----	Structure Total:	13605 lb
0 lb	1550 lb																														
1550 lb	1928 lb																														
1928 lb	7413 lb																														
7413 lb	0 lb																														
0 lb	0 lb																														
0 lb	2692 lb																														
2692 lb	0 lb																														
0 lb	0 lb																														
0 lb	0 lb																														
0 lb	6 lb																														
6 lb	8 lb																														
8 lb	8 lb																														
8 lb	0 lb																														
0 lb	-----																														
Structure Total:	13605 lb																														

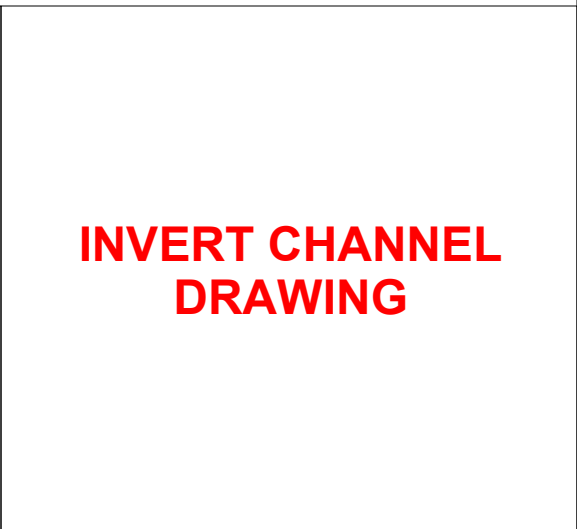
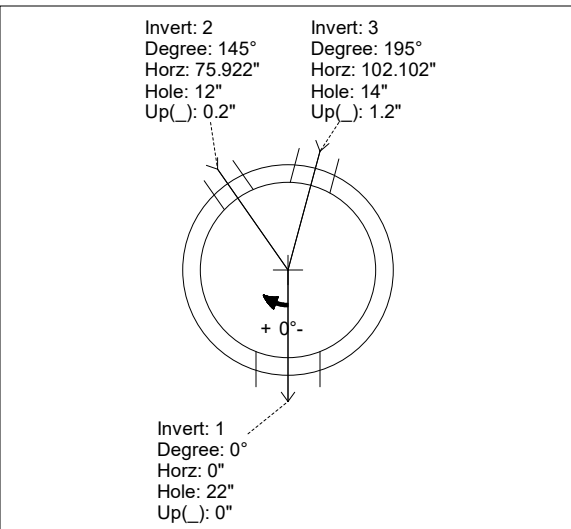
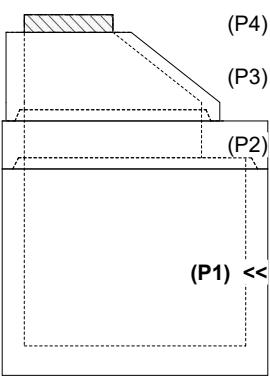
Structure Notes:

1. PER ASTM C-478 SPECIFICATIONS
2. CONCRETE: 4,000 PSI AT 28 DAYS
3. REINFORCEMENT: PER ASTM A615
4. NO STEPS
5. CARBOLINE 300M INTERNAL COATING REQUIRED
6. INVERT CHANNEL REQUIRED
7. CASTING SUPPLIED BY OTHERS

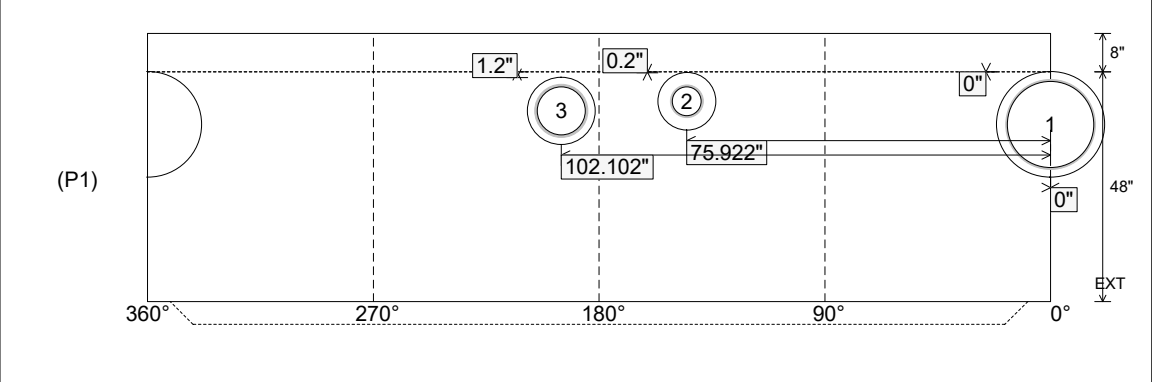
Rim: 696.33' Rim to Invert: 7.39' Slack: 0.93" Sump: 2" Step Position:

Position	Elev	Angle	Ext. (cw)	Pipe	Pipe OD	Connector	Hole	Horz Size	Up ()	Offset
Invert 1	688.94'	0°	0"	18" PVC SDR35	18.75"	Kor-N-Seal2 S206-22	22"	22.525"	0"	0"
Invert 2	689.04'	145°	91.106"	6" DI	6.875"	PSX 12-06 NYLO	12"	12.081"	0.2"	0"
Invert 3	689.04'	195°	122.522"	10" DI	11.1"	PSX 14M DD	14"	14.13"	1.2"	0"
Invert 4										
Invert 5										
Invert 6										
Invert 7										
Invert 8										

RIGHT-SIDE UP VIEW (int. dimensions) UPSIDE-DOWN VIEW (int. dimensions)



INSIDE WALL DIMENSIONS



Coating (Int): Carboline Bitumastic 300M Coating (Ext):	Seam Up: Tongue Seam Dn: n/a	Wall Thickness: 6" Floor Height: 8"	Height (Int): 48" Height (Ext): 56"	Weight (Net): 7413 lb Volume (Net): 1.89cu.yd
--	---------------------------------	--	--	--