



**Structure ID: A10**

**P1 MH060BAVF**

**MH BASE Custom Ht T/n**

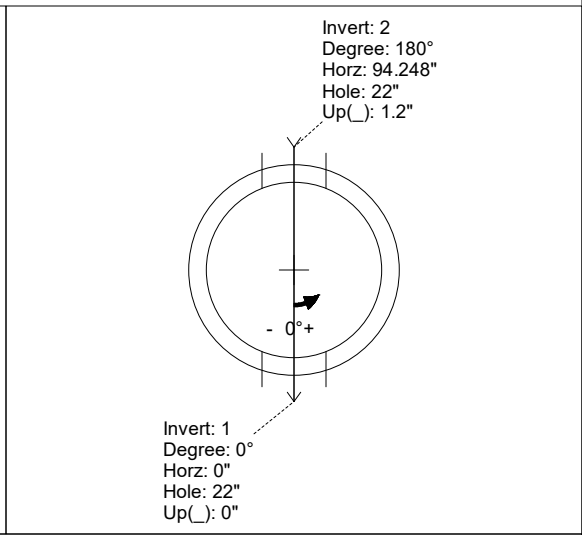
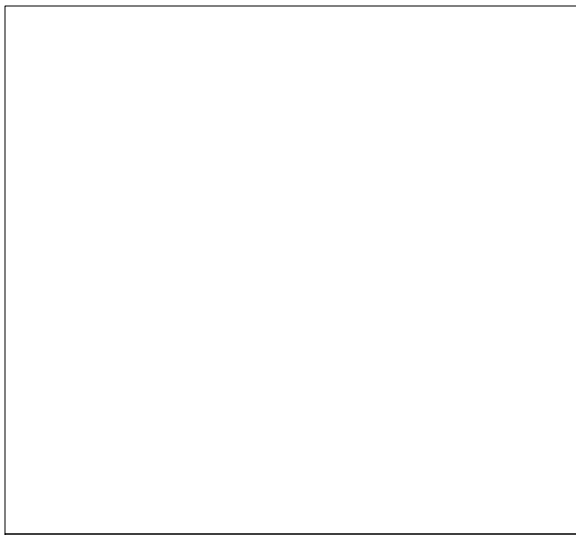
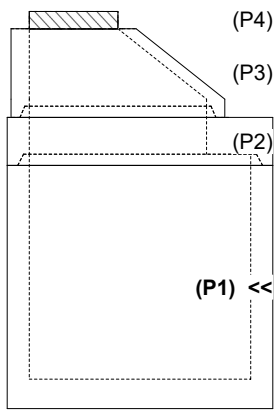
P4) 24" - CASTING HEIGHT - 4.75" P3) 48" - ECC CONE w/ 24" HOLE NO STEP F/G - 24" P2) 60" - MH Transition Slab 48" Hole T/G - 13" P1) 60" - MH BASE Custom Ht T/n - 58" 1) JOINT WRAP - 0.065"x6"x50' CONSEAL CS212 1) JOINT WRAP PRIMER - CONSEAL CS-75 (1 gal.) 1) 60" - MH INVERT CHANNEL - FULL HEIGHT 1) SPECIAL Internal Coating - Carboline 300M 1) 60" - Conseal CS-102 1.00" (Double) 1) 48" - Conseal CS-102 1.00" (Double) 2) Kor-N-Seal2 - S206-22 149.88 SqFt) Carboline Bitumastic 300M [INT]	0 lb 1550 lb 1928 lb 8397 lb 0 lb 0 lb 2692 lb 0 lb 0 lb 0 lb 0 lb 13 lb 0 lb	<b>Structure Notes:</b> 1. PER ASTM C-478 SPECIFICATIONS 2. CONCRETE: 4,000 PSI AT 28 DAYS 3. REINFORCEMENT: PER ASTM A615 4. NO STEPS 5. CARBOLINE 300M INTERNAL COATING REQUIRED 6. INVERT CHANNEL REQUIRED 7. CASTING SUPPLIED BY OTHERS
Structure Total: 14580 lb		

Rim: 694.04'    Rim to Invert: 8.17'    Slack: 0.29"    Sump: 2"    Step Position:

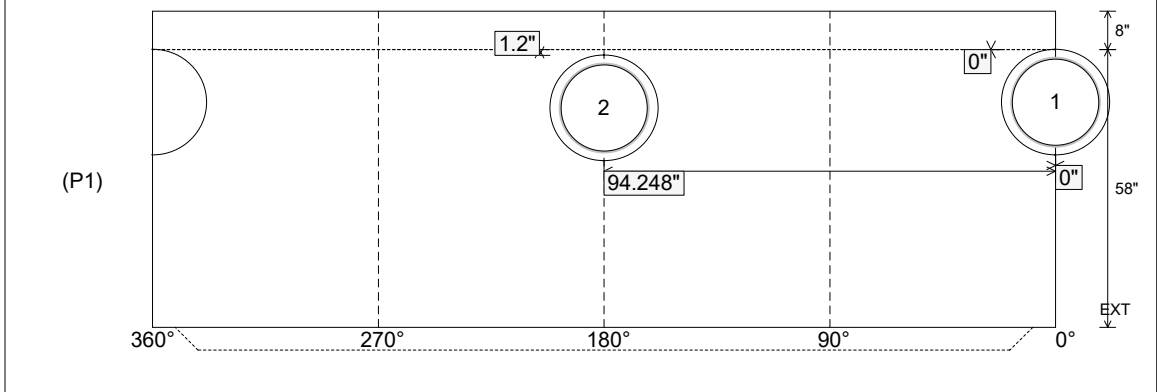
Position	Elev	Angle	Ext. (cw)	Pipe	Pipe OD	Connector	Hole	Horz Size	Up ( )	Offset
Invert 1	685.87'	0°	0"	18" PVC SDR35	18.75"	Kor-N-Seal2 S206-22	22"	22.525"	0"	0"
Invert 2	685.97'	180°	113.097"	18" PVC SDR35	18.75"	Kor-N-Seal2 S206-22	22"	22.525"	1.2"	0"
Invert 3										
Invert 4										
Invert 5										
Invert 6										
Invert 7										
Invert 8										

RIGHT-SIDE UP VIEW (int. dimensions)

UPSIDE-DOWN VIEW (int. dimensions)



INSIDE WALL DIMENSIONS



Coating (Int): Carboline Bitumastic 300M Coating (Ext):	Seam Up: Tongue Seam Dn: n/a	Wall Thickness: 6" Floor Height: 8"	Height (Int): 58" Height (Ext): 66"	Weight (Net): 8397 lb Volume (Net): 2.14cu.yd
--	---------------------------------	--	--	--

**Structure ID: A10**

**P1 MH060BAVF**

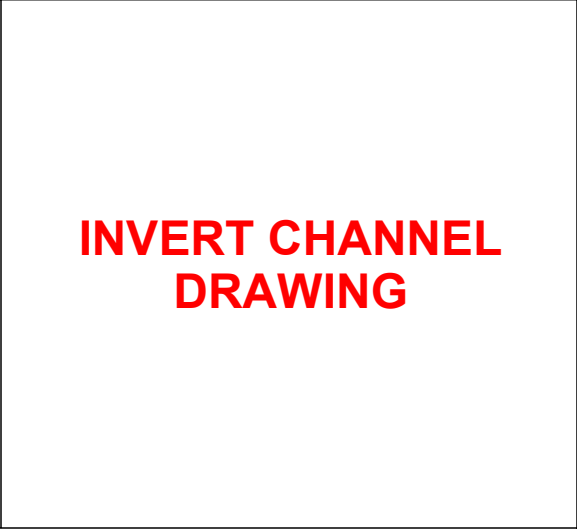
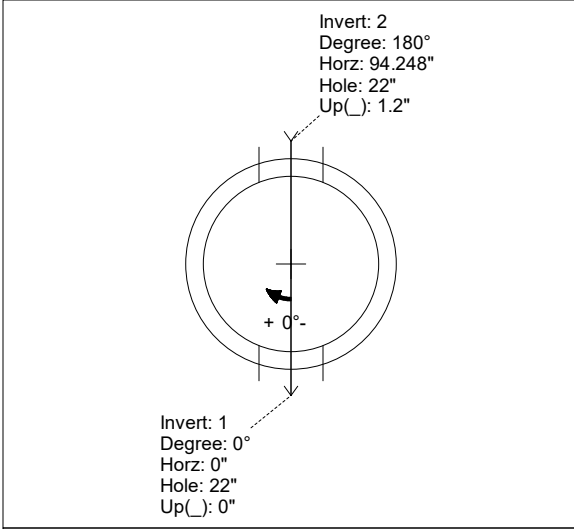
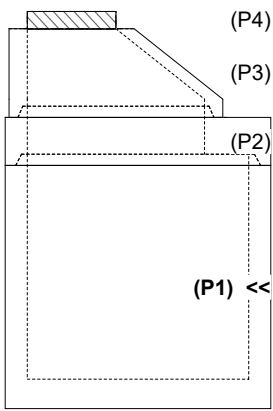
**MH BASE Custom Ht T/n**

P4) 24" - CASTING HEIGHT - 4.75" P3) 48" - ECC CONE w/ 24" HOLE NO STEP F/G - 24" P2) 60" - MH Transition Slab 48" Hole T/G - 13" P1) 60" - MH BASE Custom Ht T/n - 58" 1) JOINT WRAP - 0.065"x6"x50' CONSEAL CS212 1) JOINT WRAP PRIMER - CONSEAL CS-75 (1 gal.) 1) 60" - MH INVERT CHANNEL - FULL HEIGHT 1) SPECIAL Internal Coating - Carboline 300M 1) 60" - Conseal CS-102 1.00" (Double) 1) 48" - Conseal CS-102 1.00" (Double) 2) Kor-N-Seal2 - S206-22 149.88 SqFt) Carboline Bitumastic 300M [INT]	0 lb 1550 lb 1928 lb 8397 lb 0 lb 0 lb 2692 lb 0 lb 0 lb 0 lb 0 lb 13 lb 0 lb	<b>Structure Notes:</b> 1. PER ASTM C-478 SPECIFICATIONS 2. CONCRETE: 4,000 PSI AT 28 DAYS 3. REINFORCEMENT: PER ASTM A615 4. NO STEPS 5. CARBOLINE 300M INTERNAL COATING REQUIRED 6. INVERT CHANNEL REQUIRED 7. CASTING SUPPLIED BY OTHERS
Structure Total:		14580 lb

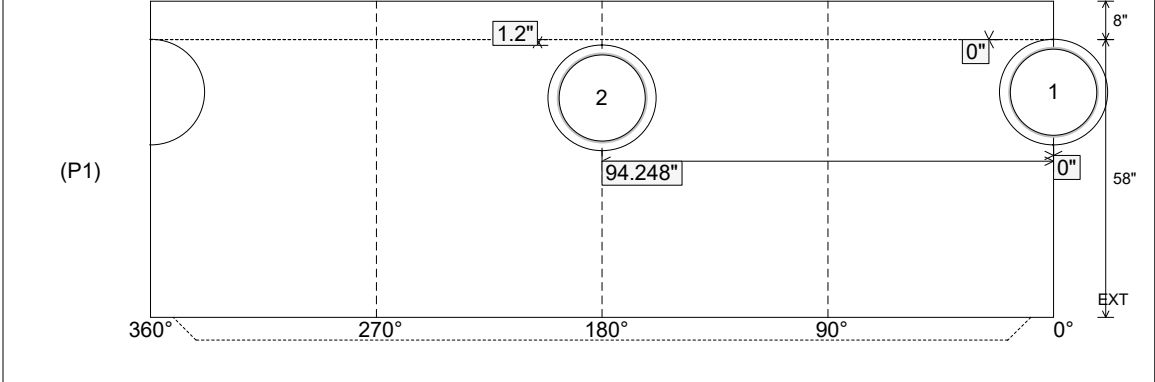
Rim: 694.04'    Rim to Invert: 8.17'    Slack: 0.29"    Sump: 2"    Step Position:

Position	Elev	Angle	Ext. (cw)	Pipe	Pipe OD	Connector	Hole	Horz Size	Up (↓)	Offset
Invert 1	685.87'	0°	0"	18" PVC SDR35	18.75"	Kor-N-Seal2 S206-22	22"	22.525"	0"	0"
Invert 2	685.97'	180°	113.097"	18" PVC SDR35	18.75"	Kor-N-Seal2 S206-22	22"	22.525"	1.2"	0"
Invert 3										
Invert 4										
Invert 5										
Invert 6										
Invert 7										
Invert 8										

RIGHT-SIDE UP VIEW (int. dimensions)      UPSIDE-DOWN VIEW (int. dimenions)



INSIDE WALL DIMENSIONS



Coating (Int): Carboline Bitumastic 300M Coating (Ext):	Seam Up: Tongue Seam Dn: n/a	Wall Thickness: 6" Floor Height: 8"	Height (Int): 58" Height (Ext): 66"	Weight (Net): 8397 lb Volume (Net): 2.14cu.yd
--	---------------------------------	--	--	--