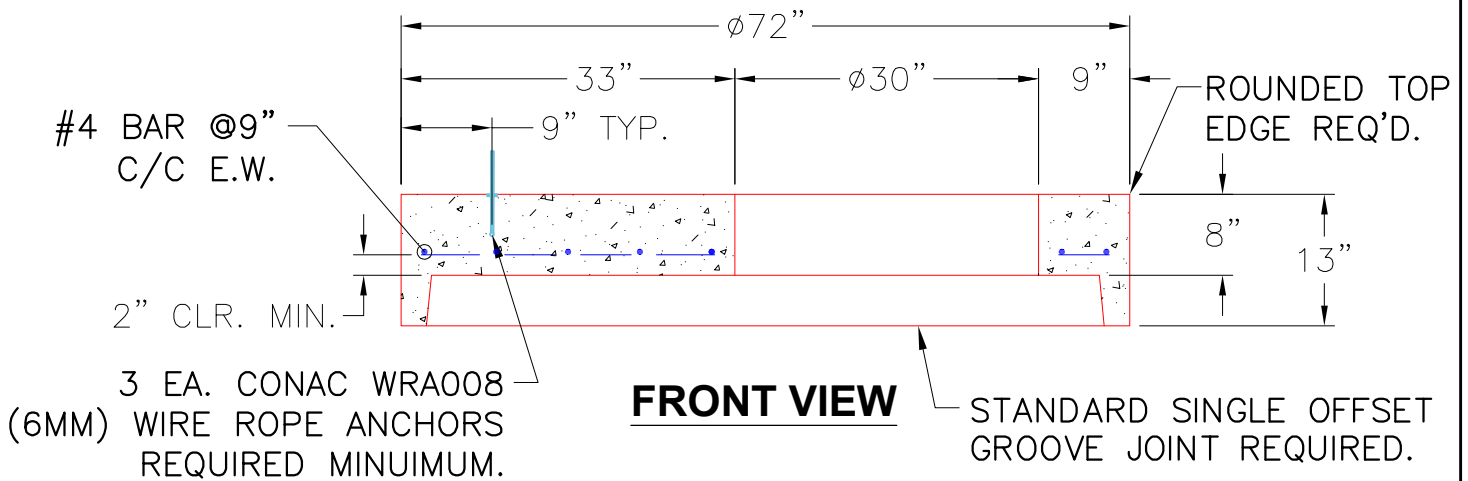
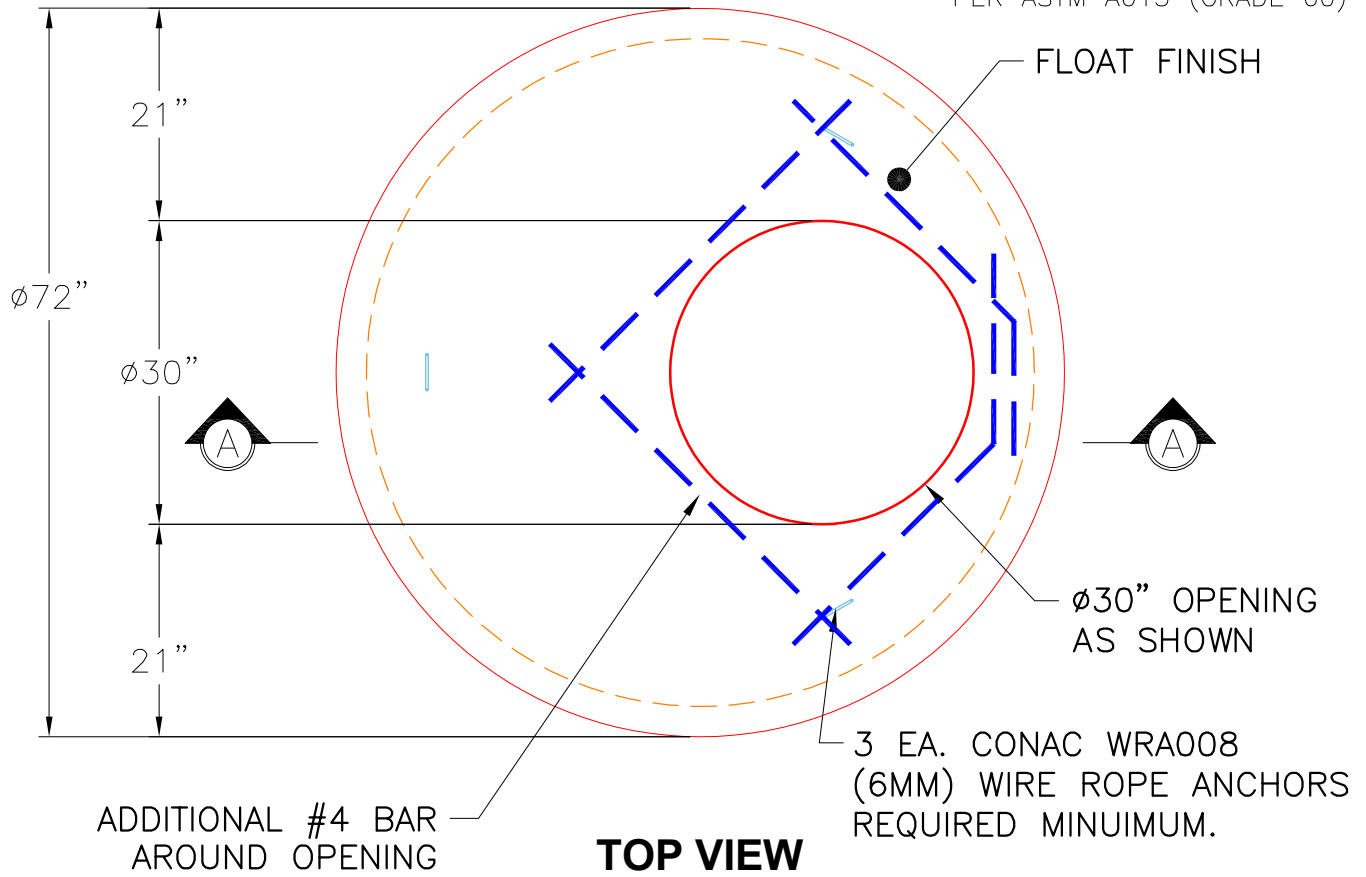



THIS DRAWING IS INTENDED TO BE PRINTED IN COLOR.

GENERAL NOTES:

1. MANUFACTURED TO ASTM C-478 (LATEST REVISION).
2. CONCRETE 5,000 PSI AT 28 DAYS.
3. REINFORCING: #4 @ 9" O.C. E.W. (GRADE 60) PER ASTM A615 (GRADE 60)



PRODUCTION WORK ORDER		PRODUCT I.D.: MH060LD13-30ECC	DESCRIPTION: 60"ø TOP SLAB, 13" HEIGHT W/ ø30" ECCENTRIC OPENING
	QUALITY CONTROL CHECKLIST	PRODUCT VIEW: RIGHT SIDE UP	CUSTOMER: CONTECH ENGINEERING SOLUTIONS
	<input type="checkbox"/> ALL DIMENSIONS CORRECT.	PLANT: BEAVER DAM, KY.	PROJECT: 830265 GLENN CDJR
	<input type="checkbox"/> LIFTING ANCHORS INSTALLED.	WEIGHT: 2,589 LBS.	STRUCTURE: 10-CS-5
	<input type="checkbox"/> HOLE LOCATION CORRECT.	TOP SECTION JOINT: N/A	QUOTE/SALES ORDER NO: 25-3675
	<input type="checkbox"/> REINFORCING CORRECT.	BASE SECTION JOINT: GROOVE	PC: T. SEKULA
	<input type="checkbox"/> FLOAT FINISH ON SLAB SURFACE.	QC CHECK INITIALS:	DRAWING: J. COPPAGE
<input type="checkbox"/> OUTSIDE TOP EDGE TROWELLED.		DATE: 10/27/25	SCALE: NTS
<input type="checkbox"/> GROOVE JOINT INSTALLED.			PG. 1 of 1