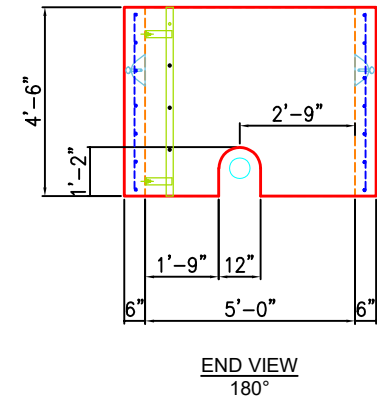
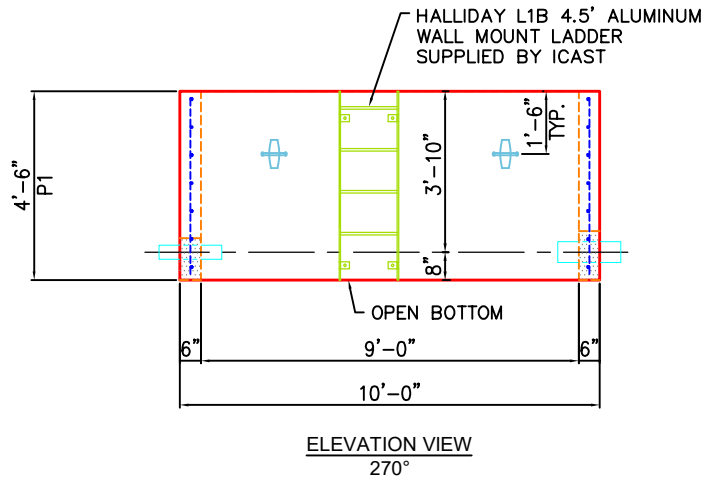
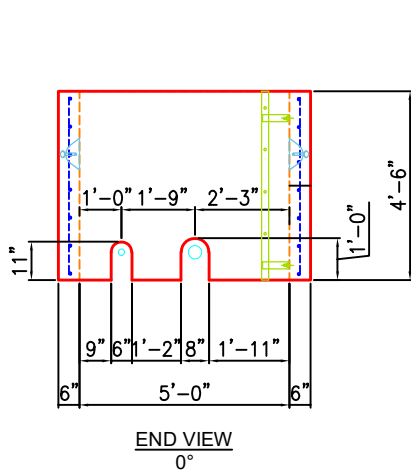
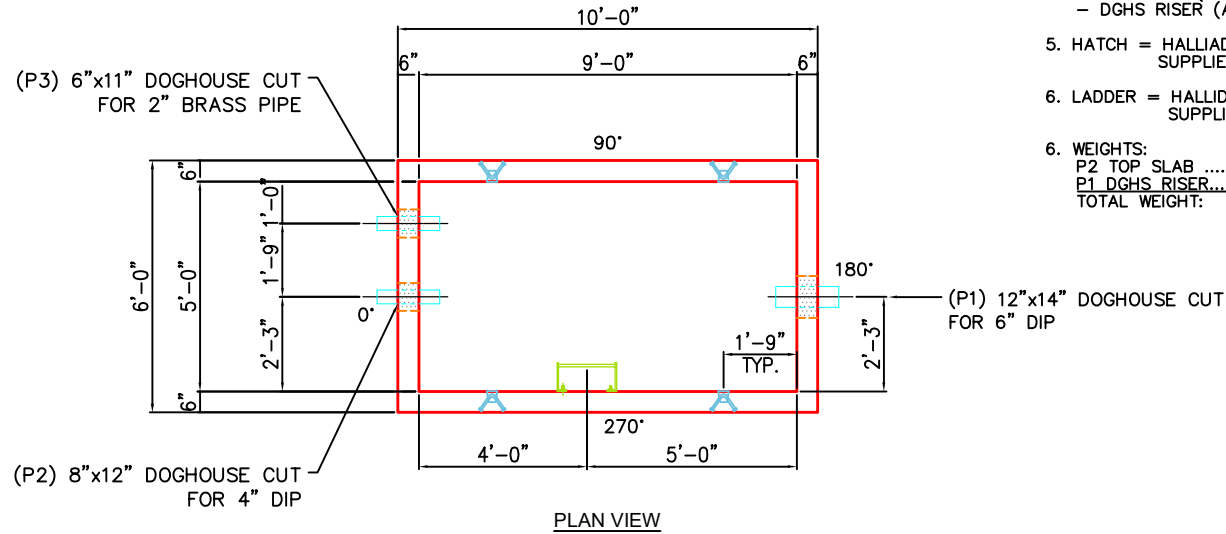


**NOTES:**

1. MANUFACTURED PER ASTM C913 SPECIFICATIONS.
2. CONCRETE = 5,000 PSI AT 28 DAYS.
3. REINFORCING PER ASTM A615 (GRADE 60).
  - TOP SLAB (As .62) #5 BARS AT 6" C.C.E.W
  - DGHS RISER (As .47) #5 BARS AT 8" C.C.E.W.
5. HATCH = HALLIDAY W2S 72"x48" WITH SKIRT FOR 8" SLAB SUPPLIED BY ICAST.
6. LADDER = HALLIDAY L1B 4.5' ALUMINUM WALL MOUNT. SUPPLIED BY ICAST
6. WEIGHTS:
  - P2 TOP SLAB .....3,655 LBS
  - P1 DGHS RISER.....9,655 LBS
  - TOTAL WEIGHT: 13,310 LBS



**PRODUCTION WORK ORDER**

PRODUCT I.D.: BX060108-06RVF

DESCRIPTION: RISER 60in x 108in 6inW VARIABLE HT



**QUALITY CONTROL CHECKLIST**

- ALL DIMENSIONS CORRECT.
- LIFTERS INSTALLED.
- STEPPED HF CORRECT SIZE.
- REINFORCING CORRECT.
- SURFACE QUALITY ACCEPTABLE.
- EDGES CHAMFERED.
- ALL PATCHWORK ACCEPTABLE.

PRODUCT VIEW: RIGHT-SIDE UP

PLANT: BEAVER DAM, KY.

WEIGHT: 9,655 LBS.

TOP SECTION JOINT: FLAT

BASE SECTION JOINT: FLAT

QC CHECK INITIALS:

CUSTOMER: WARREN COUNTY WATER DISTRICT

PROJECT: RV BLUE COMPASS VAULT

STRUCTURE ID.: METER VAULT (108x60)

SALES ORDER NO: 25-3663

CHECK: B. SMITH

DRAWING: J. HORSLEY

DATE: 11/05/25

SCALE: NTS

PG. 1 of 1

Job Name: 25-3663 RV Blue Compass Vault  
 Job Location: Franklin, KY  
 Contractor: Warren County Water District

Plant: 100  
 11/5/2025 7:01:47 PM

Tech: J.Horsley - A  
 PC: Erica Bradley



**Structure ID: VAULT**

**P2 BX060108-08LD06S**

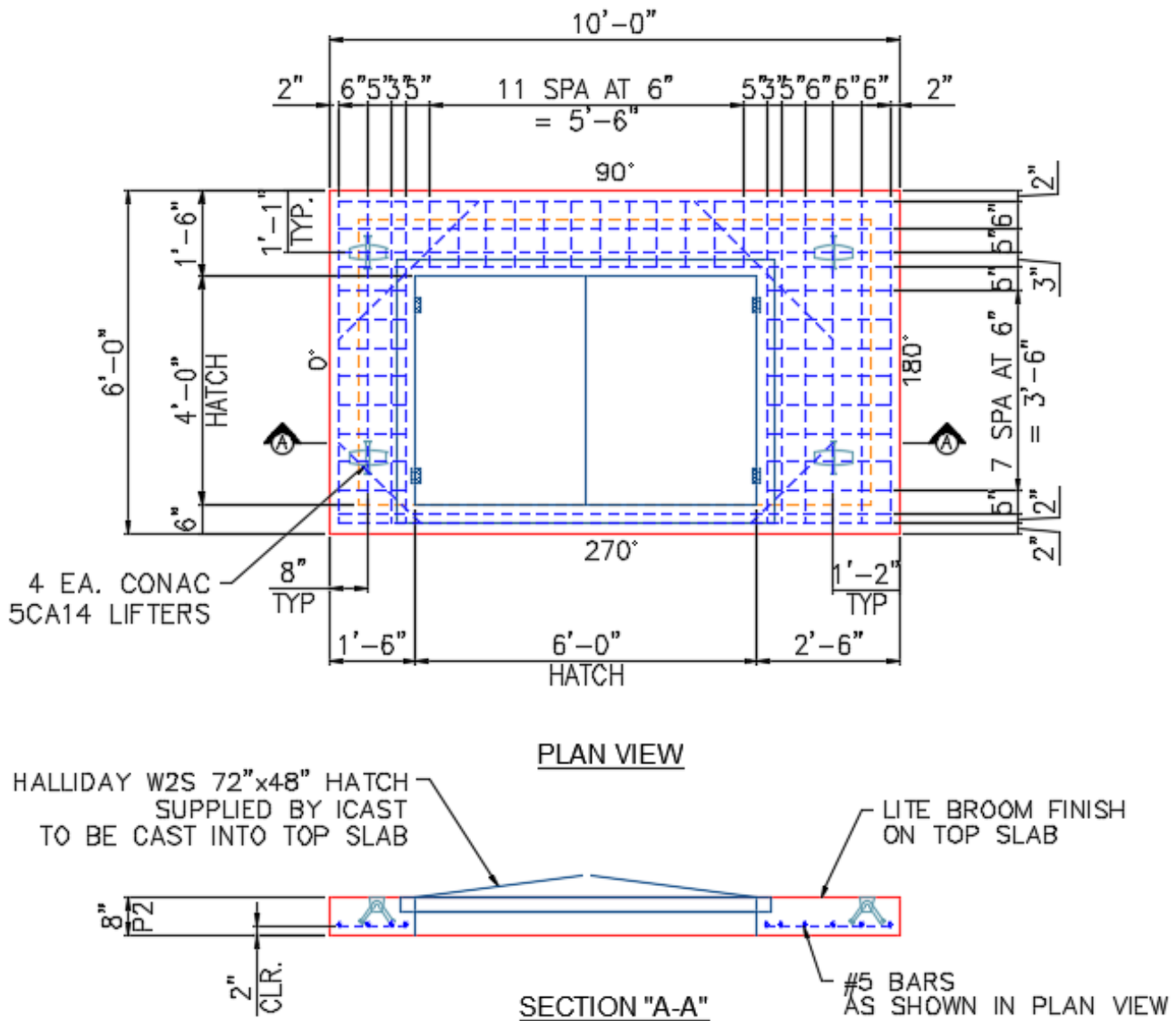
**CB FLAT TOP 6"W SPECIAL (72" x 48" HATCH) F/F**

- P2) 60" x 108" - CB FLAT TOP 6"W SPECIAL (72" x 48" HATCH) F/F - 8"
- P1) 60" x 108" - BOX RISER 6inW, Variable Ht FB F/F - 54"
- 1) HATCH (Alum.) - HALLIDAY W2S 72"x48"
- 1) JOINT WRAP PRIMER - CONSEAL CS-75 (1 gal.)
- 1) JOINT WRAP - 0.065"x6"x50' CONSEAL CS212
- 1) LADDER (Alum.) - HALLIDAY L1B 48in Wall mount ladder
- 1) DOGHOUSE - 12"x12"
- 1) DOGHOUSE - 8"x8"
- 1) DOGHOUSE - 6"x6"

3480 lb  
 9635 lb  
 171 lb  
 0 lb  
 0 lb  
 50 lb  
 0 lb  
 0 lb  
 0 lb  
 0 lb  
 Structure Total: 13336 lb

**Structure Notes:**  
 1. PER ASTM C913 SPECIFICATIONS.  
 2. CONCRETE = 4,000 PSI AT 28 DAYS.  
 3. NO INVERT CHANNEL.

REINFORCING PER ASTM A615 (GRADE 60).  
 - TOP SLAB (As .62) #5 BARS AT 6" C.C.E.W  
 - WALLS (As .47) #5 BARS AT 8" C.C.E.W.



Coating (Int):  
 Coating (Ext):

Seam Up: Flat  
 Seam Dn: Flat

Wall Thickness: 6"

Height (Ext): 8"

Weight (Net): 3480 lb  
 Volume (Net): 0.89cu.yd