

Job Name: 25-3663 RV Blue Compass Vault
 Job Location: Franklin, KY
 Contractor: Warren County Water District

Plant: 100
 11/5/2025 7:01:47 PM

Tech: J.Horsley - A
 PC: Erica Bradley



Structure ID: VAULT

P2 BX060108-08LD06S

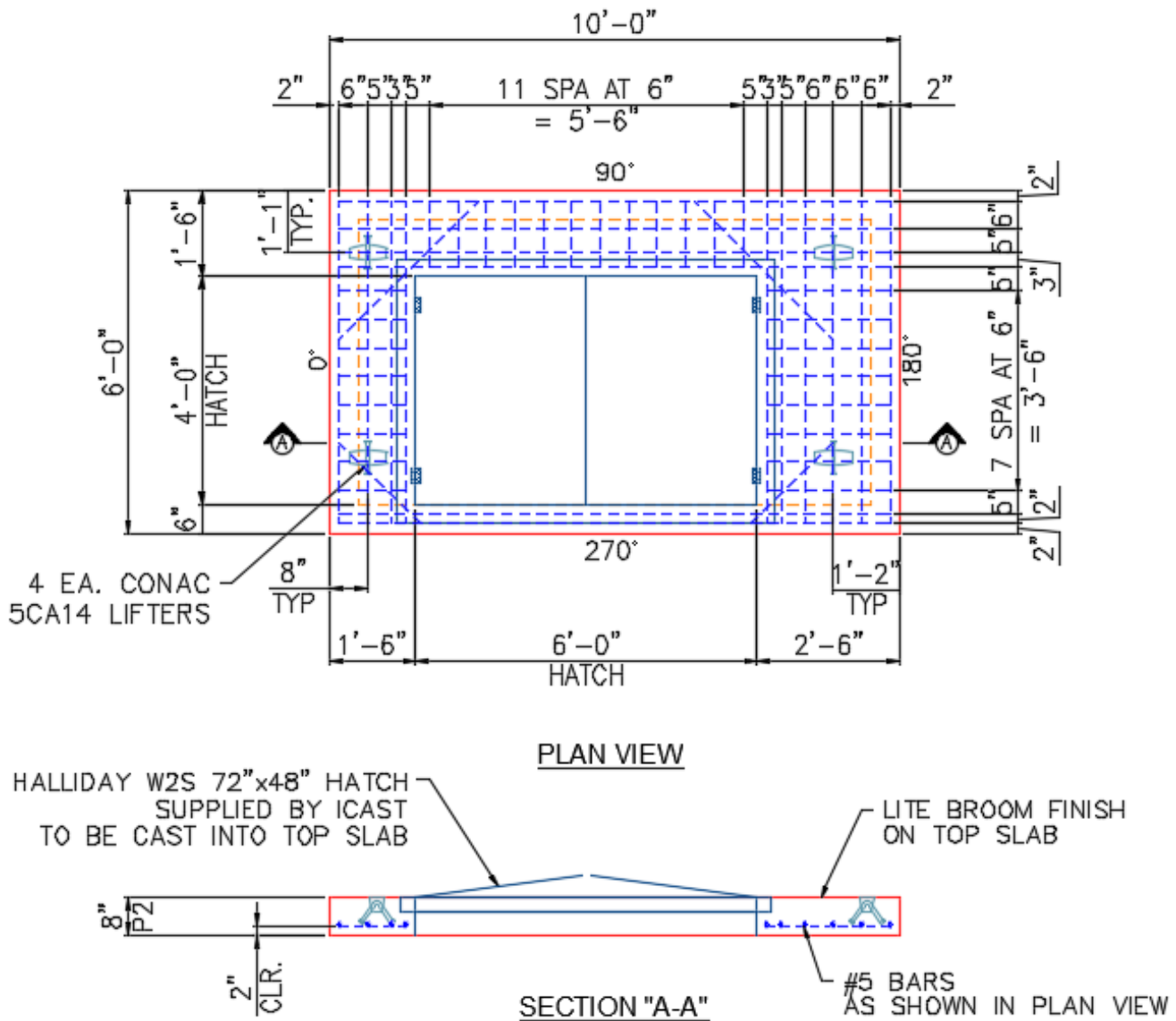
CB FLAT TOP 6"W SPECIAL (72" x 48" HATCH) F/F

- P2) 60" x 108" - CB FLAT TOP 6"W SPECIAL (72" x 48" HATCH) F/F - 8"
- P1) 60" x 108" - BOX RISER 6inW, Variable Ht FB F/F - 54"
- 1) HATCH (Alum.) - HALLIDAY W2S 72"x48"
- 1) JOINT WRAP PRIMER - CONSEAL CS-75 (1 gal.)
- 1) JOINT WRAP - 0.065"x6"x50' CONSEAL CS212
- 1) LADDER (Alum.) - HALLIDAY L1B 48in Wall mount ladder
- 1) DOGHOUSE - 12"x12"
- 1) DOGHOUSE - 8"x8"
- 1) DOGHOUSE - 6"x6"

3480 lb
 9635 lb
 171 lb
 0 lb
 0 lb
 50 lb
 0 lb
 0 lb
 0 lb
 0 lb
 Structure Total: 13336 lb

Structure Notes:
 1. PER ASTM C913 SPECIFICATIONS.
 2. CONCRETE = 4,000 PSI AT 28 DAYS.
 3. NO INVERT CHANNEL.

REINFORCING PER ASTM A615 (GRADE 60).
 - TOP SLAB (As .62) #5 BARS AT 6" C.C.E.W
 - WALLS (As .47) #5 BARS AT 8" C.C.E.W.



Coating (Int): Coating (Ext):	Seam Up: Flat Seam Dn: Flat	Wall Thickness: 6"	Height (Ext): 8"	Weight (Net): 3480 lb Volume (Net): 0.89cu.yd
----------------------------------	--------------------------------	--------------------	------------------	--