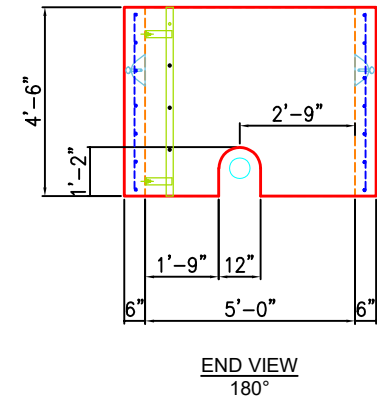
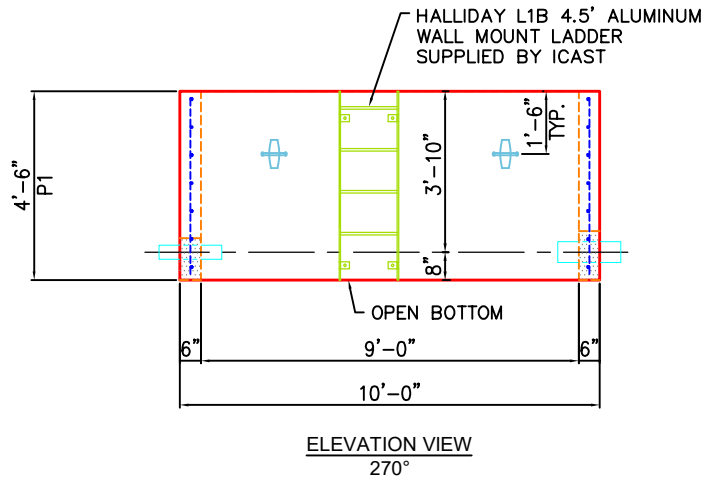
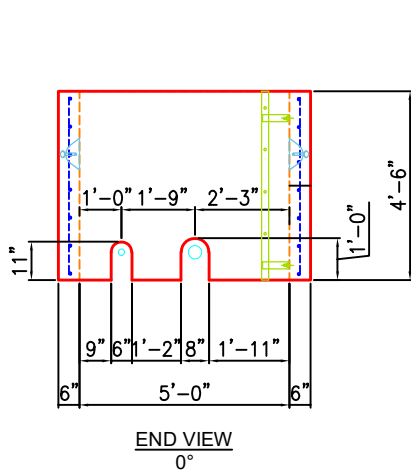
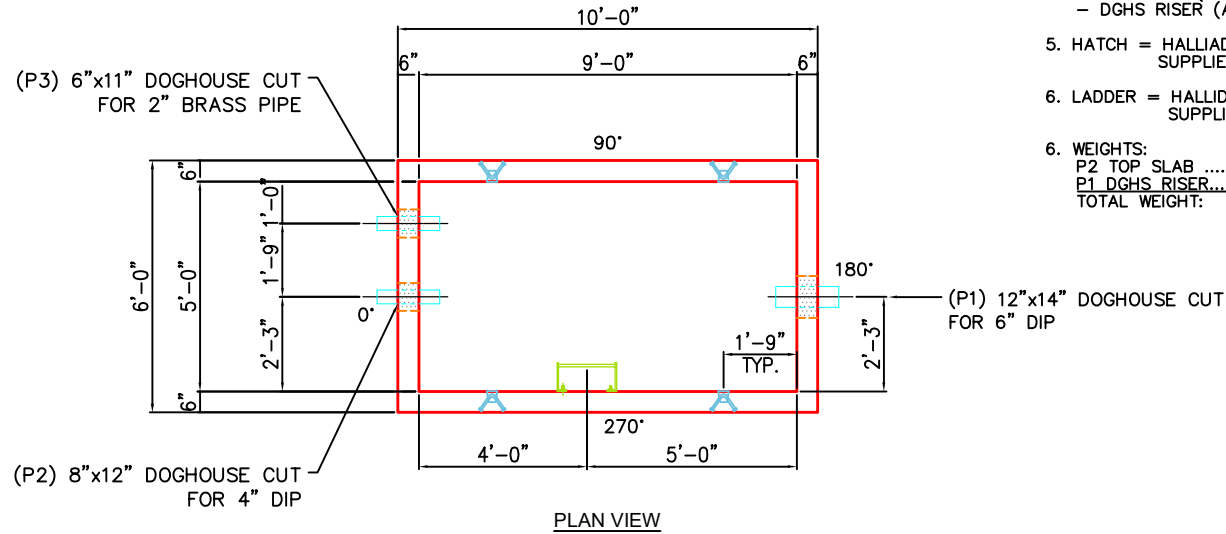


NOTES:

1. MANUFACTURED PER ASTM C913 SPECIFICATIONS.
2. CONCRETE = 5,000 PSI AT 28 DAYS.
3. REINFORCING PER ASTM A615 (GRADE 60).
 - TOP SLAB (As .62) #5 BARS AT 6" C.C.E.W
 - DGHS RISER (As .47) #5 BARS AT 8" C.C.E.W.
5. HATCH = HALLIDAY W2S 72"x48" WITH SKIRT FOR 8" SLAB SUPPLIED BY ICAST.
6. LADDER = HALLIDAY L1B 4.5' ALUMINUM WALL MOUNT. SUPPLIED BY ICAST.
6. WEIGHTS:
 - P2 TOP SLAB3,655 LBS
 - P1 DGHS RISER.....9,655 LBS
 - TOTAL WEIGHT: 13,310 LBS



PRODUCTION WORK ORDER

PRODUCT I.D.: BX060108-06RVF

DESCRIPTION: RISER 60in x 108in 6inW VARIABLE HT



QUALITY CONTROL CHECKLIST

- ALL DIMENSIONS CORRECT.
- LIFTERS INSTALLED.
- STEPPED HF CORRECT SIZE.
- REINFORCING CORRECT.
- SURFACE QUALITY ACCEPTABLE.
- EDGES CHAMFERED.
- ALL PATCHWORK ACCEPTABLE.

PRODUCT VIEW: RIGHT-SIDE UP

CUSTOMER: WARREN COUNTY WATER DISTRICT

PLANT: BEAVER DAM, KY.

PROJECT: RV BLUE COMPASS VAULT

WEIGHT: 9,655 LBS.

STRUCTURE ID.: METER VAULT (108x60)

TOP SECTION JOINT: FLAT

SALES ORDER NO: 25-3663

BASE SECTION JOINT: FLAT

CHECK: B. SMITH

DRAWING: J. HORSLEY

QC CHECK INITIALS:

DATE: 11/05/25

SCALE: NTS

PG. 1 of 1