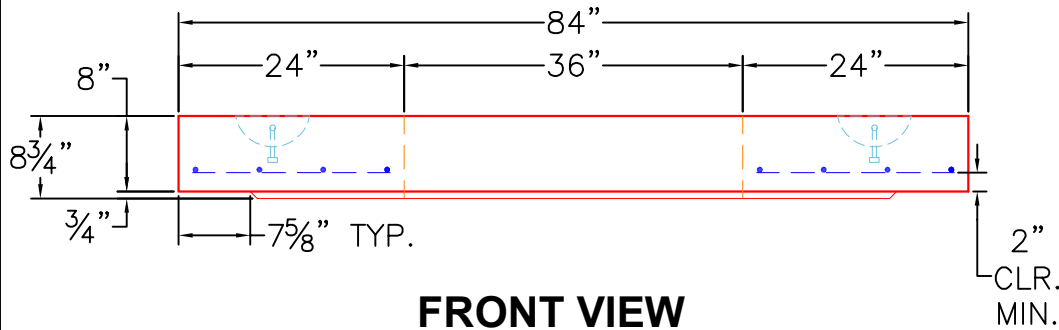


TOP VIEW

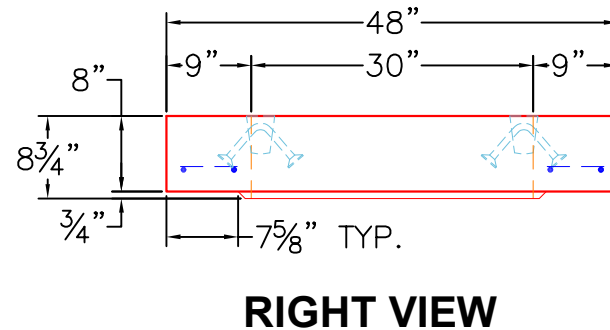
GENERAL NOTES:

1. DESIGN LOADING – AASHTO HS-20.
2. DESIGN SPECIFICATIONS – ACI 318-14.
3. CONCRETE: 5,000 PSI AT 28 DAYS.
4. JOINT SEALANT SHALL CONFORM TO ASTM C-990 OR ASTM C-443.
5. REINFORCING: SEE CONTECH DRAWING VCL_30 FOR REINFORCEMENT INFORMATION. PER ASTM A615 (GRADE 60).
6. WEIGHT: 2,056 LBS
7. STRUCTURE TO HAVE INTERNALS INSTALLED BY ICAST.
8. CONTECH'S LOGO AS WELL AS THE INLETS AND OUTLETS TO BE STENCILED ONTO THE STRUCTURE.


4 EA. CONAC 5CA14 ANCHORS CAST IN AS SHOWN.



FRONT VIEW



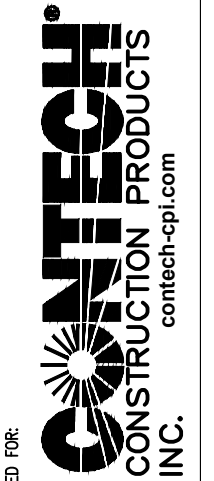
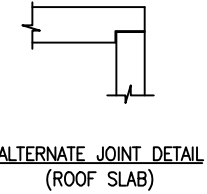
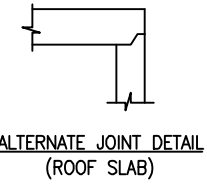
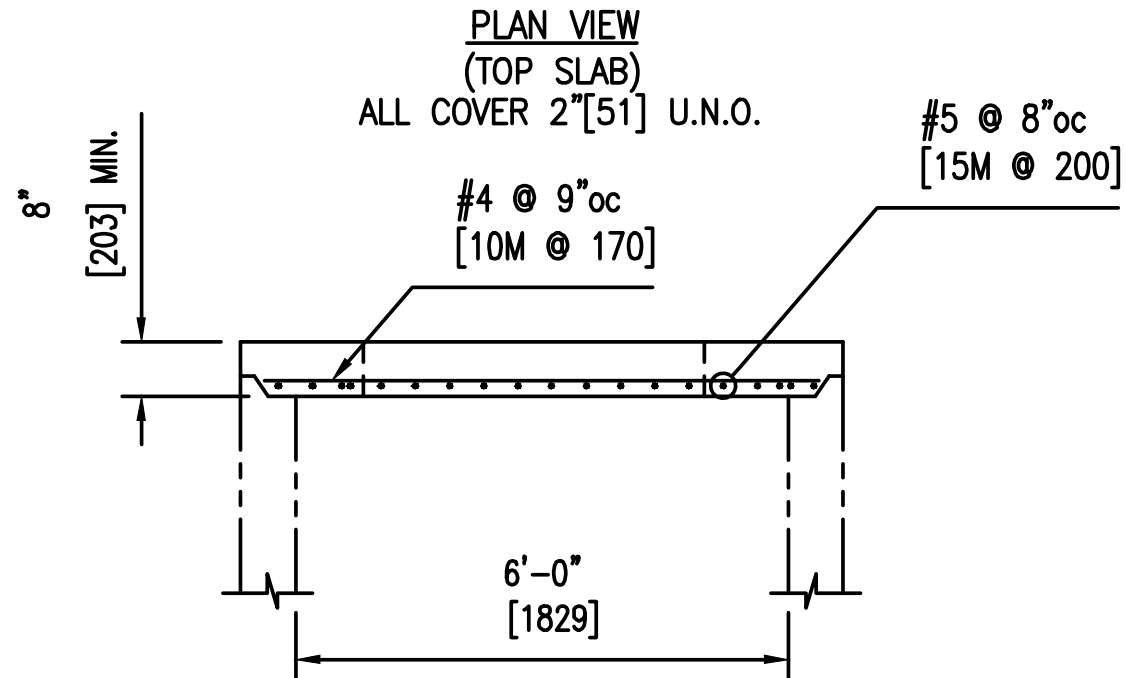
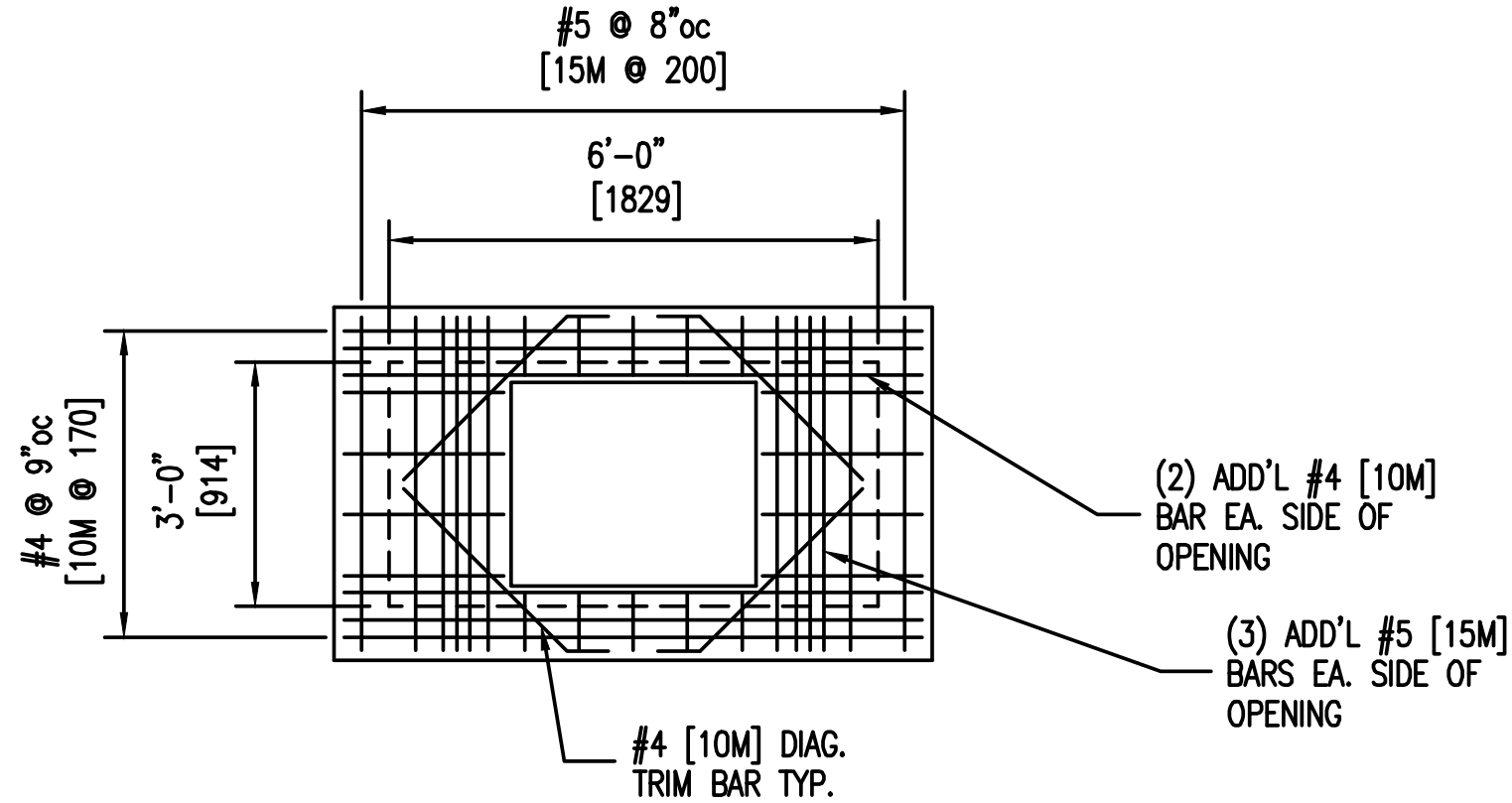
RIGHT VIEW

PRODUCTION WORK ORDER		PRODUCT I.D.: BX036072-08TS06S	DESCRIPTION: 48" X 84" X 8" THICK TOP SLAB		
	QUALITY CONTROL CHECKLIST	PRODUCT VIEW: RIGHT SIDE UP	CUSTOMER: CONTECH ENGINEERED SOLUTIONS, LLC		
	<input type="checkbox"/> ALL DIMENSIONS CORRECT. <input type="checkbox"/> LIFTERS INSTALLED. <input type="checkbox"/> OPENING CORRECT LOCATION. <input type="checkbox"/> REINFORCING CORRECT. <input type="checkbox"/> SURFACE QUALITY ACCEPTABLE. <input type="checkbox"/> EDGES CHAMFERED. <input type="checkbox"/> ALL PATCHWORK ACCEPTABLE.	PLANT: BEAVER DAM, KY.	PROJECT: 836163 AMEREN AUDRAIN CTG DUALFUEL		
		WEIGHT: 2,056 LBS.	STRUCTURE: 10-VCL30		
		TOP SECTION JOINT: N/A	ORDER NO: 25-3595		
		BASE SECTION JOINT: N/A	PC: T. SEKULA	DRAWING: J. COPPAGE	
QC CHECK INITIALS:	DATE: 10/14/25	SCALE: NTS	PG. 1 of 1		

25-3595 -836163 AMEREN AUDRAUB CTG DUALFUEL

NOTES:

1. DESIGN LOAD = AASHTO HS20-44
2. CONCRETE STRENGTH = 5000psi
3. REINFORCING STEEL - GRADE 60
4. OPENINGS, SIZE AND LOCATION, AS REQUIRED. PROVIDE ADDITIONAL REINFORCING EQUAL TO THE BARS INTERRUPTED, 1/2 EACH SIDE. ADD #4 DIAGONAL TRIM BARS AROUND OPENINGS.
5. THE OPENING SIZES AND LOCATIONS MAY VARY. FOR EXACT SIZES AND LOCATIONS SEE CONTECH PROJECT SPECIFIC DRAWINGS.



PREPARED FOR:

TITLE: VORTECLAREX MODEL VCL 30 - ROOF SLAB & BAFFLE

PROJECT: VORTECLAREX

DRAWN BY: KMK

CHECKED BY: SLV

SCALE: NONE

DATE: 10/2009

JOB No: 2006.025.044

NUMBER: VCL_30_HS-20_ROOF_SLAB

