

Job Name: 25-3594 - Chipotle Mexican Grill
 Job Location: Paducah, KY 42001
 Contractor: H&T Development

Plant: 100

Tech: J. Horsley - F

12/23/2025 8:56:19 AM

PC: T. Lewis



Structure ID: DBI 3

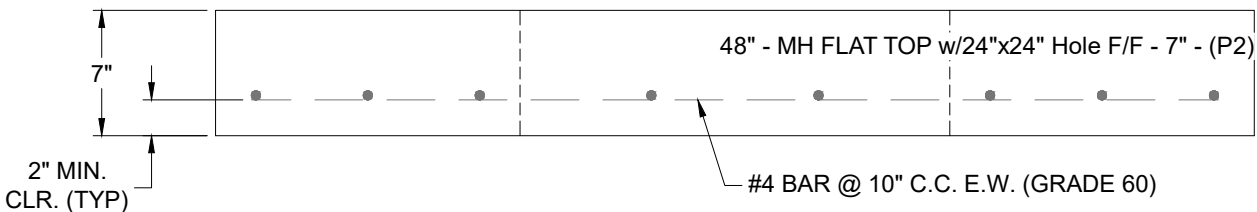
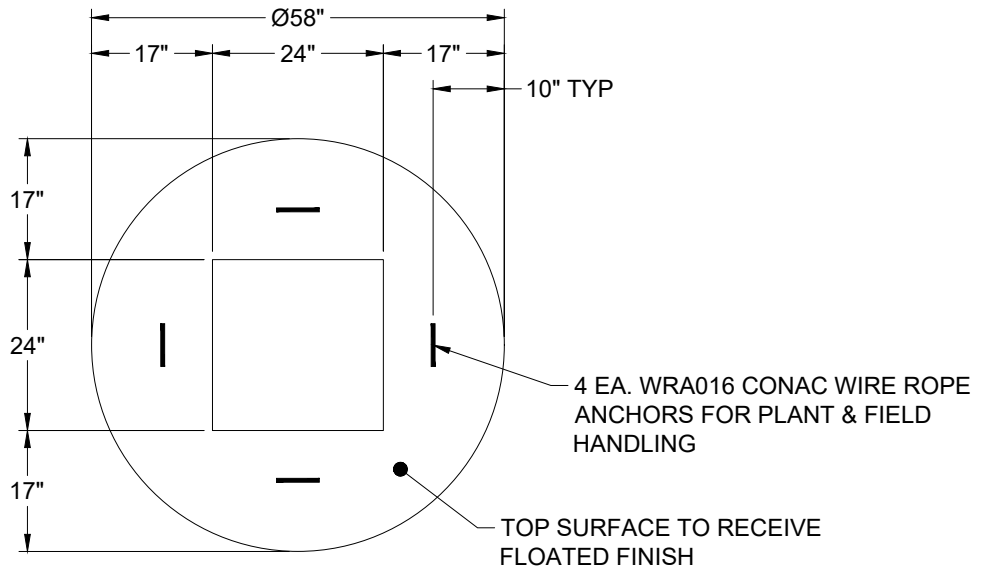
P2 MH048LD07SP

MH FLAT TOP w/24"x24" Hole F/F

- P3) 24" x 24" - CASTING HEIGHT - 4"
- P2) 48" - MH FLAT TOP w/24"x24" Hole F/F - 7"
- P1) 48" - MH BASE Custom Ht F/n - 27"
- 1) CASTING - HOE 280T F/G
- 1) 48" - Conseal CS-102 1.00"
- 1) 24" x 24" - Conseal CS-102 1.00"
- 1) Hole - 20
- 1) Hole - 16

	0 lb
	1214 lb
	2995 lb
	182 lb
	0 lb
	0 lb
	0 lb
	0 lb
Structure Total:	4391 lb

- Structure Notes:
1. PER ASTM C-478 SPECIFICATIONS
 2. CONCRETE: 4,000 PSI AT 28 DAYS
 3. REINFORCEMENT: #4 BAR @ 10" C.C. E.W. (GRADE 60) - 2" MIN. REBAR CLEARANCE (TYP)
 4. NO INVERT CHANNEL
 5. NO STEPS
 6. CASTING BY ICAST (HOE 280T FRAME & GRATE)
 7. LIFTERS: 4 EA. WRA016 CONAC WIRE ROPE ANCHORS FOR PLANT & FIELD HANDLING



Coating (Int): Coating (Ext):	Seam Up: Flat Seam Dn: Flat	Wall Thickness: 5"	Height (Ext): 7"	Weight (Net): 1214 lb Volume (Net): 0.31cu.yd
----------------------------------	--------------------------------	--------------------	------------------	--