

Structure ID: MH A4

P1 MH060BAEVF

MH BASE w/FLANGE (08F/07EF) w/Coating T/n

P5) 24" - CASTING HEIGHT - 7" P4) 48" - ECC CONE w/ 24" HOLE, w/Coating F/G - 42" P3) 48" - MH RISER w/COATING T/G - 72" P2) 60" - MH Trans. Slab - 48" Hole ECC, w/Coating T/G - 15" P1) 60" - MH BASE w/FLANGE (08F/07EF) w/Coating T/n - 68" 1) 60" - MH INVERT CHANNEL - FULL HEIGHT 1) JOINT WRAP - 12" WD x 060" MAC WRAP 1) SPECIAL EXTERNAL COATING - Carboline 300M 1) SECONDARY POUR - Extended Flange 2) JOINT WRAP - 12" WD x 048" MAC WRAP 1) 60" - Conseal CS-102 1.00" (Double) 2) 48" - Conseal CS-102 1.00" (Double) 2) A-Lok - 1040 15) MH Step ML-10-TDS-NCR - 10" 308.6 SqFt) Carboline Bitumastic 300M [EXT]	<table style="width:100%; border-collapse: collapse;"> <tr><td style="text-align: right;">0 lb</td><td></td></tr> <tr><td style="text-align: right;">3116 lb</td><td></td></tr> <tr><td style="text-align: right;">5030 lb</td><td></td></tr> <tr><td style="text-align: right;">1928 lb</td><td></td></tr> <tr><td style="text-align: right;">10066 lb</td><td></td></tr> <tr><td style="text-align: right;">2692 lb</td><td></td></tr> <tr><td style="text-align: right;">0 lb</td><td></td></tr> <tr><td style="text-align: right;">0 lb</td><td></td></tr> <tr><td style="text-align: right;">0 lb</td><td></td></tr> <tr><td style="text-align: right;">0 lb</td><td></td></tr> <tr><td style="text-align: right;">0 lb</td><td></td></tr> <tr><td style="text-align: right;">0 lb</td><td></td></tr> <tr><td style="text-align: right;">2 lb</td><td></td></tr> <tr><td style="text-align: right;">0 lb</td><td></td></tr> <tr><td style="text-align: right;">0 lb</td><td></td></tr> <tr><td style="text-align: right;">-----</td><td></td></tr> <tr><td style="text-align: right;">Structure Total:</td><td style="text-align: right;">22834 lb</td></tr> </table>	0 lb		3116 lb		5030 lb		1928 lb		10066 lb		2692 lb		0 lb		0 lb		0 lb		0 lb		0 lb		0 lb		2 lb		0 lb		0 lb		-----		Structure Total:	22834 lb
0 lb																																			
3116 lb																																			
5030 lb																																			
1928 lb																																			
10066 lb																																			
2692 lb																																			
0 lb																																			
0 lb																																			
0 lb																																			
0 lb																																			
0 lb																																			
0 lb																																			
2 lb																																			
0 lb																																			
0 lb																																			

Structure Total:	22834 lb																																		

- Structure Notes:**
1. PER ASTM C-478 SPECIFICATIONS
 2. CONCRETE: 4,000 PSI AT 28 DAYS
 3. REINFORCEMENT: PER ASTM A615
 4. INVERT CHANNEL REQUIRED
 5. CARBOLINE 300M EXTERIOR COATING REQUIRED
 6. STEPS AT 262.5 DEGREES
 7. HOE MC-375 FRAME & COVER "SANITARY" SUPPLIED BY OTHERS

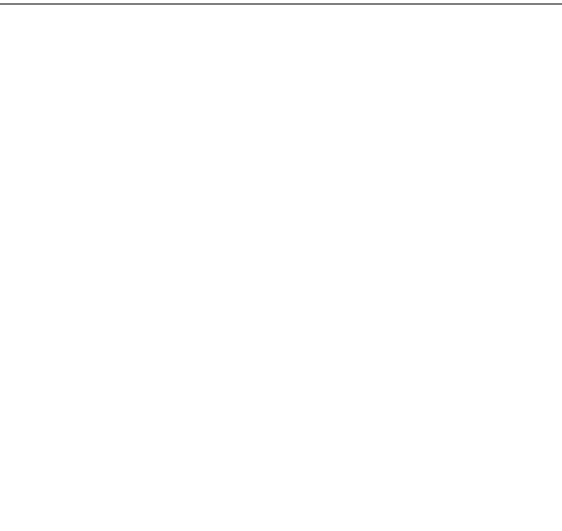
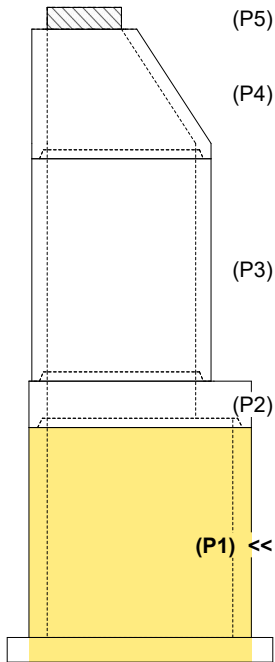
FIRST POUR (BASE): 8,716 LBS
SECOND POUR (FLANGE): 1,350 LBS

Rim: 904' Rim to Invert: 16.825' Slack: 0.115" Sump: 2.215" Step Position: 262.5°

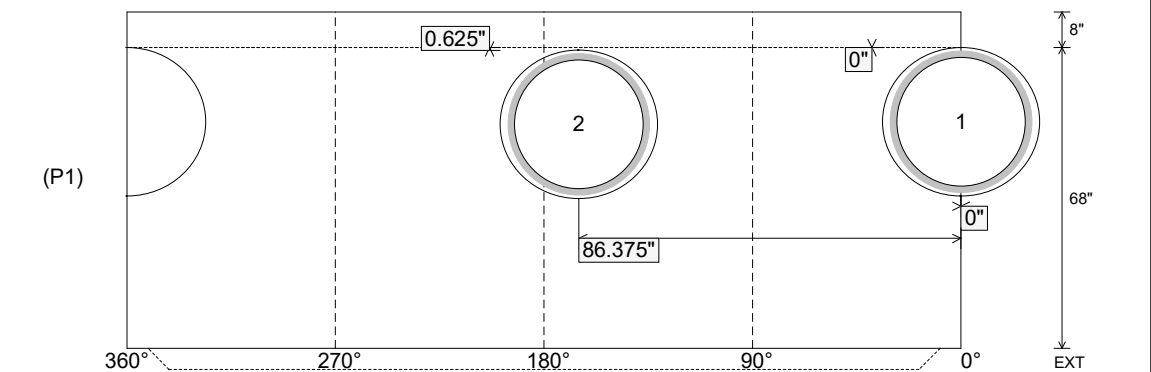
Position	Elev	Angle	Ext. (cw)	Pipe	Pipe OD	Connector	Hole	Horz Size	Up ()	Offset
Invert 1	887.175'	0°	0"	30" PVC F679 (PS115)	32"	A-Lok 1040	33.5"	35.543"	0"	0"
Invert 2	887.225'	165°	103.625"	30" PVC F679 (PS115)	32"	A-Lok 1040	33.5"	35.543"	0.625"	0"
Invert 3										
Invert 4										
Invert 5										
Invert 6										
Invert 7										
Invert 8										

RIGHT-SIDE UP VIEW (int. dimensions)

UPSIDE-DOWN VIEW (int. dimensions)



INSIDE WALL DIMENSIONS



Coating (Int): Coating (Ext): Carboline Bitumastic 300M	Seam Up: Tongue Seam Dn: n/a	Wall Thickness: 6" Floor Height: 8"	Height (Int): 68" Height (Ext): 76"	Weight (Net): 10066 lb Volume (Net): 2.57cu.yd
--	---------------------------------	--	--	---

Structure ID: MH A4

P1 MH060BAEVF

MH BASE w/FLANGE (08F/07EF) w/Coating T/n

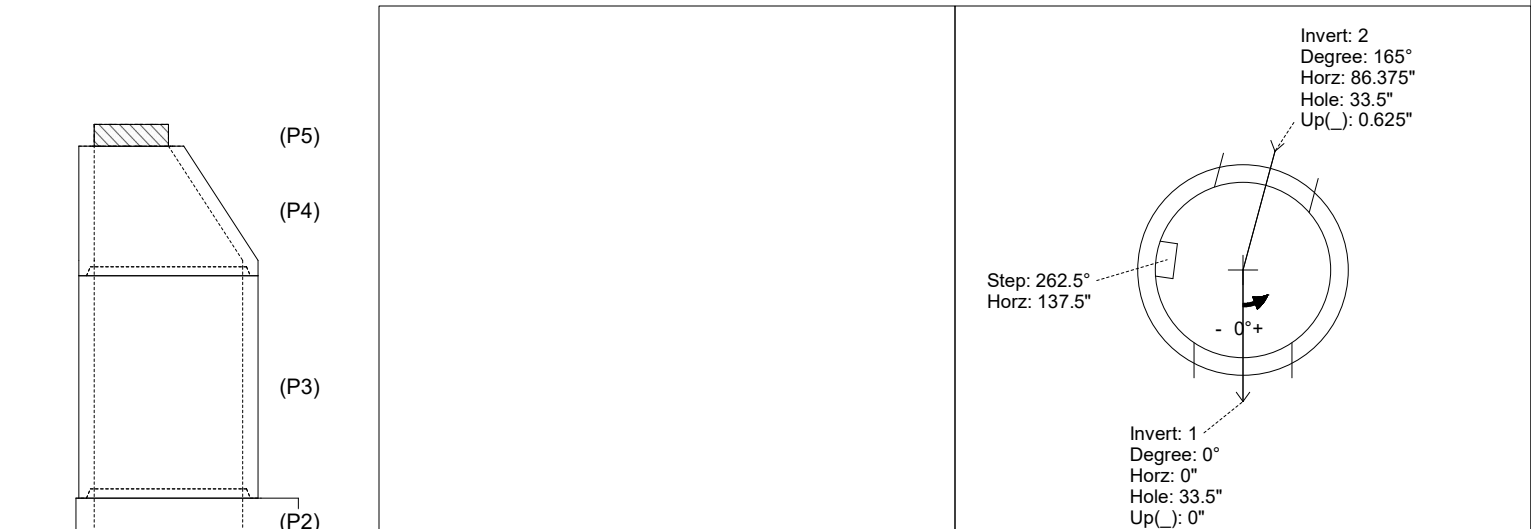
P5) 24" - CASTING HEIGHT - 7" P4) 48" - ECC CONE w/ 24" HOLE, w/Coating F/G - 42" P3) 48" - MH RISER w/COATING T/G - 72" P2) 60" - MH Trans. Slab - 48" Hole ECC, w/Coating T/G - 15" P1) 60" - MH BASE w/FLANGE (08F/07EF) w/Coating T/n - 68" 1) 60" - MH INVERT CHANNEL - FULL HEIGHT 1) JOINT WRAP - 12" WD x 060" MAC WRAP 1) SPECIAL EXTERNAL COATING - Carboline 300M 1) SECONDARY POUR - Extended Flange 2) JOINT WRAP - 12" WD x 048" MAC WRAP 1) 60" - Conseal CS-102 1.00" (Double) 2) 48" - Conseal CS-102 1.00" (Double) 2) A-Lok - 1040 15) MH Step ML-10-TDS-NCR - 10" 308.6 SqFt) Carboline Bitumastic 300M [EXT]	0 lb 3116 lb 5030 lb 1928 lb 10066 lb 2692 lb 0 lb 0 lb 0 lb 0 lb 0 lb 0 lb 0 lb 0 lb 2 lb 0 lb 0 lb ----- Structure Total: 22834 lb	Structure Notes: 1. PER ASTM C-478 SPECIFICATIONS 2. CONCRETE: 4,000 PSI AT 28 DAYS 3. REINFORCEMENT: DRILL & DOWEL #5 BAR @ 8" C.C. E.W. (GRADE 60) FOR FLANGE POUR TIE-IN - 4" MIN. PENETRATION INTO BASE FLOOR & 2" MIN. REBAR CLEARANCE (TYP) 4. INVERT CHANNEL REQUIRED 5. CARBOLINE 300M EXTERIOR COATING REQUIRED 6. STEPS AT 262.5 DEGREES 7. HOE MC-375 FRAME & COVER "SANITARY" SUPPLIED BY OTHERS
---	--	--

FIRST POUR (BASE): 8,716 LBS
SECOND POUR (FLANGE): 1,350 LBS

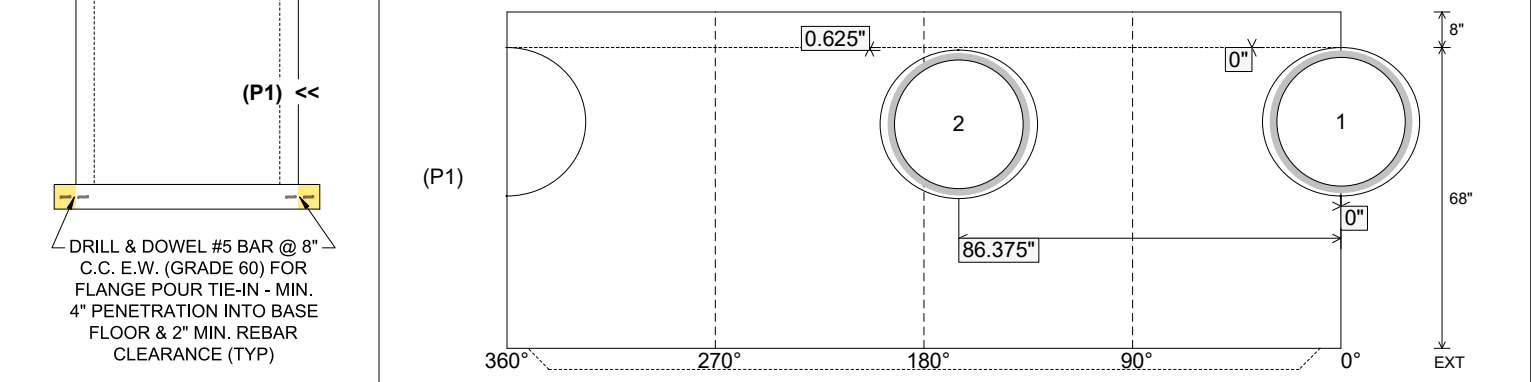
Rim: 904' Rim to Invert: 16.825' Slack: 0.115" Sump: 2.215" Step Position: 262.5°

Position	Elev	Angle	Ext. (cw)	Pipe	Pipe OD	Connector	Hole	Horz Size	Up ()	Offset
Invert 1	887.175'	0°	0"	30" PVC F679 (PS115)	32"	A-Lok 1040	33.5"	35.543"	0"	0"
Invert 2	887.225'	165°	103.625"	30" PVC F679 (PS115)	32"	A-Lok 1040	33.5"	35.543"	0.625"	0"
Invert 3										
Invert 4										
Invert 5										
Invert 6										
Invert 7										
Invert 8										

RIGHT-SIDE UP VIEW (int. dimensions) UPSIDE-DOWN VIEW (int. dimensions)



INSIDE WALL DIMENSIONS



Coating (Int): Coating (Ext): Carboline Bitumastic 300M	Seam Up: Tongue Seam Dn: n/a	Wall Thickness: 6" Floor Height: 8"	Height (Int): 68" Height (Ext): 76"	Weight (Net): 10066 lb Volume (Net): 2.57cu.yd
--	---------------------------------	--	--	---

Structure ID: MH A4

P1 MH060BAEVF

MH BASE w/FLANGE (08F/07EF) w/Coating T/n

P5)	24" - CASTING HEIGHT - 7"	0 lb
P4)	48" - ECC CONE w/ 24" HOLE, w/Coating F/G - 42"	3116 lb
P3)	48" - MH RISER w/COATING T/G - 72"	5030 lb
P2)	60" - MH Trans. Slab - 48" Hole ECC, w/Coating T/G - 15"	1928 lb
P1)	60" - MH BASE w/FLANGE (08F/07EF) w/Coating T/n - 68"	10066 lb
1)	60" - MH INVERT CHANNEL - FULL HEIGHT	2692 lb
1)	JOINT WRAP - 12" WD x 060" MAC WRAP	0 lb
1)	SPECIAL EXTERNAL COATING - Carboline 300M	0 lb
1)	SECONDARY POUR - Extended Flange	0 lb
2)	JOINT WRAP - 12" WD x 048" MAC WRAP	0 lb
1)	60" - Conseal CS-102 1.00" (Double)	0 lb
2)	48" - Conseal CS-102 1.00" (Double)	0 lb
2)	A-Lok - 1040	2 lb
15)	MH Step ML-10-TDS-NCR - 10"	0 lb
	308.6 SqFt) Carboline Bitumastic 300M [EXT]	0 lb
	Structure Total:	22834 lb

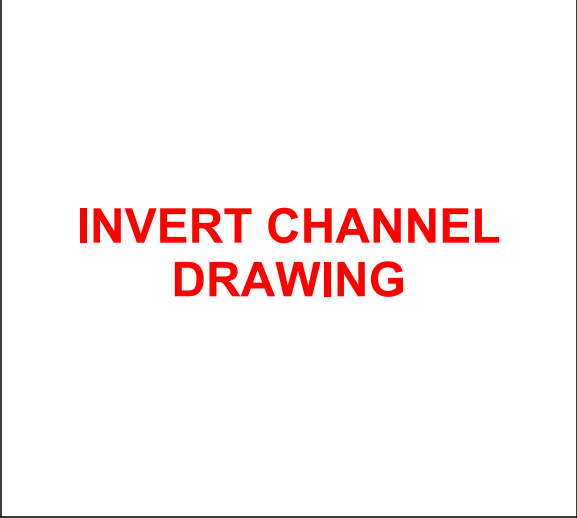
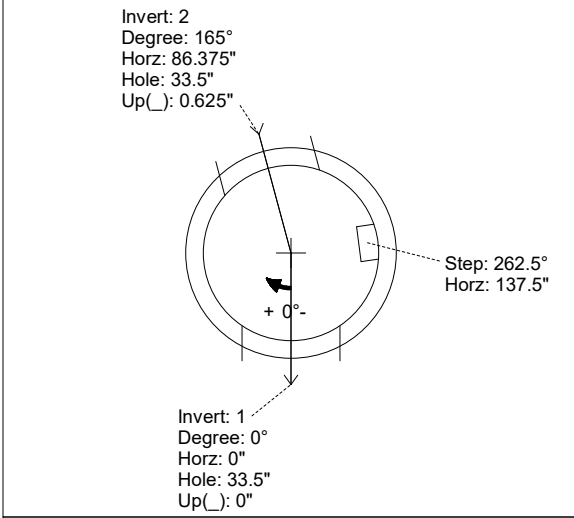
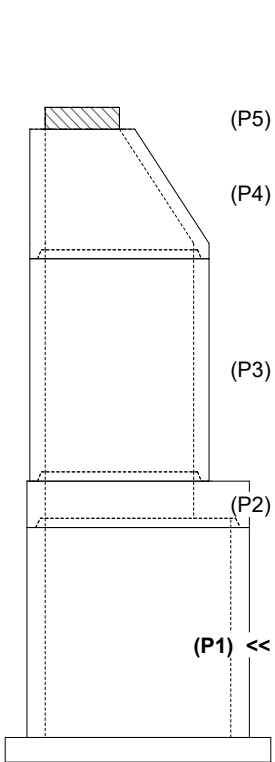
- Structure Notes:
1. PER ASTM C-478 SPECIFICATIONS
 2. CONCRETE: 4,000 PSI AT 28 DAYS
 3. REINFORCEMENT: PER ASTM A615
 4. INVERT CHANNEL REQUIRED
 5. CARBOLINE 300M EXTERIOR COATING REQUIRED
 6. STEPS AT 262.5 DEGREES
 7. HOE MC-375 FRAME & COVER "SANITARY" SUPPLIED BY OTHERS

Rim: 904' Rim to Invert: 16.825' Slack: 0.115" Sump: 2.215" Step Position: 262.5°

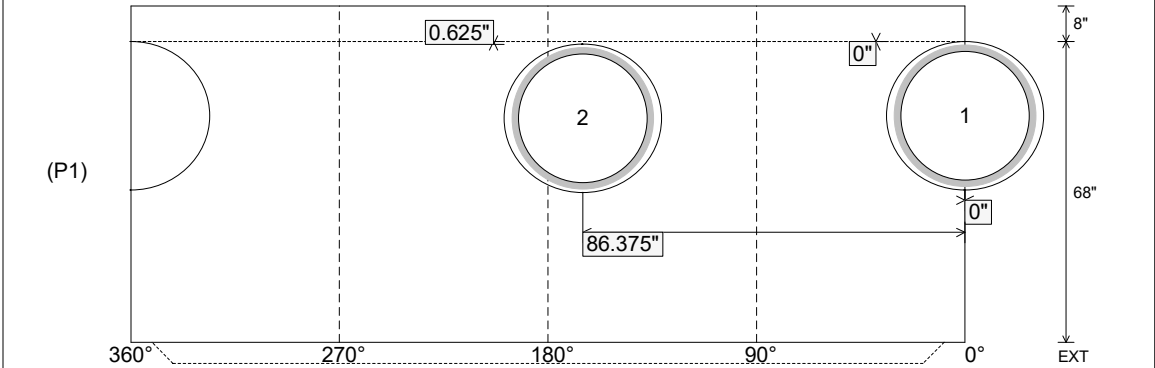
Position	Elev	Angle	Ext. (cw)	Pipe	Pipe OD	Connector	Hole	Horz Size	Up ()	Offset
Invert 1	887.175'	0°	0"	30" PVC F679 (PS115)	32"	A-Lok 1040	33.5"	35.543"	0"	0"
Invert 2	887.225'	165°	103.625"	30" PVC F679 (PS115)	32"	A-Lok 1040	33.5"	35.543"	0.625"	0"
Invert 3										
Invert 4										
Invert 5										
Invert 6										
Invert 7										
Invert 8										

RIGHT-SIDE UP VIEW (int. dimensions)

UPSIDE-DOWN VIEW (int. dimenions)



INSIDE WALL DIMENSIONS



Coating (Int): Coating (Ext): Carboline Bitumastic 300M	Seam Up: Tongue Seam Dn: n/a	Wall Thickness: 6" Floor Height: 8"	Height (Int): 68" Height (Ext): 76"	Weight (Net): 10066 lb Volume (Net): 2.57cu.yd
--	---------------------------------	--	--	---

Job Number:

25-3579

Job Name:

Lebanon Rd Clarks Run Trunk Sewer
Ph 2

Structure:

MH A4

Note:

This Structure Is To Receive An
External Coating of Carboline 300M
(Supplied By iCast)