

Job Name: 25-3579 - Lebanon Rd Clarks Run Trunk Sewer Ph 2
 Job Location: Danville, KY
 Contractor: Hubert Excavating & Contracting

Plant: 100

4/1/2026 1:19:50 PM

Tech: J. Horsley

PC: C. Goff



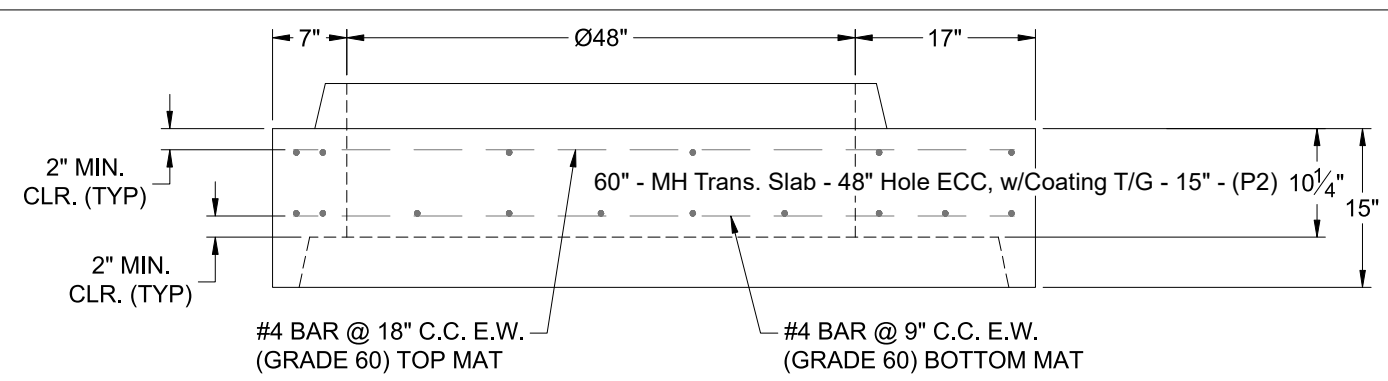
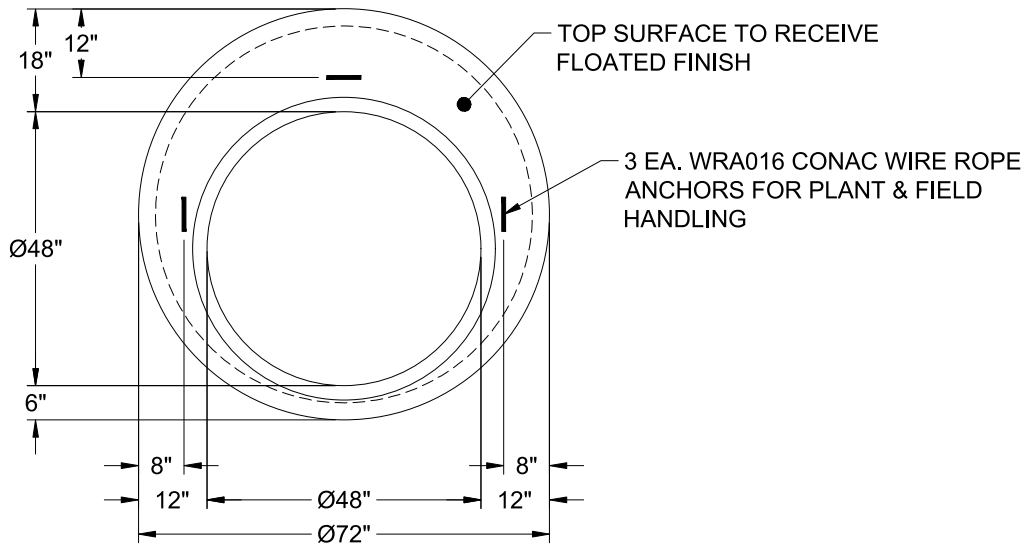
Structure ID: MH A2

P2 MH060TS15-48ECC

MH Trans. Slab - 48" Hole ECC, w/Coating T/G

P6)	24" - CASTING HEIGHT - 7"	0 lb
P5)	24" - GRADE RING F/F - 6"	405 lb
P4)	48" - ECC CONE w/ 24" HOLE, w/Coating F/G - 42"	3116 lb
P3)	48" - MH RISER w/COATING T/G - 60"	4192 lb
P2)	60" - MH Trans. Slab - 48" Hole ECC, w/Coating T/G - 15"	1928 lb
P1)	60" - MH BASE w/FLANGE (08F/07EF) w/Coating T/n - 67"	9961 lb
1)	JOINT WRAP - 12" WD x 060" MAC WRAP	0 lb
1)	60" - MH INVERT CHANNEL - FULL HEIGHT	2692 lb
1)	SPECIAL EXTERNAL COATING - Carboline 300M	0 lb
1)	SECONDARY POUR - Extended Flange	0 lb
2)	JOINT WRAP - 12" WD x 048" MAC WRAP	0 lb
1)	60" - Conseal CS-102 1.00" (Double)	0 lb
2)	48" - Conseal CS-102 1.00" (Double)	0 lb
2)	A-Lok - 1040	2 lb
14)	MH Step ML-10-TDS-NCR - 10"	0 lb
	291.85 SqFt) Carboline Bitumastic 300M [EXT]	0 lb
	Structure Total:	22296 lb

- Structure Notes:
- PER ASTM C-478 SPECIFICATIONS
 - CONCRETE: 4,000 PSI AT 28 DAYS
 - REINFORCEMENT - 2" MIN. REBAR CLEARANCE (TYP):
 - TOP MAT: #4 BAR @ 18" C.C. E.W. (GRADE 60)
 - BOTTOM MAT: #4 BAR @ 9" C.C. E.W. (GRADE 60)
 - CARBOLINE 300M EXTERIOR COATING REQUIRED
 - HOE MC-375 FRAME & COVER "SANITARY" SUPPLIED BY OTHERS
 - LIFTERS: 3 EA. WRA016 CONAC WIRE ROPE ANCHORS FOR PLANT & FIELD HANDLING
 - TOP SURFACE TO RECEIVE FLOATED FINISH



Coating (Int): Coating (Ext): Carboline Bitumastic 300M	Seam Up: Tongue Seam Dn: Groove	Wall Thickness: 6"	Height (Ext): 15"	Weight (Net): 1928 lb Volume (Net): 0.49cu.yd
------------------------------------------------------------	------------------------------------	--------------------	-------------------	--------------------------------------------------

Job Number:

25-3579

Job Name:

Lebanon Rd Clarks Run Trunk Sewer
Ph 2

Structure:

MH A2

Note:

This Structure Is To Receive An
External Coating of Carboline 300M
(Supplied By iCast)