

Structure ID: MH A2

P1 MH060BAEVF

MH BASE w/FLANGE (08F/07EF) w/Coating T/n

P6)	24" - CASTING HEIGHT - 7"	0 lb
P5)	24" - GRADE RING F/F - 6"	405 lb
P4)	48" - ECC CONE w/ 24" HOLE, w/Coating F/G - 42"	3116 lb
P3)	48" - MH RISER w/COATING T/G - 60"	4192 lb
P2)	60" - MH Trans. Slab - 48" Hole ECC, w/Coating T/G - 15"	1928 lb
P1)	60" - MH BASE w/FLANGE (08F/07EF) w/Coating T/n - 67"	9961 lb
1)	JOINT WRAP - 12" WD x 060" MAC WRAP	0 lb
1)	60" - MH INVERT CHANNEL - FULL HEIGHT	2692 lb
1)	SPECIAL EXTERNAL COATING - Carboline 300M	0 lb
1)	SECONDARY POUR - Extended Flange	0 lb
2)	JOINT WRAP - 12" WD x 048" MAC WRAP	0 lb
1)	60" - Conseal CS-102 1.00" (Double)	0 lb
2)	48" - Conseal CS-102 1.00" (Double)	0 lb
2)	A-Lok - 1040	2 lb
14)	MH Step ML-10-TDS-NCR - 10"	0 lb
	291.85 SqFt) Carboline Bitumastic 300M [EXT]	0 lb
	Structure Total:	22296 lb

Structure Notes:

- PER ASTM C-478 SPECIFICATIONS
- CONCRETE: 4,000 PSI AT 28 DAYS
- REINFORCEMENT: DRILL & DOWEL #5 BAR @ 8" C.C. E.W. (GRADE 60) FOR FLANGE POUR TIE-IN - 4" MIN. PENETRATION INTO BASE FLOOR & 2" MIN. REBAR CLEARANCE (TYP)
- INVERT CHANNEL REQUIRED
- CARBOLINE 300M EXTERIOR COATING REQUIRED
- STEPS AT 258 DEGREES
- HOE MC-375 FRAME & COVER "SANITARY" SUPPLIED BY OTHERS

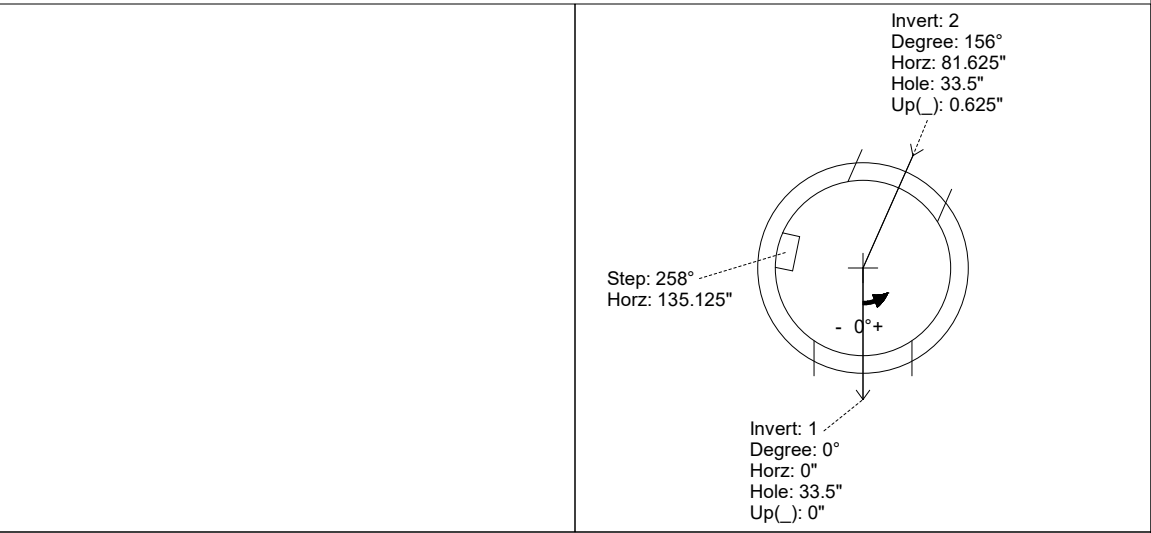
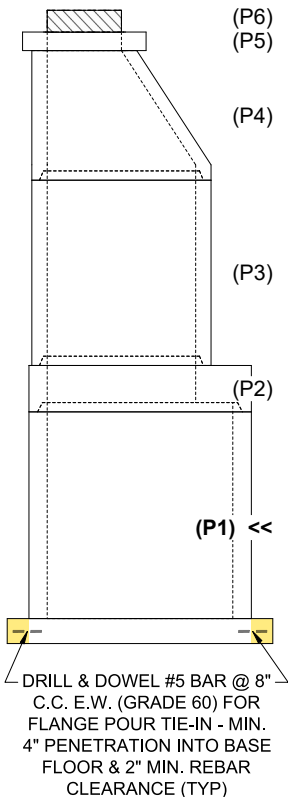
FIRST POUR (BASE): 8,611 LBS
SECOND POUR (FLANGE): 1,350 LBS

Rim: 903' Rim to Invert: 16.255' Slack: 0.275" Sump: 2.215" Step Position: 258°

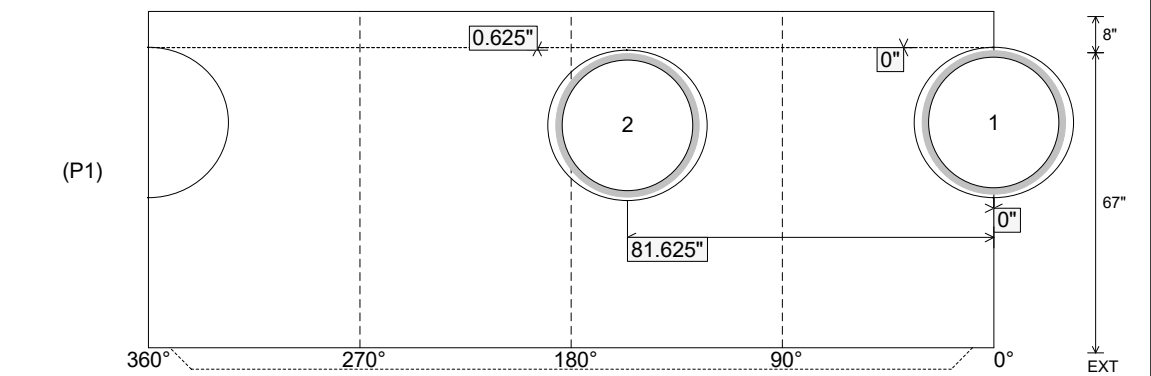
Position	Elev	Angle	Ext. (cw)	Pipe	Pipe OD	Connector	Hole	Horz Size	Up ()	Offset
Invert 1	886.745'	0°	0"	30" PVC F679 (PS115)	32"	A-Lok 1040	33.5"	35.543"	0"	0"
Invert 2	886.795'	156°	98"	30" PVC F679 (PS115)	32"	A-Lok 1040	33.5"	35.543"	0.625"	0"
Invert 3										
Invert 4										
Invert 5										
Invert 6										
Invert 7										
Invert 8										

RIGHT-SIDE UP VIEW (int. dimensions)

UPSIDE-DOWN VIEW (int. dimensions)



INSIDE WALL DIMENSIONS



Coating (Int): Coating (Ext): Carboline Bitumastic 300M	Seam Up: Tongue Seam Dn: n/a	Wall Thickness: 6" Floor Height: 8"	Height (Int): 67" Height (Ext): 75"	Weight (Net): 9961 lb Volume (Net): 2.54cu.yd
--	---------------------------------	--	--	--

Structure ID: MH A2

P1 MH060BAEVF

MH BASE w/FLANGE (08F/07EF) w/Coating T/n

P6)	24" - CASTING HEIGHT - 7"	0 lb
P5)	24" - GRADE RING F/F - 6"	405 lb
P4)	48" - ECC CONE w/ 24" HOLE, w/Coating F/G - 42"	3116 lb
P3)	48" - MH RISER w/COATING T/G - 60"	4192 lb
P2)	60" - MH Trans. Slab - 48" Hole ECC, w/Coating T/G - 15"	1928 lb
P1)	60" - MH BASE w/FLANGE (08F/07EF) w/Coating T/n - 67"	9961 lb
1)	JOINT WRAP - 12" WD x 060" MAC WRAP	0 lb
1)	60" - MH INVERT CHANNEL - FULL HEIGHT	2692 lb
1)	SPECIAL EXTERNAL COATING - Carboline 300M	0 lb
1)	SECONDARY POUR - Extended Flange	0 lb
2)	JOINT WRAP - 12" WD x 048" MAC WRAP	0 lb
1)	60" - Conseal CS-102 1.00" (Double)	0 lb
2)	48" - Conseal CS-102 1.00" (Double)	0 lb
2)	A-Lok - 1040	2 lb
14)	MH Step ML-10-TDS-NCR - 10"	0 lb
	291.85 SqFt) Carboline Bitumastic 300M [EXT]	0 lb
	Structure Total:	22296 lb

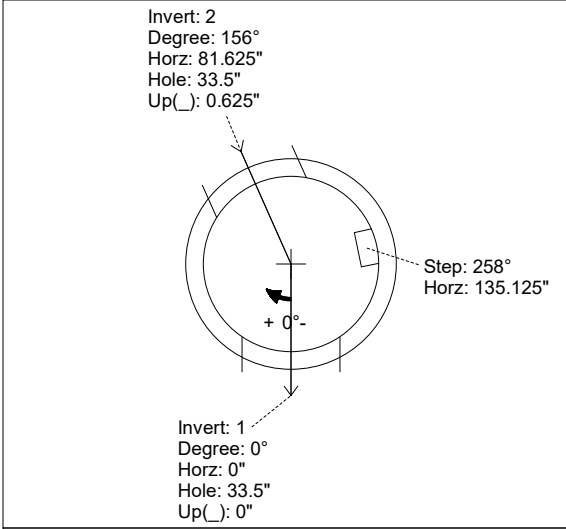
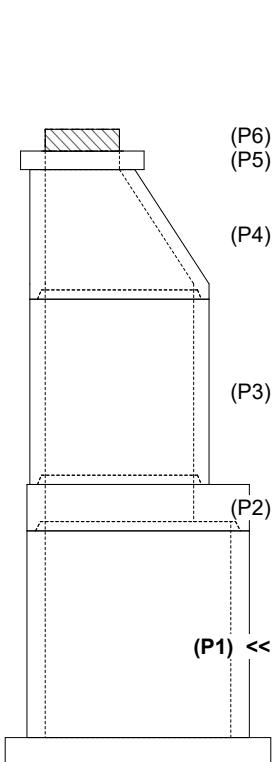
- Structure Notes:
1. PER ASTM C-478 SPECIFICATIONS
 2. CONCRETE: 4,000 PSI AT 28 DAYS
 3. REINFORCEMENT: PER ASTM A615
 4. INVERT CHANNEL REQUIRED
 5. CARBOLINE 300M EXTERIOR COATING REQUIRED
 6. STEPS AT 258 DEGREES
 7. HOE MC-375 FRAME & COVER "SANITARY" SUPPLIED BY OTHERS

Rim: 903' Rim to Invert: 16.255' Slack: 0.275" Sump: 2.215" Step Position: 258°

Position	Elev	Angle	Ext. (cw)	Pipe	Pipe OD	Connector	Hole	Horz Size	Up ()	Offset
Invert 1	886.745'	0°	0"	30" PVC F679 (PS115)	32"	A-Lok 1040	33.5"	35.543"	0"	0"
Invert 2	886.795'	156°	98"	30" PVC F679 (PS115)	32"	A-Lok 1040	33.5"	35.543"	0.625"	0"
Invert 3										
Invert 4										
Invert 5										
Invert 6										
Invert 7										
Invert 8										

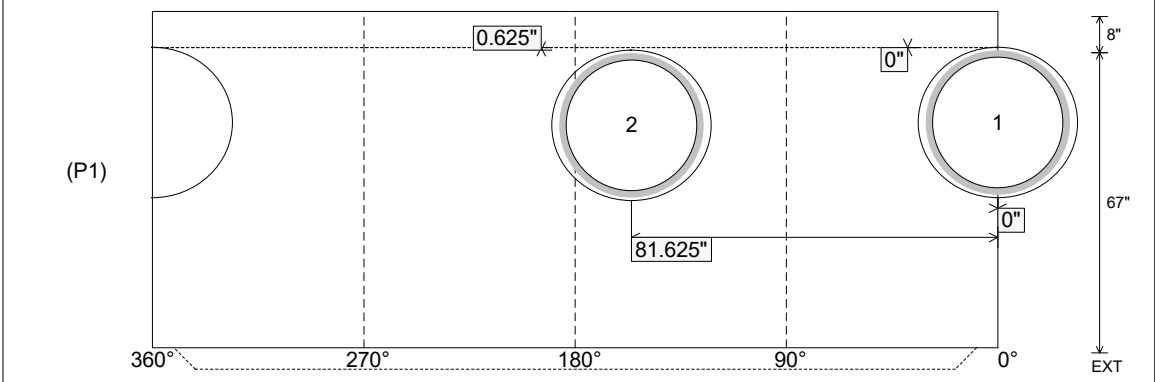
RIGHT-SIDE UP VIEW (int. dimensions)

UPSIDE-DOWN VIEW (int. dimensions)



INVERT CHANNEL DRAWING

INSIDE WALL DIMENSIONS



Coating (Int): Coating (Ext): Carboline Bitumastic 300M	Seam Up: Tongue Seam Dn: n/a	Wall Thickness: 6" Floor Height: 8"	Height (Int): 67" Height (Ext): 75"	Weight (Net): 9961 lb Volume (Net): 2.54cu.yd
--	---------------------------------	--	--	--

Job Number:

25-3579

Job Name:

Lebanon Rd Clarks Run Trunk Sewer
Ph 2

Structure:

MH A2

Note:

This Structure Is To Receive An
External Coating of Carboline 300M
(Supplied By iCast)