

**Structure ID: MH A1**

**P1 MH060DHRSVH**

**MH DH RISER Custom Ht T/F**

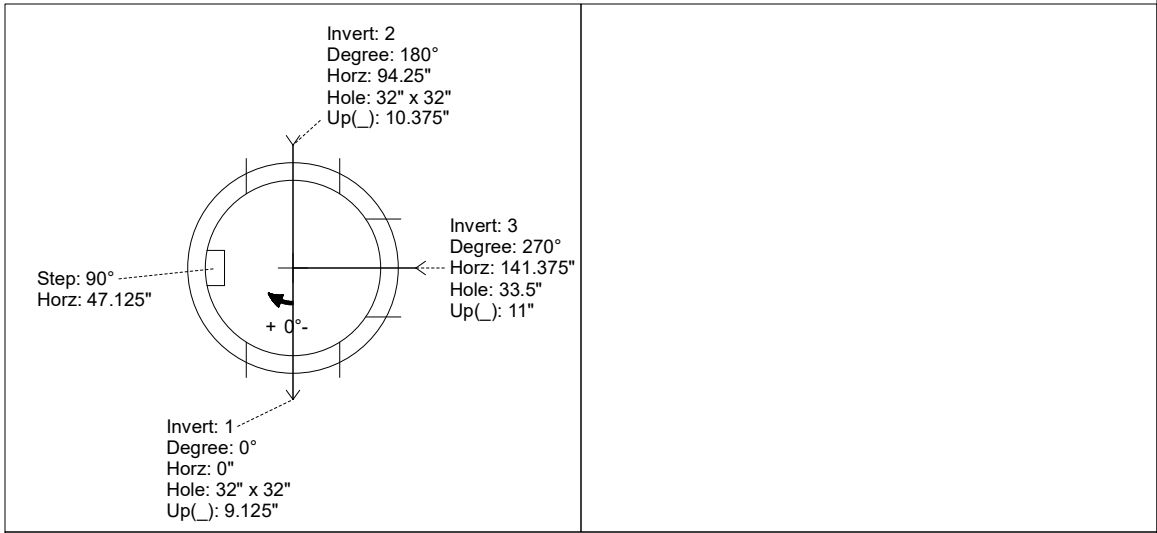
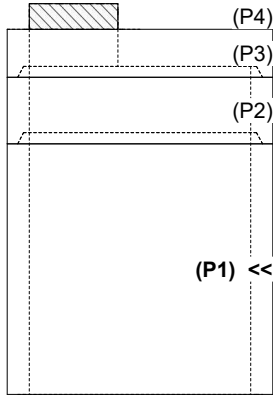
P4) 24" - CASTING HEIGHT - 7" P3) 60" - MH FLAT TOP w/ 24" ECC Hole F/G - 13" P2) 60" - MH RISER SPECIAL T/G - 18" P1) 60" - MH DH RISER Custom Ht T/F - 68" 2) JOINT WRAP - 12" WD x 060" MAC WRAP 1) SPECIAL EXTERNAL COATING - Carboline 300M 2) 60" - Conseal CS-102 1.00" (Double) 1) DOGHOUSE - 32"x41.125" 1) DOGHOUSE - 32"x42.375" 1) A-Lok - 1040 7) MH Step ML-10-TDS-NCR - 10" 183.78 SqFt) Carboline Bitumastic 300M [EXT]	0 lb 2869 lb 1879 lb 5341 lb 0 lb 0 lb 0 lb 0 lb 0 lb 0 lb 1 lb 0 lb 0 lb	<b>Structure Notes:</b> 1. PER ASTM C-478 SPECIFICATIONS 2. CONCRETE: 4,000 PSI AT 28 DAYS 3. REINFORCEMENT: PER ASTM A615 4. CARBOLINE 300M EXTERIOR COATING REQUIRED 5. STEPS AT 90 DEGREES 6. HOE MC-375 FRAME & COVER "SANITARY" SUPPLIED BY OTHERS
Structure Total:		10090 lb

Rim: 894.24' Rim to Invert: 7.86' Slack: 0.32" Sump: 12" Step Position: 90°

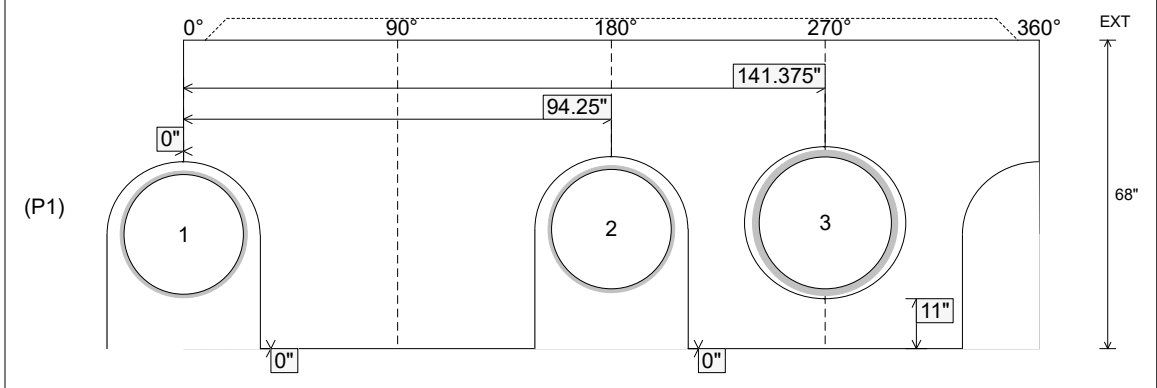
Position	Elev	Angle	Ext. (cw)	Pipe	Pipe OD	Connector	Hole	Horz Size	Up (↓)	Offset
Invert 1	886.38'	0°	0"	27" PVC F679 (PS46)	27.953"	DOGHOUSE 32"x32"	32" x 41.125"	33.752"	0"	0"
Invert 2	886.48'	180°	113.125"	27" PVC F679 (PS46)	27.953"	DOGHOUSE 32"x32"	32" x 42.375"	33.752"	0"	0"
Invert 3	886.48'	270°	169.625"	30" PVC F679 (PS115)	32"	A-Lok 1040	33.5"	35.543"	11"	0"
Invert 4										
Invert 5										
Invert 6										
Invert 7										
Invert 8										

RIGHT-SIDE UP VIEW (int. dimensions)

UPSIDE-DOWN VIEW (int. dimensions)



INSIDE WALL DIMENSIONS



Coating (Int): Coating (Ext): Carboline Bitumastic 300M	Seam Up: Tongue Seam Dn: Flat	Wall Thickness: 6" Floor Height: 0"	Height (Int): 68" Height (Ext): 68"	Weight (Net): 5341 lb Volume (Net): 1.36cu.yd
--	----------------------------------	--	--	--

**Job Number:**

25-3579

**Job Name:**

Lebanon Rd Clarks Run Trunk Sewer  
Ph 2

**Structure:**

MH A1

**Note:**

This Structure Is To Receive An  
External Coating of Carboline 300M  
(Supplied By iCast)