

Job Name: 25-3576 - HWU Wright St. Pump Station
 Job Location: Henderson, KY
 Contractor: M. Bowling, Inc.

Plant: 100

2/9/2026 8:32:25 AM

Tech: J. Horsley - F

PC: T. Lewis



Structure ID: WW

P3 MH096LD17SPCDARED

MH FLAT TOP w/42"x72" Hatch w/ConBlock-CDA Red F/G

- P4) 42" x 72" - HATCH (CAST FLUSH) - 3"
- P3) 96" - MH FLAT TOP w/42"x72" Hatch w/ConBlock-CDA Red F/G - 17"
- P2) 96" - MH RISER SPECIAL w/ConBlock-CDA Red T/G - 96"
- P1) 96" - MH BASE EF Cust. Ht. 15"F (14"EF = 142"OD) w/ConBlock-CDA Red T/n - 74"
- 1) ADMIXTURE CONBLOCK CDA RED
- 2) JOINT WRAP - 12" WD x 096" MAC WRAP
- 1) HATCH (Alum.) - HALLIDAY W1S 42"x72"
- 1) This Structure Includes a Cast-in Item - Halliday W1S 42" x 72" Hatch
- 1) SECONDARY POUR - BASE FLOOR
- 1) THIRD POUR - EXTENDED FLANGE
- 2) 96" - Conseal CS-231 1.00" (Double)
- 3) PSX - 8QRS-S NYLO
- 1) PSX - 16L NYLO

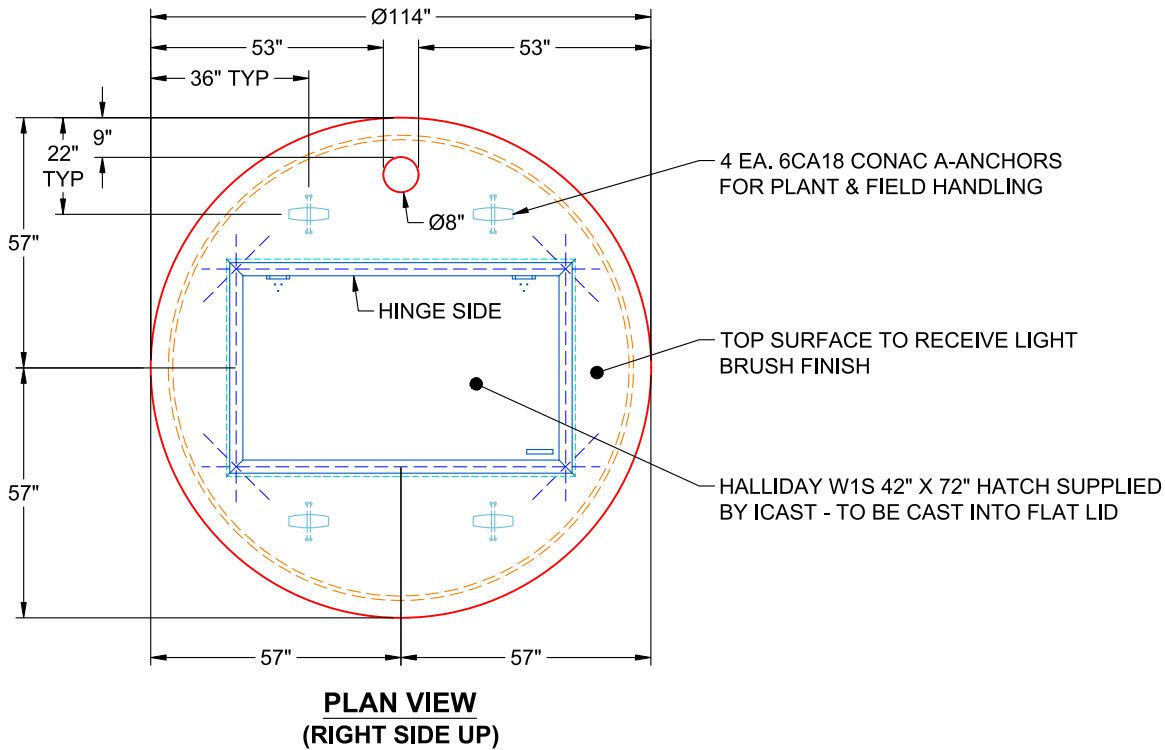
0 lb
 9530 lb
 23645 lb
 38368 lb
 0 lb
 0 lb
 135 lb
 0 lb
 0 lb
 0 lb
 0 lb
 0 lb
 20 lb
 8 lb

 71706 lb

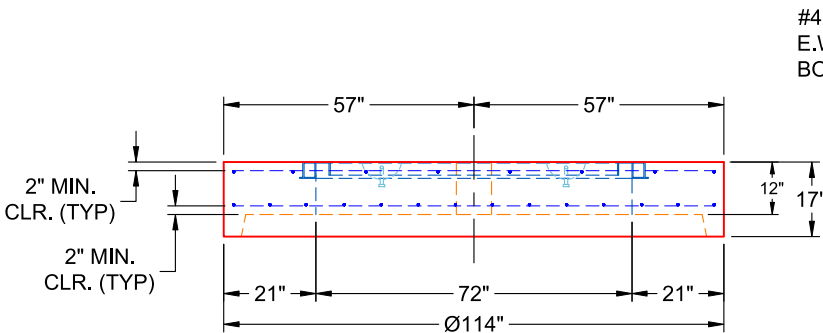
Structure Total:

Structure Notes:

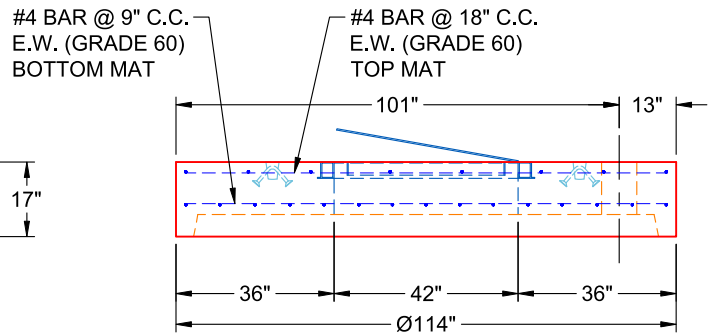
1. PER ASTM C-478 SPECIFICATIONS
2. CONCRETE: 4,000 PSI AT 28 DAYS
3. REINFORCEMENT - 2" MIN. REBAR CLEARANCE (TYP):
 - TOP MAT: #4 BAR @ 18" C.C. E.W. (GRADE 60)
 - BOTTOM MAT: #4 BAR @ 9" C.C. E.W. (GRADE 60)
4. CONBLOCK CDA RED ADMIXTURE REQUIRED
5. HALLIDAY W1S 42" X 72" HATCH SUPPLIED BY ICAST - TO BE CAST INTO FLAT LID
6. LIFTERS: 4 EA. 6CA18 CONAC A-ANCHORS FOR PLANT & FIELD HANDLING
7. TOP SURFACE TO RECEIVE LIGHT BRUSH FINISH



**PLAN VIEW
(RIGHT SIDE UP)**



**FRONT VIEW
(RIGHT SIDE UP)**



**SIDE VIEW
(RIGHT SIDE UP)**

Coating (Int):
 Coating (Ext):

Seam Up: Flat
 Seam Dn: Groove

Wall Thickness: 9"

Height (Ext): 17"

Weight (Net): 9478 lb
 Volume (Net): 2.42cu.yd

Job Number:

25-3576

Job Name:

HWU Wright St. Pump Station

Structure:

WW

Note:

Halliday W1S 42" x 72" Hatch
Supplied By iCast To Be Cast Into
Flat Lid