

Job Name: 25-3576 - HWU Wright St. Pump Station	Plant: 100	Tech: J. Horsley - F
Job Location: Henderson, KY	2/9/2026 8:25:54 AM	PC: T. Lewis
Contractor: M. Bowling, Inc.		



Structure ID: WW

P1 MH096BAEVFCDARED

MH BASE EF Cust. Ht. 15"F (14"EF =142"OD) w/ConBlock-CDA R

P4) 42" x 72" - HATCH (CAST FLUSH) - 3"	0 lb
P3) 96" - MH FLAT TOP w/42"x72" Hatch w/ConBlock-CDA Red F/G - 17"	9530 lb
P2) 96" - MH RISER SPECIAL w/ConBlock-CDA Red T/G - 96"	23645 lb
P1) 96" - MH BASE EF Cust. Ht. 15"F (14"EF =142"OD) w/ConBlock-CDA Red T/n - 74"	38368 lb
1) ADMIXTURE CONBLOCK CDA RED	0 lb
2) JOINT WRAP - 12" WD x 096" MAC WRAP	0 lb
1) HATCH (Alum.) - HALLIDAY W1S 42"x72"	135 lb
1) This Structure Includes a Cast-in Item - Halliday W1S 42" x 72" Hatch	0 lb
1) SECONDARY POUR - BASE FLOOR	0 lb
1) THIRD POUR - EXTENDED FLANGE	0 lb
2) 96" - Conseal CS-231 1.00" (Double)	0 lb
3) PSX - 8QRS-S NYLO	20 lb
1) PSX - 16L NYLO	8 lb
Structure Total:	71706 lb

Structure Notes:

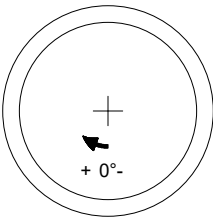
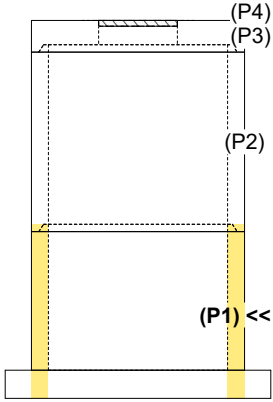
- PER ASTM C-478 SPECIFICATIONS
- CONCRETE: 4,000 PSI AT 28 DAYS
- REINFORCEMENT: PER ASTM A615
- NO INVERT CHANNEL
- CONBLOCK CDA RED ADMIXTURE REQUIRED
- NO STEPS
- HALLIDAY W1S 42" X 72" HATCH SUPPLIED BY ICAST - TO BE CAST INTO FLAT LID
- SEE SECOND POUR DRAWING FOR FLOOR DETAILS & SEE THIRD POUR DRAWING FOR EXTENDED FLANGE DETAILS
- LIFTERS: 4 EA. 8CA18 CONAC A-ANCHORS FOR PLANT & FIELD HANDLING - INSTALLED IN WALLS AT 0°, 90°, 180°, & 270°, MIN. 20" FROM TOP OF WALLS

Rim: 384.54' Rim to Invert: 7.54' Slack: 0.68" Sump: 97.2" Step Position:

Position	Elev	Angle	Ext. (cw)	Pipe	Pipe OD	Connector	Hole	Horz Size	Up ()	Offset
Invert 1										
Invert 2										
Invert 3										
Invert 4										
Invert 5										
Invert 6										
Invert 7										
Invert 8										

RIGHT-SIDE UP VIEW (int. dimensions)

UPSIDE-DOWN VIEW (int. dimenions)

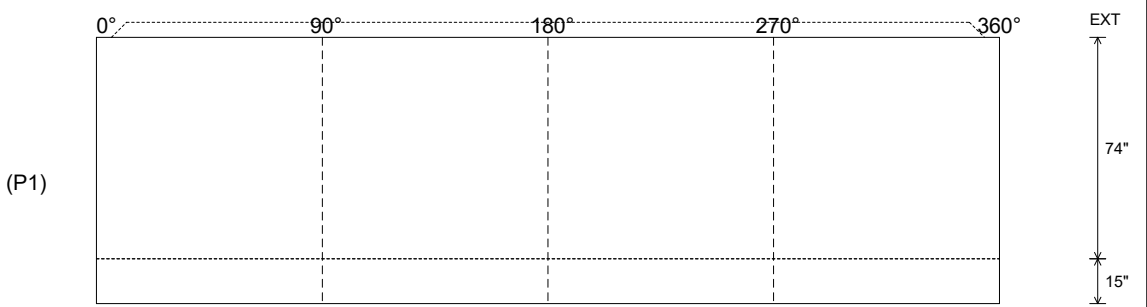


**FIRST POUR (RISER / WALLS):
22,172 LBS**

**SECOND POUR (FLOOR):
9,111 LBS**

**THIRD POUR (EXT. FLANGE):
7,085 LBS**

INSIDE WALL DIMENSIONS



Coating (Int):	Seam Up: Tongue	Wall Thickness: 9"	Height (Int): 74"	Weight (Net): 38368 lb
Coating (Ext):	Seam Dn: n/a	Floor Height: 15"	Height (Ext): 89"	Volume (Net): 9.8cu.yd

Job Name: 25-3576 - HWU Wright St. Pump Station
 Job Location: Henderson, KY
 Contractor: M. Bowling, Inc.

Plant: 100

2/9/2026 8:25:54 AM

Tech: J. Horsley - F

PC: T. Lewis



Structure ID: WW

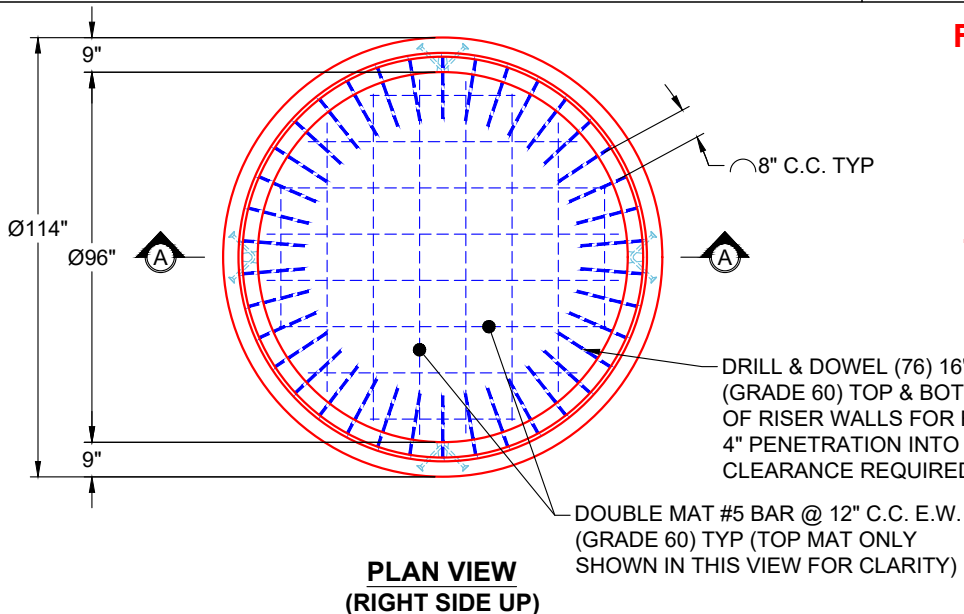
P1 MH096BAEVFCDARED

MH BASE EF Cust. Ht. 15"F (14"EF =142"OD) w/ConBlock-CDA R

P4) 42" x 72" - HATCH (CAST FLUSH) - 3"	0 lb
P3) 96" - MH FLAT TOP w/42"x72" Hatch w/ConBlock-CDA Red F/G - 17"	9530 lb
P2) 96" - MH RISER SPECIAL w/ConBlock-CDA Red T/G - 96"	23645 lb
P1) 96" - MH BASE EF Cust. Ht. 15"F (14"EF =142"OD) w/ConBlock-CDA Red T/n - 74"	38368 lb
1) ADMIXTURE CONBLOCK CDA RED	0 lb
2) JOINT WRAP - 12" WD x 096" MAC WRAP	0 lb
1) HATCH (Alum.) - HALLIDAY W1S 42"x72"	135 lb
1) This Structure Includes a Cast-in Item - Halliday W1S 42" x 72" Hatch	0 lb
1) SECONDARY POUR - BASE FLOOR	0 lb
1) THIRD POUR - EXTENDED FLANGE	0 lb
2) 96" - Conseal CS-231 1.00" (Double)	0 lb
3) PSX - 8QRS-S NYLO	20 lb
1) PSX - 16L NYLO	8 lb
Structure Total:	71706 lb

- Structure Notes:**
1. PER ASTM C-478 SPECIFICATIONS
 2. CONCRETE: 4,000 PSI AT 28 DAYS
 3. REINFORCEMENT: DRILL & DOWEL #5 BAR @ 8" C.C. (GRADE 60) TOP & BOTTOM MAT AS SHOWN
 4. NO INVERT CHANNEL
 5. CONBLOCK CDA RED ADMIXTURE REQUIRED
 6. NO STEPS
 7. HALLIDAY W1S 42" X 72" HATCH SUPPLIED BY ICAST - TO BE CAST INTO FLAT LID
 8. SEE FIRST POUR DRAWING FOR RISER / WALL DETAILS & SEE THIRD POUR DRAWING FOR EXTENDED FLANGE DETAILS

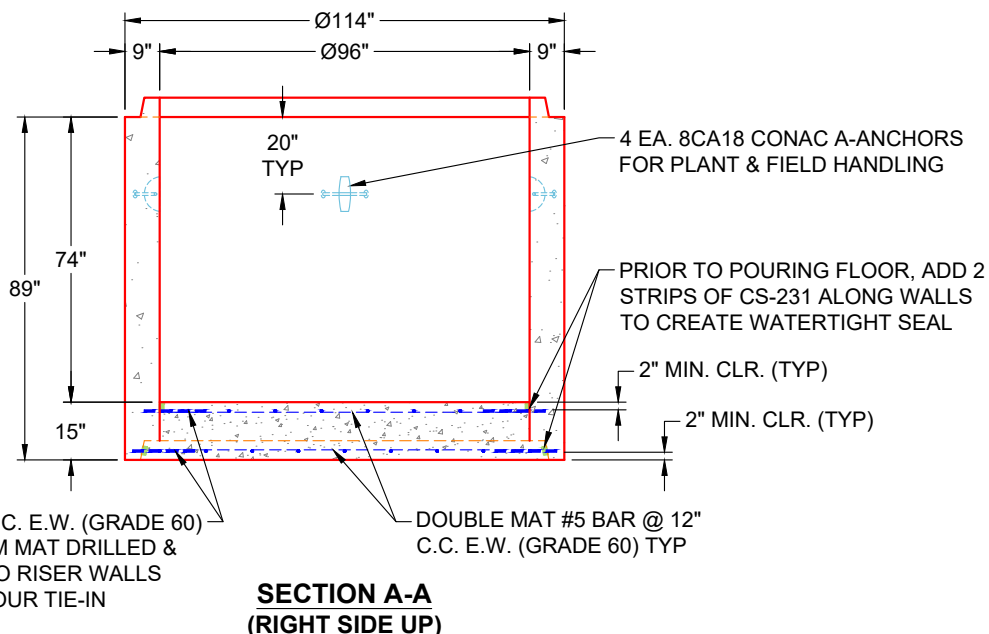
Rim: 384.54' Rim to Invert: 7.54' Slack: 0.68" Sump: 97.2" Step Position:



**FIRST POUR (RISER / WALLS):
22,172 LBS**

**SECOND POUR (FLOOR):
9,111 LBS**

**THIRD POUR (EXT. FLANGE):
7,085 LBS**



Coating (Int): Coating (Ext):	Seam Up: Tongue Seam Dn: n/a	Wall Thickness: 9" Floor Height: 15"	Height (Int): 74" Height (Ext): 89"	Weight (Net): 38368 lb Volume (Net): 9.8cu.yd
----------------------------------	---------------------------------	---	--	--

Job Name: 25-3576 - HWU Wright St. Pump Station
 Job Location: Henderson, KY
 Contractor: M. Bowling, Inc.

Plant: 100

2/9/2026 8:25:54 AM

Tech: J. Horsley - F

PC: T. Lewis



Structure ID: WW

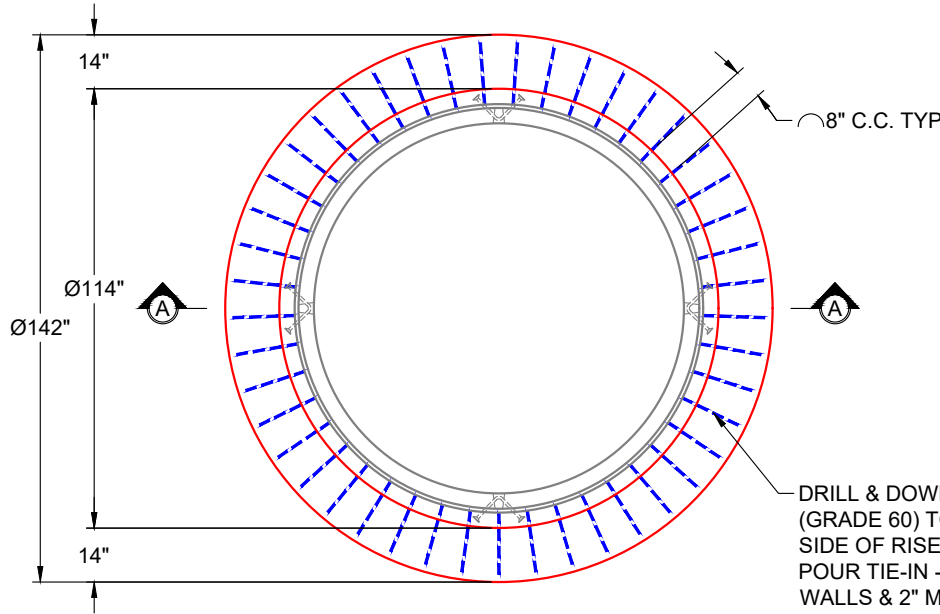
P1 MH096BAEVFCDARED

MH BASE EF Cust. Ht. 15"F (14"EF =142"OD) w/ConBlock-CDA R

P4) 42" x 72" - HATCH (CAST FLUSH) - 3"	0 lb
P3) 96" - MH FLAT TOP w/42"x72" Hatch w/ConBlock-CDA Red F/G - 17"	9530 lb
P2) 96" - MH RISER SPECIAL w/ConBlock-CDA Red T/G - 96"	23645 lb
P1) 96" - MH BASE EF Cust. Ht. 15"F (14"EF =142"OD) w/ConBlock-CDA Red T/n - 74"	38368 lb
1) ADMIXTURE CONBLOCK CDA RED	0 lb
2) JOINT WRAP - 12" WD x 096" MAC WRAP	0 lb
1) HATCH (Alum.) - HALLIDAY W1S 42"x72"	135 lb
1) This Structure Includes a Cast-in Item - Halliday W1S 42" x 72" Hatch	0 lb
1) SECONDARY POUR - BASE FLOOR	0 lb
1) THIRD POUR - EXTENDED FLANGE	0 lb
2) 96" - Conseal CS-231 1.00" (Double)	0 lb
3) PSX - 8QRS-S NYLO	20 lb
1) PSX - 16L NYLO	8 lb
Structure Total:	71706 lb

- Structure Notes:**
- PER ASTM C-478 SPECIFICATIONS
 - CONCRETE: 4,000 PSI AT 28 DAYS
 - REINFORCEMENT: DRILL & DOWEL #5 BAR @ 8" C.C. (GRADE 60) TOP & BOTTOM MAT AS SHOWN
 - NO INVERT CHANNEL
 - CONBLOCK CDA RED ADMIXTURE REQUIRED
 - NO STEPS
 - HALLIDAY W1S 42" X 72" HATCH SUPPLIED BY ICAST - TO BE CAST INTO FLAT LID
 - SEE FIRST POUR DRAWING FOR RISER / WALL DETAILS & SEE SECOND POUR DRAWING FOR FLOOR DETAILS

Rim: 384.54' Rim to Invert: 7.54' Slack: 0.68" Sump: 97.2" Step Position:

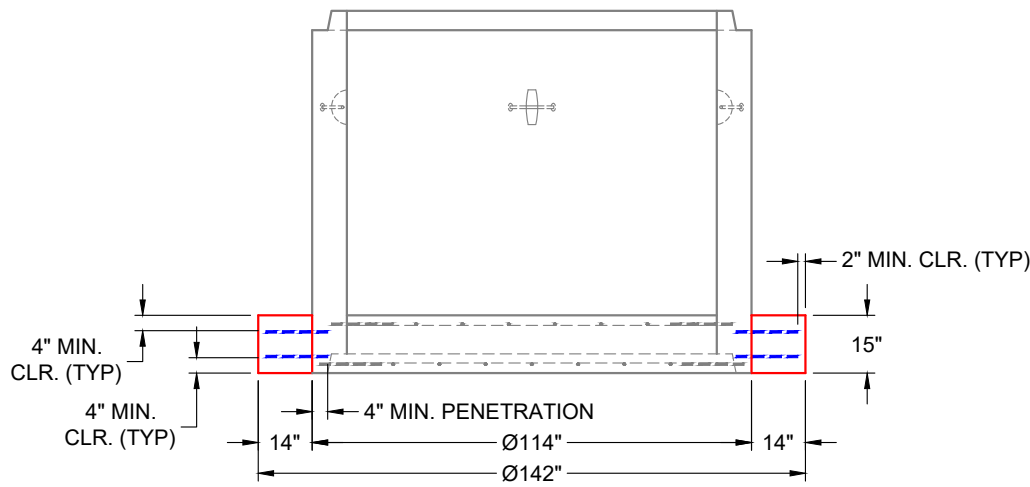


**FIRST POUR (RISER / WALLS):
22,172 LBS**

**SECOND POUR (FLOOR):
9,111 LBS**

**THIRD POUR (EXT. FLANGE):
7,085 LBS**

**PLAN VIEW
(RIGHT SIDE UP)**



**SECTION A-A
(RIGHT SIDE UP)**

Coating (Int): Coating (Ext):	Seam Up: Tongue Seam Dn: n/a	Wall Thickness: 9" Floor Height: 15"	Height (Int): 74" Height (Ext): 89"	Weight (Net): 38368 lb Volume (Net): 9.8cu.yd
----------------------------------	---------------------------------	---	--	--