

Job Name: 25-3576 - HWU Wright St. Pump Station
 Job Location: Henderson, KY
 Contractor: M. Bowling, Inc.

Plant: 100

2/9/2026 8:32:26 AM

Tech: J. Horsley - F

PC: T. Lewis



Structure ID: VV

P2 MH072LD15SCDARED

MH FLAT TOP w/42"x42" Hatch w/ConBlock-CDA Red F/G

- P3) 42" x 42" - HATCH (CAST FLUSH) - 3"
- P2) 72" - MH FLAT TOP w/42"x42" Hatch w/ConBlock-CDA Red F/G - 15"
- P1) 72" - MH DH RISER Custom Ht, w/ConBlock-CDA Red T/F - 69"
- 1) ADMIXTURE CONBLOCK CDA RED
- 1) JOINT WRAP - 0.065"x6"x50" CONSEAL CS212
- 1) JOINT WRAP PRIMER - CONSEAL CS-75 (1 gal.)
- 1) HATCH (Alum.) - HALLIDAY W1S 42"x42"
- 1) This Structure Includes a Cast-in Item - Halliday W1S 42" x 42" Hatch
- 1) 72" - Conseal CS-102 1.00" (Double)
- 4) PSX - 8QRS-S NYLO
- 1) DOGHOUSE - 8"x8"

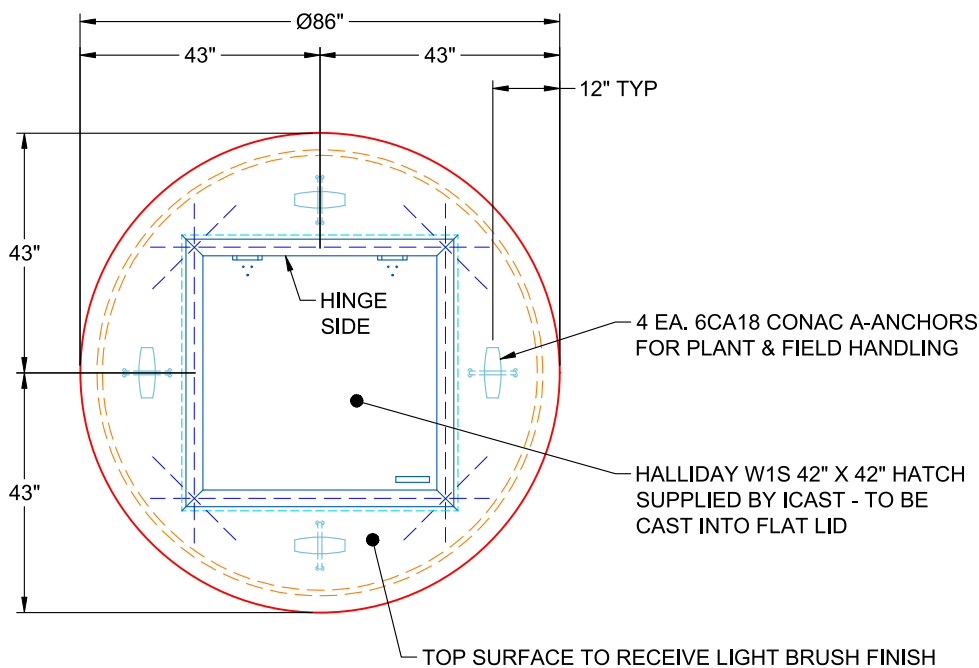
0 lb
 5200 lb
 9891 lb
 0 lb
 0 lb
 0 lb
 108 lb
 0 lb
 0 lb
 26 lb
 0 lb

 15225 lb

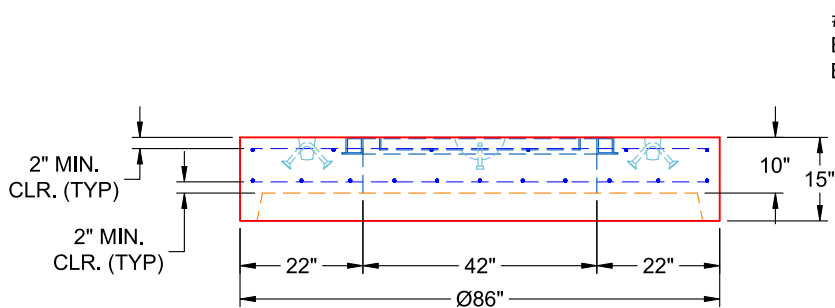
Structure Notes:

1. PER ASTM C-478 SPECIFICATIONS
2. CONCRETE: 4,000 PSI AT 28 DAYS
3. REINFORCEMENT - 2" MIN. REBAR CLEARANCE (TYP):
 - TOP MAT: #4 BAR @ 18" C.C. E.W. (GRADE 60)
 - BOTTOM MAT: #4 BAR @ 9" C.C. E.W. (GRADE 60)
4. CONBLOCK CDA RED ADMIXTURE REQUIRED
5. HALLIDAY W1S 42" X 42" HATCH SUPPLIED BY ICAST - TO BE CAST INTO FLAT LID
6. LIFTERS: 4 EA. 6CA18 CONAC A-ANCHORS FOR PLANT & FIELD HANDLING
7. TOP SURFACE TO RECEIVE LIGHT BRUSH FINISH

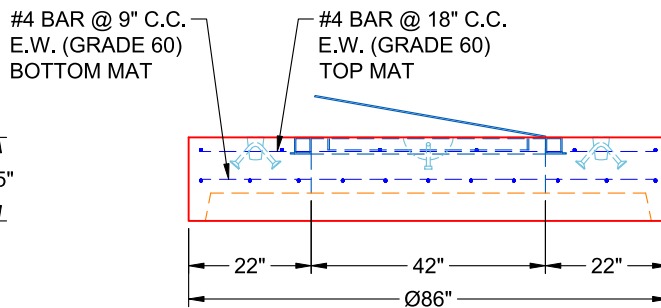
Structure Total:



**PLAN VIEW
(RIGHT SIDE UP)**



**FRONT VIEW
(RIGHT SIDE UP)**



**SIDE VIEW
(RIGHT SIDE UP)**

Coating (Int):
 Coating (Ext):

Seam Up: Flat
 Seam Dn: Groove

Wall Thickness: 7"

Height (Ext): 15"

Weight (Net): 5091 lb
 Volume (Net): 1.3cu.yd

Job Number:

25-3576

Job Name:

HWU Wright St. Pump Station

Structure:

VV

Note:

Halliday W1S 42" x 42" Hatch
Supplied By iCast To Be Cast Into
Flat Lid