

**Job Name: 25-3560 Stephens Behavioral Consulting**  
**Job Location: Shelbyville, KY**  
**Contractor: Joda International Inc.**

PC: T. Lewis  
 TECH: S. Felletter  
 Plant: Beaver Dam



Structure ID: **JB-10**  
 Spec: Storm  
 Type: STM.MH (Recessed pipe)  
 Size: 48"

Rim: 753'  
 Invert: 746.48'  
 Rim to Invert: 6.52'

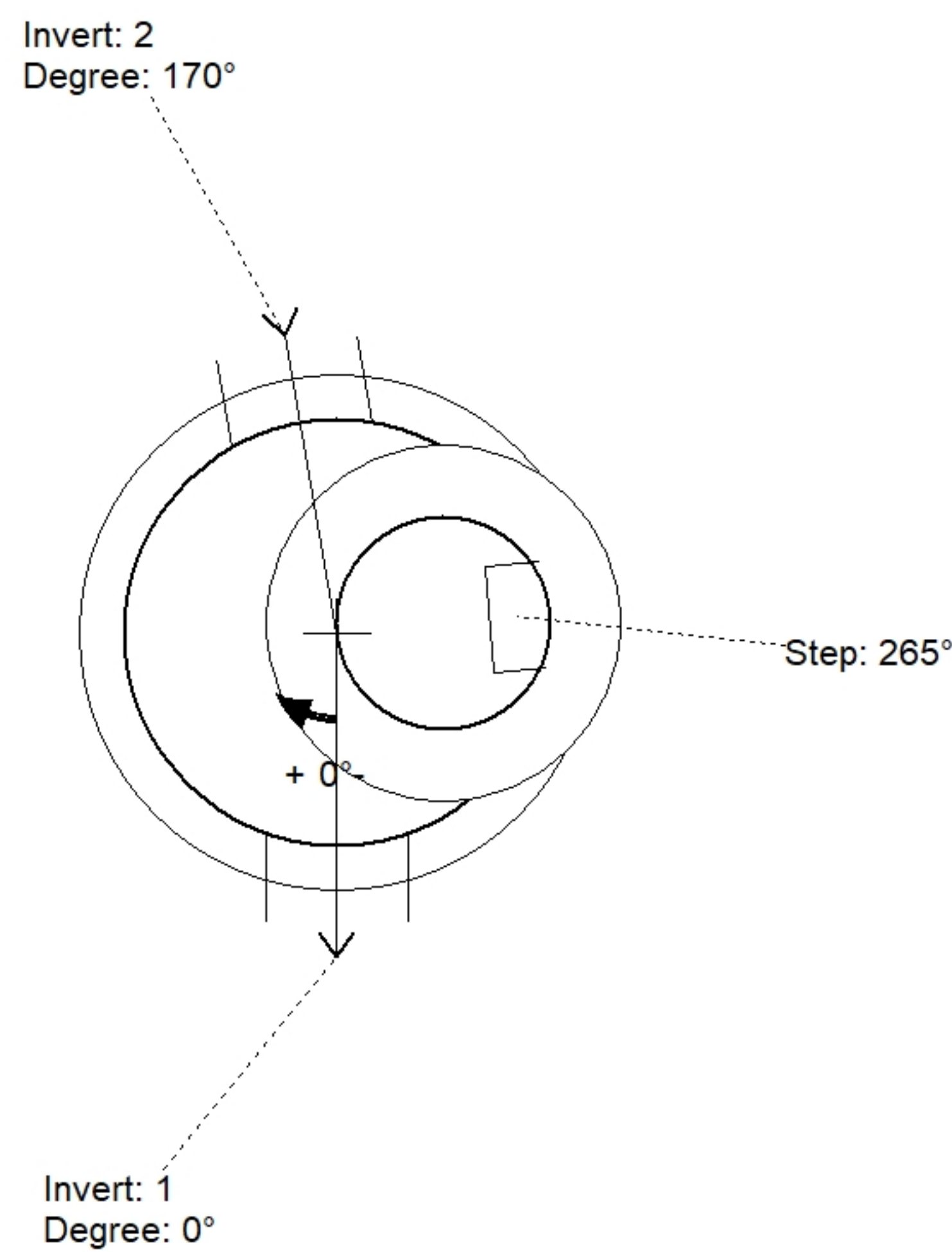
Sump: 0"  
 Floor (Top): 746.48'  
 Floor Height: 6"

Floor (Bot): 745.98'  
 Overall Height: 6.917'  
 Slack: 1.24"

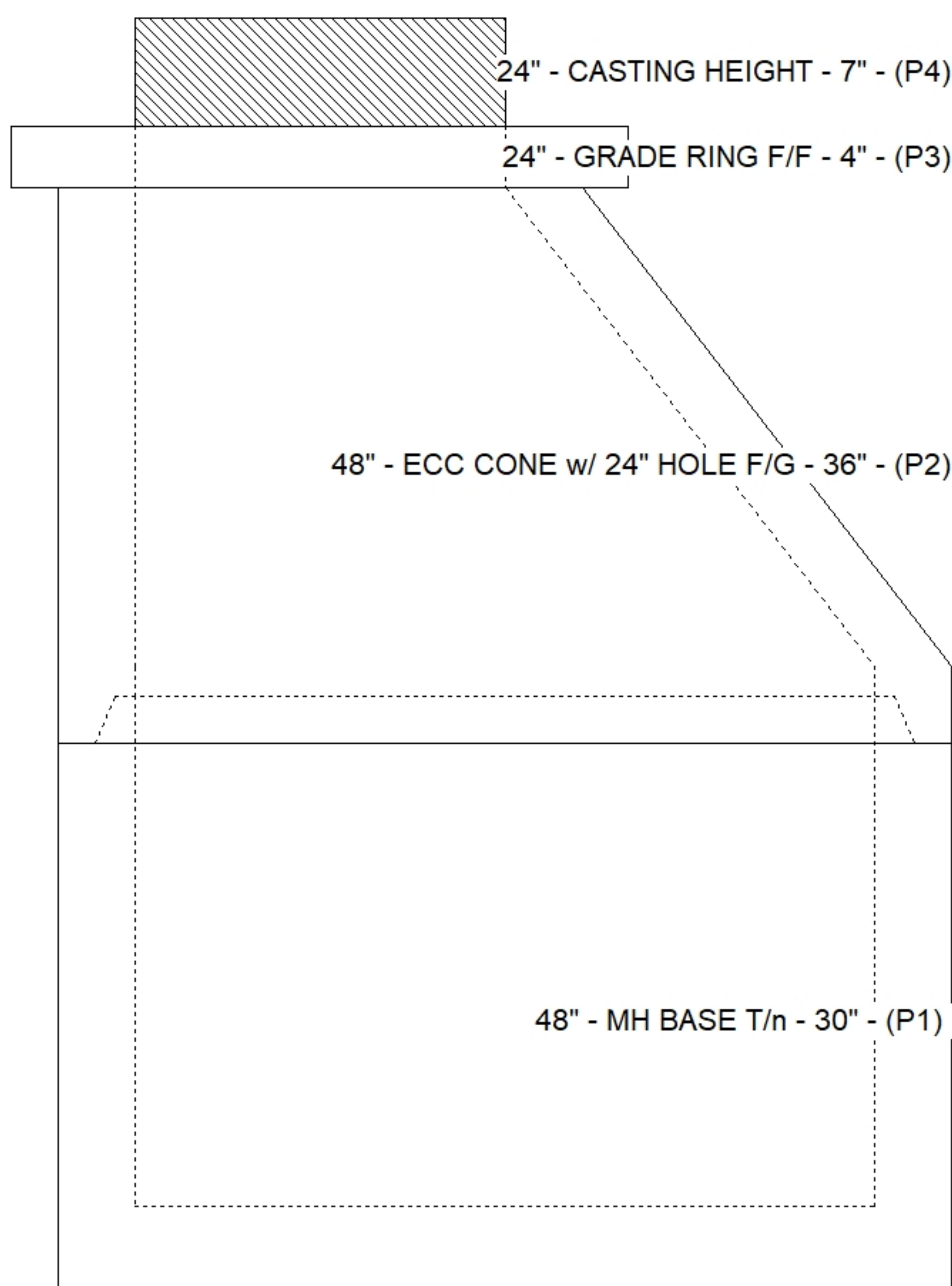
- Structure Notes:**
- PER ASTM C478 SPECIFICATIONS.
  - CONCRETE = 4,000 PSI AT 28 DAYS.
  - REINFORCING PER ASTM A615 (GRADE 60).  
 - TOP SLAB (As .62) #5 BARS AT 6" C.C.E.W..  
 - RISER/WALLS (As .12)  
 - FLOOR (As .31) #5 BARS AT 12" C.C.E.W.
  - CASTING HOE MC-420 F/C "STORM" BY ICAST.

**STRUCTURE SUMMARY:**

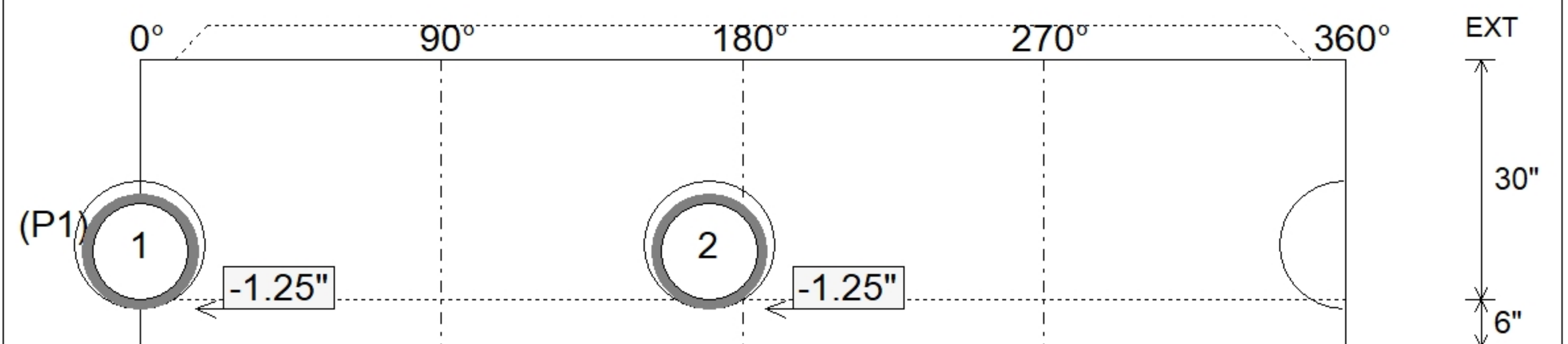
P4) 24" - CASTING HEIGHT - 7"	0 lb
P3) 24" - GRADE RING F/F - 4"	270 lb
P2) 48" - ECC CONE w/ 24" HOLE F/G - 36"	3000 lb
P1) 48" - MH BASE T/n - 30"	3255 lb
1) 48" - Conseal CS-102 1.00"	0 lb
2) Hole - 16	0 lb
6) MH Step ML-10-TDS-NCR - 10"	0 lb
<b>Structure Total:</b>	<b>6524 lb</b>



Position	Elev	Angle	Pipe	Pipe OD	Hole	Connector	Up ( )	Ref
Rim	753'							
Reducer								
Invert 1	746.48'	0°	12" HDPE	14.5"	16"	Hole 16	-1.25"	P1
Invert 2	746.48'	170°	12" HDPE	14.5"	16"	Hole 16	-1.25"	P1
Invert 3								
Invert 4								
Invert 5								
Invert 6								
Invert 7								
Invert 8								



**Default - Interior Dimensions**



Submittal Drawing  
 2/9/2026 9:19:39 AM

SUBMITTAL  
 APPROVED BY: