

Job Name: 25-3560 Stephens Behavioral Consulting  
 Job Location: Shelbyville, KY  
 Contractor: Joda International Inc.

Plant: Beaver Dam  
 2/6/2026 2:20:20 PM

Tech: S. Felletter  
 PC: T. Lewis



**Structure ID: CBI-11**

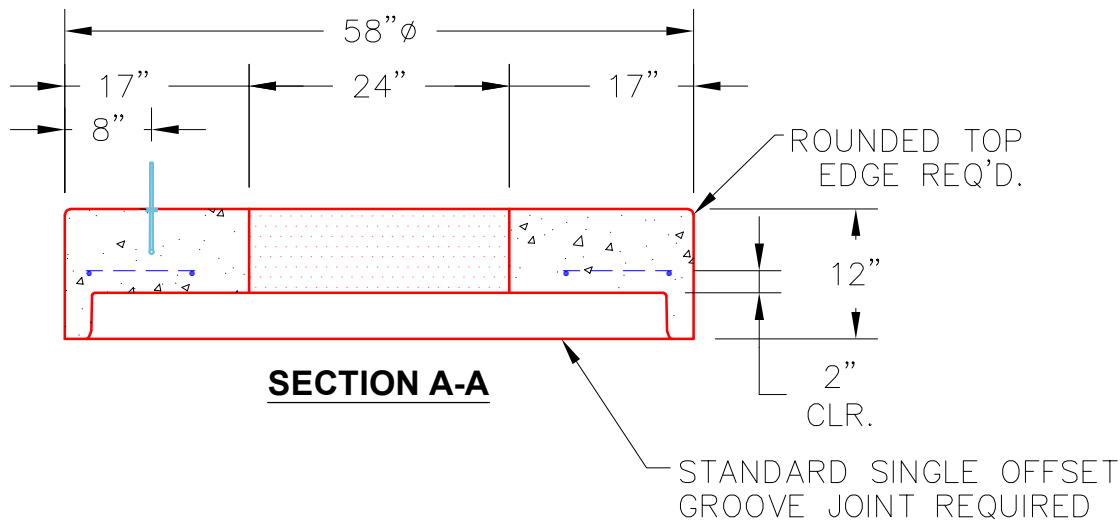
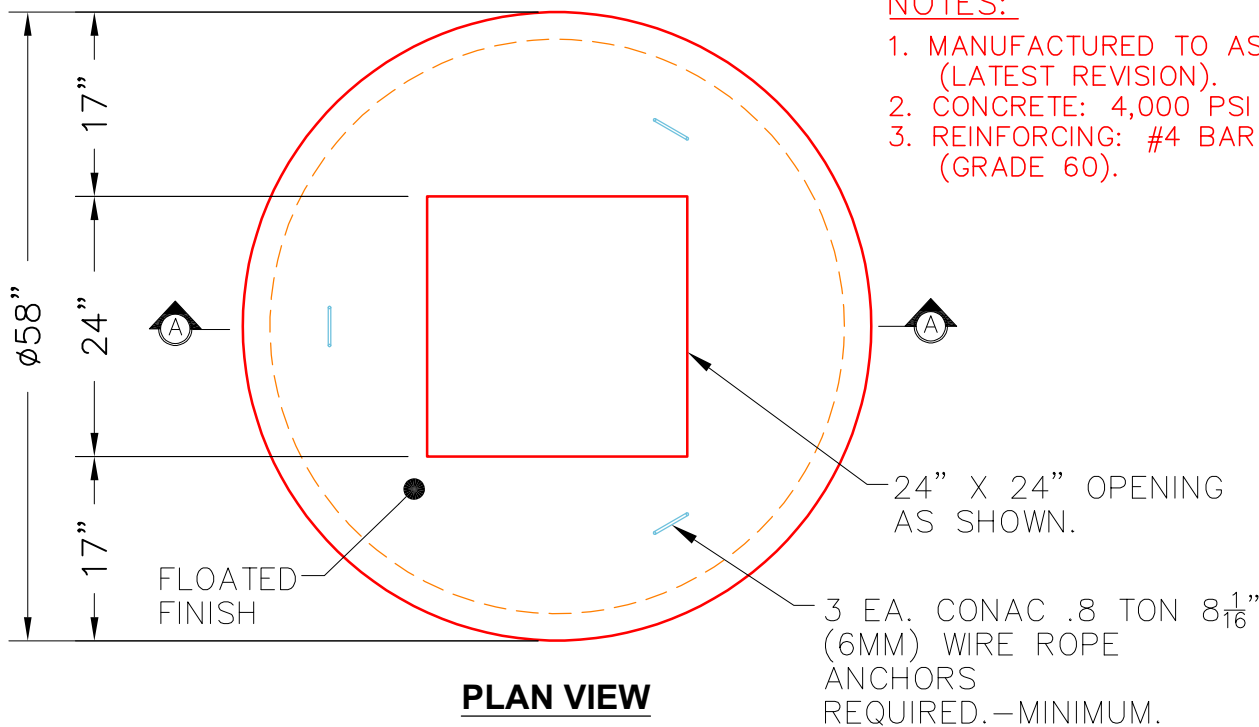
**P2 MH048LD12-24SQ**

**MH FLAT TOP w/24"x24" Hole F/G**

- P3) 24" x 24" - CASTING HEIGHT - 5"
- P2) 48" - MH FLAT TOP w/24"x24" Hole F/G - 12"
- P1) 48" - MH BASE T/n - 30"
- 1) 48" - Conseal CS-102 1.00"
- 1) 24" x 24" - Conseal CS-102 1.00"
- 2) Hole - 16
- 1) Hole - 12
- 3) MH Step ML-10-TDS-NCR - 10"

0 lb  
 1500 lb  
 3140 lb  
 0 lb  
 0 lb  
 0 lb  
 0 lb  
 0 lb  
 -----  
 Structure Total: 4640 lb

- Structure Notes:**
1. PER ASTM C478 SPECIFICATIONS.
  2. CONCRETE = 4,000 PSI AT 28 DAYS.
  3. REINFORCING PER ASTM A615 (GRADE 60).  
 - TOP SLAB (As .62) #5 BARS AT 6" C.C.E.W..  
 - RISER/WALLS (As .12)  
 - FLOOR (As .31) #5 BARS AT 12" C.C.E.W.
  4. CASTING HOE KY-465 PROVIDED BY ICAST.



Coating (Int):  
 Coating (Ext):

Seam Up: Flat  
 Seam Dn: Groove

Wall Thickness: 5"

Height (Ext): 12"

Weight (Net): 1500 lb  
 Volume (Net): 0.37cu.yd