



Structure ID: HW 2-1

P1 HWA8

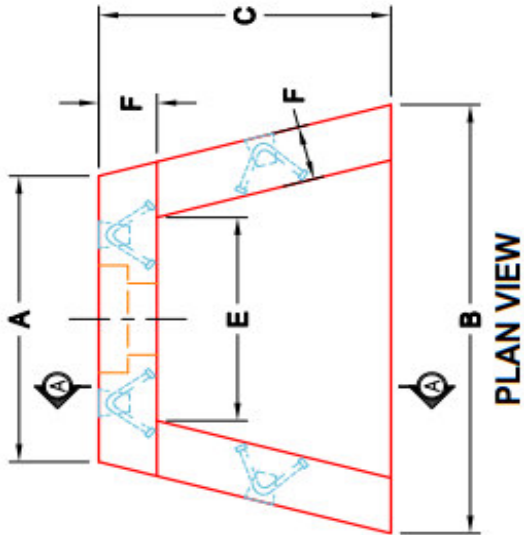
8" - HW AW w/FOOTER F/F

**DIMENSIONS & QUANTITIES**

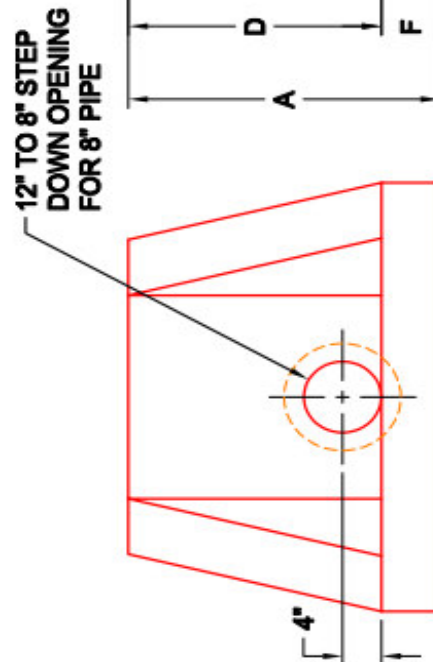
TYPE	PIPE Ø	A	B	C	D	E	F	OPENING SIZE	WEIGHT
AW	8"	2'-8"	4'-0"	2'-6"	2'-2"	2'-0"	6"	12" TO 8" STEP	1,380 LBS

NOTES:

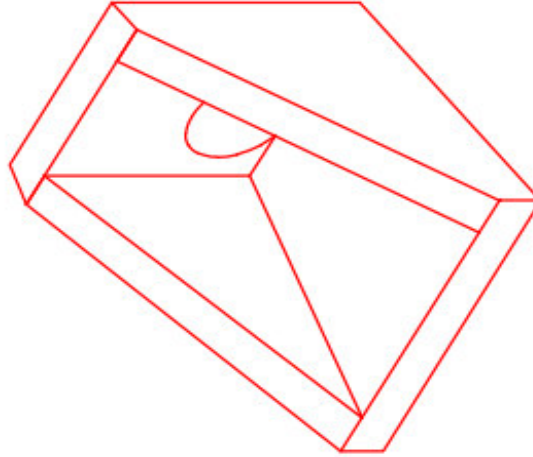
1. CONCRETE: 4500 PSI AT 28 DAYS MINIMUM COMPRESSIVE STRENGTH.
2. REINFORCING: #4 BAR @ 12" C/C E.W. - GRADE 60, (WITH 2" CONCRETE COVER MINIMUM)
3. REINFORCING BARS TO BE TACK WELDED OR TIED.
4. PIPE AND LIFTING ANCHOR POCKETS TO BE GROUTED WITH NON-SHRINK GROUT AFTER SETTING.



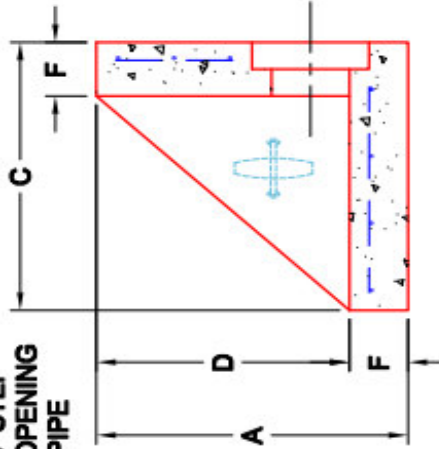
**PLAN VIEW**



**FRONT ELEVATION**



**ISOMETRIC VIEW**



**SECTION A-A**

SUBMITTAL DRAWING: 8" AW HW	
CUSTOMER: LAGCO INC	
PROJECT: GATES FORD NEW TRUCK SERVICE SHOP	
STRUCTURE: HW 2-1	
QUOTE/SALES ORDER NO: 25-3555	
PC: T. LEWIS	DRAWN BY: FMT
DATE: 03/20/26	SCALE: NTS
	PG. 1 of 1



**REVISION INFORMATION**

REV. Δ	DATE	NO REVISIONS TO DATE