

Job Name: 25-3555 - Gates Ford New Truck Service Shop
Job Location: Richmond, KY 40475
Contractor: Lagco Inc.

PC: T. Lewis
 TECH: Jared - F
 Plant: 100



Structure ID: **1-53555**
 Spec: Grease Traps
 Type: GT 500 GAL.
 Size: 48" x 48"

Rim: 6.25'
 Invert: 3.667'
 Rim to Invert: 2.583'

Sump: 44.004"
 Floor (Top): 0'
 Floor Height: 8"

Floor (Bot): -0.667'
 Overall Height: 6.917'
 Slack: 0"

Structure Notes:

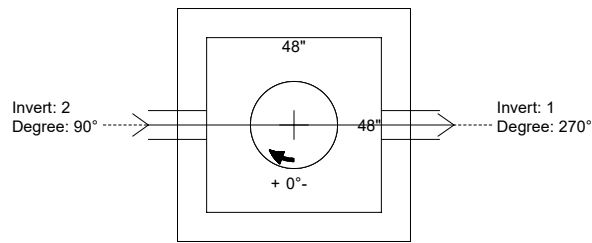
1. PER ASTM C-913 SPECIFICATIONS
2. CONCRETE: 4,000 PSI AT 28 DAYS
3. REINFORCEMENT:
 - FLAT LID: #5 BAR @ 6" C.C. E.W. (GRADE 60)
 - BASE: #5 BAR @ 8" C.C. E.W. (GRADE 60)
4. NO FLOW CHANNEL
5. NO STEPS
6. HOE MC-315 FRAME & COVER "GREASE TRAP" SUPPLIED BY ICAST
7. THIS STRUCTURE CONTAINS A BAFFLE WALL - SEE PG 2 OF 2 FOR BAFFLE WALL DETAILS
8. INTERNAL PIPING BY OTHERS

STRUCTURE SUMMARY:

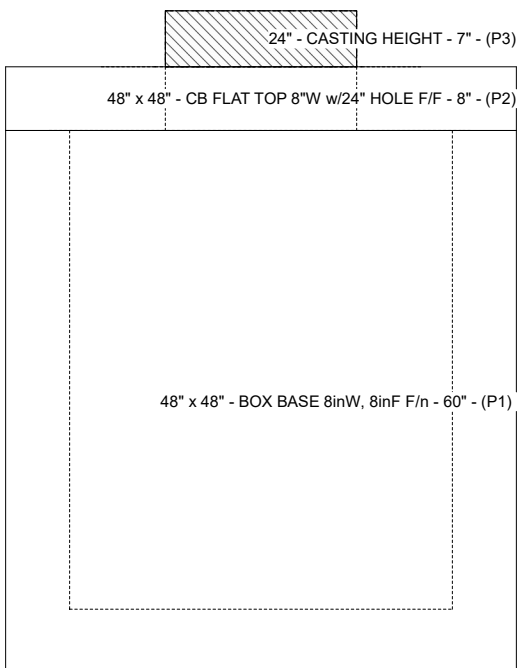
- P3) 24" - CASTING HEIGHT - 7"
 - P2) 48" x 48" - CB FLAT TOP 8"W w/24" HOLE F/F - 8"
 - P1) 48" x 48" - BOX BASE 8inW, 8inF F/n - 60"
- 1) CASTING - HOE MC-315 F/C Grease
 - 1) SECONDARY POUR - 48" x 57" x 4" Baffle Wall
 - 1) 48" x 48" - Conseal CS-102 1.00" (Double)
 - 2) Kor-N-Seal1 - S106-8SRWS
- 0 lb
 2446 lb
 11704 lb
 258 lb
 880 lb
 0 lb
 13 lb

Structure Total: 15301 lb

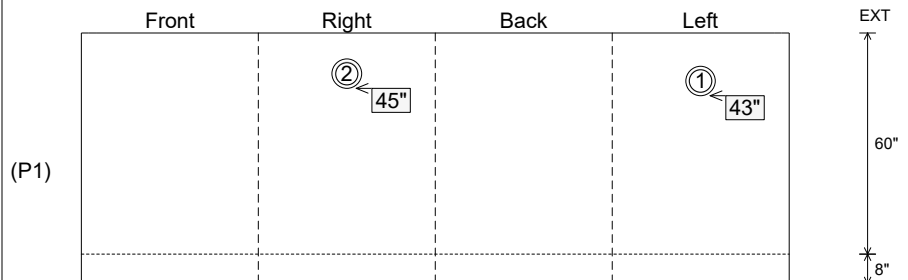
PG. 1 OF 2



Position	Elev	Angle	Pipe	Pipe OD	Hole	Connector	Up (")	Ref
Rim	6.25'							
Reducer								
Invert 1	3.667'	270°	6" PVC SDR35	6.25"	8"	Kor-N-Seal1 S106-8SRWS	43"	P1
Invert 2	3.833'	90°	6" PVC SDR35	6.25"	8"	Kor-N-Seal1 S106-8SRWS	45"	P1
Invert 3								
Invert 4								
Invert 5								
Invert 6								
Invert 7								
Invert 8								



Cast (Int. Dim.) - Interior Dimensions

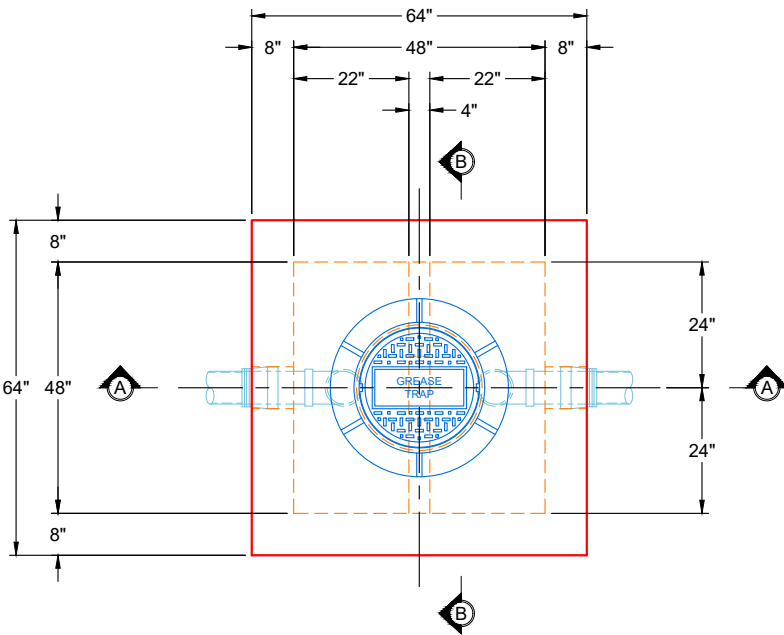


Submittal Drawing
 4/24/2026 9:58:26 AM

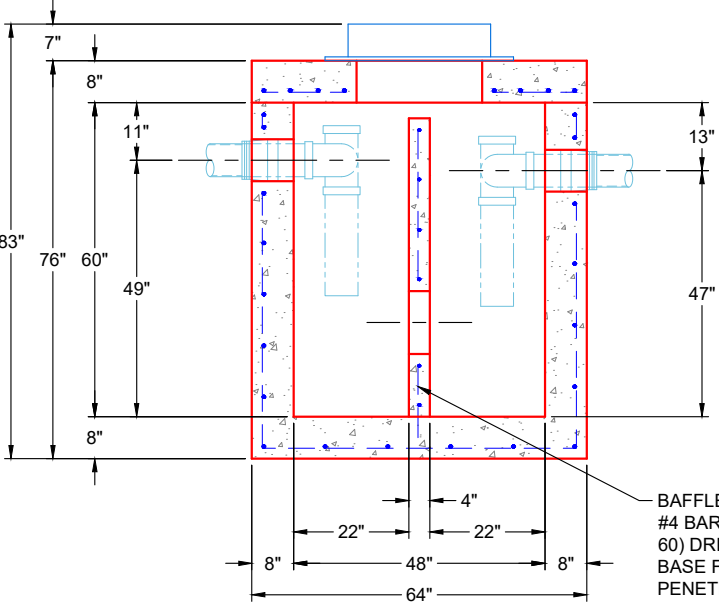
SUBMITTAL
 APPROVED BY:

GENERAL NOTES:

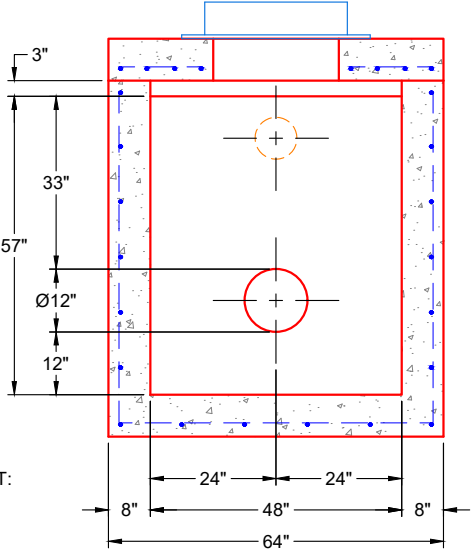
1. PER ASTM C-913 SPECIFICATIONS
2. CONCRETE: 4,000 PSI AT 28 DAYS
3. BAFFLE WALL REINFORCEMENT: #4 BAR @ 12" C.C. E.W. (GRADE 60) DRILLED & DOWELED INTO BASE FLOOR, MIN. 4" PENETRATION
4. WEIGHTS
 60" BASE: 11,704 LBS
 48" X 57" X 4" BAFFLE WALL: 880 LBS
TOTAL WEIGHT: 12,584 LBS



PLAN VIEW



SECTION A-A



SECTION B-B

BAFFLE WALL REINFORCEMENT:
 #4 BAR @ 12" C.C. E.W. (GRADE 60) DRILLED & DOWELED INTO BASE FLOOR, MIN. 4" PENETRATION

REVISIONS	
REV. 0	DATE: NO REVISIONS TO DATE



SUBMITTAL DRAWING: 48" X 57" X 4" BAFFLE WALL		
CUSTOMER: LAGCO, INC.		
PROJECT: GATES FORD NEW TRUCK SERVICE SHOP		
STRUCTURE: 1-53555		
SALES ORDER NO: 25-3555		
CHECKED BY: B. SMITH	DRAWN BY: K. CARDWELL	
DATE: 04/24/26	SCALE: NTS	PG. 2 OF 2

THIS DRAWING IS THE PROPERTY OF INFRASTRUCTURE PRECAST, INC. ANY USE OR DUPLICATION OF THIS DRAWING WITHOUT PRIOR AUTHORIZATION IS STRICTLY PROHIBITED.