

Job Name: 25-3555 - Gates Ford New Truck Service Shop
 Job Location: Richmond, KY 40475
 Contractor: Lagco Inc.

Plant: 100

4/24/2026 10:23:47 AM

Tech: Jared - F

PC: T. Lewis



Structure ID: 1-53555

P1 BX4848-08BA60

BOX BASE 8inW, 8inF F/n

- P3) 24" - CASTING HEIGHT - 7"
- P2) 48" x 48" - CB FLAT TOP 8"W w/24" HOLE F/F - 8"
- P1) 48" x 48" - BOX BASE 8inW, 8inF F/n - 60"
- 1) CASTING - HOE MC-315 F/C Grease
- 1) SECONDARY POUR - 48" x 57" x 4" Baffle Wall
- 1) 48" x 48" - Conseal CS-102 1.00" (Double)
- 2) Kor-N-Seal1 - S106-8SRWS

0 lb
 2446 lb
 11704 lb
 258 lb
 880 lb
 0 lb
 13 lb

 Structure Total: 15301 lb

Structure Notes:

1. PER ASTM C-913 SPECIFICATIONS
2. CONCRETE: 4,000 PSI AT 28 DAYS
3. REINFORCEMENT: #5 BAR @ 8" C.C. E.W. (GRADE 60) - 2" MIN. REBAR CLEARANCE (TYP)
4. NO FLOW CHANNEL
5. NO STEPS
6. HOE MC-315 FRAME & COVER "GREASE TRAP" SUPPLIED BY ICAST
7. THIS STRUCTURE CONTAINS A BAFFLE WALL - SEE SECOND POUR DRAWING FOR BAFFLE WALL DETAILS
8. INTERNAL PIPING BY OTHERS

FIRST POUR (BASE): 11,704 LBS

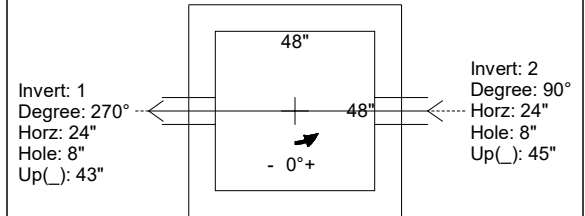
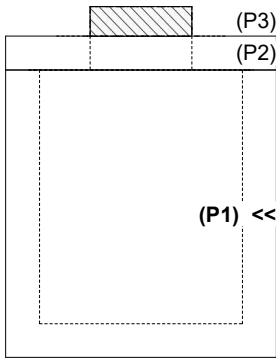
SECOND POUR (BAFFLE WALL): 880 LBS

Rim: 6.25' Rim to Invert: 2.583' Slack: 0" Sump: 44.004" Step Position:

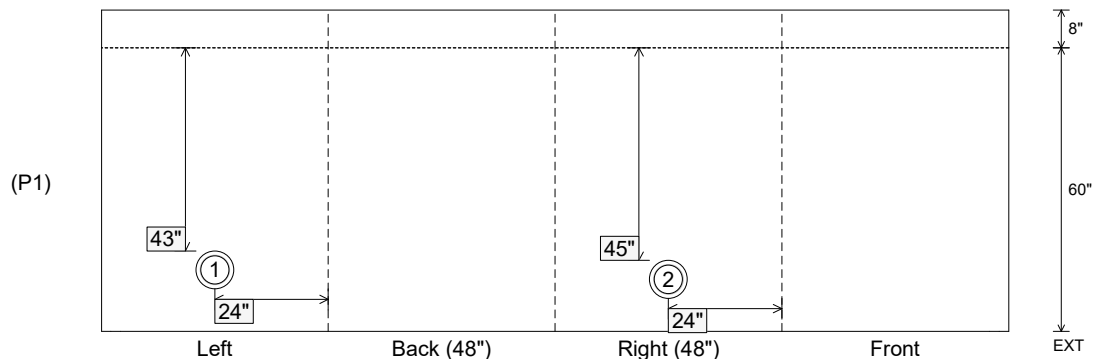
Position	Elev	Angle	Ext. (cw)	Pipe	Pipe OD	Connector	Hole	Horz Size	Up ()	Offset
Invert 1	3.667'	270°	32"	6" PVC SDR35	6.25"	Kor-N-Seal1 S106-8SRWS	8"	8"	43"	0"
Invert 2	3.833'	90°	32"	6" PVC SDR35	6.25"	Kor-N-Seal1 S106-8SRWS	8"	8"	45"	0"
Invert 3										
Invert 4										
Invert 5										
Invert 6										
Invert 7										
Invert 8										

RIGHT-SIDE UP VIEW (int. dimensions)

UPSIDE-DOWN VIEW (int. dimensions)



INSIDE WALL DIMENSIONS



Coating (Int):
 Coating (Ext):

Seam Up: Flat
 Seam Dn: n/a

Wall Thickness: 8"
 Floor Height: 8"

Height (Int): 60"
 Height (Ext): 68"

Weight (Net): 11704 lb
 Volume (Net): 2.99cu.yd

Job Name: 25-3555 - Gates Ford New Truck Service Shop
 Job Location: Richmond, KY 40475
 Contractor: Lagco Inc.

Plant: 100

Tech: Jared - F

4/24/2026 10:23:47 AM

PC: T. Lewis



Structure ID: 1-53555

P1 BX4848-08BA60

SECONDARY POUR - 48" X 57" X 4" BAFFLE WALL

- P3) 24" - CASTING HEIGHT - 7"
- P2) 48" x 48" - CB FLAT TOP 8"W w/24" HOLE F/F - 8"
- P1) 48" x 48" - BOX BASE 8inW, 8inF F/n - 60"
- 1) CASTING - HOE MC-315 F/C Grease
- 1) SECONDARY POUR - 48" x 57" x 4" Baffle Wall
- 1) 48" x 48" - Conseal CS-102 1.00" (Double)
- 2) Kor-N-Seal1 - S106-8SRWS

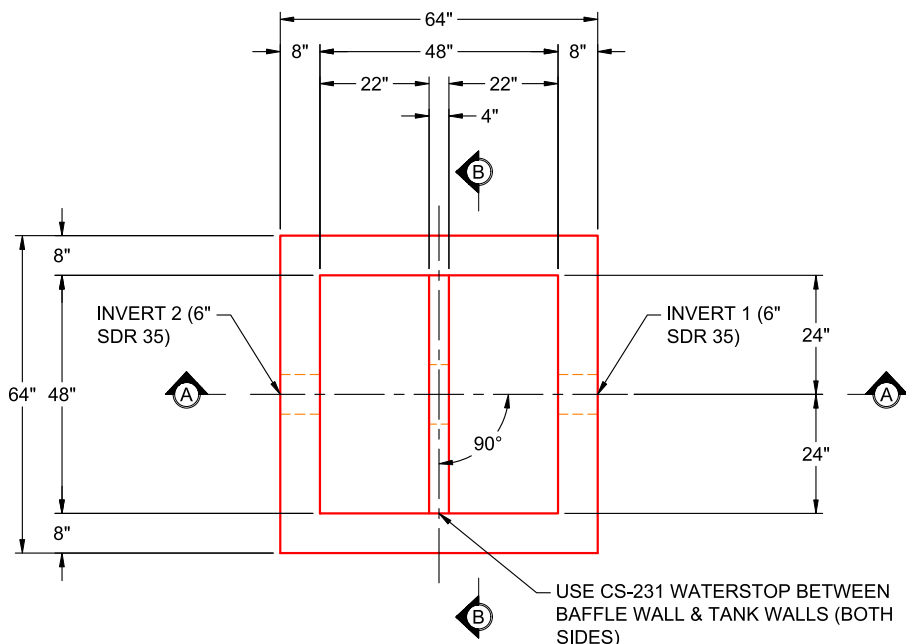
0 lb
 2446 lb
 11704 lb
 258 lb
 880 lb
 0 lb
 13 lb

 Structure Total: 15301 lb

- Structure Notes:**
1. PER ASTM C-913 SPECIFICATIONS
 2. CONCRETE: 4,000 PSI AT 28 DAYS
 3. REINFORCEMENT: DRILL & DOWEL #4 BAR @ 12" C.C. E.W. (GRADE 60) INTO BASE FLOOR - 1.5" MIN. REBAR CLEARANCE & 4" MIN. PENETRATION INTO BASE FLOOR
 4. SEE FIRST POUR DRAWING FOR BASE DETAILS

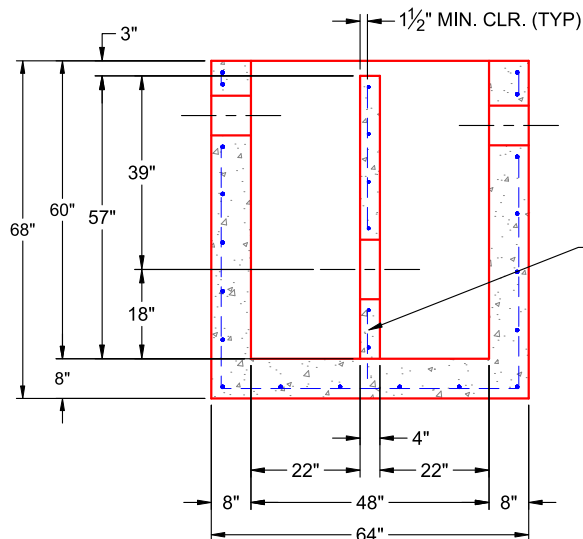
FIRST POUR (BASE): 11,704 LBS
SECOND POUR (BAFFLE WALL): 880 LBS

Rim: 6.25' Rim to Invert: 2.583' Slack: 0" Sump: 44.004" Step Position:



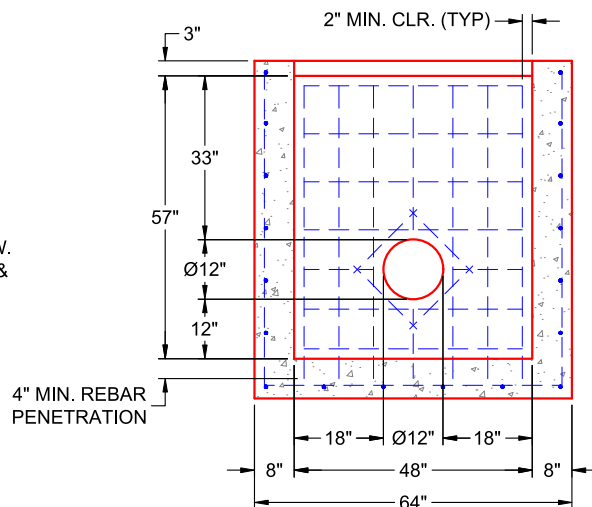
**PLAN VIEW
(RIGHT SIDE UP)**

USE CS-231 WATERSTOP BETWEEN BAFFLE WALL & TANK WALLS (BOTH SIDES)



**SECTION A-A
(RIGHT SIDE UP)**

#4 BAR @ 12" C.C. E.W. (GRADE 60) DRILLED & DOWELED INTO BASE FLOOR, MIN. 4" PENETRATION



**SECTION B-B
(RIGHT SIDE UP)**

4" MIN. REBAR PENETRATION