

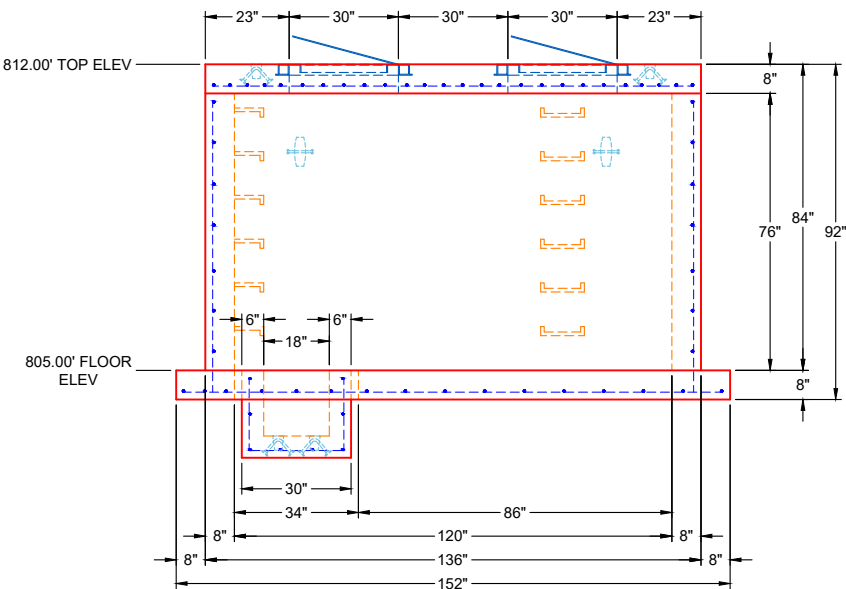
PLAN VIEW

2 EA. HALLIDAY H1R 30" X 48" HATCHES SUPPLIED BY ICAST - TO BE CAST INTO FLAT LID

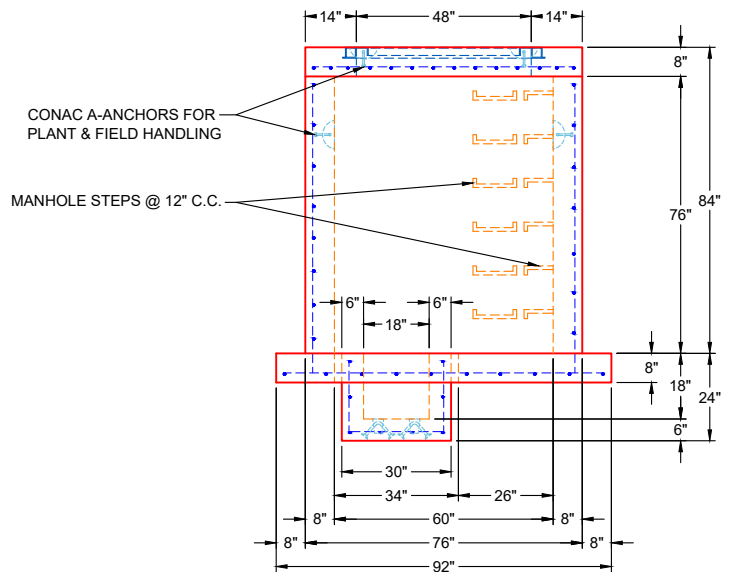
GENERAL NOTES:

1. MANUFACTURED TO ASTM C-913 (LATEST REVISION)
2. CONCRETE: 5,000 PSI AT 28 DAYS
3. REINFORCEMENT
 - FLAT LID: #5 BAR @ 6" C.C. E.W. (GRADE 60)
 - BASE W/ EXT. FLANGE: #5 BAR @ 12" C.C. E.W. (GRADE 60)
 - SUMP PIT: #4 BAR @ 12" C.C. E.W. (GRADE 60)
4. WEIGHTS:

8" FLAT LID	5,305 LBS
76" BASE W/ 8" EXT. FLANGE	29,387 LBS
18" X 18" X 18" SUMP PIT	1,323 LBS
TOTAL WEIGHT	36,015 LBS
5. CONTRACTOR TO VERIFY ALL DIMENSIONS BEFORE MANUFACTURE
6. 2 EA. HALLIDAY H1R 30" X 48" HATCHES SUPPLIED BY ICAST - TO BE CAST INTO FLAT LID
7. JOINT SEALANT: CONSEAL CS-102 - 1" (PRIMARY & SECONDARY ROWS)
EXTERIOR WRAP: CONSEAL CS-212 - 6" WIDE
8. ALL OPENINGS TO BE FIELD CORED BY OTHERS
9. CARBOLINE 300M INTERIOR COATING SUPPLIED BY ICAST



FRONT VIEW



SIDE VIEW

REVISION INFORMATION	
REV. DATE:	NO REVISIONS TO DATE



SUBMITTAL DRAWING: 60" X 120" VAULT		
CUSTOMER: COVENANT CONSTRUCTORS, LLC		
PROJECT: PUMP STATION RETROFIT (THOMPSON STATION)		
STRUCTURE: VV		
QUOTE/SALES ORDER NO: 25-3538		
CHECKED BY: B. SMITH	DRAWN BY: K. CARDWELL	
DATE: 01/15/26	SCALE: NTS	PG. 1 OF 1