

Job Name: 25-3531 - Crescent Hill Filtration Plant Carbon Storage
 Job Location: Louisville, KY
 Contractor: Dugan & Meyers, LLC

Plant: Beaver Dam, KY
 3/30/2026 9:44:46 AM

Tech: K. Cardwell
 PC: J. Jarvis



Structure ID: V-008

P3 BX060120-00RVF

BOX RISER 8inW, Variable Ht

- P5) 60" x 120" - HATCH (CAST FLUSH) - 3"
- P4) 60" x 120" - BX FLAT TOP 8"W w/60"x120" HATCH - 8"
- P3) 60" x 120" - BOX RISER 8inW, Variable Ht - 38"
- P2) 60" x 120" - BOX RISER 8inW, Variable Ht - 47"
- P1) 60" x 120" - BX Separate Base Slab - 8"
- 1) HATCH (Alum.) - HALLIDAY H2R 48"x48"
- 1) This Structure Includes a Cast-In Item (Hatch)
- 4) 60" x 120" - Conseal CS-102 1.00"
- 1) DOGHOUSE - 44"x44"
- 2) Hole - 6.5
- 1) Hole - 11
- 8) MH Step ML-10-TDS-NCR - 10"

Structure Notes:
 1. PER ASTM C913 SPECIFICATIONS.
 2. CONCRETE = 4,000 PSI AT 28 DAYS.
 3. NO INVERT CHANNEL.

REINFORCING PER ASTM A615 (GRADE 60).
 - TOP SLAB (As .62) #5 BARS AT 6" C.C.E.W.
 - WALLS (As .31) #5 BARS AT 12" C.C.E.W.
 - FLOOR (As .31) #5 BARS AT 12" C.C.E.W.

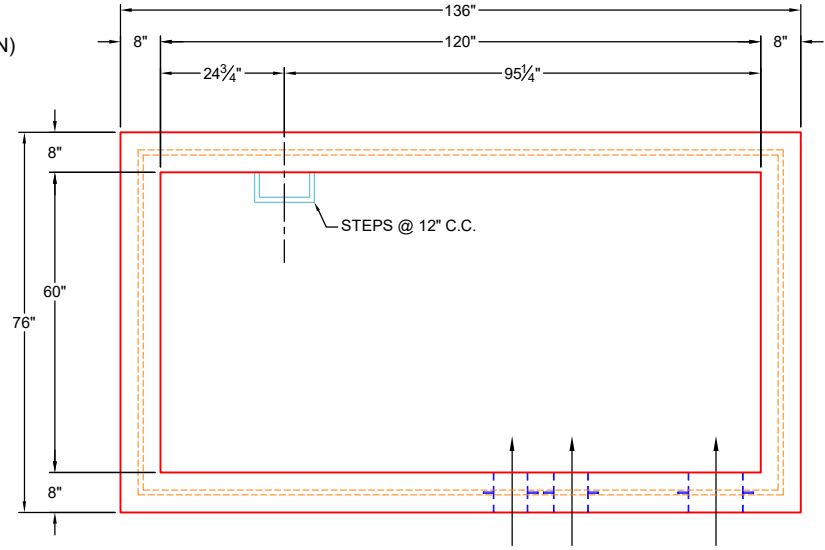
100 lb
 2105 lb
 9891 lb
 11241 lb
 6085 lb
 235 lb
 0 lb
 0 lb
 0 lb
 0 lb
 0 lb
 0 lb
 0 lb
 Structure Total: 29658 lb

Structure Total: 29658 lb

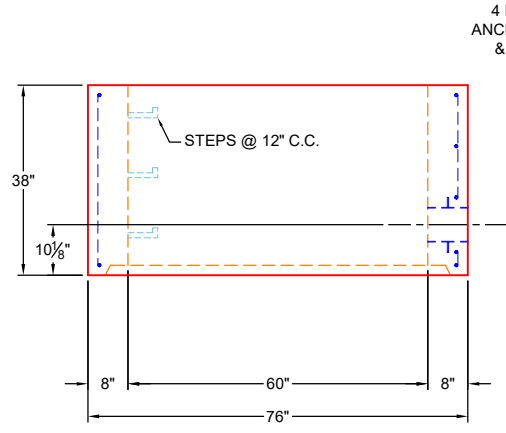
Rim: 561.48' Rim to Invert: 7.55' Slack: 0.48" Sump: 2.88" Step Position: 0°

GENERAL NOTES:

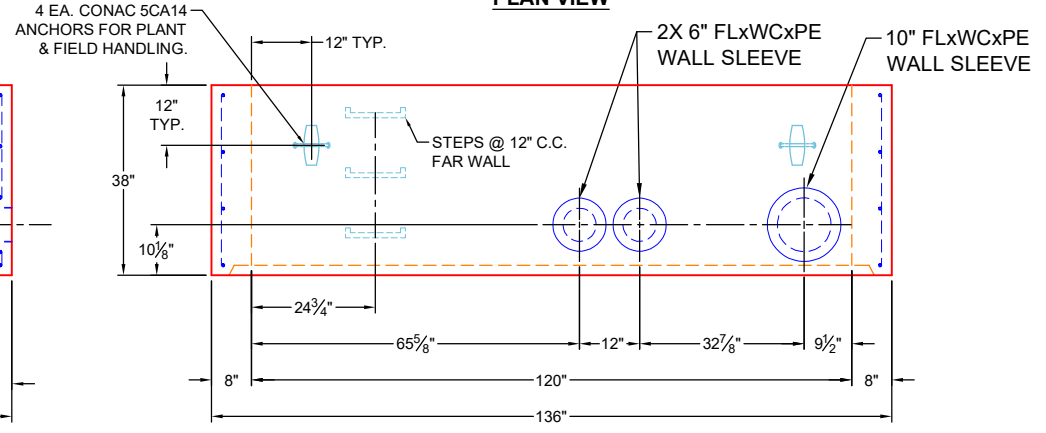
1. MANUFACTURED TO ASTM C-913 (LATEST REVISION) & DESIGNED TO MEET ASTM C857 & ACI 318 REQUIREMENTS.
2. CONCRETE: 5,000 PSI AT 28 DAYS
3. REINFORCEMENT
 - WALLS: #5 BAR @ 12" C.C. E.W. (GRADE 60)
4. JOINT SEALANT: CONSEAL CS-102



PLAN VIEW



LEFT VIEW



FRONT VIEW

Coating (Int):
 Coating (Ext):

Seam Up: Flat
 Seam Dn: Groove

Wall Thickness: 8"
 Floor Height: 0"

Height (Int): 38"
 Height (Ext): 38"

Weight (Net): 9891 lb
 Volume (Net): 2.53cu.yd