

Job Name: 25-3531 - Crescent Hill Filtration Plant Carbon Storage
 Job Location: Louisville, KY
 Contractor: Dugan & Meyers, LLC

Plant: Beaver Dam, KY
 3/30/2026 9:44:45 AM

Tech: K. Cardwell
 PC: J. Jarvis



Structure ID: V-008

P2 BX060120-00RVF

BOX RISER 8inW, Variable Ht

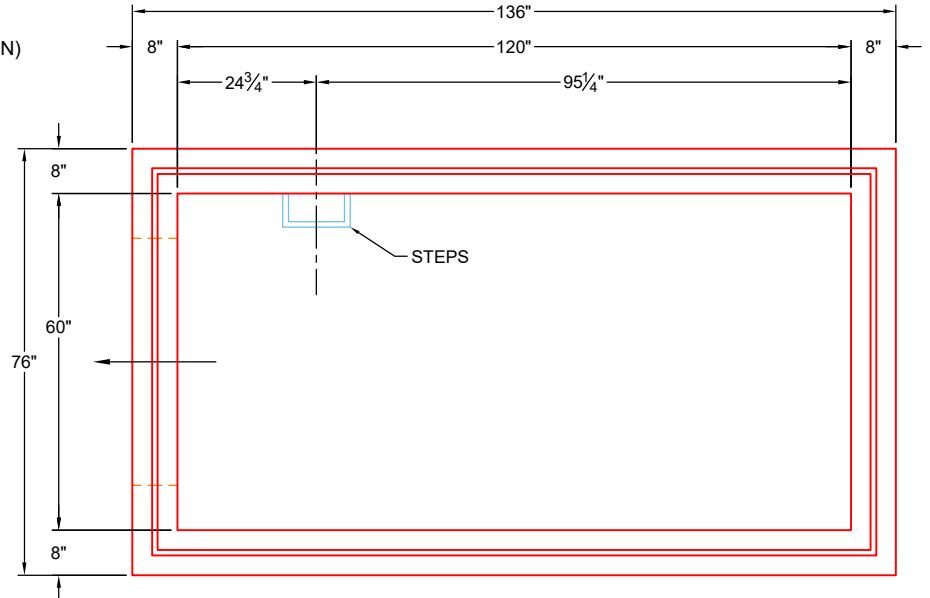
P5) 60" x 120" - HATCH (CAST FLUSH) - 3"	100 lb
P4) 60" x 120" - BX FLAT TOP 8"W w/60"x120" HATCH - 8"	2105 lb
P3) 60" x 120" - BOX RISER 8inW, Variable Ht - 38"	9891 lb
P2) 60" x 120" - BOX RISER 8inW, Variable Ht - 47"	11241 lb
P1) 60" x 120" - BX Separate Base Slab - 8"	6085 lb
1) HATCH (Alum.) - HALLIDAY H2R 48"x48"	235 lb
1) This Structure Includes a Cast-In Item (Hatch)	0 lb
4) 60" x 120" - Conseal CS-102 1.00"	0 lb
1) DOGHOUSE - 44"x44"	0 lb
2) Hole - 6.5	0 lb
1) Hole - 11	0 lb
8) MH Step ML-10-TDS-NCR - 10"	0 lb
Structure Total:	29658 lb

Structure Notes:
 1. PER ASTM C913 SPECIFICATIONS.
 2. CONCRETE = 4,000 PSI AT 28 DAYS.
 3. NO INVERT CHANNEL.
 REINFORCING PER ASTM A615 (GRADE 60).
 - TOP SLAB (As .62) #5 BARS AT 6" C.C.E.W.
 - WALLS (As .31) #5 BARS AT 12" C.C.E.W.
 - FLOOR (As .31) #5 BARS AT 12" C.C.E.W.

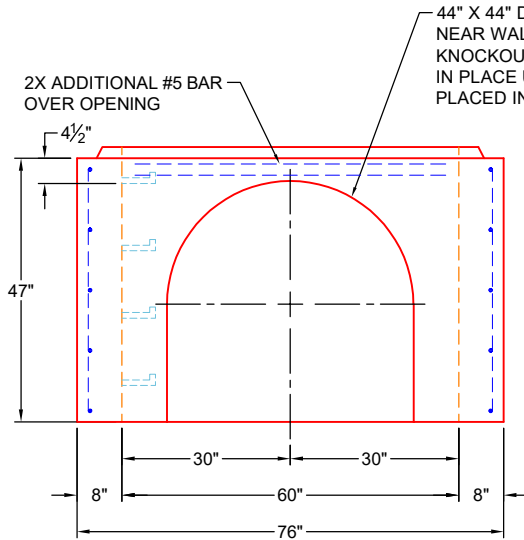
Rim: 561.48' Rim to Invert: 7.55' Slack: 0.48" Sump: 2.88" Step Position: 0°

GENERAL NOTES:

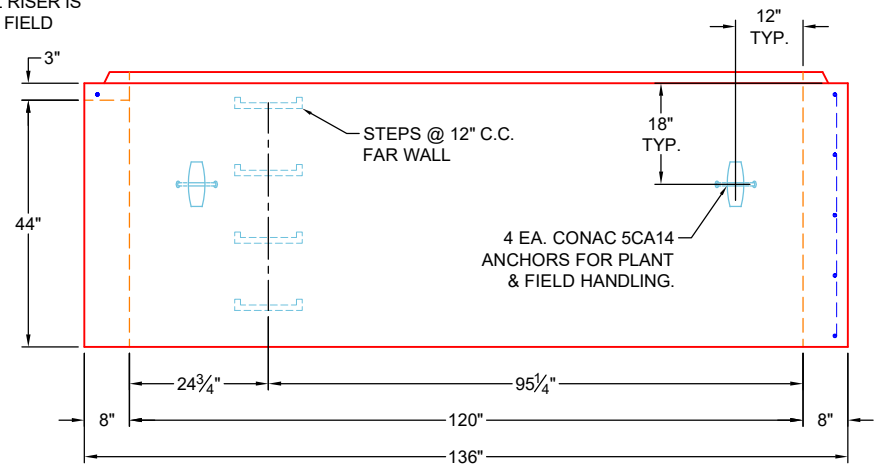
- MANUFACTURED TO ASTM C-913 (LATEST REVISION) & DESIGNED TO MEET ASTM C857 & ACI 318 REQUIREMENTS.
- CONCRETE: 5,000 PSI AT 28 DAYS
- REINFORCEMENT
- WALLS: #5 BAR @ 12" C.C. E.W. (GRADE 60)
- JOINT SEALANT: CONSEAL CS-102



PLAN VIEW



LEFT VIEW



FRONT VIEW

Coating (Int): Coating (Ext):	Seam Up: Tongue Seam Dn: Groove	Wall Thickness: 8" Floor Height: 0"	Height (Int): 47" Height (Ext): 47"	Weight (Net): 11241 lb Volume (Net): 2.87cu.yd
----------------------------------	------------------------------------	--	--	---