

Job Name: 25-3531 - Crescent Hill Filtration Plant Carbon Storage
 Job Location: Louisville, KY
 Contractor: Dugan & Meyers, LLC

Plant: Beaver Dam, KY
 3/30/2026 9:44:19 AM

Tech: K. Cardwell
 PC: J. Jarvis



Structure ID: V-008

P1 CVBS

BX Separate Base Slab

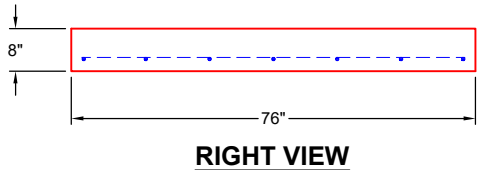
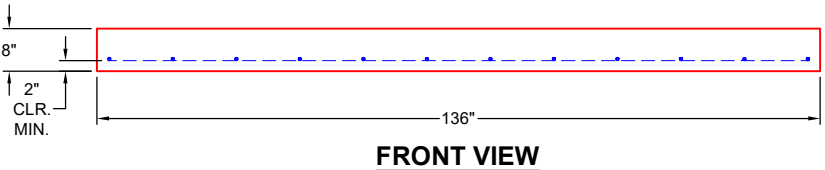
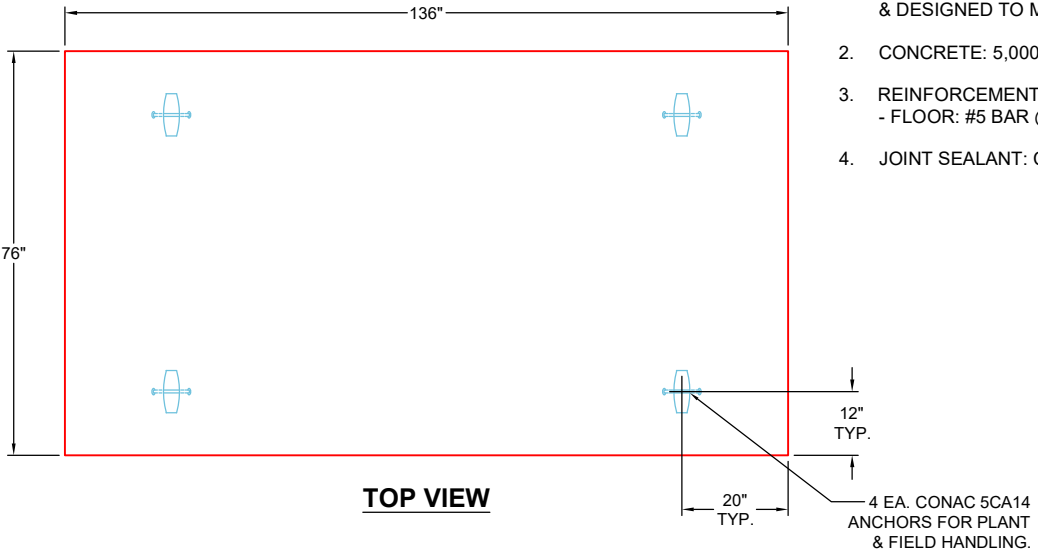
P5) 60" x 120" - HATCH (CAST FLUSH) - 3"	100 lb
P4) 60" x 120" - BX FLAT TOP 8"W w/60"x120" HATCH - 8"	2105 lb
P3) 60" x 120" - BOX RISER 8inW, Variable Ht - 38"	9891 lb
P2) 60" x 120" - BOX RISER 8inW, Variable Ht - 47"	11241 lb
P1) 60" x 120" - BX Separate Base Slab - 8"	6085 lb
1) HATCH (Alum.) - HALLIDAY H2R 48"x48"	235 lb
1) This Structure Includes a Cast-In Item (Hatch)	0 lb
4) 60" x 120" - Conseal CS-102 1.00"	0 lb
1) DOGHOUSE - 44"x44"	0 lb
2) Hole - 6.5	0 lb
1) Hole - 11	0 lb
8) MH Step ML-10-TDS-NCR - 10"	0 lb
Structure Total:	29658 lb

Structure Notes:
 1. PER ASTM C913 SPECIFICATIONS.
 2. CONCRETE = 4,000 PSI AT 28 DAYS.
 3. NO INVERT CHANNEL.
 REINFORCING PER ASTM A615 (GRADE 60).
 - TOP SLAB (As .62) #5 BARS AT 6" C.C.E.W.
 - WALLS (As .31) #5 BARS AT 12" C.C.E.W.
 - FLOOR (As .31) #5 BARS AT 12" C.C.E.W.

Rim: 561.48' Rim to Invert: 7.55' Slack: 0.48" Sump: 2.88" Step Position: 0°

GENERAL NOTES:

1. MANUFACTURED TO ASTM C-913 (LATEST REVISION) & DESIGNED TO MEET ASTM C857 & ACI 318 REQUIREMENTS.
2. CONCRETE: 5,000 PSI AT 28 DAYS
3. REINFORCEMENT
 - FLOOR: #5 BAR @ 12" C.C. E.W. (GRADE 60)
4. JOINT SEALANT: CONSEAL CS-102



Coating (Int): Coating (Ext):	Seam Up: Tongue Seam Dn: n/a	Wall Thickness: 8" Floor Height: 8"	Height (Int): 0" Height (Ext): 0"	Weight (Net): 6085 lb Volume (Net): 1.55cu.yd
----------------------------------	---------------------------------	--	--------------------------------------	--