

Job Name: 25-3531 - Crescent Hill Filtration Plant Carbon Storage  
 Job Location: Louisville, KY  
 Contractor: Dugan & Meyers, LLC

Plant: Beaver Dam, KY  
 3/30/2026 9:44:18 AM

Tech: K. Cardwell  
 PC: J. Jarvis



**Structure ID: V-007**

**P1 CVBS**

**BX Separate Base Slab**

- P5) 48" x 48" - HATCH (CAST FLUSH) - 3"
- P4) 60" x 60" - CB FLAT TOP 8"W w/48"x48" HATCH - 8"
- P3) 60" x 60" - BOX RISER 8inW, Variable Ht - 71"
- P2) 60" x 60" - BOX RISER 8inW, Variable Ht - 70"
- P1) 60" x 60" - BX Separate Base Slab - 8"
- 1) HATCH (Alum.) - HALLIDAY H2R 48"x48"
- 1) This Structure Includes a Cast-In Item (Hatch)
- 3) 60" x 60" - Conseal CS-102 1.00"
- 1) 48" x 48" - Conseal CS-102 1.00"
- 1) DOGHOUSE - 44"x44"
- 2) Hole - 6.5
- 13) MH Step ML-10-TDS-NCR - 10"

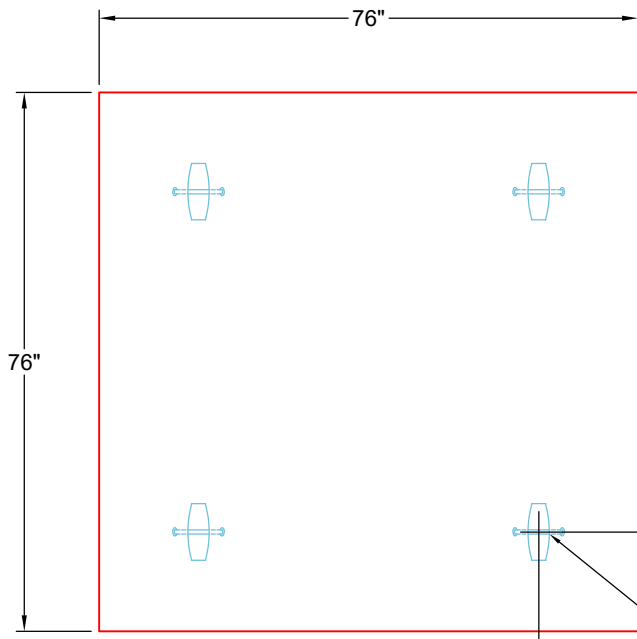
100 lb  
 2331 lb  
 12964 lb  
 11518 lb  
 3877 lb  
 235 lb  
 0 lb  
 0 lb  
 0 lb  
 0 lb  
 0 lb  
 0 lb  
 -----  
 Structure Total: 31025 lb

**Structure Notes:**  
 1. PER ASTM C913 SPECIFICATIONS.  
 2. CONCRETE = 4,000 PSI AT 28 DAYS.  
 3. NO INVERT CHANNEL.  
  
 REINFORCING PER ASTM A615 (GRADE 60).  
 - TOP SLAB (As .62) #5 BARS AT 6" C.C.E.W.  
 - WALLS (As .31) #5 BARS AT 12" C.C.E.W.  
 - FLOOR (As .31) #5 BARS AT 12" C.C.E.W.

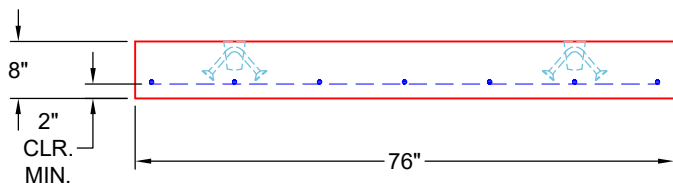
Rim: 560.12' Rim to Invert: 12.43' Slack: 6.16" Sump: 6" Step Position: 0°

**GENERAL NOTES:**

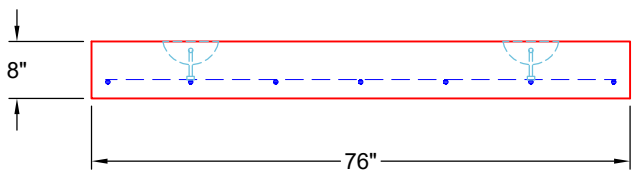
1. MANUFACTURED TO ASTM C-913 (LATEST REVISION) & DESIGNED TO MEET ASTM C857 & ACI 318 REQUIREMENTS.
2. CONCRETE: 5,000 PSI AT 28 DAYS
3. REINFORCEMENT  
 - FLOOR: #5 BAR @ 12" C.C. E.W. (GRADE 60)
4. JOINT SEALANT: CONSEAL CS-102



**TOP VIEW**



**FRONT VIEW**



**RIGHT VIEW**

4 EA. CONAC 5CA14 ANCHORS FOR PLANT & FIELD HANDLING.

Coating (Int): Coating (Ext):	Seam Up: Flat Seam Dn: n/a	Wall Thickness: 8" Floor Height: 8"	Height (Int): 0" Height (Ext): 0"	Weight (Net): 3877 lb Volume (Net): 0.99cu.yd
----------------------------------	-------------------------------	--	--------------------------------------	--