

Job Name: 25-3531 - Crescent Hill Filtration Plant Carbon Storage  
 Job Location: Louisville, KY  
 Contractor: Dugan & Meyers, LLC

Plant: Beaver Dam, KY  
 3/30/2026 9:44:17 AM

Tech: K. Cardwell  
 PC: J. Jarvis



**Structure ID: V-006**

**P1 BX60120-08W08F-VF**

**BOX BASE 8inW, 8inF**

- P4) 60" x 120" - HATCH (CAST FLUSH) - 3"
- P3) 60" x 120" - BX FLAT TOP 8"W w/60"x120" HATCH - 8"
- P2) 60" x 120" - BOX RISER 8inW, Variable Ht - 53"
- P1) 60" x 120" - BOX BASE 8inW, 8inF - 30"
- 1) HATCH (Alum.) - HALLIDAY H2R 48"x48"
- 1) This Structure Includes a Cast-In Item (Hatch)
- 1) SECONDARY POUR - WALLS
- 3) 60" x 120" - Conseal CS-102 1.00"
- 8) Hole - 6.5
- 7) MH Step ML-10-TDS-NCR - 10"

100 lb  
 2105 lb  
 13947 lb  
 14655 lb  
 235 lb  
 0 lb  
 0 lb  
 0 lb  
 0 lb  
 0 lb  
 -----  
 Structure Total: 31042 lb

**Structure Notes:**

1. PER ASTM C913 SPECIFICATIONS.
2. CONCRETE = 4,000 PSI AT 28 DAYS.
3. NO INVERT CHANNEL.

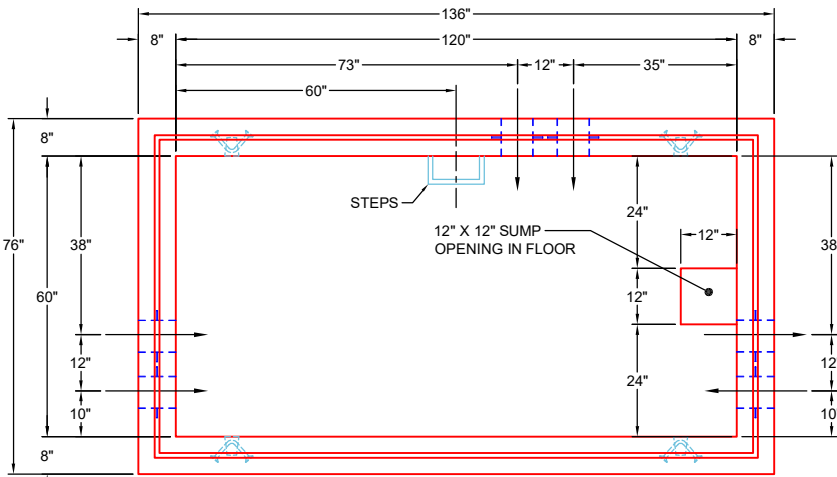
REINFORCING PER ASTM A615 (GRADE 60).  
 - TOP SLAB (As .62) #5 BARS AT 6" C.C.E.W.  
 - WALLS (As .31) #5 BARS AT 12" C.C.E.W.  
 - FLOOR (As .31) #5 BARS AT 12" C.C.E.W.

Rim: 556.51' Rim to Invert: 7.08' Slack: -0.04" Sump: 6" Step Position: 0°

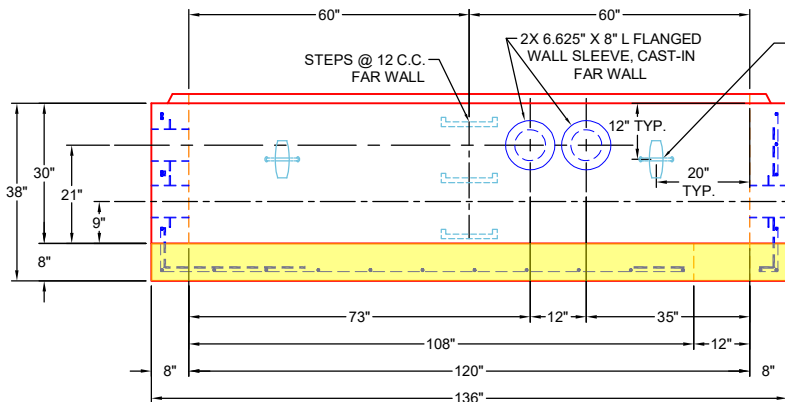
**FIRST POUR DRAWING**

**WEIGHTS:**

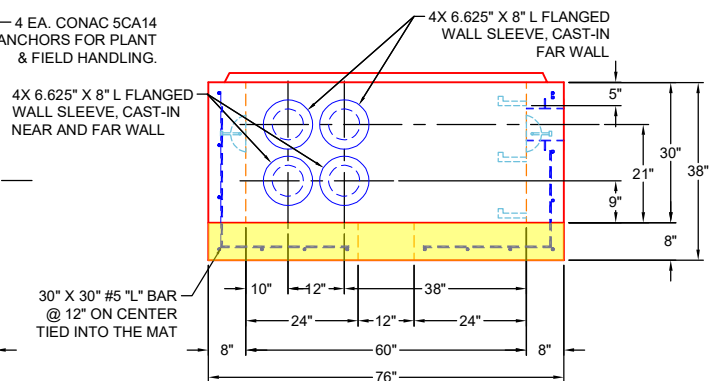
**FIRST POUR - 6,939 LBS.**  
**SECOND POUR - 7,716 LBS.**  
**TOTAL - 14,655 LBS.**



**TOP VIEW**



**FRONT VIEW**



**RIGHT VIEW**

**GENERAL NOTES:**

1. MANUFACTURED TO ASTM C-913 (LATEST REVISION) & DESIGNED TO MEET ASTM C857 & ACI 318 REQUIREMENTS.
2. CONCRETE: 5,000 PSI AT 28 DAYS
3. REINFORCEMENT  
 - FLOOR/WALLS: #5 BAR @ 12" C.C. E.W. (GRADE 60)
4. JOINT SEALANT: CONSEAL CS-102

Coating (Int):  
 Coating (Ext):

Seam Up: Tongue  
 Seam Dn: n/a

Wall Thickness: 8"  
 Floor Height: 8"

Height (Int): 30"  
 Height (Ext): 38"

Weight (Net): 14655 lb  
 Volume (Net): 3.74cu.yd

Job Name: 25-3531 - Crescent Hill Filtration Plant Carbon Storage  
 Job Location: Louisville, KY  
 Contractor: Dugan & Meyers, LLC

Plant: Beaver Dam, KY  
 3/30/2026 9:44:17 AM

Tech: K. Cardwell  
 PC: J. Jarvis



**Structure ID: V-006**

**P1 BX60120-08W08F-VF**

**BOX BASE 8inW, 8inF**

- P4) 60" x 120" - HATCH (CAST FLUSH) - 3"
- P3) 60" x 120" - BX FLAT TOP 8"W w/60"x120" HATCH - 8"
- P2) 60" x 120" - BOX RISER 8inW, Variable Ht - 53"
- P1) 60" x 120" - BOX BASE 8inW, 8inF - 30"
- 1) HATCH (Alum.) - HALLIDAY H2R 48"x48"
- 1) This Structure Includes a Cast-In Item (Hatch)
- 1) SECONDARY POUR - WALLS
- 3) 60" x 120" - Conseal CS-102 1.00"
- 8) Hole - 6.5
- 7) MH Step ML-10-TDS-NCR - 10"

100 lb  
 2105 lb  
 13947 lb  
 14655 lb  
 235 lb  
 0 lb  
 0 lb  
 0 lb  
 0 lb  
 0 lb  
 -----  
 Structure Total: 31042 lb

**Structure Notes:**

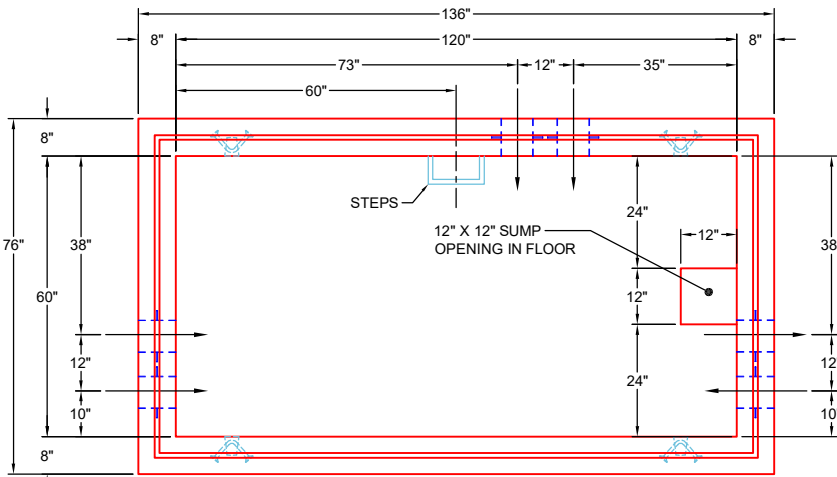
1. PER ASTM C913 SPECIFICATIONS.
2. CONCRETE = 4,000 PSI AT 28 DAYS.
3. NO INVERT CHANNEL.

REINFORCING PER ASTM A615 (GRADE 60).  
 - TOP SLAB (As .62) #5 BARS AT 6" C.C.E.W.  
 - WALLS (As .31) #5 BARS AT 12" C.C.E.W.  
 - FLOOR (As .31) #5 BARS AT 12" C.C.E.W.

Rim: 556.51' Rim to Invert: 7.08' Slack: -0.04" Sump: 6" Step Position: 0°

**SECOND POUR DRAWING**

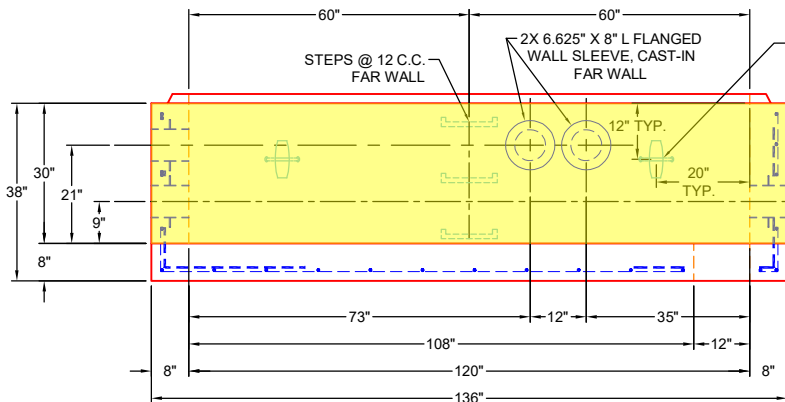
**WEIGHTS:**  
**FIRST POUR - 6,939 LBS.**  
**SECOND POUR - 7,716 LBS.**  
**TOTAL - 14,655 LBS.**



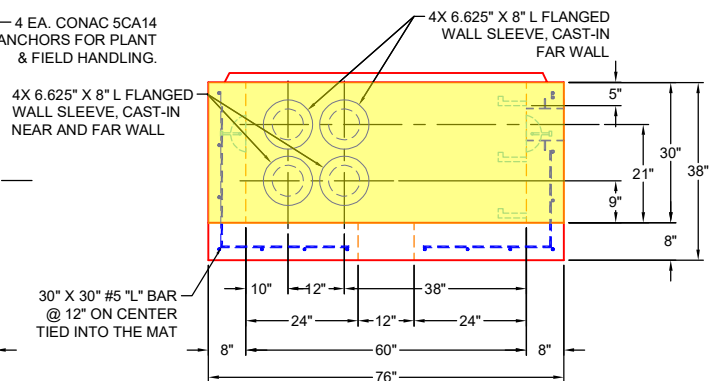
**TOP VIEW**

**GENERAL NOTES:**

1. MANUFACTURED TO ASTM C-913 (LATEST REVISION) & DESIGNED TO MEET ASTM C857 & ACI 318 REQUIREMENTS.
2. CONCRETE: 5,000 PSI AT 28 DAYS
3. REINFORCEMENT  
 - FLOOR/WALLS: #5 BAR @ 12" C.C. E.W. (GRADE 60)
4. JOINT SEALANT: CONSEAL CS-102



**FRONT VIEW**



**RIGHT VIEW**

Coating (Int):  
 Coating (Ext):

Seam Up: Tongue  
 Seam Dn: n/a

Wall Thickness: 8"  
 Floor Height: 8"

Height (Int): 30"  
 Height (Ext): 38"

Weight (Net): 14655 lb  
 Volume (Net): 3.74cu.yd