

Job Name: 25-3531 - Crescent Hill Filtration Plant Carbon Storage
 Job Location: Louisville, KY
 Contractor: Dugan & Meyers, LLC

Plant: Beaver Dam, KY
 3/30/2026 9:44:15 AM

Tech: K. Cardwell
 PC: J. Jarvis



Structure ID: V-005

P1 BX60120-08W08F-VF

BOX BASE 8inW, 8inF, Variable Ht

- P4) 60" x 120" - HATCH (CAST FLUSH) - 3"
- P3) 60" x 120" - BX FLAT TOP 8"W w/60"x120" HATCH - 8"
- P2) 60" x 120" - BOX RISER 8inW, Variable Ht - 27"
- P1) 60" x 120" - BOX BASE 8inW, 8inF, Variable Ht - 31"
- 1) HATCH (Alum.) - HALLIDAY H2R 48"x48"
- 1) This Structure Includes a Cast-In Item (Hatch)
- 1) SECONDARY POUR - WALLS
- 3) 60" x 120" - Conseal CS-102 1.00"
- 8) Hole - 6.5
- 5) MH Step ML-10-TDS-NCR - 10"

100 lb
 2105 lb
 7105 lb
 14918 lb
 235 lb
 0 lb
 0 lb
 0 lb
 0 lb
 0 lb
 0 lb
 Structure Total: 24463 lb

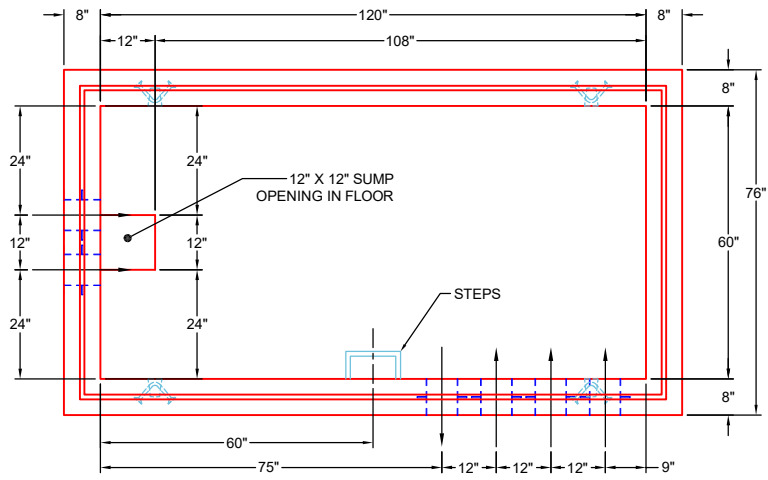
Structure Notes:
 1. PER ASTM C913 SPECIFICATIONS.
 2. CONCRETE = 4,000 PSI AT 28 DAYS.
 3. NO INVERT CHANNEL.
 REINFORCING PER ASTM A615 (GRADE 60).
 - TOP SLAB (As .62) #5 BARS AT 6" C.C.E.W.
 - WALLS (As .31) #5 BARS AT 12" C.C.E.W.
 - FLOOR (As .31) #5 BARS AT 12" C.C.E.W.

Rim: 556.92' Rim to Invert: 6.5' Slack: 18" Sump: 6" Step Position: 0°

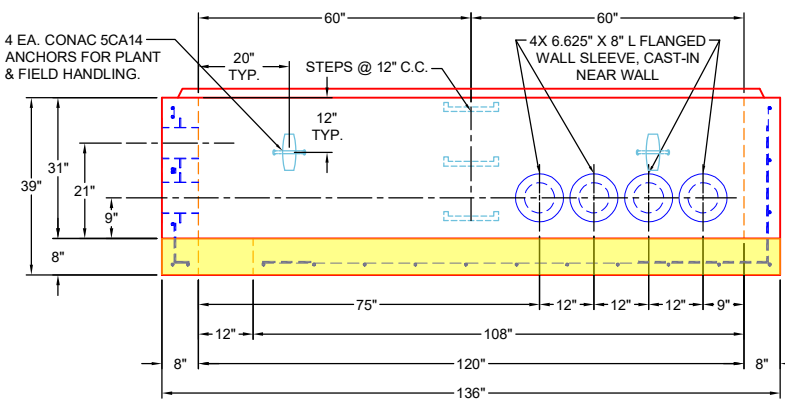
FIRST POUR DRAWING

WEIGHTS:
FIRST POUR - 6,939 LBS.
SECOND POUR - 7,979 LBS.
TOTAL - 14,918 LBS.

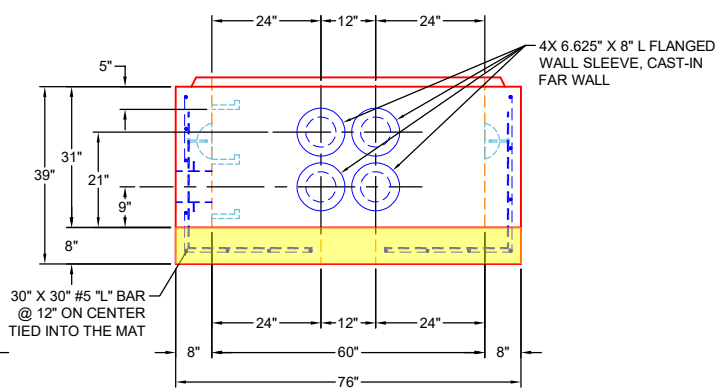
- GENERAL NOTES:**
1. MANUFACTURED TO ASTM C-913 (LATEST REVISION) & DESIGNED TO MEET ASTM C857 & ACI 318 REQUIREMENTS.
 2. CONCRETE: 5,000 PSI AT 28 DAYS
 3. REINFORCEMENT
 - FLOOR/WALLS: #5 BAR @ 12" C.C. E.W. (GRADE 60)
 4. JOINT SEALANT: CONSEAL CS-102



PLAN VIEW



FRONT VIEW



RIGHT VIEW

Coating (Int): Coating (Ext):	Seam Up: Tongue Seam Dn: n/a	Wall Thickness: 8" Floor Height: 8"	Height (Int): 31" Height (Ext): 39"	Weight (Net): 14918 lb Volume (Net): 3.81cu.yd
----------------------------------	---------------------------------	----------------------------------------	----------------------------------------	---------------------------------------------------

Job Name: 25-3531 - Crescent Hill Filtration Plant Carbon Storage
 Job Location: Louisville, KY
 Contractor: Dugan & Meyers, LLC

Plant: Beaver Dam, KY
 3/30/2026 9:44:15 AM

Tech: K. Cardwell
 PC: J. Jarvis



Structure ID: V-005

P1 BX60120-08W08F-VF

BOX BASE 8inW, 8inF, Variable Ht

- P4) 60" x 120" - HATCH (CAST FLUSH) - 3"
- P3) 60" x 120" - BX FLAT TOP 8"W w/60"x120" HATCH - 8"
- P2) 60" x 120" - BOX RISER 8inW, Variable Ht - 27"
- P1) 60" x 120" - BOX BASE 8inW, 8inF, Variable Ht - 31"
- 1) HATCH (Alum.) - HALLIDAY H2R 48"x48"
- 1) This Structure Includes a Cast-In Item (Hatch)
- 1) SECONDARY POUR - WALLS
- 3) 60" x 120" - Conseal CS-102 1.00"
- 8) Hole - 6.5
- 5) MH Step ML-10-TDS-NCR - 10"

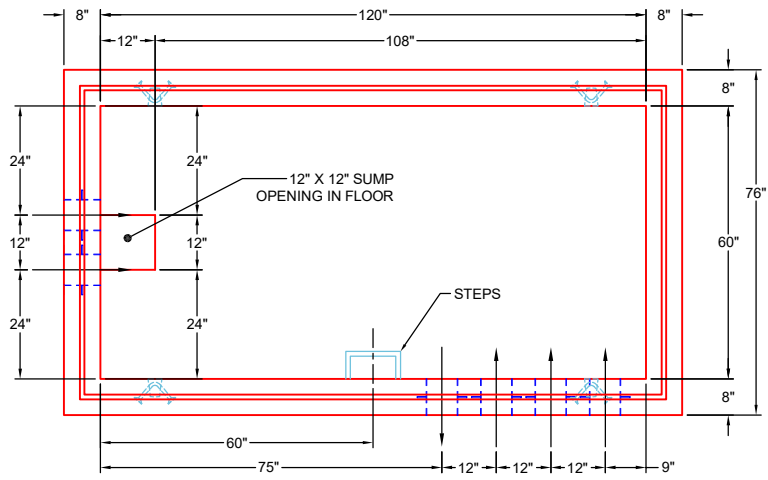
100 lb
 2105 lb
 7105 lb
 14918 lb
 235 lb
 0 lb
 0 lb
 0 lb
 0 lb
 0 lb
 0 lb
 Structure Total: 24463 lb

Structure Notes:
 1. PER ASTM C913 SPECIFICATIONS.
 2. CONCRETE = 4,000 PSI AT 28 DAYS.
 3. NO INVERT CHANNEL.
 REINFORCING PER ASTM A615 (GRADE 60).
 - TOP SLAB (As .62) #5 BARS AT 6" C.C.E.W.
 - WALLS (As .31) #5 BARS AT 12" C.C.E.W.
 - FLOOR (As .31) #5 BARS AT 12" C.C.E.W.

Rim: 556.92' Rim to Invert: 6.5' Slack: 18" Sump: 6" Step Position: 0°

SECOND POUR DRAWING

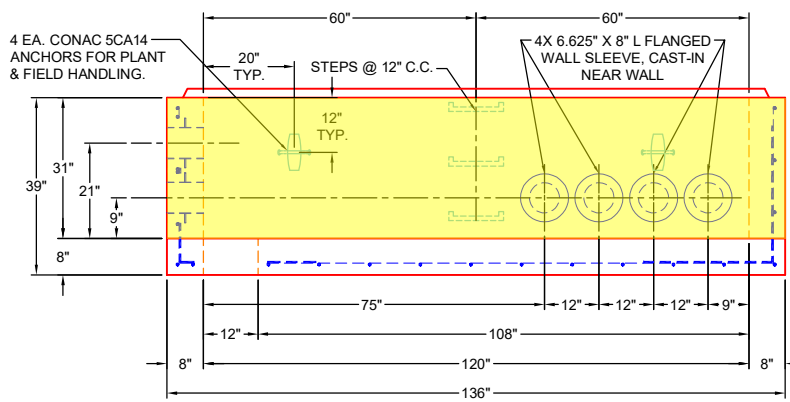
WEIGHTS:
FIRST POUR - 6,939 LBS.
SECOND POUR - 7,979 LBS.
TOTAL - 14,918 LBS.



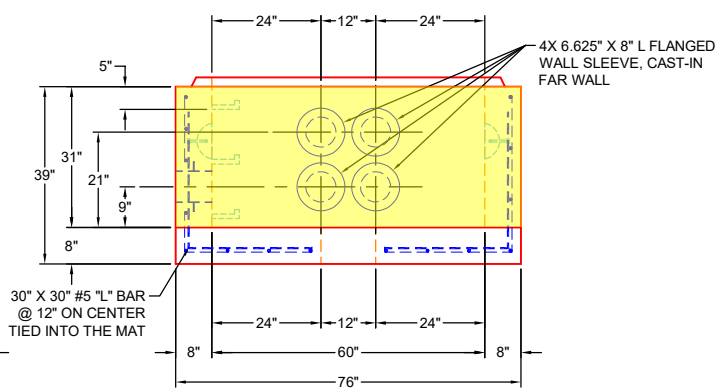
PLAN VIEW

GENERAL NOTES:

1. MANUFACTURED TO ASTM C-913 (LATEST REVISION) & DESIGNED TO MEET ASTM C857 & ACI 318 REQUIREMENTS.
2. CONCRETE: 5,000 PSI AT 28 DAYS
3. REINFORCEMENT
 - FLOOR/WALLS: #5 BAR @ 12" C.C. E.W. (GRADE 60)
4. JOINT SEALANT: CONSEAL CS-102



FRONT VIEW



RIGHT VIEW

Coating (Int): Coating (Ext):	Seam Up: Tongue Seam Dn: n/a	Wall Thickness: 8" Floor Height: 8"	Height (Int): 31" Height (Ext): 39"	Weight (Net): 14918 lb Volume (Net): 3.81cu.yd
----------------------------------	---------------------------------	----------------------------------------	----------------------------------------	---------------------------------------------------