

Job Name: 25-3531 - Crescent Hill Filtration Plant Carbon Storage
 Job Location: Louisville, KY
 Contractor: Dugan & Meyers, LLC

Plant: Beaver Dam, KY
 3/30/2026 9:44:19 AM

Tech: K. Cardwell
 PC: J. Jarvis



Structure ID: 4" WATER VAULT

P1 CVBVF

BOX BASE 8inW, 8inF, Variable Ht

- P4) 30" x 36" - HATCH (CAST FLUSH) - 3"
- P3) 48" x 128" - CB FLAT TOP 8"W w/30"x36" HATCH - 8"
- P2) 48" x 128" - BOX RISER 8inW, Variable Ht - 20"
- P1) 48" x 128" - BOX BASE 8inW, 8inF, Variable Ht - 32"
- 1) HATCH (Alum.) - HALLIDAY H2R 48"x48"
- 1) This Structure Includes a Cast-In Item (Hatch)
- 1) SECONDARY POUR - WALLS
- 2) Hole - 8

- 100 lb
- 5462 lb
- 5156 lb
- 14368 lb
- 235 lb
- 0 lb
- 0 lb
- 0 lb
-
- Structure Total: 25320 lb

Structure Notes:

1. PER ASTM C913 SPECIFICATIONS.
2. CONCRETE = 4,000 PSI AT 28 DAYS.
3. NO INVERT CHANNEL.

REINFORCING PER ASTM A615 (GRADE 60).

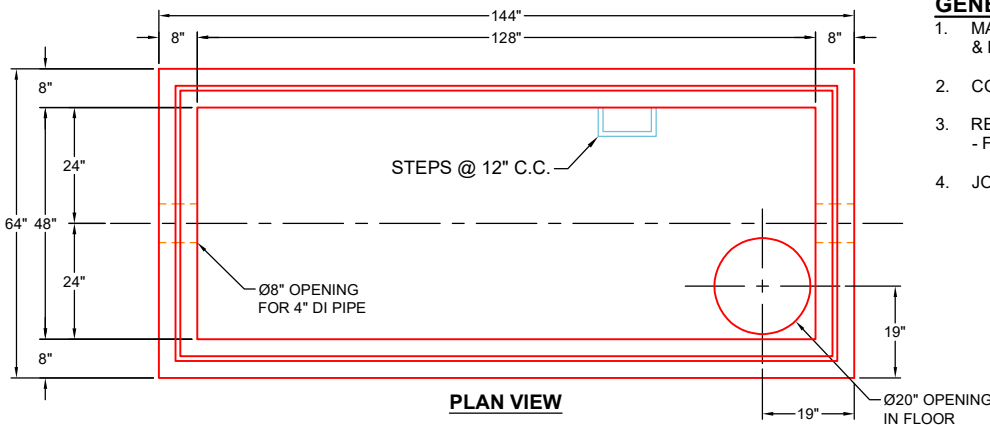
- TOP SLAB (As .62) #5 BARS AT 6" C.C.E.W.
- WALLS (As .31) #5 BARS AT 12" C.C.E.W.
- FLOOR (As .31) #5 BARS AT 12" C.C.E.W.

Rim: 560' Rim to Invert: 4' Slack: 0" Sump: 12" Step Position:

FIRST POUR DRAWING

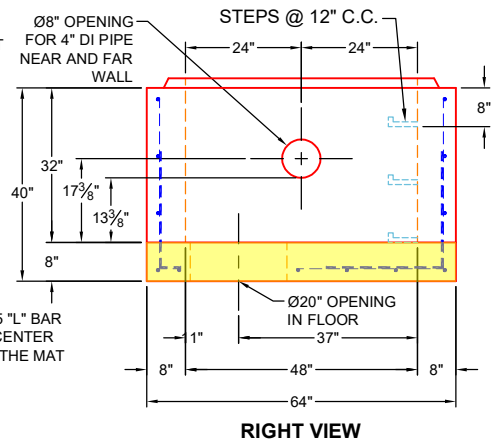
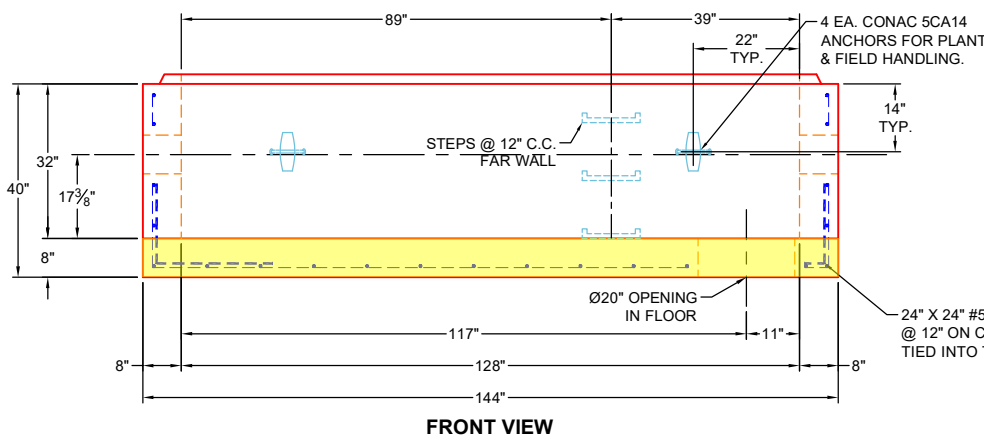
WEIGHTS:

FIRST POUR - 6,187 LBS.
SECOND POUR - 8,181 LBS.
TOTAL - 14,368 LBS.



GENERAL NOTES:

1. MANUFACTURED TO ASTM C-913 (LATEST REVISION) & DESIGNED TO MEET ASTM C857 & ACI 318 REQUIREMENTS.
2. CONCRETE: 5,000 PSI AT 28 DAYS
3. REINFORCEMENT
 - FLOOR: #5 BAR @ 12" C.C. E.W. (GRADE 60)
4. JOINT SEALANT: CONSEAL CS-102



Coating (Int):
 Coating (Ext):

Seam Up: Tongue
 Seam Dn: n/a

Wall Thickness: 8"
 Floor Height: 8"

Height (Int): 32"
 Height (Ext): 40"

Weight (Net): 14368 lb
 Volume (Net): 3.67cu.yd

Job Name: 25-3531 - Crescent Hill Filtration Plant Carbon Storage
 Job Location: Louisville, KY
 Contractor: Dugan & Meyers, LLC

Plant: Beaver Dam, KY
 3/30/2026 9:44:19 AM

Tech: K. Cardwell
 PC: J. Jarvis



Structure ID: 4" WATER VAULT

P1 CVBVF

BOX BASE 8inW, 8inF, Variable Ht

- P4) 30" x 36" - HATCH (CAST FLUSH) - 3"
- P3) 48" x 128" - CB FLAT TOP 8"W w/30"x36" HATCH - 8"
- P2) 48" x 128" - BOX RISER 8inW, Variable Ht - 20"
- P1) 48" x 128" - BOX BASE 8inW, 8inF, Variable Ht - 32"
- 1) HATCH (Alum.) - HALLIDAY H2R 48"x48"
- 1) This Structure Includes a Cast-In Item (Hatch)
- 1) SECONDARY POUR - WALLS
- 2) Hole - 8

100 lb
 5462 lb
 5156 lb
 14368 lb
 235 lb
 0 lb
 0 lb
 0 lb

 Structure Total: 25320 lb

Structure Notes:

1. PER ASTM C913 SPECIFICATIONS.
2. CONCRETE = 4,000 PSI AT 28 DAYS.
3. NO INVERT CHANNEL.

REINFORCING PER ASTM A615 (GRADE 60).

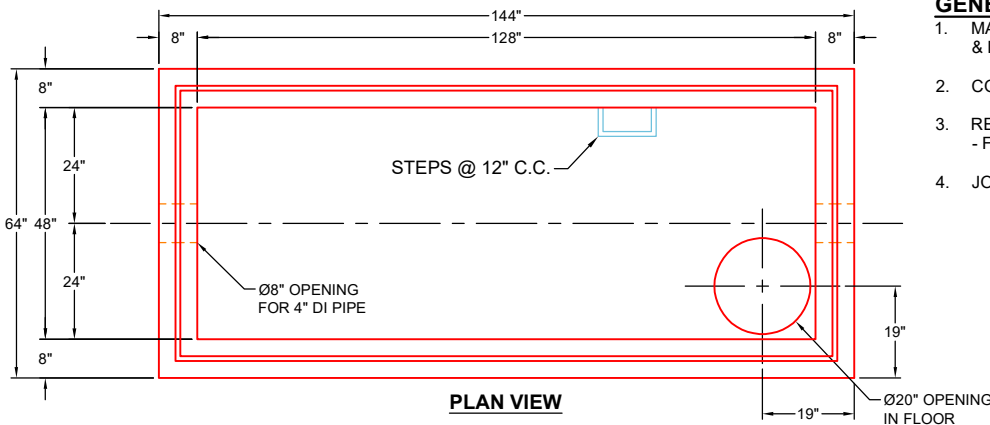
- TOP SLAB (As .62) #5 BARS AT 6" C.C.E.W.
- WALLS (As .31) #5 BARS AT 12" C.C.E.W.
- FLOOR (As .31) #5 BARS AT 12" C.C.E.W.

Rim: 560' Rim to Invert: 4' Slack: 0" Sump: 12" Step Position:

SECOND POUR DRAWING

WEIGHTS:

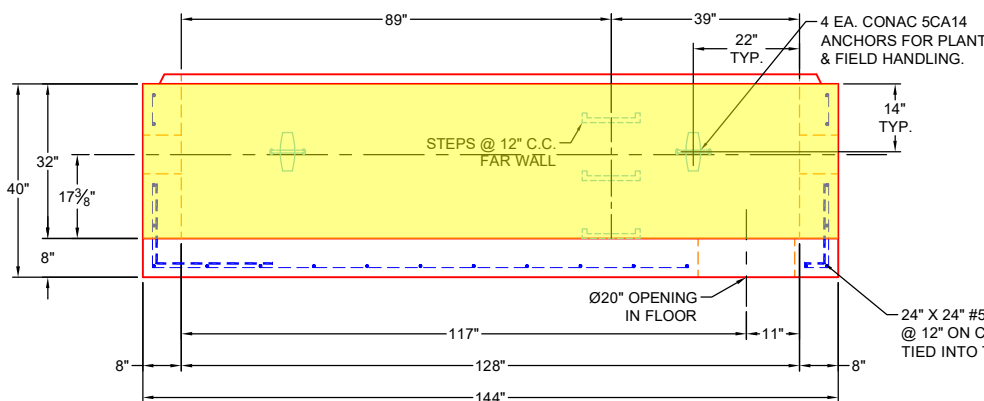
FIRST POUR - 6,187 LBS.
 SECOND POUR - 8,181 LBS.
 TOTAL - 14,368 LBS.



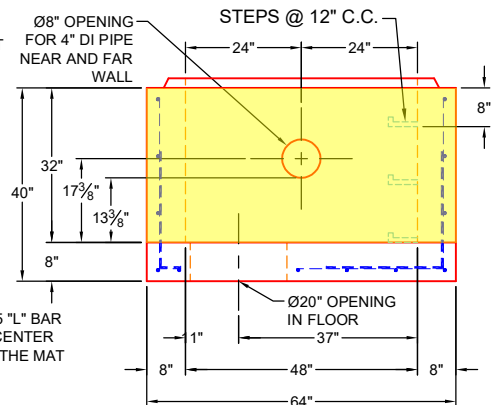
PLAN VIEW

GENERAL NOTES:

1. MANUFACTURED TO ASTM C-913 (LATEST REVISION) & DESIGNED TO MEET ASTM C857 & ACI 318 REQUIREMENTS.
2. CONCRETE: 5,000 PSI AT 28 DAYS
3. REINFORCEMENT
 - FLOOR: #5 BAR @ 12" C.C. E.W. (GRADE 60)
4. JOINT SEALANT: CONSEAL CS-102



FRONT VIEW



RIGHT VIEW

Coating (Int):
 Coating (Ext):

Seam Up: Tongue
 Seam Dn: n/a

Wall Thickness: 8"
 Floor Height: 8"

Height (Int): 32"
 Height (Ext): 40"

Weight (Net): 14368 lb
 Volume (Net): 3.67cu.yd