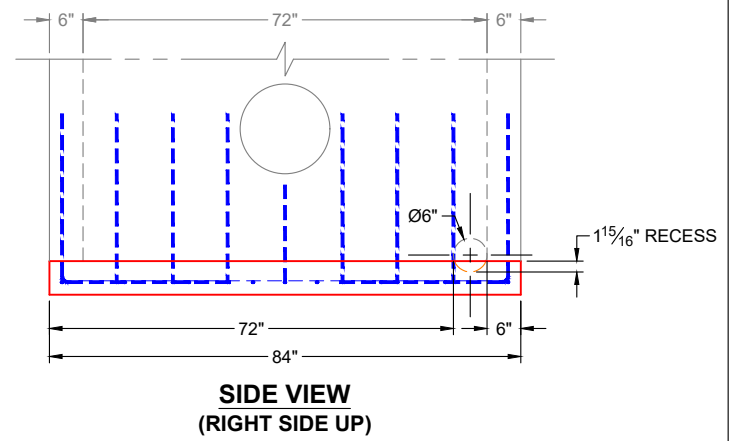
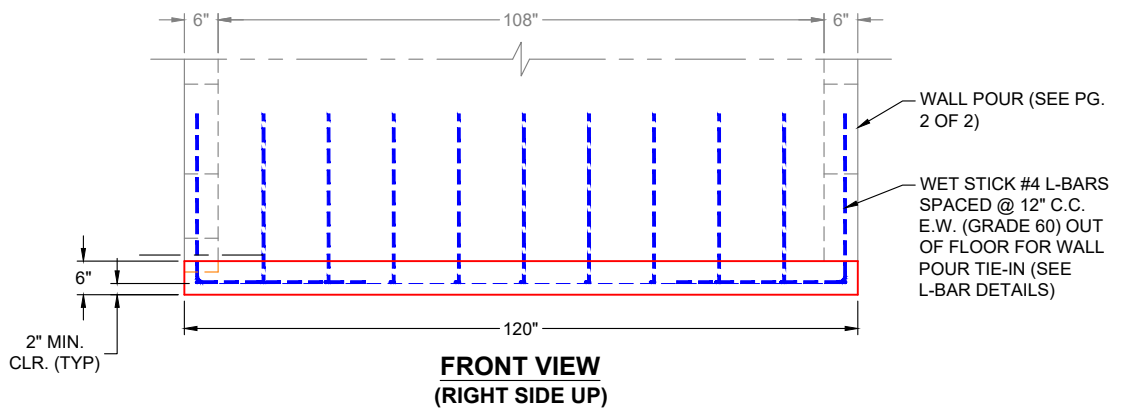
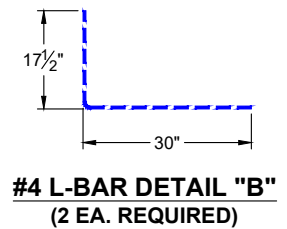
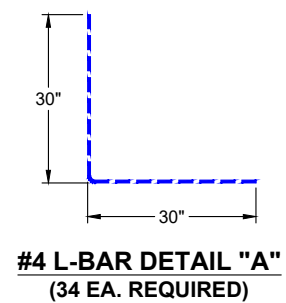



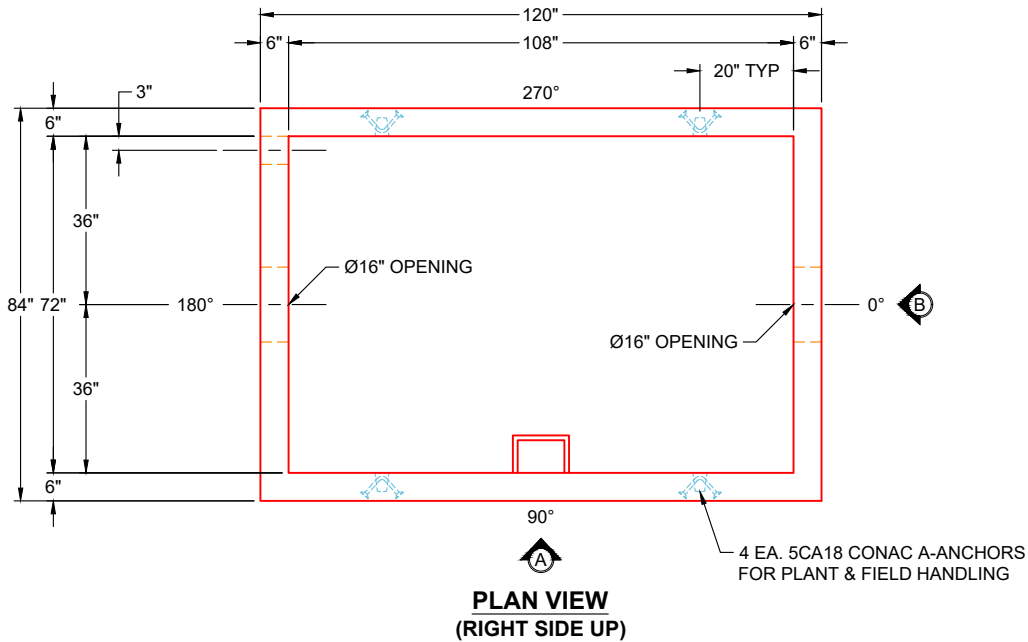
GENERAL NOTES:

1. MANUFACTURED TO ASTM C-913 (LATEST REVISION)
2. CONCRETE: 5,000 PSI AT 28 DAYS
3. REINFORCEMENT: #4 BAR @ 12" C.C. E.W. (GRADE 60) - 2" MIN. REBAR CLEARANCE (TYP)
4. WEIGHT: 5,075 LBS
5. SEE PAGE 2 OF 2 FOR WALL POUR (SECOND POUR)



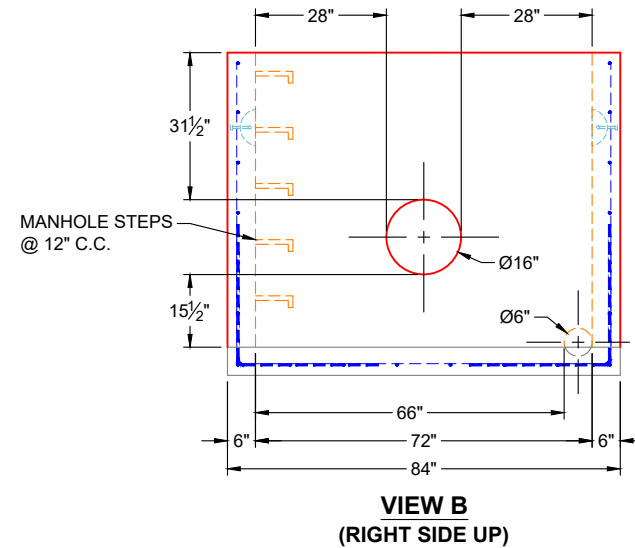
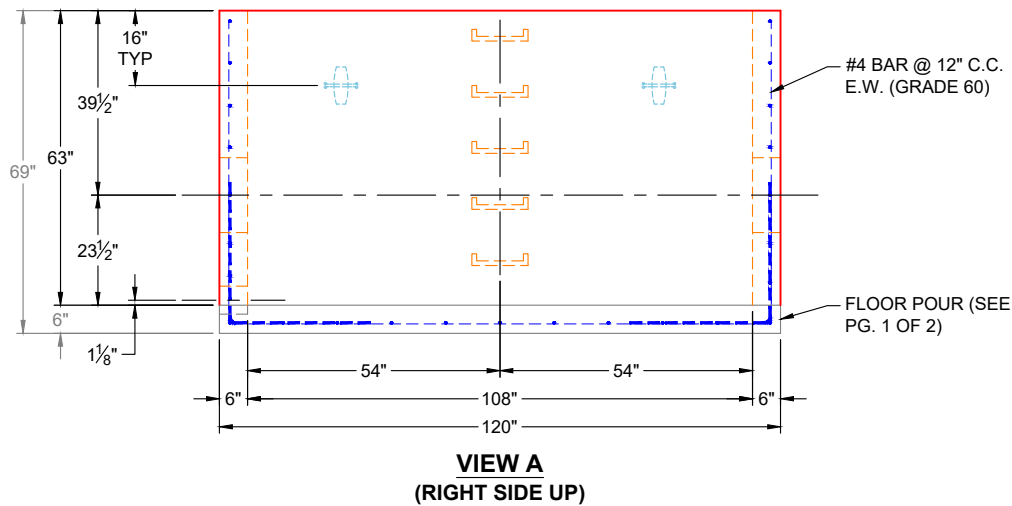
PRODUCTION WORK ORDER		PRODUCT I.D.: BX72108-06W06F-VF	DESCRIPTION: 84" X 120" X 6" BASE FLOOR (FIRST POUR)	
	QUALITY CONTROL CHECKLIST	PRODUCT VIEW: RIGHT SIDE UP	CUSTOMER: HAYES PIPE SUPPLY	
	<input type="checkbox"/> ALL DIMENSIONS CORRECT.	PLANT: BEAVER DAM, KY	PROJECT: RUDDERVILLE PS MODIFICATIONS	
	<input type="checkbox"/> LIFTERS INSTALLED.	WEIGHT: 5,075 LBS	STRUCTURE: 2-53525 (CONTROL VALVE VAULT)	
	<input type="checkbox"/> CORRECT THICKNESS.	TOP SECTION JOINT: N / A	ORDER NO: 25-3525	
	<input type="checkbox"/> REINFORCING CORRECT.	BASE SECTION JOINT: N / A	PE: J.H. ROSS	DRAWING: K. CARDWELL
<input type="checkbox"/> FINISH ON SLAB SURFACE UNIFORM.	QC CHECK INITIALS:	DATE: 10/06/25	SCALE: NTS	PG. 1 OF 2
<input type="checkbox"/> BASE MAT CORRECT.				
<input type="checkbox"/> PRODUCT SQUARE.				

THIS DRAWING IS THE PROPERTY OF INFRASTRUCTURE PRECAST, INC. ANY USE OR DUPLICATION OF THIS DRAWING WITHOUT PRIOR AUTHORIZATION IS STRICTLY PROHIBITED.



GENERAL NOTES:

1. MANUFACTURED TO ASTM C-913 (LATEST REVISION)
2. CONCRETE: 5,000 PSI AT 28 DAYS
3. REINFORCEMENT: #4 BAR @ 12" C.C. E.W. (GRADE 60) - 2" MIN. REBAR CLEARANCE (TYP)
4. WEIGHT: 11,965 LBS (17,040 LBS FLOOR & WALLS TOTAL)
5. SEE PAGE 1 OF 2 FOR FLOOR POUR (FIRST POUR)



PRODUCTION WORK ORDER

PRODUCT I.D.: BX72108-06W06F-VF

DESCRIPTION: 72" X 108" X 63" BASE WALLS (SECOND POUR)



QUALITY CONTROL CHECKLIST

- ALL DIMENSIONS CORRECT.
- LIFTERS INSTALLED.
- HOLE LOCATION(S) CORRECT.
- REINFORCING CORRECT.
- SURFACE QUALITY ACCEPTABLE.
- EDGES CHAMFERED.
- ALL PATCHWORK ACCEPTABLE.

PRODUCT VIEW: RIGHT SIDE UP

CUSTOMER: HAYES PIPE SUPPLY

PLANT: BEAVER DAM, KY

PROJECT: RUDDERVILLE PS MODIFICATIONS

WEIGHT: 11,965 LBS (17,040 LBS FLOOR & WALLS TOTAL)

STRUCTURE: 2-53525 (CONTROL VALVE VAULT)

TOP SECTION JOINT: FLAT

ORDER NO: 25-3525

BASE SECTION JOINT: N / A

PE: J.H. ROSS

DRAWING: K. CARDWELL

QC CHECK INITIALS:

DATE: 10/06/25

SCALE: NTS

PG. 2 OF 2