



Structure ID: 2-53505

P1 HWSFBIO18

18" - SLOPED & FLARED BOX I/O

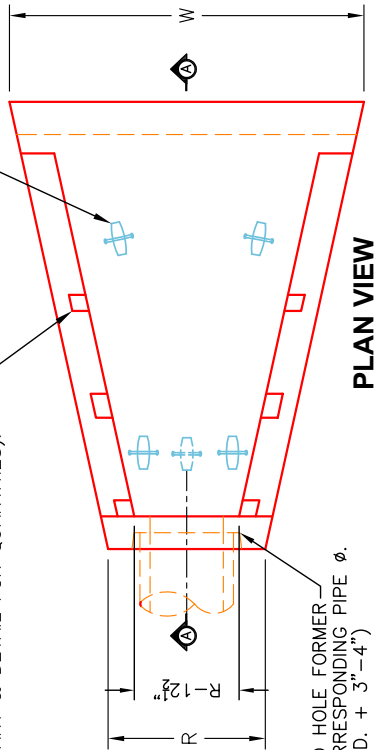
NOTES:

1. CONCRETE: KYTC APPROVED.
2. REINFORCING: #5 BAR @ 12", C/C E.W.-GRADE 60, (WITH 2" CONCRETE COVER MINIMUM)
3. REINFORCING BARS TO BE TACK WELDED OR TIED.
4. PIPE AND LIFTING ANCHOR POCKETS TO BE GROUTED WITH KYTC APPROVED NON-SHRINK GROUT.
5. DRAWING TO BE USED IN CONJUNCTION WITH KYTC STD. DRAWINGS RDB-105-06 & RDB-106-05 AND THE STANDARD SPECIFICATIONS FOR ROAD AND BRIDGE CONSTRUCTION.
6. 3/4" CHAMFER ON ALL EXPOSED EDGES.
7. PREFORMED STEPPED HOLE SIZED AS PER O.D. OF PIPE + 3"-4".

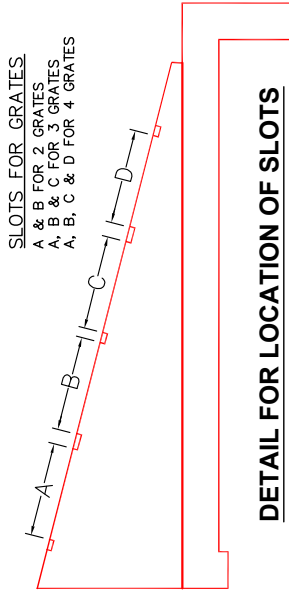
"A"-ANCHOR LIFTING SYSTEM FOR PLANT & FIELD HANDLING. (SEE CHART FOR TYPE & QTY.)

SLOTS AS REQUIRED FOR STRUCTURAL STEEL GRATES (NOT SHOWN) AS SUPPLIED BY BOTTOMS ENGINEERING OR J.R. HOE & SONS (SEE CHART & DETAIL FOR QUANTITIES).

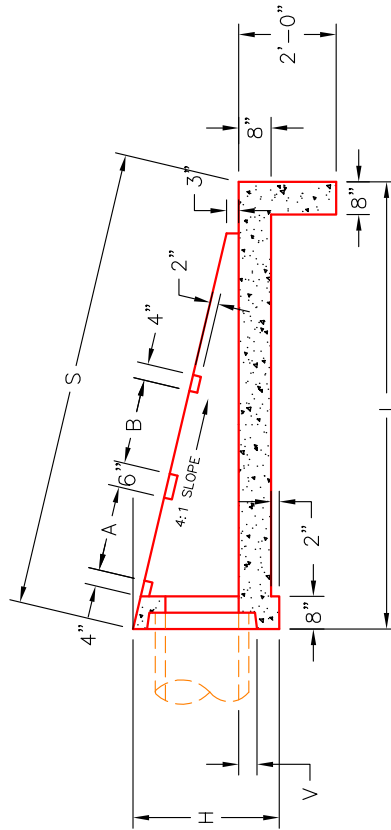
STEPPED HOLE FORMER FOR CORRESPONDING PIPE Ø. (PIPE O.D. + 3"-4")



PLAN VIEW

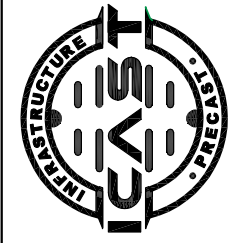


DETAIL FOR LOCATION OF SLOTS



SECTION A-A

FRONT ELEVATION



INFRASTRUCTURE PRECAST, INC.
 981 WEST 7TH ST., BEAVER DAM, KY. 42320
 PHONE: (270) 363-2238, FAX: (270) 298-7424

KYTC 15"-36" SLOPED & FLARED BOX OUTLET-OUTLET HEADWALL (NO SKEW)

DRAWING NO.: KYTC 12"-36" SF-I/O DATE: 12-08-21
 REVIEWED BY: J.H. ROSS, PE DRAWN BY: N. RICHARDS
 WEB: WWW.ICASTING.COM SCALE: NTS

DIMENSIONS														
PIPE Ø	H	L	S	R	V	W	A	B	C	D	NO. GRATES	CONCRETE YD ³	LBS. #4 BAR	LIFTING ANCHORS
15"	36"	102"	105 1/2"	35 1/2"	4"	8 7/8"	21"	21"	---	---	2 EA.	1.8	81	3 EA. CONAC 6CA18
18"	36"	102"	105 1/2"	35 1/2"	4"	8 7/8"	21"	21"	---	---	2 EA.	1.8	81	3 EA. CONAC 6CA18
24"	43"	128"	132"	42 1/2"	5"	10 7/8"	33"	33"	---	---	2 EA.	2.7	111	4 EA. CONAC 6CA18
30"	50"	154"	158 1/2"	49 1/2"	6"	12 7/8"	33"	33"	21"	21"	1 EA.	3.8	146	4 EA. CONAC 6CA18
36"	57"	180"	185 1/2"	56 1/2"	6"	14 7/8"	33"	33"	21"	21"	2 EA.	5.1	187	4 EA. CONAC 6CA18

THIS DRAWING IS THE PROPERTY OF INFRASTRUCTURE PRECAST, INC. ANY USE OR DUPLICATION OF THIS DRAWING WITHOUT PRIOR AUTHORIZATION IS STRICTLY PROHIBITED.