

Job Name: 25-3505 KYTC Multi Co Call 200 (251117)
 Job Location:
 Contractor: Jim Smith Contracting Co, LLC

Plant: 100
 3/25/2026 8:42:46 AM

Tech: J. Coppage - A
 PC: Jay Ross Jarvis



Structure ID: 1644 00

P2 BXLD2424FL-24

BX FLAT LID 8inW w/CC 24" HOLE

- P3) 24" - CASTING HEIGHT - 8"
- P2) 24" x 24" - BX FLAT LID 8inW w/CC 24" HOLE - 8"
- P1) 24" x 24" - BOX BASE 8inW, 8inF, Variable Ht - 35"
- 1) CASTING - HOE KY-510 F/C (KY TY.2)
- 1) 24" x 24" - Conseal CS-102 1.00"
- 2) Hole - 24"

Structure Total:

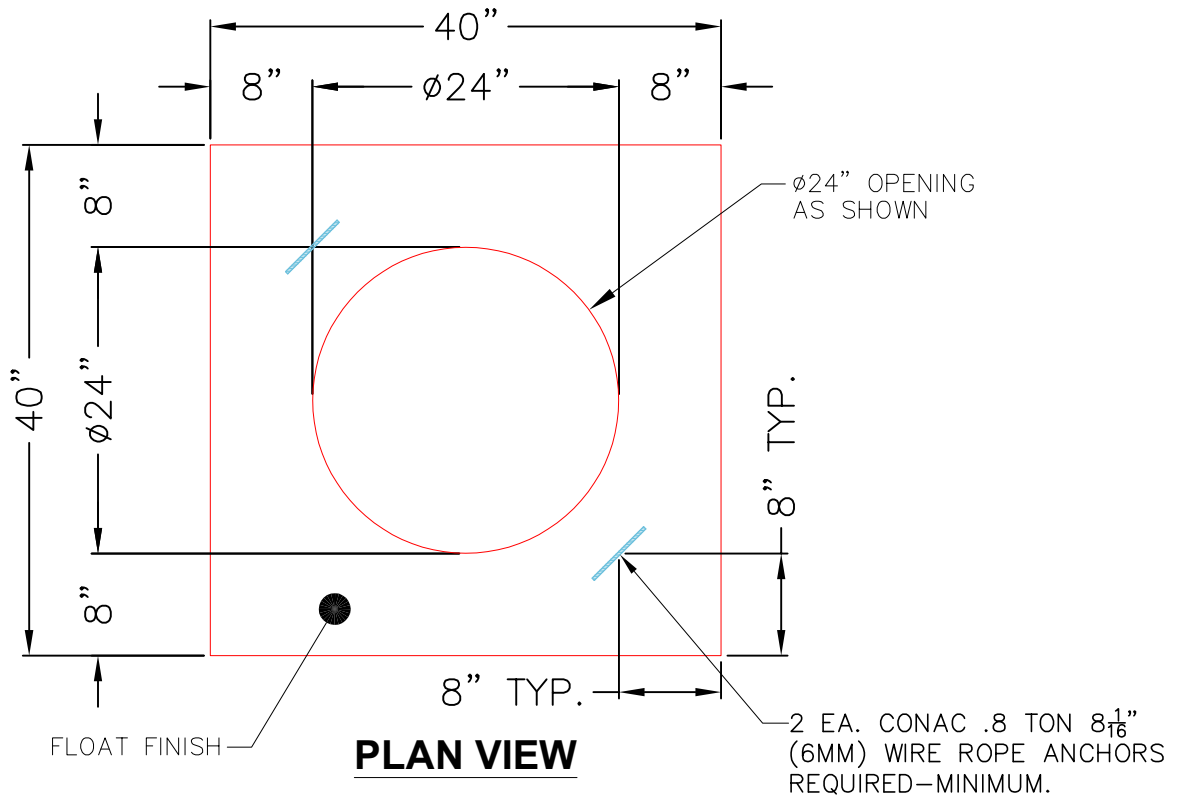
0 lb
 770 lb
 3626 lb
 510 lb
 0 lb
 0 lb

 4906 lb

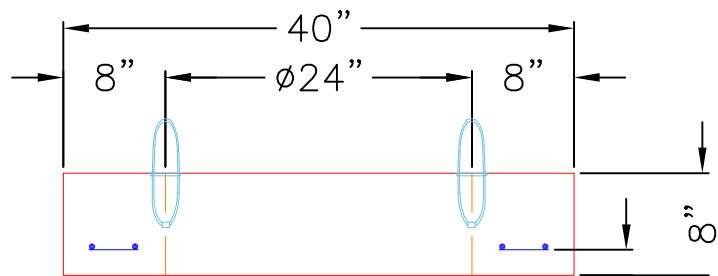
Structure Notes:

- ***KYTC STATE PROJECT**
- 1. HOE KY-510 F/C (KY TY.2) PROVIDED BY ICAST.
- 2. KYTC JUNCTION BOX B1 / PER ASTM C913 SPEC'S.
- 3. CONCRETE = 4,000 PSI AT 28 DAYS.
- 4. TOP SLAB w 24" HOLE FOR KYTC TYPE 2 F/C.
- 5. REINFORCING PER ASTM A615 (GRADE 60).
 - TOP SLAB (As. 62) #5 BARS AT 6" C.C.E.W.
 - WALLS (As .31) #5 BARS AT 12" C.C.E.W.
 - FLOOR (As .31) #5 BARS AT 12" C.C.E.W.

KYTC STATE PROJECT



PLAN VIEW



TOP VIEW

- NOTES:**
- 1. MANUFACTURED TO ASTM C-913 (LATEST REVISION).
 - 2. CONCRETE: 4,000 PSI AT 28 DAYS.
 - 3. REINFORCING: #5 BAR @ 6" O.C. E.W. (GRADE 60).

2" CLR. MIN.

Coating (Int): Coating (Ext):	Seam Up: Flat Seam Dn: Flat	Wall Thickness: 8"	Height (Ext): 8"	Weight (Net): 770 lb Volume (Net): 0.2cu.yd
----------------------------------	--------------------------------	--------------------	------------------	--