

Job Name: 25-3505 KYTC Multi Co Call 200 (251117)  
 Job Location:  
 Contractor: Jim Smith Contracting Co, LLC

Plant: 100  
 3/25/2026 8:42:42 AM

Tech: J. Coppage - A  
 PC: Jay Ross Jarvis



**Structure ID: 1469 58**

**P2 BX024024-08LD08**

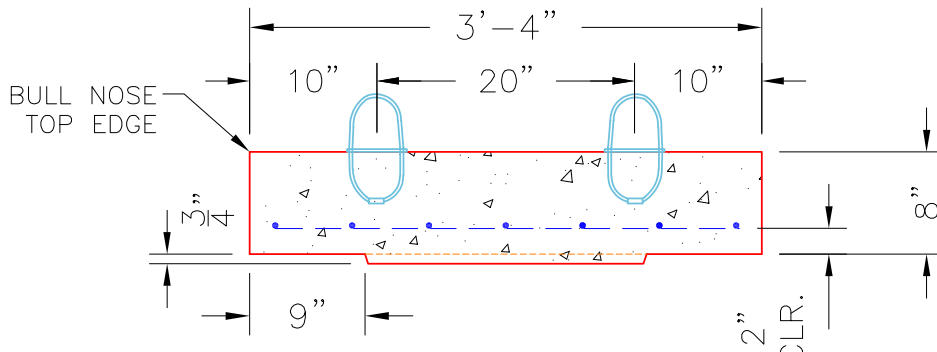
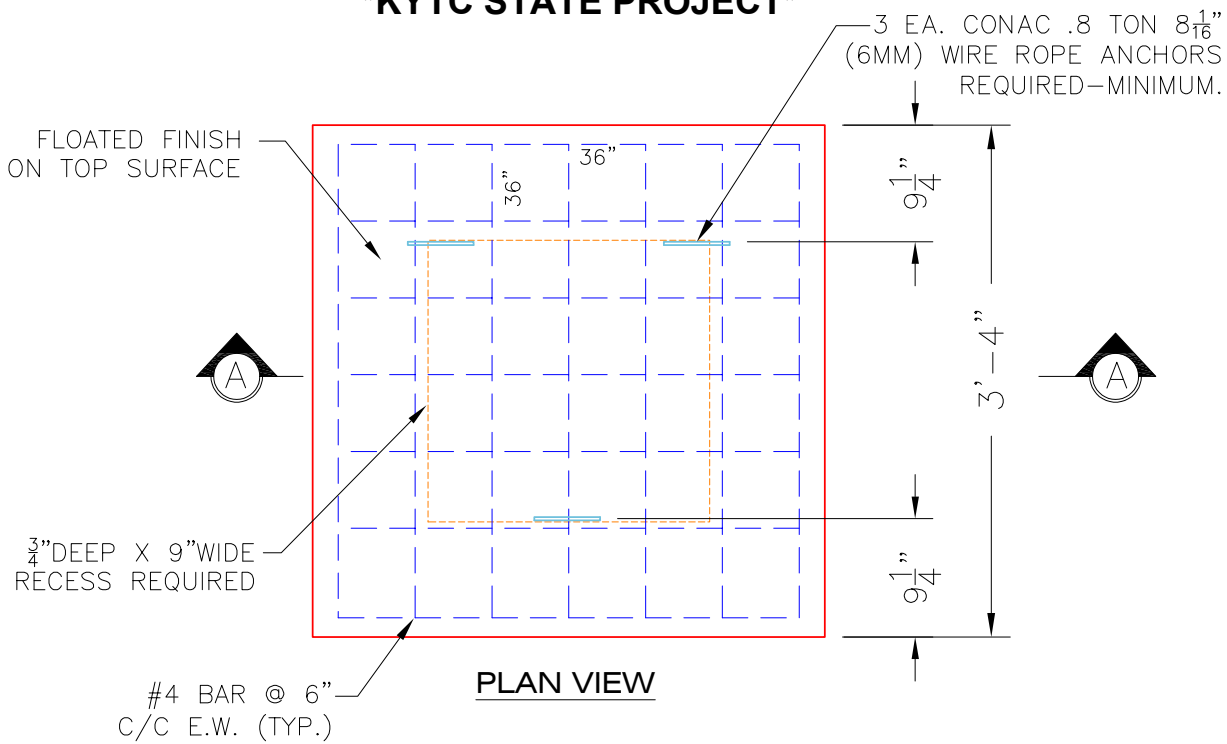
**CB FLAT TOP 8"W SOLID**

- P2) 24" x 24" - CB FLAT TOP 8"W SOLID - 8"
- P1) 24" x 24" - BOX BASE 8inW, 8inF, Variable Ht - 26"
- 1) 24" x 24" - Conseal CS-102 1.00"
- 2) Hole - 24"

1074 lb  
 2853 lb  
 0 lb  
 0 lb  
 -----  
 Structure Total: 3927 lb

**Structure Notes:**  
 \*\*\*KYTC STATE PROJECT\*\*  
 1. SOLID TOP SLAB - NO CASTING.  
 2. KYTC JUNCTION BOX / PER ASTM C913 SPEC'S.  
 3. CONCRETE = 4,000 PSI AT 28 DAYS.  
 4. REINFORCING PER ASTM A615 (GRADE 60).  
 - TOP SLAB (As .62) #5 BARS AT 6" C.C.E.W.  
 - WALLS (As .31) #5 BARS AT 12" C.C.E.W.  
 - FLOOR (As .31) #5 BARS AT 12" C.C.E.W.

**\*KYTC STATE PROJECT\***



**NOTES:**

- CONCRETE: 4500 PSI @ 28 DAYS.
- MANUFACTURE TO KYTC SPECIFICATIONS.
- REINFORCING: #4 BAR @ 6" C/C E.W.-GRADE 60.  
 (BOTTOM LAYER ONLY)
- 3 EA. CONAC WIRE LOOP LIFTERS REQUIRED.
- KYTC CERTIFICATIONS REQUIRED.

[#4 BAR CUT LIST](#)  
 14 EA. @ 36"

Coating (Int): Coating (Ext):	Seam Up: Flat Seam Dn: Flat	Wall Thickness: 8"	Height (Ext): 8"	Weight (Net): 1074 lb Volume (Net): 0.27cu.yd
----------------------------------	--------------------------------	--------------------	------------------	--