

Job Name: 25-3488 - South Park Industrial Park  
 Job Location: Sebree, KY  
 Contractor: Winwater Hartford KY Co.

Plant: 100  
 12/3/2025 2:23:35 PM

Tech: J. Horsley - F  
 PC: A. Chambers



**Structure ID: MH-3**

**P1 MH048BA36**

**MH BASE T/n**

P4) 24" - CASTING HEIGHT - 7"	0 lb
P3) 24" - GRADE RING F/F - 4"	270 lb
P2) 48" - ECC CONE w/ 24" HOLE F/G - 42"	3200 lb
P1) 48" - MH BASE T/n - 36"	3749 lb
1) JOINT WRAP - 0.065"x6"x50' CONSEAL CS212	0 lb
1) JOINT WRAP PRIMER - CONSEAL CS-75 (1 gal.)	0 lb
1) 48" - MH INVERT CHANNEL - FULL HEIGHT	1440 lb
1) SPECIAL EXTERNAL COATING	0 lb
1) CASTING - HOE MC-375 F/C Sanitary	271 lb
1) 48" - Conseal CS-102 1.00" (Double)	0 lb
2) PSX - 12-08 NYLO	16 lb
6) MH Step ML-10-TDS-NCR - 10"	0 lb
<b>Structure Total:</b>	<b>8946 lb</b>

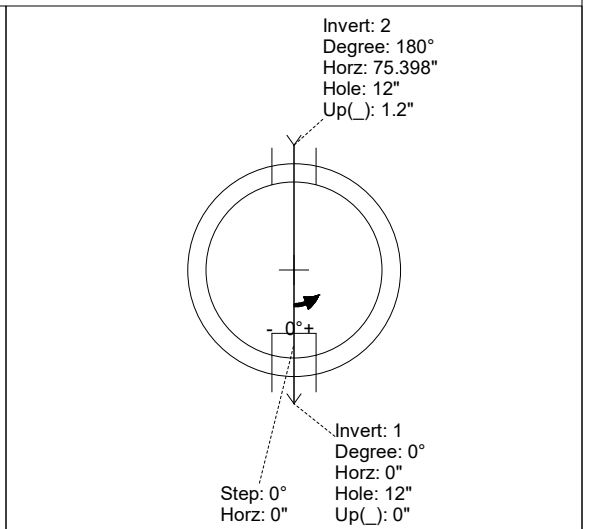
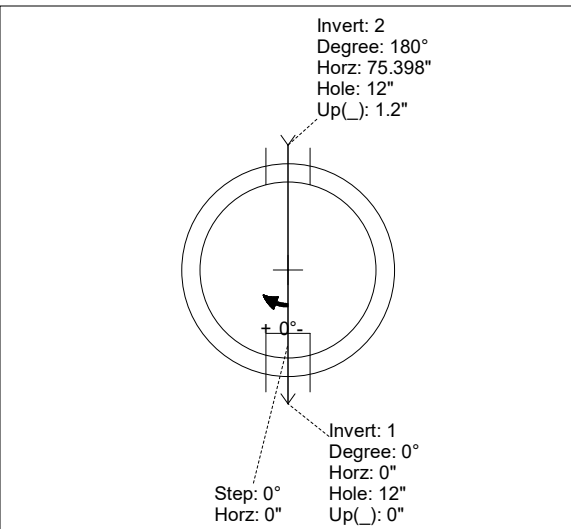
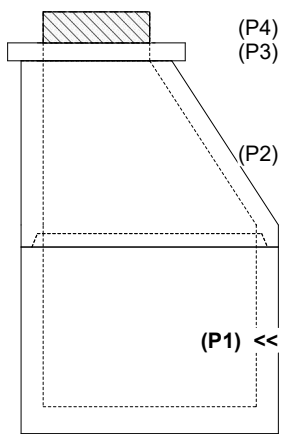
**Structure Notes:**  
 1. PER ASTM C-478 SPECIFICATIONS  
 2. CONCRETE: 4,000 PSI AT 28 DAYS  
 3. REINFORCEMENT: PER ASTM A615  
 4. CASTING BY I-CAST (HOE MC-375 FRAME & COVER "SANITARY")  
 5. CARBOLINE 300M EXTERIOR COATING BY I-CAST

Rim: 387.25' Rim to Invert: 7.25' Slack: 0" Sump: 2" Step Position: 0"

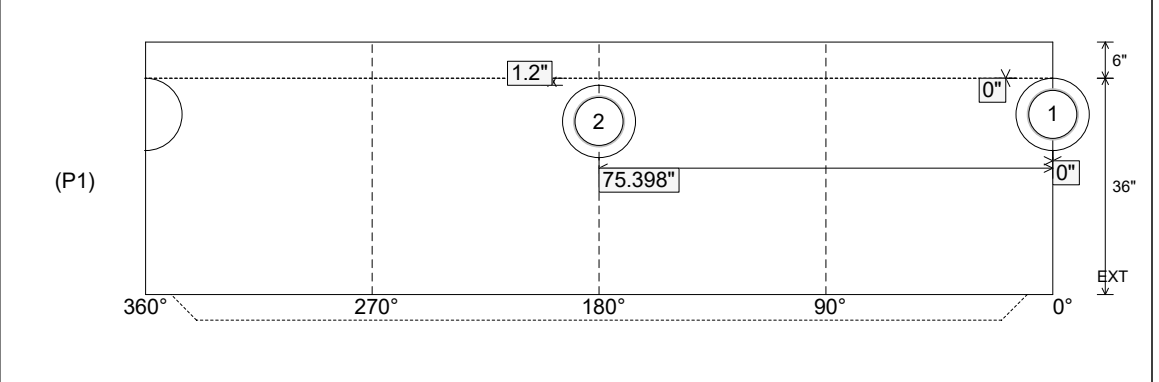
Position	Elev	Angle	Ext. (cw)	Pipe	Pipe OD	Connector	Hole	Horz Size	Up ( )	Offset
Invert 1	380'	0°	0"	8" PVC SDR35	8.5"	PSX 12-08 NYLO	12"	12.129"	0"	0"
Invert 2	380.1'	180°	91.106"	8" PVC SDR35	8.5"	PSX 12-08 NYLO	12"	12.129"	1.2"	0"
Invert 3										
Invert 4										
Invert 5										
Invert 6										
Invert 7										
Invert 8										

RIGHT-SIDE UP VIEW (int. dimensions)

UPSIDE-DOWN VIEW (int. dimensions)



INSIDE WALL DIMENSIONS

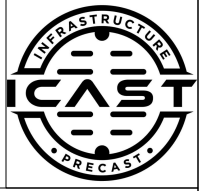


Coating (Int): Coating (Ext):	Seam Up: Tongue Seam Dn: n/a	Wall Thickness: 5" Floor Height: 6"	Height (Int): 36" Height (Ext): 42"	Weight (Net): 3749 lb Volume (Net): 0.96cu.yd
----------------------------------	---------------------------------	--	--	--

Job Name: 25-3488 - South Park Industrial Park  
 Job Location: Sebree, KY  
 Contractor: Winwater Hartford KY Co.

Plant: 100  
 12/3/2025 2:23:35 PM

Tech: J. Horsley - F  
 PC: A. Chambers



**Structure ID: MH-3**

**P1 MH048BA36**

**MH BASE T/n**

- P4) 24" - CASTING HEIGHT - 7"
- P3) 24" - GRADE RING F/F - 4"
- P2) 48" - ECC CONE w/ 24" HOLE F/G - 42"
- P1) 48" - MH BASE T/n - 36"
- 1) JOINT WRAP - 0.065"x6"x50' CONSEAL CS212
- 1) JOINT WRAP PRIMER - CONSEAL CS-75 (1 gal.)
- 1) 48" - MH INVERT CHANNEL - FULL HEIGHT
- 1) SPECIAL EXTERNAL COATING
- 1) CASTING - HOE MC-375 F/C Sanitary
- 1) 48" - Conseal CS-102 1.00" (Double)
- 2) PSX - 12-08 NYLO
- 6) MH Step ML-10-TDS-NCR - 10"

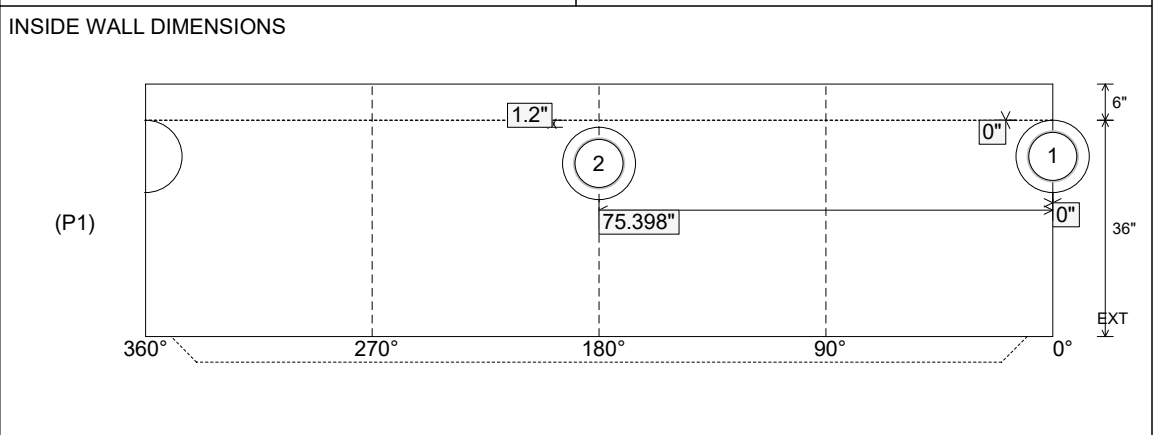
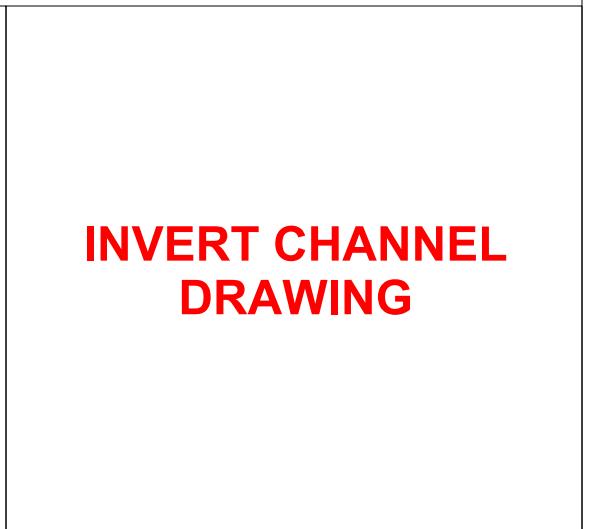
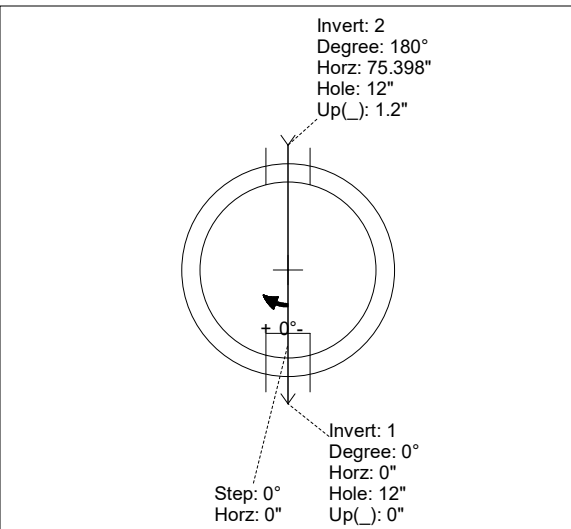
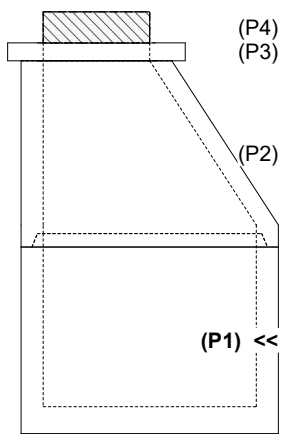
<ul style="list-style-type: none"> <li>0 lb</li> <li>270 lb</li> <li>3200 lb</li> <li>3749 lb</li> <li>0 lb</li> <li>0 lb</li> <li>1440 lb</li> <li>0 lb</li> <li>271 lb</li> <li>0 lb</li> <li>16 lb</li> <li>0 lb</li> </ul>	<p><b>Structure Notes:</b></p> <ol style="list-style-type: none"> <li>1. PER ASTM C-478 SPECIFICATIONS</li> <li>2. CONCRETE: 4,000 PSI AT 28 DAYS</li> <li>3. REINFORCEMENT: PER ASTM A615</li> <li>4. CASTING BY I-CAST (HOE MC-375 FRAME &amp; COVER "SANITARY")</li> <li>5. CARBOLINE 300M EXTERIOR COATING BY I-CAST</li> </ol>
--	---

Structure Total: 8946 lb

Rim: 387.25' Rim to Invert: 7.25' Slack: 0" Sump: 2" Step Position: 0°

Position	Elev	Angle	Ext. (cw)	Pipe	Pipe OD	Connector	Hole	Horz Size	Up ( )	Offset
Invert 1	380'	0°	0"	8" PVC SDR35	8.5"	PSX 12-08 NYLO	12"	12.129"	0"	0"
Invert 2	380.1'	180°	91.106"	8" PVC SDR35	8.5"	PSX 12-08 NYLO	12"	12.129"	1.2"	0"
Invert 3										
Invert 4										
Invert 5										
Invert 6										
Invert 7										
Invert 8										

**RIGHT-SIDE UP VIEW (int. dimensions)      UPSIDE-DOWN VIEW (int. dimenions)**



Coating (Int): Coating (Ext):	Seam Up: Tongue Seam Dn: n/a	Wall Thickness: 5" Floor Height: 6"	Height (Int): 36" Height (Ext): 42"	Weight (Net): 3749 lb Volume (Net): 0.96cu.yd
----------------------------------	---------------------------------	--	--	--

**Job Number:**

25-3488

**Job Name:**

South Park Industrial Park

**Structure:**

MH-3

**Note:**

Structure To Receive Special  
External Coating – Carboline 300M