

**Job Name: 25-3480 - Noel Ave Sewer Improvements Ph 3**  
**Job Location: Madisonville, KY 42431**  
**Contractor: Luttrell & Sons, LLC**

PC: Andy Chambers  
 TECH: J. Horsley - A  
 Plant: 100



Structure ID: **38+20**  
 Spec: Sanitary  
 Type: SAN.MH w/Xypex  
 Size: 60"

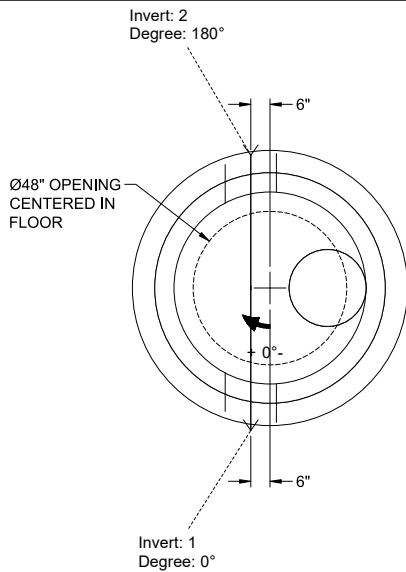
Rim: 7.25'  
 Invert: 1'  
 Rim to Invert: 6.25'

Sump: 12'  
 Floor (Top): 0'  
 Floor Height: 12"

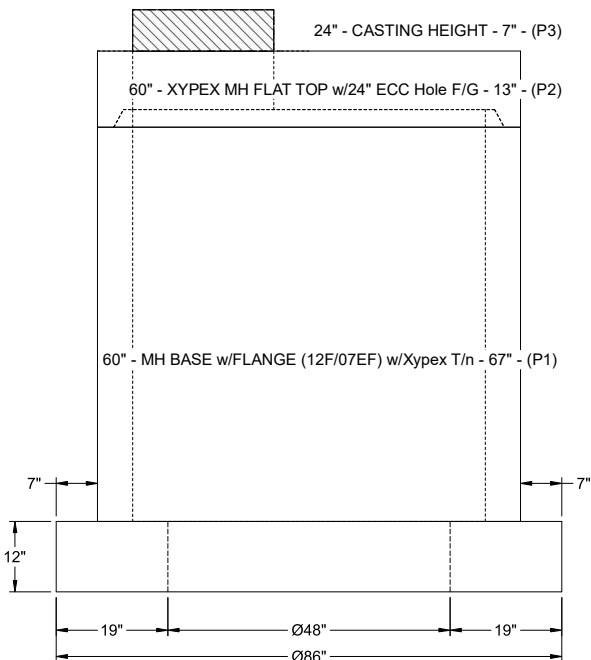
Floor (Bot): -1'  
 Overall Height: 8.25'  
 Slack: 0"

- Structure Notes:**
- PER ASTM C-478 SPECIFICATIONS
  - CONCRETE: 5,000 PSI AT 28 DAYS
  - REINFORCEMENT:
    - FLAT LID: #5 BAR @ 6" C.C. E.W. (GRADE 60)
    - BASE WALLS: PER ASTM A615
    - BASE FLOOR: DBL MAT #5 BAR @ 6" C.C. E.W. (GRADE 60)
  - NO STEPS
  - XYPEX C-1000 ADMIXTURE REQUIRED
  - HOE MC-375 FRAME & SELF-SEAL COVER "SANITARY" SUPPLIED BY ICAST
  - INVERTS 1 & 2 OFFSET 6" FROM CENTER
  - 48" DIA. OPENING REQUIRED THROUGH BASE FLOOR

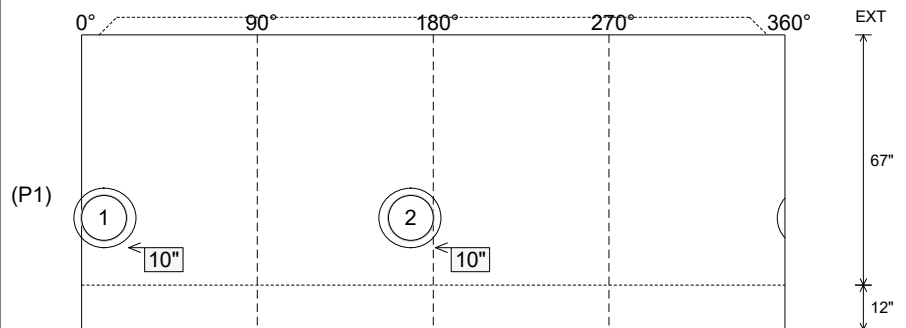
- STRUCTURE SUMMARY:**
- P3) 24" - CASTING HEIGHT - 7" 0 lb
  - P2) 60" - XYPEX MH FLAT TOP w/24" ECC Hole F/G - 13" 2701 lb
  - P1) 60" - MH BASE w/FLANGE (12F/07EF) w/Xypex T/n - 67" 10813 lb
  - 1) SECONDARY POUR - Extended Flange 0 lb
  - 1) ADMIXTURE XYPEX C-1000 RED 0 lb
  - 1) CASTING - HOE MC-375-SS F/C Sanitary 271 lb
  - 1) 60" - Conseal CS-102 1.00" (Double) 0 lb
  - 2) Hole - 16 0 lb
- Structure Total: 13785 lb



| Position | Elev  | Angle | Pipe          | Pipe OD | Hole | Connector | Up ( ) | Ref |
|----------|-------|-------|---------------|---------|------|-----------|--------|-----|
| Rim      | 7.25' |       |               |         |      |           |        |     |
| Reducer  |       |       |               |         |      |           |        |     |
| Invert 1 | 1'    | 0°    | 12" PVC SDR35 | 12.5"   | 16"  | Hole 16   | 10"    | P1  |
| Invert 2 | 1'    | 180°  | 12" PVC SDR35 | 12.5"   | 16"  | Hole 16   | 10"    | P1  |
| Invert 3 |       |       |               |         |      |           |        |     |
| Invert 4 |       |       |               |         |      |           |        |     |
| Invert 5 |       |       |               |         |      |           |        |     |
| Invert 6 |       |       |               |         |      |           |        |     |
| Invert 7 |       |       |               |         |      |           |        |     |
| Invert 8 |       |       |               |         |      |           |        |     |



**Cast (Int. Dim.) - Interior Dimensions**



Submittal Drawing  
 3/6/2026 5:53:53 AM

SUBMITTAL  
 APPROVED BY: