

**Job Name: 25-3480 - Noel Ave Sewer Improvements Ph 3**  
**Job Location: Madisonville, KY 42431**  
**Contractor: Luttrell & Sons, LLC**

PC: Andy Chambers  
TECH: J. Horsley - A  
Plant: 100



Structure ID: **16-53480 (1)**

Spec: Custom Slabs  
Type: Cust. Base Slab (Solid)  
Size: 72" x 72"

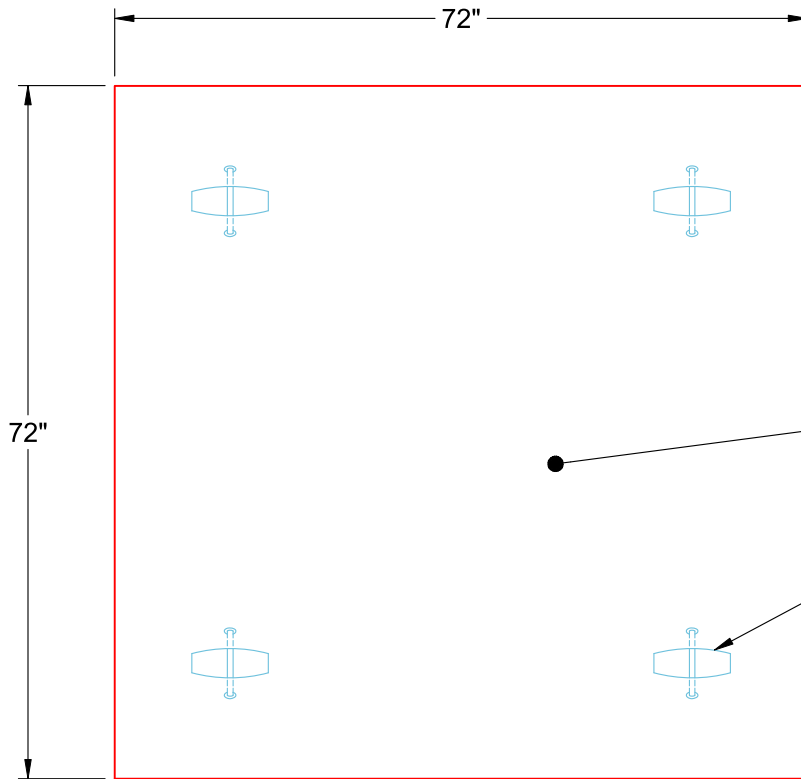
Rim: 0'  
Invert: 0'  
Rim to Invert: 0'

Sump: 0"  
Floor (Top): -0.667'  
Floor Height: 0"

Floor (Bot): -0.667'  
Overall Height: 0.667'  
Slack: 0"

### GENERAL NOTES

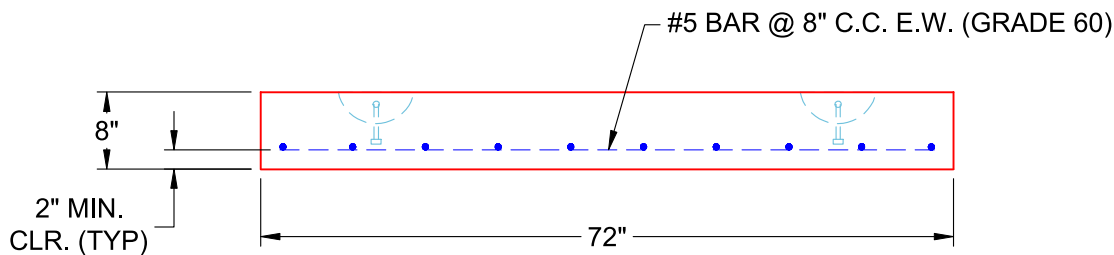
1. MANUFACTURED PER ASTM C-913 SPECIFICATIONS
2. CONCRETE: 4,500 PSI AT 28 DAYS
3. REINFORCEMENT: #5 BAR @ 8" C.C. E.W. (GRADE 60)
4. WEIGHT: 3,480 LBS



SOLID SLAB - NO OPENING(S)

4 EA. CONAC A-ANCHORS FOR PLANT & FIELD HANDLING

**PLAN VIEW**



**FRONT VIEW**