

**Job Name: 25-3479 - Phase 24 Wastewater System Improvements**  
**Job Location: Columbia, KY**  
**Contractor: Cumberland Pipeline LLC**

PC: E. Bradley  
 TECH: J. Coppage - F  
 Plant: 100



Structure ID: B-2

Spec: Sanitary  
 Type: SAN.MH w/ConBlock-CDA Red  
 Size: 48"

Rim: 730.81'  
 Invert: 725.81'  
 Rim to Invert: 5'

Sump: 2"  
 Floor (Top): 725.643'  
 Floor Height: 8"

Floor (Bot): 724.977'  
 Overall Height: 5.75'  
 Slack: 1"

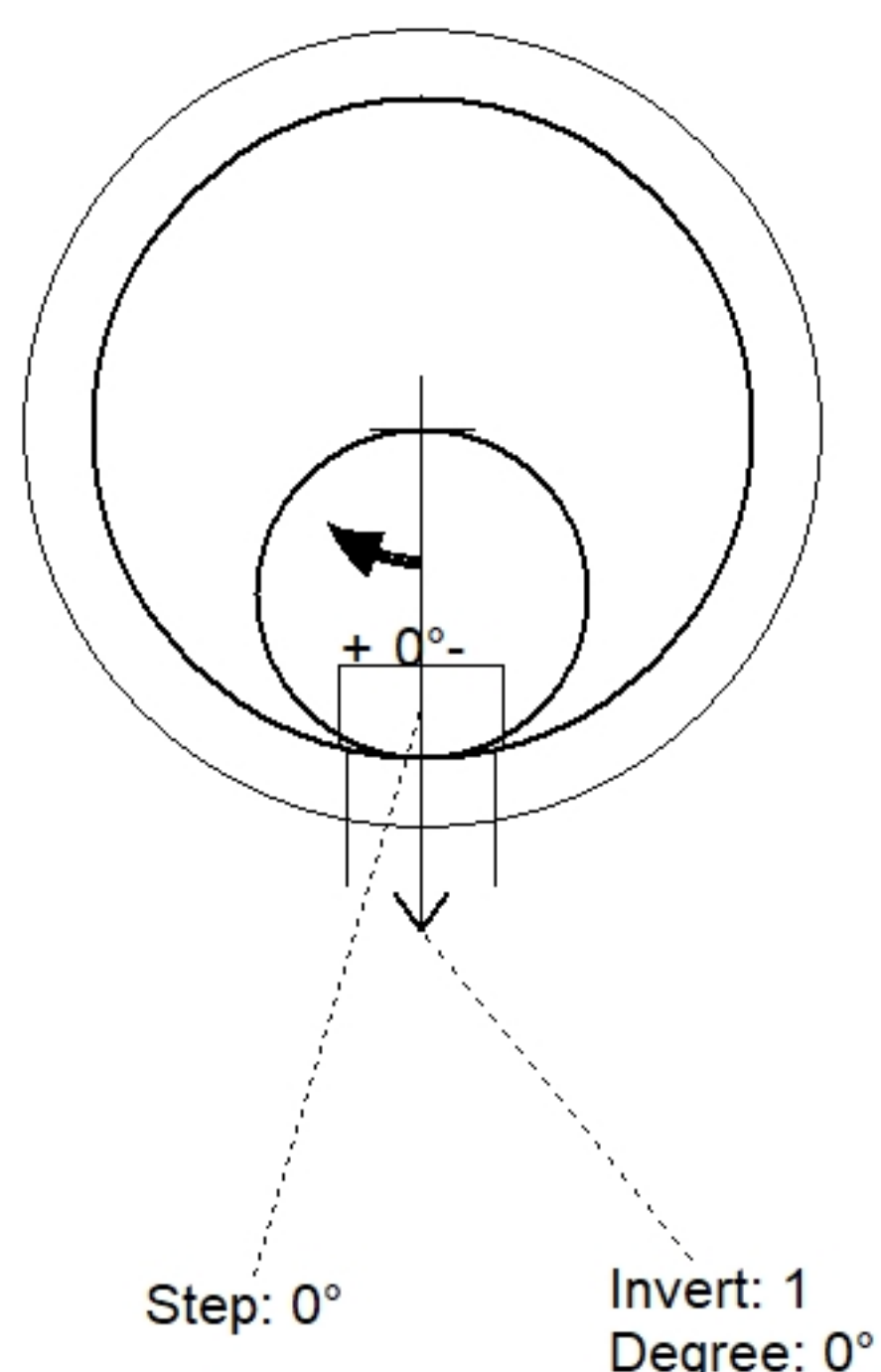
Structure Notes:

1. PER ASTM C478 SPECIFICATIONS.
2. CONCRETE = 4,000 PSI AT 28 DAYS.
3. ADMIXTURE = CONBLOCK CDA RED.
4. CASTING BY ICAST (HOE MC-375 F/C SANITARY)
5. 8.5" EXTERNAL CHIMNEY SEAL BY ICAST.
6. ICAST TO PROVIDE AN ADDITIONAL 12-08 ND BOOT AND A 12-06 ND BOOT.

REINFORCING PER ASTM A615 (GRADE 60).  
 - TOP SLAB = H20 LOADING.  
 - RISER/WALLS (As .12)  
 - FLOOR (As .31) #5 BARS AT 12" C.C.E.W.

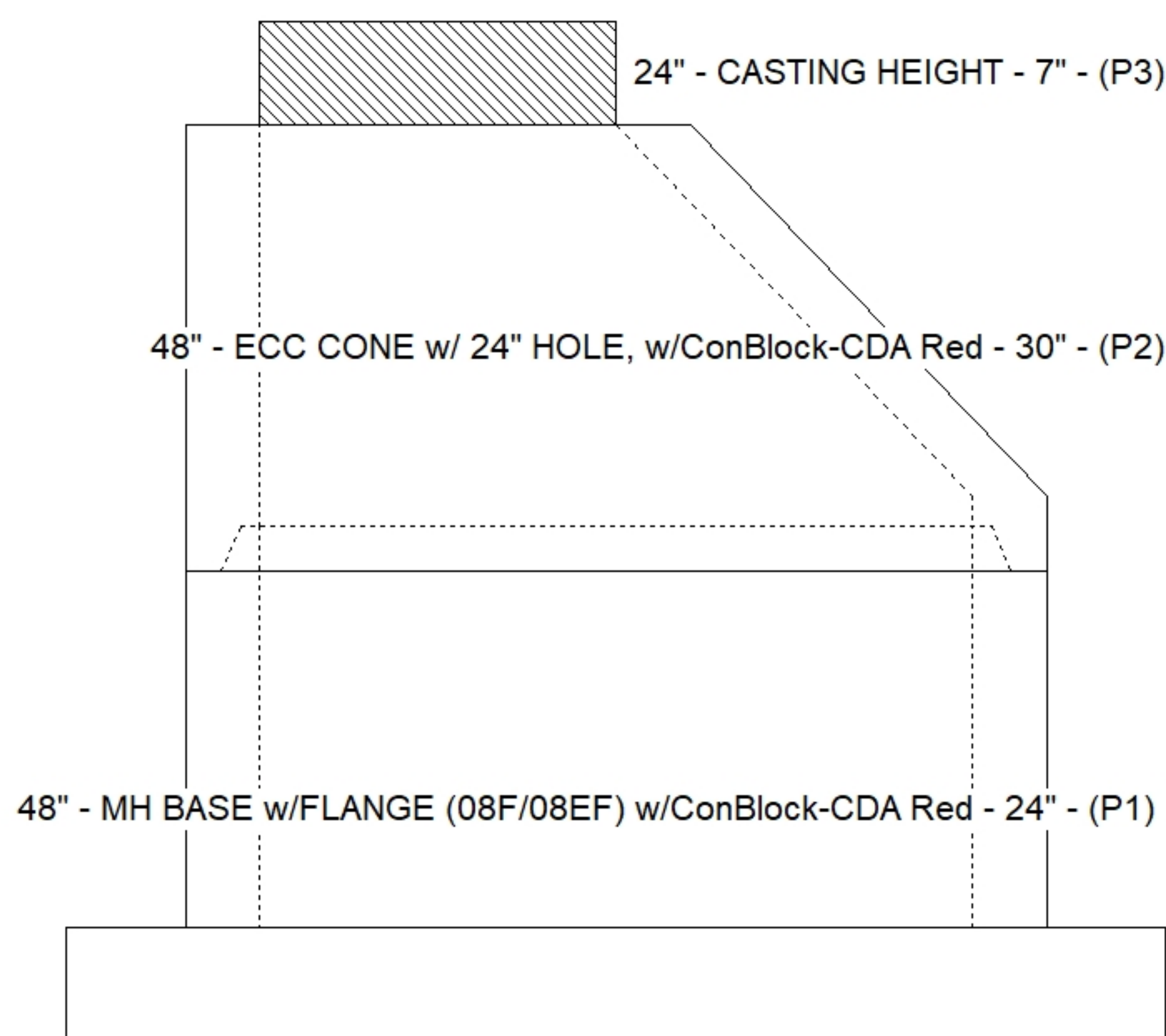
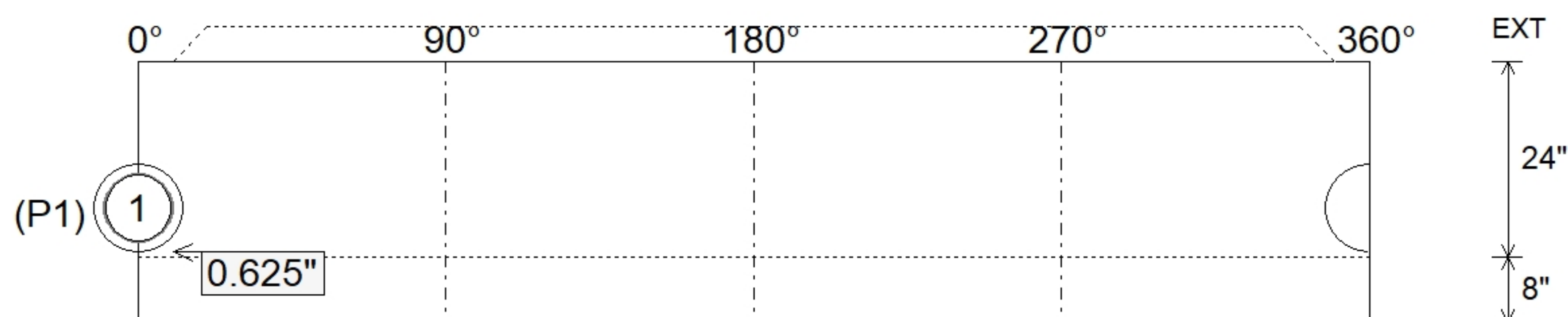
STRUCTURE SUMMARY:

P3) 24" - CASTING HEIGHT - 7"	0 lb
P2) 48" - ECC CONE w/ 24" HOLE, w/ConBlock-CDA Red - 30"	1961 lb
P1) 48" - MH BASE w/FLANGE (08F/08EF) w/ConBlock-CDA Red - 24"	4525 lb
1) ADMIXTURE CONBLOCK CDA RED	0 lb
1) 48" - MH INVERT CHANNEL w/ConBlock-CDA Red - FULL HEIGHT	1440 lb
1) JOINT WRAP PRIMER - CONSEAL CS-75 (1 gal.)	0 lb
1) JOINT WRAP - 0.065"x6"x50' CONSEAL CS212	0 lb
1) CASTING - HOE MC-375 F/C Sanitary	271 lb
1) 48" - Conseal CS-102 1.00" (Double)	0 lb
1) Quik-Lok - QL-08-C	1 lb
5) MH Step ML-10-TDS-NCR - 10"	0 lb
<b>Structure Total:</b>	<b>8199 lb</b>



Position	Elev	Angle	Pipe	Pipe OD	Hole	Connector	Up (")	Ref
Rim	730.81'							
Reducer								
Invert 1	725.81'	0°	8" PVC SDR35	8.5"	10.75"	Quik-Lok QL-08-C	0.625"	P1
Invert 2								
Invert 3								
Invert 4								
Invert 5								
Invert 6								
Invert 7								
Invert 8								

**Default - Interior Dimensions**



Submittal Drawing  
 3/31/2026 10:28:33 AM

SUBMITTAL  
 APPROVED BY: