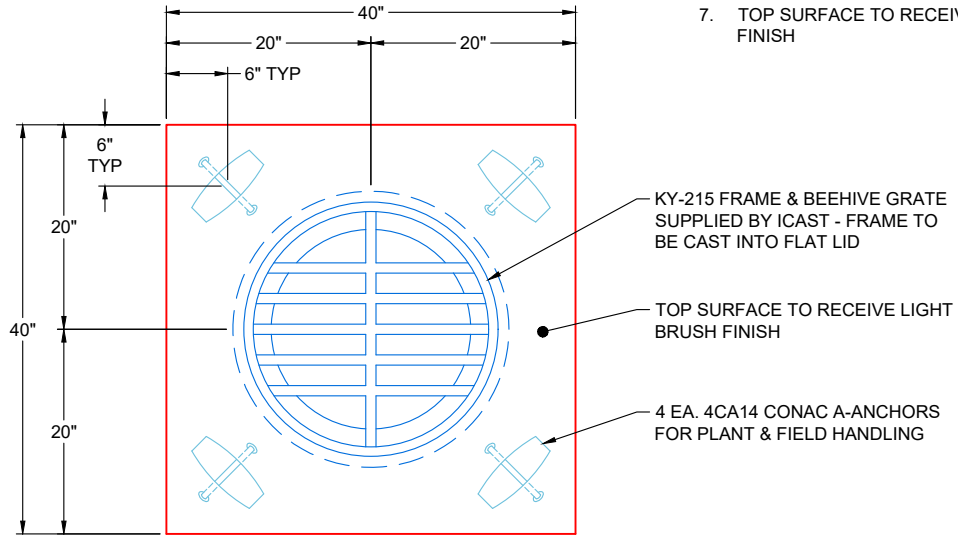
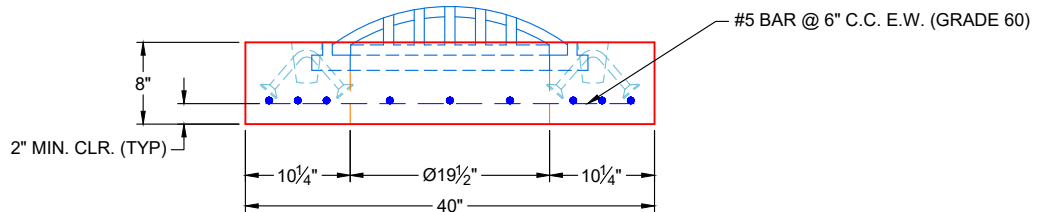


GENERAL NOTES:


1. MANUFACTURED TO ASTM C-913 (LATEST REVISION)
2. CONCRETE: 4,500 PSI AT 28 DAYS
3. REINFORCEMENT: #5 BAR @ 6" C.C. E.W. (GRADE 60) - 2" MIN. REBAR CLEARANCE (TYP)
4. WEIGHT: 945 LBS
5. KY-215 FRAME & BEEHIVE GRATE SUPPLIED BY ICAST - FRAME TO BE CAST INTO FLAT LID
6. LIFTERS: 4 EA. 4CA14 CONAC A-ANCHORS FOR PLANT & FIELD HANDLING
7. TOP SURFACE TO RECEIVE LIGHT BRUSH FINISH



**PLAN VIEW
(RIGHT SIDE UP)**



**FRONT VIEW
(RIGHT SIDE UP)**

PRODUCTION WORK ORDER		PRODUCT I.D.: BX024024-08LD08S	DESCRIPTION: 40" X 40" X 8" FLAT LID SPECIAL	
	QUALITY CONTROL CHECKLIST	PRODUCT VIEW: RIGHT SIDE UP	CUSTOMER: COVENANT CONSTRUCTORS, LLC	
	<input type="checkbox"/> ALL DIMENSIONS CORRECT.	PLANT: BEAVER DAM, KY	PROJECT: TENNESSEE QUICK CASH	
	<input type="checkbox"/> LIFTERS INSTALLED.	WEIGHT: 945 LBS	STRUCTURE: 3-53469	
	<input type="checkbox"/> HOLE LOCATION(S) CORRECT.	TOP SECTION JOINT: FLAT	QUOTE / SALES ORDER NO: 25-3469	
	<input type="checkbox"/> REINFORCING CORRECT.	BASE SECTION JOINT: N / A	PE: J.H. ROSS	DRAWN BY: K. CARDWELL
	<input type="checkbox"/> CASTING LOCATION & ORIENTATION.	QC CHECK INITIALS:	DATE: 12/05/25	SCALE: NTS
	<input type="checkbox"/> EDGES CHAMFERED.			PG. 1 OF 1
<input type="checkbox"/> SHIPLAP JOINT INSTALLED.				