

Job Name: 25-3462B - Corvette Museum Material
 Job Location: Bowling Green, KY
 Contractor: National Corvette Museum c/o Scotty's Contracting

Plant: 100
 2/6/2026 9:30:21 AM

Tech: J. Horsley
 PC: C. Goff



Structure ID: DI-11 (3)

P2 MH048LD12-24SQ

MH FLAT TOP w/24"x24" Hole F/G

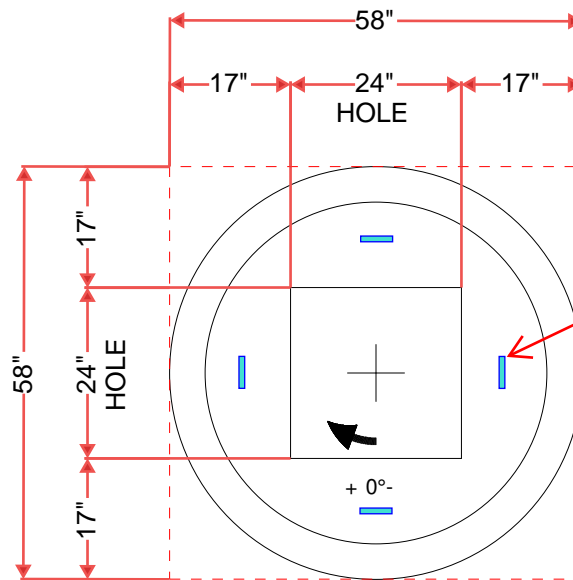
- P3) 24" x 24" - CASTING HEIGHT - 2"
- P2) 48" - MH FLAT TOP w/24"x24" Hole F/G - 12"
- P1) 48" - MH BASE Custom Ht T/n - 38"
- 1) CASTING - JBS 4190-L F/G
- 1) 48" - Conseal CS-102 1.00"
- 1) Hole - 20
- 3) MH Step ML-10-TDS-NCR - 10"

0 lb
 1500 lb
 3850 lb
 335 lb
 0 lb
 0 lb
 0 lb

 Structure Total: 5685 lb

Structure Notes:
 1. PER ASTM C478 SPECIFICATIONS.
 2. CONCRETE = 4,000 PSI AT 28 DAYS.
 3. NO INVERT CHANNEL.
 4. CASTING BY I-CAST (JBS 4190-L F/G).

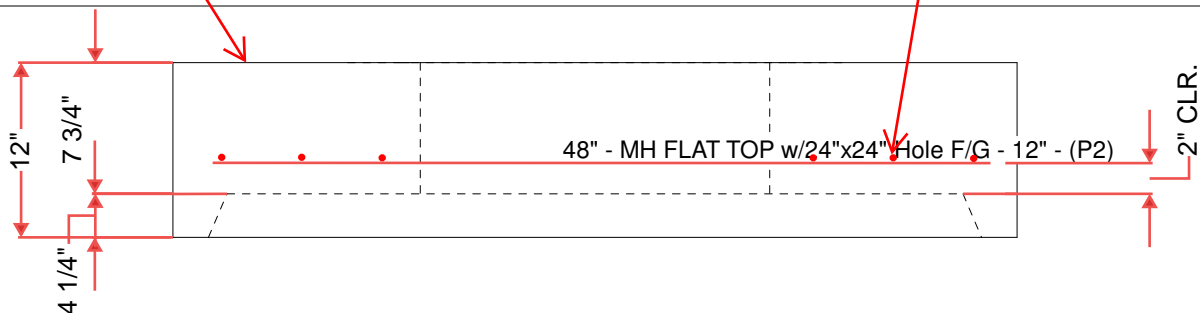
REINFORCING PER ASTM A615 (GRADE 60).
 - TOP SLAB (As .62) #5 BARS AT 6" C.C.E.W..
 - RISER/WALLS (As .18)
 - FLOOR (As .37) #5 BARS AT 10" C.C.E.W.



4 EA. CONAC WRA016
 WIRE LOOP LIFTERS

FLOAT FINISH
 ON TOP SURFACE

#5 BARS AT 6" C.C.E.W.
 2" CLR. TYP.



Coating (Int):
 Coating (Ext):

Seam Up: Flat
 Seam Dn: Groove

Wall Thickness: 5"

Height (Ext): 12"

Weight (Net): 1500 lb
 Volume (Net): 0.37cu.yd