

Job Name: 25-3462B - Corvette Museum Material
 Job Location: Bowling Green, KY
 Contractor: National Corvette Museum c/o Scotty's Contracting

Plant: 100

2/6/2026 9:29:41 AM

Tech: J. Horsley

PC: C. Goff



Structure ID: DI-10 (2)

P2 MH048LD12-24SQ

MH FLAT TOP w/24"x24" Hole F/G

- P3) 24" x 24" - CASTING HEIGHT - 2"
- P2) 48" - MH FLAT TOP w/24"x24" Hole F/G - 12"
- P1) 48" - MH BASE Custom Ht T/n - 50"
- 1) CASTING - JBS 4190-L F/G
- 1) 48" - Conseal CS-102 1.00"
- 1) Hole - 24"
- 1) Hole - 20"
- 4) MH Step ML-10-TDS-NCR - 10"

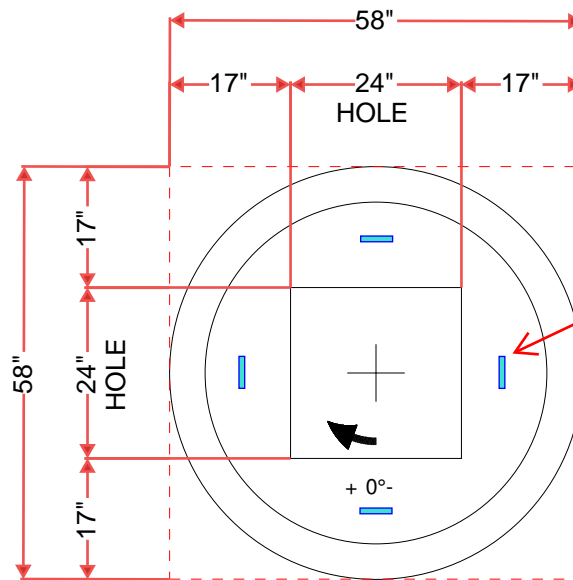
0 lb
 1500 lb
 4491 lb
 335 lb
 0 lb
 0 lb
 0 lb
 0 lb

 Structure Total: 6326 lb

Structure Notes:

1. PER ASTM C478 SPECIFICATIONS.
2. CONCRETE = 4,000 PSI AT 28 DAYS.
3. NO INVERT CHANNEL.
4. CASTING BY I-CAST (JBS 4190-L F/G).

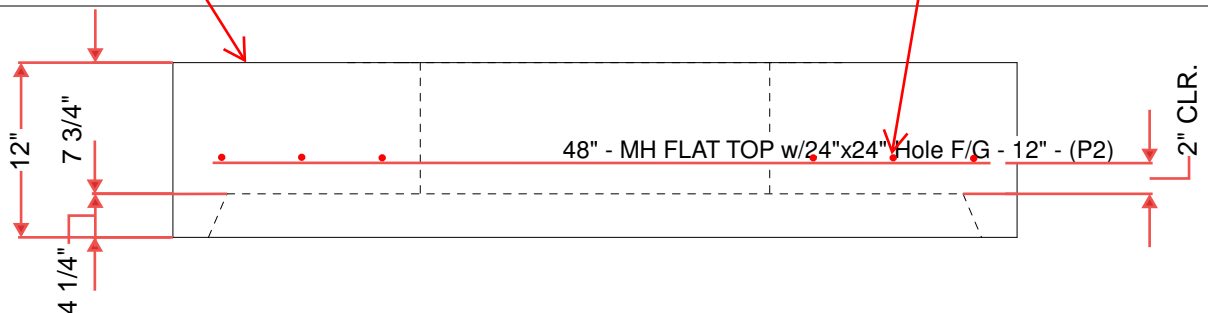
REINFORCING PER ASTM A615 (GRADE 60).
 - TOP SLAB (As .62) #5 BARS AT 6" C.C.E.W..
 - RISER/WALLS (As .18)
 - FLOOR (As .37) #5 BARS AT 10" C.C.E.W.



4 EA. CONAC WRA016 WIRE LOOP LIFTERS

FLOAT FINISH ON TOP SURFACE

#5 BARS AT 6" C.C.E.W. 2" CLR. TYP.



Coating (Int):
 Coating (Ext):

Seam Up: Flat
 Seam Dn: Groove

Wall Thickness: 5"

Height (Ext): 12"

Weight (Net): 1500 lb
 Volume (Net): 0.37cu.yd