

Job Name: 25-3462B - Corvette Museum Material
 Job Location: Bowling Green, KY
 Contractor: National Corvette Museum c/o Scotty's Contracting

Plant: 100

2/6/2026 9:30:58 AM

Tech: J. Horsley

PC: C. Goff



Structure ID: DI-10 (2)

P1 MH048BAVF

MH BASE Custom Ht T/n

- P3) 24" x 24" - CASTING HEIGHT - 2"
- P2) 48" - MH FLAT TOP w/24"x24" Hole F/G - 12"
- P1) 48" - MH BASE Custom Ht T/n - 50"
- 1) CASTING - JBS 4190-L F/G
- 1) 48" - Conseal CS-102 1.00"
- 1) Hole - 24
- 1) Hole - 20
- 4) MH Step ML-10-TDS-NCR - 10"

0 lb
 1500 lb
 4491 lb
 335 lb
 0 lb
 0 lb
 0 lb
 0 lb
 0 lb

 Structure Total: 6326 lb

Structure Notes:

1. PER ASTM C478 SPECIFICATIONS.
2. CONCRETE = 4,000 PSI AT 28 DAYS.
3. NO INVERT CHANNEL.
4. CASTING BY I-CAST (JBS 4190-L F/G).

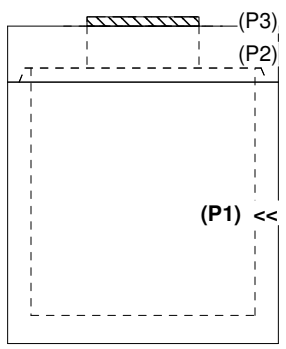
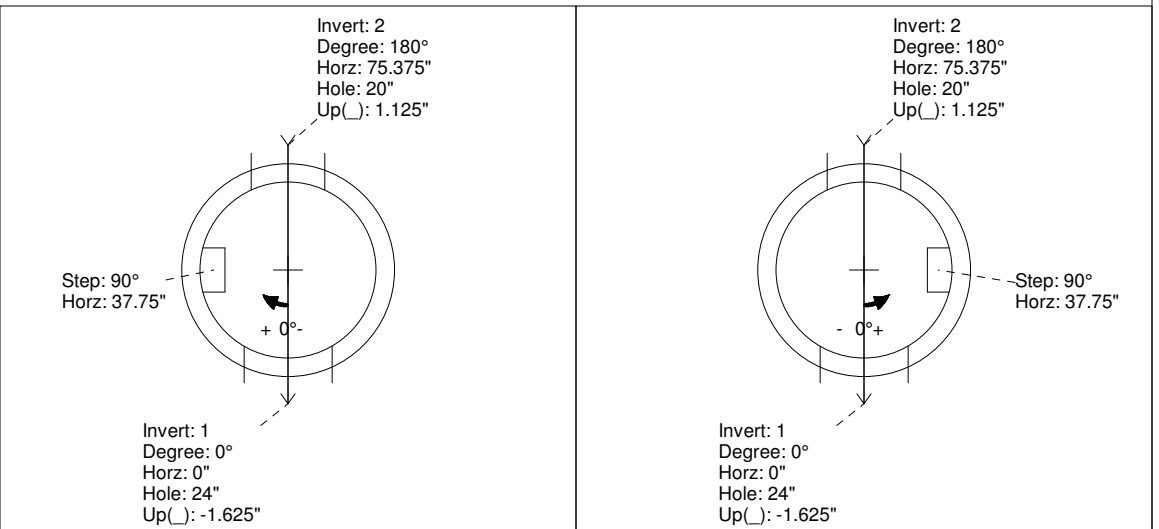
REINFORCING PER ASTM A615 (GRADE 60).
 - TOP SLAB (As .62) #5 BARS AT 6" C.C.E.W..
 - RISER/WALLS (As .18)
 - FLOOR (As .37) #5 BARS AT 10" C.C.E.W.

Rim: 504.8' Rim to Invert: 5.34' Slack: 0.08" Sump: 0" Step Position: 90°

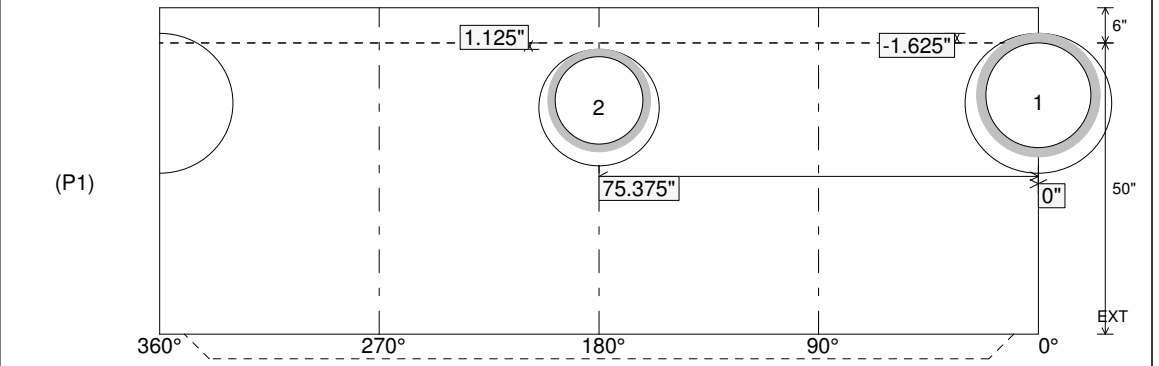
Position	Elev	Angle	Ext. (cw)	Pipe	Pipe OD	Connector	Hole	Horz Size	Up ()	Offset
Invert 1	499.46'	0°	0"	18" HDPE	21.2"	Hole 24	24"	25.133"	-1.625"	0"
Invert 2	499.66'	180°	91.125"	15" HDPE	17.6"	Hole 20	20"	20.629"	1.125"	0"
Invert 3										
Invert 4										
Invert 5										
Invert 6										
Invert 7										
Invert 8										

RIGHT-SIDE UP VIEW (int. dimensions)

UPSIDE-DOWN VIEW (int. dimensions)



INSIDE WALL DIMENSIONS



Coating (Int): Coating (Ext):	Seam Up: Tongue Seam Dn: n/a	Wall Thickness: 5" Floor Height: 6"	Height (Int): 50" Height (Ext): 56"	Weight (Net): 4491 lb Volume (Net): 1.15cu.yd
----------------------------------	---------------------------------	--	--	--