

Job Name: 25-3462B - Corvette Museum Material  
 Job Location: Bowling Green, KY  
 Contractor: National Corvette Museum c/o Scotty's Contracting

Plant: 100

2/6/2026 9:30:58 AM

Tech: J. Horsley

PC: C. Goff



**Structure ID: DI-10 (2)**

**P1 MH048BAVF**

**MH BASE Custom Ht T/n**

- P3) 24" x 24" - CASTING HEIGHT - 2"
- P2) 48" - MH FLAT TOP w/24"x24" Hole F/G - 12"
- P1) 48" - MH BASE Custom Ht T/n - 50"
- 1) CASTING - JBS 4190-L F/G
- 1) 48" - Conseal CS-102 1.00"
- 1) Hole - 24
- 1) Hole - 20
- 4) MH Step ML-10-TDS-NCR - 10"

0 lb  
 1500 lb  
 4491 lb  
 335 lb  
 0 lb  
 0 lb  
 0 lb  
 0 lb  
 0 lb  
 Structure Total: 6326 lb

Structure Notes:

1. PER ASTM C478 SPECIFICATIONS.
2. CONCRETE = 4,000 PSI AT 28 DAYS.
3. NO INVERT CHANNEL.
4. CASTING BY I-CAST (JBS 4190-L F/G).

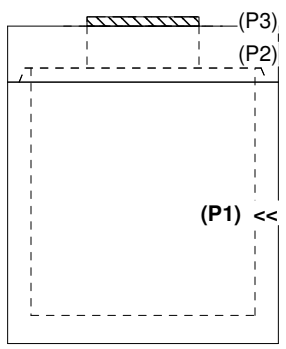
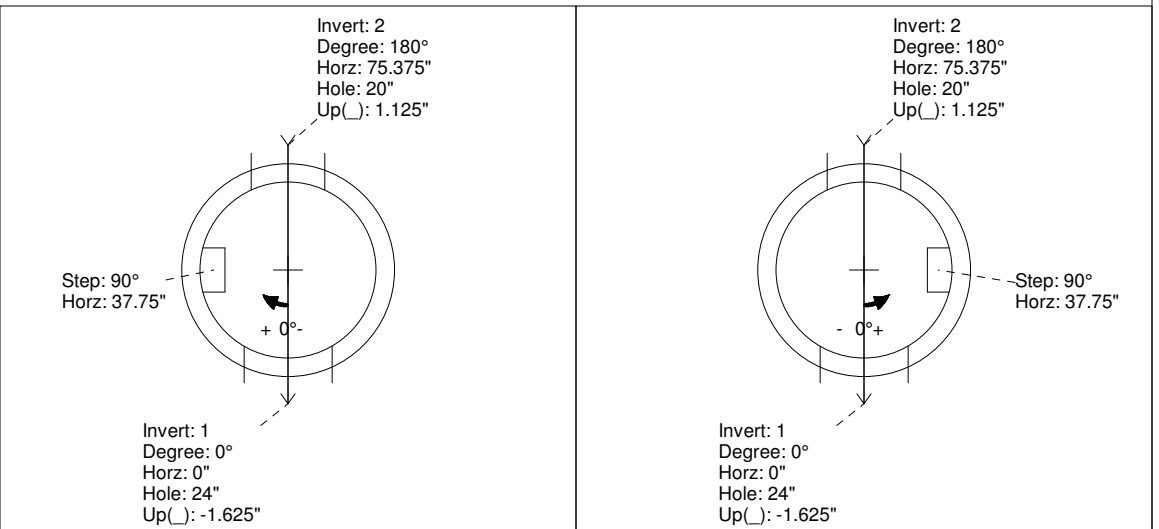
REINFORCING PER ASTM A615 (GRADE 60).  
 - TOP SLAB (As .62) #5 BARS AT 6" C.C.E.W..  
 - RISER/WALLS (As .18)  
 - FLOOR (As .37) #5 BARS AT 10" C.C.E.W.

Rim: 504.8' Rim to Invert: 5.34' Slack: 0.08" Sump: 0" Step Position: 90°

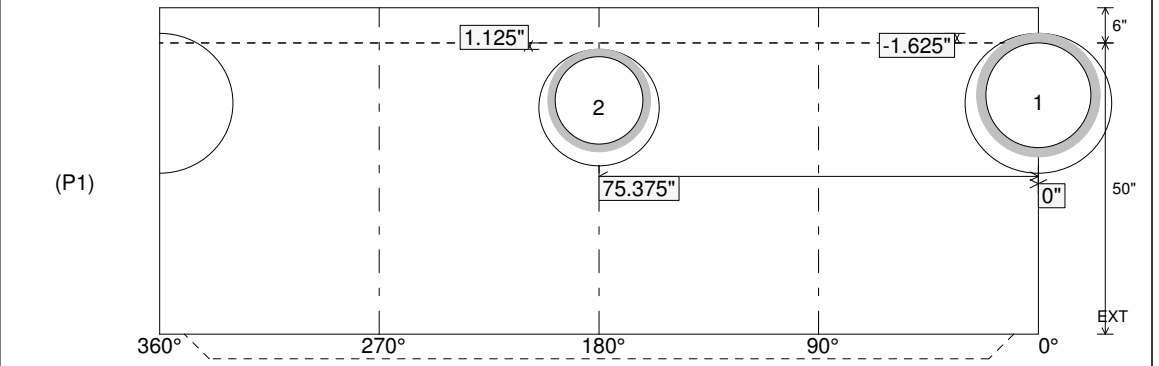
Position	Elev	Angle	Ext. (cw)	Pipe	Pipe OD	Connector	Hole	Horz Size	Up ( )	Offset
Invert 1	499.46'	0°	0"	18" HDPE	21.2"	Hole 24	24"	25.133"	-1.625"	0"
Invert 2	499.66'	180°	91.125"	15" HDPE	17.6"	Hole 20	20"	20.629"	1.125"	0"
Invert 3										
Invert 4										
Invert 5										
Invert 6										
Invert 7										
Invert 8										

RIGHT-SIDE UP VIEW (int. dimensions)

UPSIDE-DOWN VIEW (int. dimensions)



INSIDE WALL DIMENSIONS



Coating (Int):  
 Coating (Ext):

Seam Up: Tongue  
 Seam Dn: n/a

Wall Thickness: 5"  
 Floor Height: 6"

Height (Int): 50"  
 Height (Ext): 56"

Weight (Net): 4491 lb  
 Volume (Net): 1.15cu.yd

Job Name: 25-3462B - Corvette Museum Material  
 Job Location: Bowling Green, KY  
 Contractor: National Corvette Museum c/o Scotty's Contracting

Plant: 100

2/6/2026 9:29:41 AM

Tech: J. Horsley

PC: C. Goff



**Structure ID: DI-10 (2)**

**P2 MH048LD12-24SQ**

**MH FLAT TOP w/24"x24" Hole F/G**

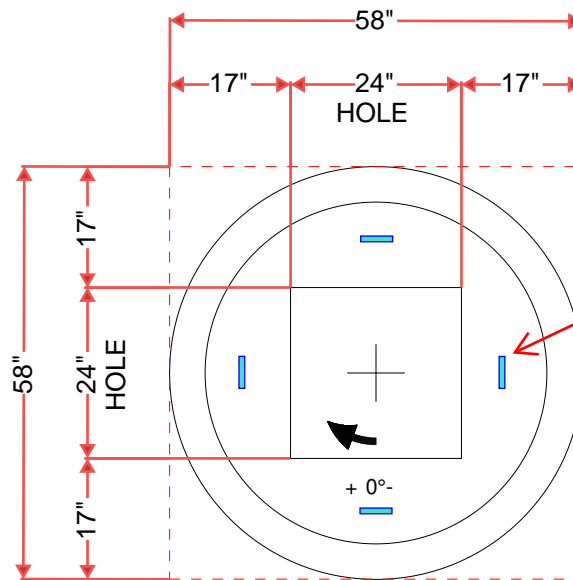
- P3) 24" x 24" - CASTING HEIGHT - 2"
- P2) 48" - MH FLAT TOP w/24"x24" Hole F/G - 12"
- P1) 48" - MH BASE Custom Ht T/n - 50"
- 1) CASTING - JBS 4190-L F/G
- 1) 48" - Conseal CS-102 1.00"
- 1) Hole - 24"
- 1) Hole - 20"
- 4) MH Step ML-10-TDS-NCR - 10"

0 lb  
 1500 lb  
 4491 lb  
 335 lb  
 0 lb  
 0 lb  
 0 lb  
 0 lb  
 -----  
 Structure Total: 6326 lb

Structure Notes:

1. PER ASTM C478 SPECIFICATIONS.
2. CONCRETE = 4,000 PSI AT 28 DAYS.
3. NO INVERT CHANNEL.
4. CASTING BY I-CAST (JBS 4190-L F/G).

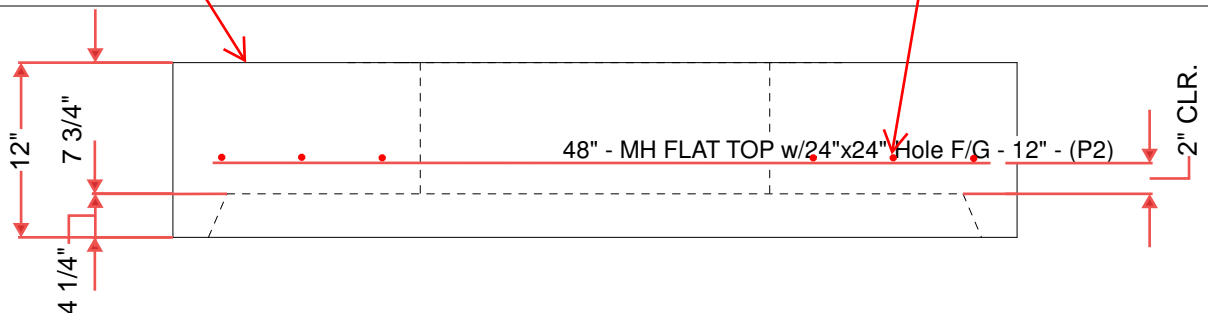
REINFORCING PER ASTM A615 (GRADE 60).  
 - TOP SLAB (As .62) #5 BARS AT 6" C.C.E.W..  
 - RISER/WALLS (As .18)  
 - FLOOR (As .37) #5 BARS AT 10" C.C.E.W.



4 EA. CONAC WRA016 WIRE LOOP LIFTERS

FLOAT FINISH ON TOP SURFACE

#5 BARS AT 6" C.C.E.W. 2" CLR. TYP.



Coating (Int):  
 Coating (Ext):

Seam Up: Flat  
 Seam Dn: Groove

Wall Thickness: 5"

Height (Ext): 12"

Weight (Net): 1500 lb  
 Volume (Net): 0.37cu.yd

Job Name: 25-3462B - Corvette Museum Material  
 Job Location: Bowling Green, KY  
 Contractor: National Corvette Museum c/o Scotty's Contracting

Plant: 100  
 2/6/2026 9:31:20 AM

Tech: J. Horsley  
 PC: C. Goff



**Structure ID: DI-11 (3)**

**P1 MH048BAVF**

**MH BASE Custom Ht T/n**

- P3) 24" x 24" - CASTING HEIGHT - 2"
- P2) 48" - MH FLAT TOP w/24"x24" Hole F/G - 12"
- P1) 48" - MH BASE Custom Ht T/n - 38"
- 1) CASTING - JBS 4190-L F/G
- 1) 48" - Conseal CS-102 1.00"
- 1) Hole - 20
- 3) MH Step ML-10-TDS-NCR - 10"

0 lb  
 1500 lb  
 3850 lb  
 335 lb  
 0 lb  
 0 lb  
 0 lb  
 -----  
 Structure Total: 5685 lb

**Structure Notes:**  
 1. PER ASTM C478 SPECIFICATIONS.  
 2. CONCRETE = 4,000 PSI AT 28 DAYS.  
 3. NO INVERT CHANNEL.  
 4. CASTING BY I-CAST (JBS 4190-L F/G).

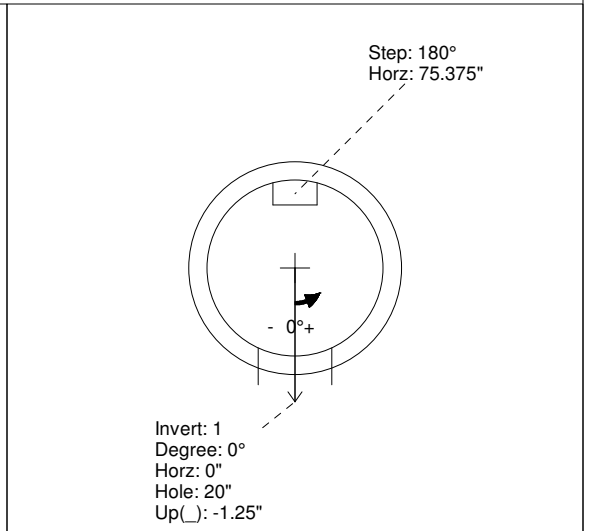
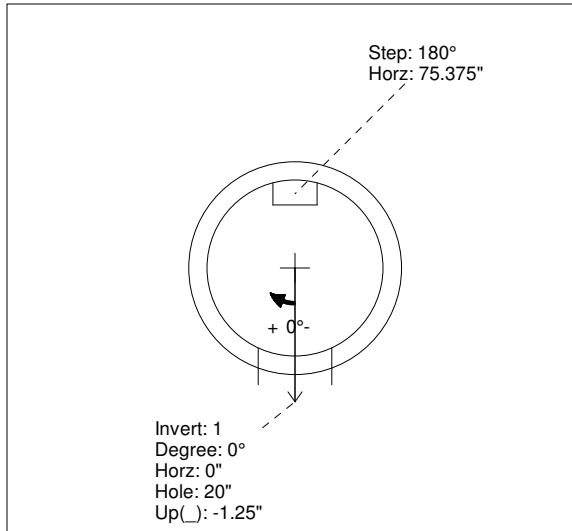
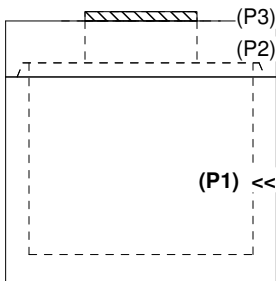
REINFORCING PER ASTM A615 (GRADE 60).  
 - TOP SLAB (As .62) #5 BARS AT 6" C.C.E.W..  
 - RISER/WALLS (As .18)  
 - FLOOR (As .37) #5 BARS AT 10" C.C.E.W.

Rim: 504.8' Rim to Invert: 4.39' Slack: 0.68" Sump: 0" Step Position: 180°

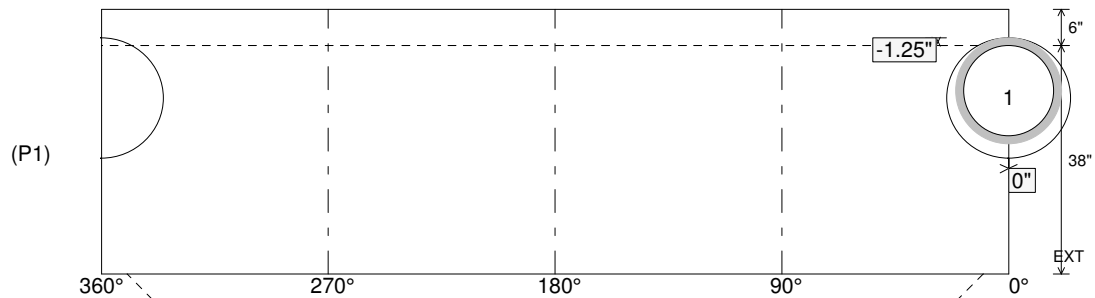
Position	Elev	Angle	Ext. (cw)	Pipe	Pipe OD	Connector	Hole	Horz Size	Up ( )	Offset
Invert 1	500.41'	0°	0"	15" HDPE	17.6"	Hole 20	20"	20.629"	-1.25"	0"
Invert 2										
Invert 3										
Invert 4										
Invert 5										
Invert 6										
Invert 7										
Invert 8										

RIGHT-SIDE UP VIEW (int. dimensions)

UPSIDE-DOWN VIEW (int. dimensions)



INSIDE WALL DIMENSIONS



Coating (Int):  
 Coating (Ext):

Seam Up: Tongue  
 Seam Dn: n/a

Wall Thickness: 5"  
 Floor Height: 6"

Height (Int): 38"  
 Height (Ext): 44"

Weight (Net): 3850 lb  
 Volume (Net): 0.98cu.yd

Job Name: 25-3462B - Corvette Museum Material  
 Job Location: Bowling Green, KY  
 Contractor: National Corvette Museum c/o Scotty's Contracting

Plant: 100

2/6/2026 9:30:21 AM

Tech: J. Horsley

PC: C. Goff



**Structure ID: DI-11 (3)**

**P2 MH048LD12-24SQ**

**MH FLAT TOP w/24"x24" Hole F/G**

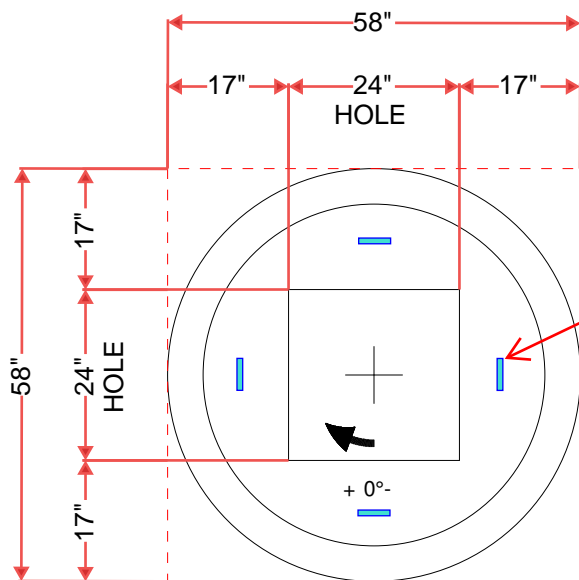
- P3) 24" x 24" - CASTING HEIGHT - 2"
- P2) 48" - MH FLAT TOP w/24"x24" Hole F/G - 12"
- P1) 48" - MH BASE Custom Ht T/n - 38"
- 1) CASTING - JBS 4190-L F/G
- 1) 48" - Conseal CS-102 1.00"
- 1) Hole - 20
- 3) MH Step ML-10-TDS-NCR - 10"

0 lb  
 1500 lb  
 3850 lb  
 335 lb  
 0 lb  
 0 lb  
 0 lb  
 -----  
 Structure Total: 5685 lb

Structure Notes:

1. PER ASTM C478 SPECIFICATIONS.
2. CONCRETE = 4,000 PSI AT 28 DAYS.
3. NO INVERT CHANNEL.
4. CASTING BY I-CAST (JBS 4190-L F/G).

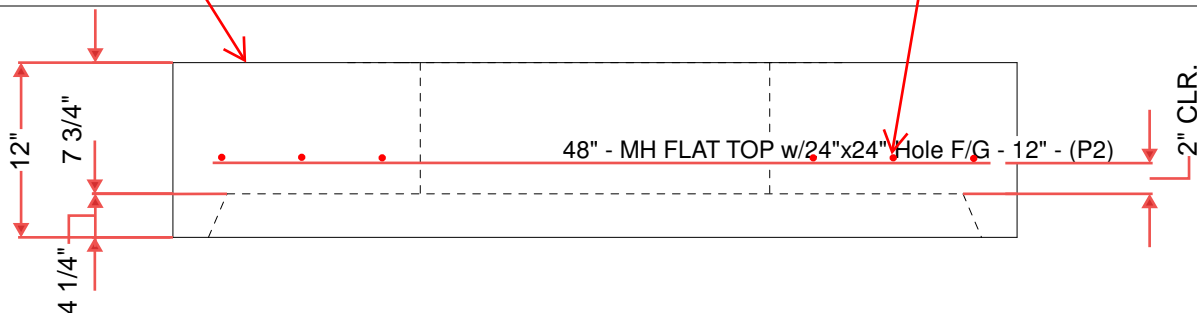
REINFORCING PER ASTM A615 (GRADE 60).  
 - TOP SLAB (As .62) #5 BARS AT 6" C.C.E.W..  
 - RISER/WALLS (As .18)  
 - FLOOR (As .37) #5 BARS AT 10" C.C.E.W.



4 EA. CONAC WRA016 WIRE LOOP LIFTERS

FLOAT FINISH ON TOP SURFACE

#5 BARS AT 6" C.C.E.W. 2" CLR. TYP.



Coating (Int):  
 Coating (Ext):

Seam Up: Flat  
 Seam Dn: Groove

Wall Thickness: 5"

Height (Ext): 12"

Weight (Net): 1500 lb  
 Volume (Net): 0.37cu.yd